



4A0-106^{Q&As}

Alcatel-Lucent Virtual Private Routed Networks

Pass Alcatel-Lucent 4A0-106 Exam with 100% Guarantee

Free Download Real Questions & Answers **PDF** and **VCE** file from:

<https://www.passapply.com/4a0-106.html>

100% Passing Guarantee
100% Money Back Assurance

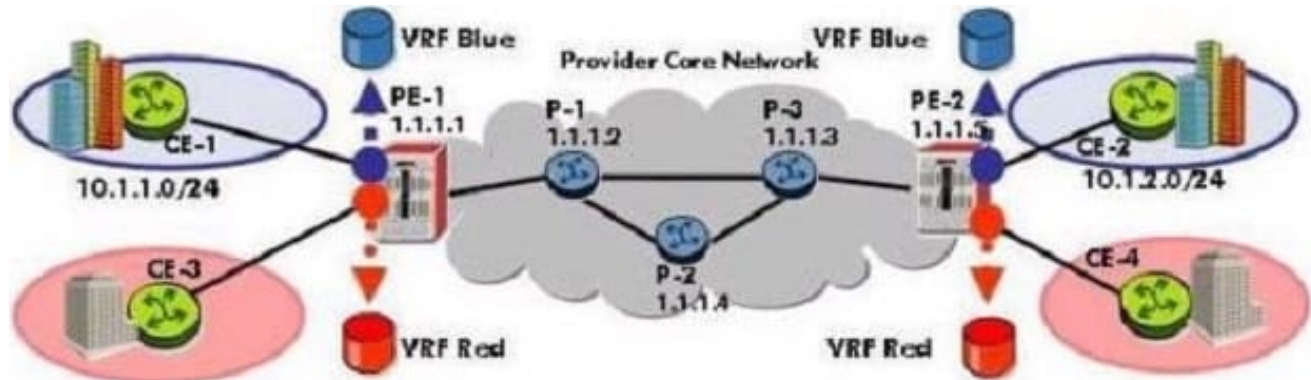
Following Questions and Answers are all new published by Alcatel-Lucent Official Exam Center

- ⚙️ **Instant Download** After Purchase
- ⚙️ **100% Money Back** Guarantee
- ⚙️ **365 Days** Free Update
- ⚙️ **800,000+** Satisfied Customers



**QUESTION 1**

Click the exhibit.



```
P-1# configure router ldp
P-1>config>router>ldp# interface-parameters
P-1>config>router>ldp>if-params# interface "P-1 to PE-1"
P-1>config>router>ldp>if-params>if# exit
P-1>config>router>ldp>if-params# interface "P-1 to P-2"
P-1>config>router>ldp>if-params>if# exit
P-1>config>router>ldp>if-params# interface "P-1 to P-3"
P-1>config>router>ldp>if-params>if# exit
```

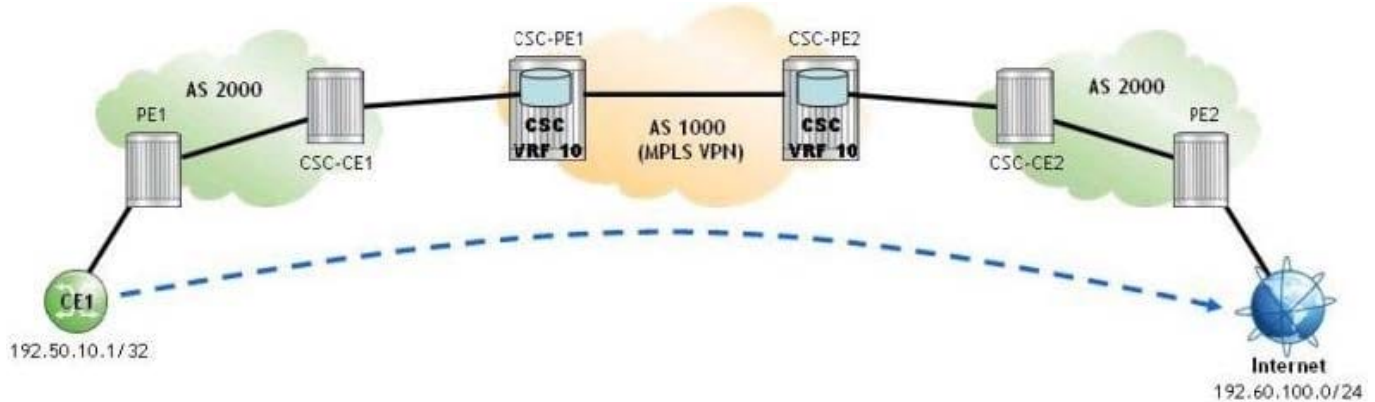
An Alcatel-Lucent 7750 SR is to be configured as a core router that supports VPRNs using LDP as the transport protocol. Which of the following best describes this configuration?

- A. This configuration is correct and complete.
- B. This configuration is correct, but the interfaces must also be configured in the "configure router mpls" context.
- C. There is no configuration required for LDP in the core network.
- D. This configuration is correct but Targeted-LDP is also required.

Correct Answer: A

QUESTION 2

Click the exhibit.



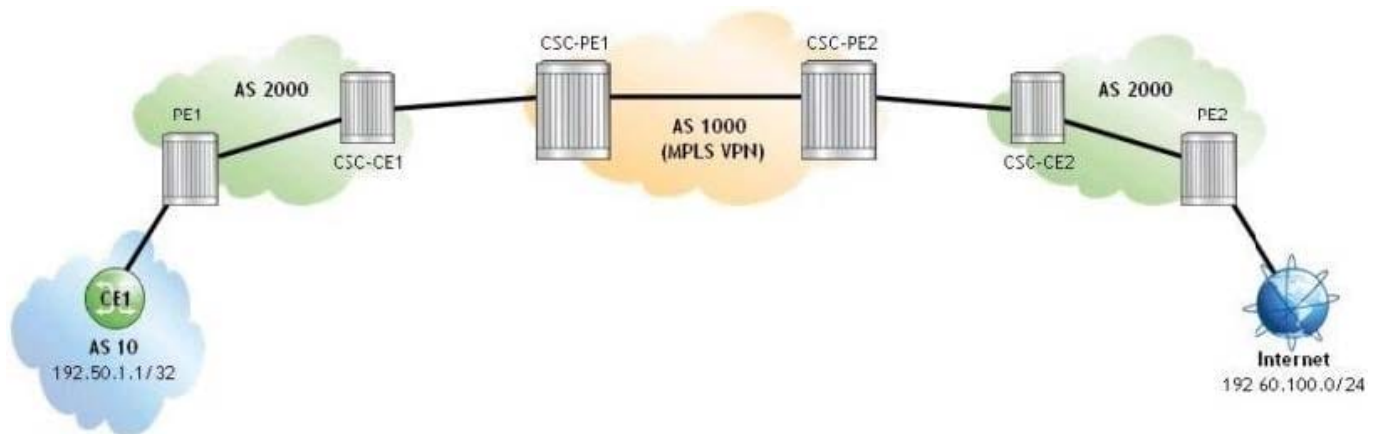
A Carrier Supporting Carrier (CSC) VPRN is configured for a customer carrier who is an Internet Service Provider (ISP). If CE1 sends an IP packet to 192.60.100.1, which of the following is FALSE?

- A. PE1 pushes an LDP transport label.
- B. CSC-PE1 pops the BGP label and pushes two labels: a VPN label and an MPLS transport label.
- C. CSC-PE2 pops the MPLS transport label and pushes a BGP label.
- D. CSC-CE2 pops the BGP label and pushes an LDP transport label.

Correct Answer: C

QUESTION 3

Click the exhibit.



A Carrier Supporting Carrier (CSC) VPRN is configured on an Alcatel-Lucent 7750 SR for a customer carrier who is an Internet Service Provider (ISP). Which of the following configuration steps is NOT required?

- A. Configuring iBGP sessions between PEs residing in different customer carrier sites,
- B. Configuring a policy on each CSC-CE to advertise local PE addresses to the network provider.
- C. Configuring a CSC VPRN on each CSC-PE with a SAP interface towards the attached CSC-CE.



D. Configuring an IES service on PE1.

Correct Answer: C

QUESTION 4

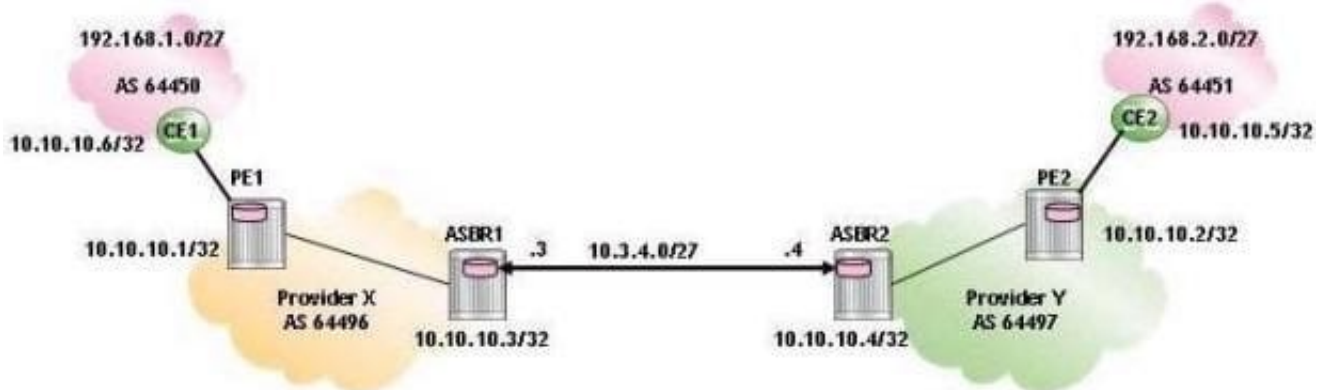
Which of the following about the Route Target is TRUE?

- A. The Route Target is added to an IPv4 route to create the VPN-IPv4 route.
- B. The Route Target is an extended community string that identifies VPN membership.
- C. A route can have only one Route Target.
- D. The Route Target is a 64-bit value added to customer prefixes to make them unique.

Correct Answer: B

QUESTION 5

Click the exhibit.



Which of the following about the inter-AS model A VPRN configuration on ASBR1 is TRUE?

- A. The route-distinguisher value must be 64496:10 for successful VPRN operation.
- B. An export policy is not required for successful VPRN operation.
- C. The "family vpn-ipv4" command is required under the BGP configuration for successful VPRN operation.
- D. The neighbor address should be 10.10.10.4 under the BGP configuration for successful VPRN operation.
- E. The VPRN configuration on ASBR1 is correct.

Correct Answer: E

[4A0-106 PDF Dumps](#)

[4A0-106 Practice Test](#)

[4A0-106 Braindumps](#)