



4A0-105^{Q&As}

Alcatel-Lucent Virtual Private LAN Services

Pass Alcatel-Lucent 4A0-105 Exam with 100% Guarantee

Free Download Real Questions & Answers **PDF** and **VCE** file from:

<https://www.passapply.com/4a0-105.html>

100% Passing Guarantee
100% Money Back Assurance

Following Questions and Answers are all new published by Alcatel-Lucent Official Exam Center

- ⚙️ **Instant Download** After Purchase
- ⚙️ **100% Money Back** Guarantee
- ⚙️ **365 Days** Free Update
- ⚙️ **800,000+** Satisfied Customers





QUESTION 1

What of the following is a key benefit of Active/Standby pseudowires?

- A. The MDU does not need to support MPLS.
- B. Can be used in ring networks of 4 or more nodes
- C. Does not require the use of a layer 2 loop prevention protocol such as RSTP
- D. The MDU does not have to be aware of the active/standby configuration

Correct Answer: C

QUESTION 2

Click on the exhibit below.

```
vpls 1 customer 1
  sap 1/1/1:0

vpls 2 customer 2
  sap 1/1/1:100

vpls 3 customer 3
  sap 1/1/1:300
```

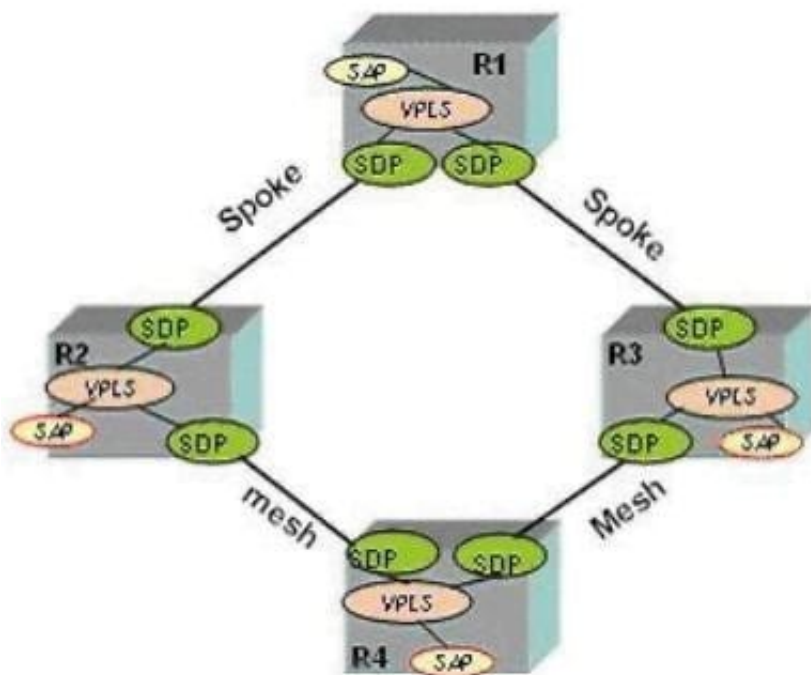
The following VPLS services and SAPs have been configured. Which of the following statements is true?

- A. All untagged frames will be dropped.
- B. The source MAC address of a frame with a top tag of 200 and bottom tag of 300 will be populated in VPLS 3.
- C. All frames with more than one tag will be dropped.
- D. The source MAC address of a frame with a single tag of 500 will be populated in VPLS 1.
- E. The source MAC address of a frame with a top tag of 100 will be populated in VPLS 2.

Correct Answer: E

QUESTION 3

Click on the exhibit below.



If the SDP between R2 and R1 goes down, what devices will be reachable from R2 through the VPLS?

- A. Only R4 will be reachable through the VPLS.
- B. All devices will be reachable through the VPLS.
- C. R4 and R3 will remain reachable.
- D. No devices will be reachable.

Correct Answer: A

QUESTION 4

MC-LAG provides link and node protection from an MDU to 3 or more PE devices.

- A. TRUE
- B. FALSE

Correct Answer: B

QUESTION 5

What is the maximum number of VLANs supported on a traditional Layer 2 switch?

- A. 4094



B. 8190

C. 32768

D. 131071

Correct Answer: A

[4A0-105 PDF Dumps](#)

[4A0-105 Exam Questions](#)

[4A0-105 Braindumps](#)