



4A0-105^{Q&As}

Alcatel-Lucent Virtual Private LAN Services

Pass Alcatel-Lucent 4A0-105 Exam with 100% Guarantee

Free Download Real Questions & Answers **PDF** and **VCE** file from:

<https://www.passapply.com/4a0-105.html>

100% Passing Guarantee
100% Money Back Assurance

Following Questions and Answers are all new published by Alcatel-Lucent Official Exam Center

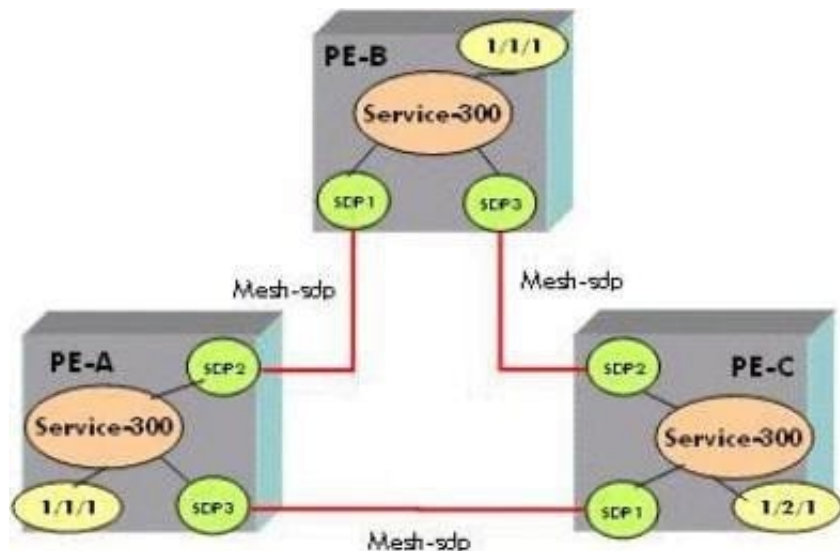
- ⚙️ **Instant Download** After Purchase
- ⚙️ **100% Money Back** Guarantee
- ⚙️ **365 Days** Free Update
- ⚙️ **800,000+** Satisfied Customers





QUESTION 1

Click on the exhibit below.



The service MTU on PE-A is 1514 bytes and the service MTU on PE-C is 1518 bytes. What is the status of the mesh-sdp between PE-A and PE-C?

- A. The mesh-sdp will be up.
- B. The mesh-sdp will be down.
- C. The mesh-sdp will only be up on PE-A.
- D. The mesh-sdp will only be up on PE-C.

Correct Answer: B

QUESTION 2

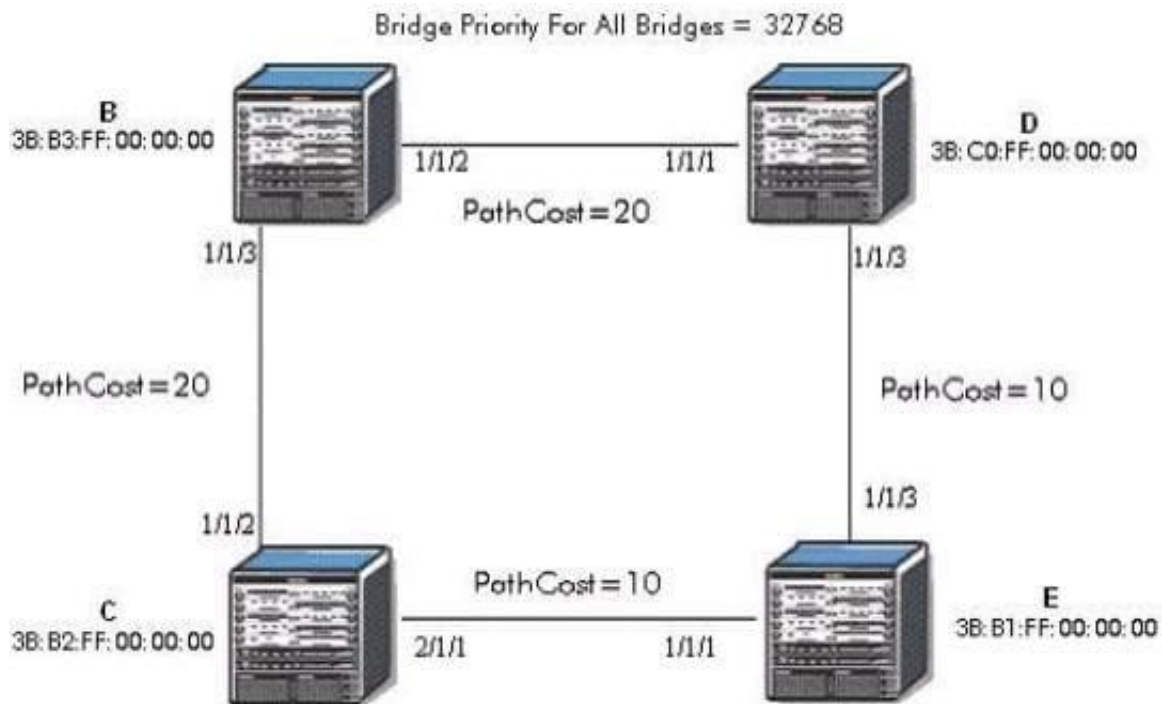
What function in IEEE 802.1 ah helps to limit the amount of MAC addresses learned in the core?

- A. I-VPLS is configured in the core of the network with an I-MAC address. This I-MAC address is the only MAC learned in the core
- B. The B-VPLS and I-VPLS are configured in the edge. The B-VPLS is configured with a Backbone MAC and is the only MAC learned in the core
- C. Each SDP is configured with a Backbone MAC to hide customer MAC addresses in the core
- D. Each SAP is associated with a common I-MAC to hide customer MAC addresses in the core

Correct Answer: B

**QUESTION 3**

Click on the exhibit below.



Which port will become the alternate port?

- A. Bridge B 1/1/3
- B. Bridge B 1/1/2
- C. Bridge C 1/1/2
- D. Bridge C 2/1/1
- E. Bridge D 1/1/1
- F. Bridge D 1/1/3
- G. Bridge E 1/1/1
- H. Bridge E 1/1/3

Correct Answer: B

QUESTION 4

What is the default remote-age timer of a B-VPLS?

- A. The same timer is used in all VPLS types.
- B. Higher than the default timer of an I-VPLS.



C. Lower than the default timer of an I-VPLS.

D. The same timer as an I-VPLS.

Correct Answer: C

QUESTION 5

The service mtu of a VPLS is set to 9100. What is the recommended MTU value that can be set for the access port assuming dot1q encapsulation?

A. 9100

B. 9104

C. 9108

D. 9122

E. 9126

Correct Answer: B

[Latest 4A0-105 Dumps](#)

[4A0-105 VCE Dumps](#)

[4A0-105 Study Guide](#)