



4A0-105^{Q&As}

Alcatel-Lucent Virtual Private LAN Services

Pass Alcatel-Lucent 4A0-105 Exam with 100% Guarantee

Free Download Real Questions & Answers **PDF** and **VCE** file from:

<https://www.passapply.com/4a0-105.html>

100% Passing Guarantee
100% Money Back Assurance

Following Questions and Answers are all new published by Alcatel-Lucent Official Exam Center

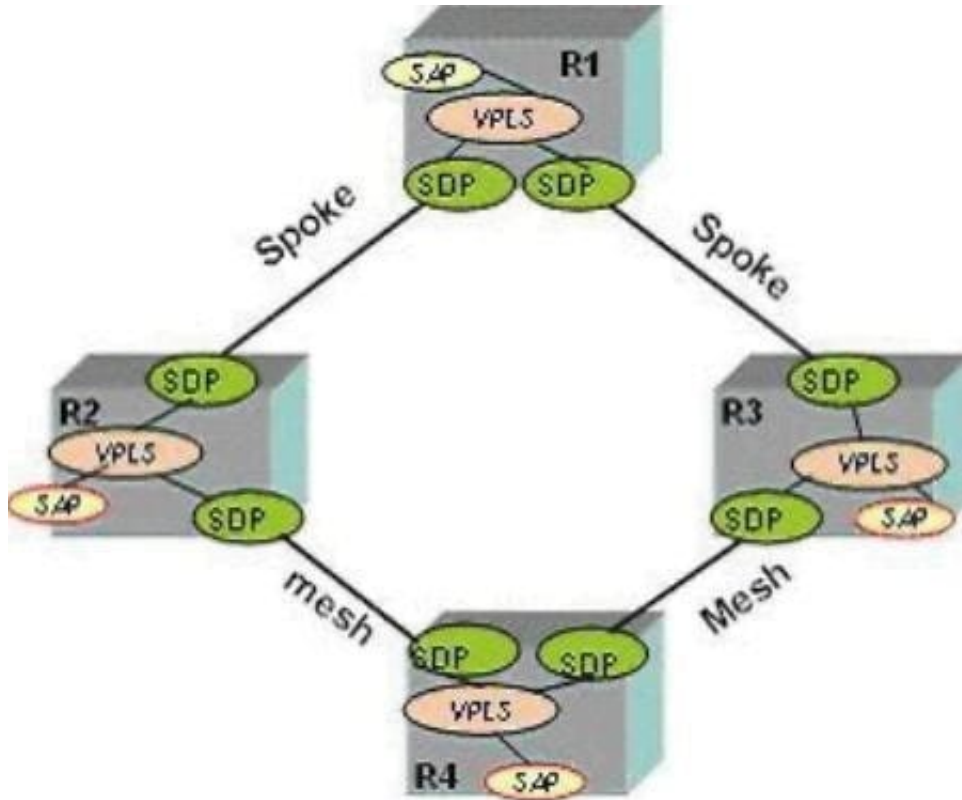
-  **Instant Download** After Purchase
-  **100% Money Back** Guarantee
-  **365 Days** Free Update
-  **800,000+** Satisfied Customers





QUESTION 1

Click on the exhibit below.



The VPLS service MTU on R2 is 1514 bytes. What must the service MTU be on all other routers participating in the VPLS?

- A. The service MTU must be equal to or smaller than 1514 bytes.
- B. The service MTU must be 1514 bytes.
- C. The service MTU must be equal to or greater than 1514 bytes.
- D. The service MTU can be any value.

Correct Answer: B

QUESTION 2

In IEEE 802.1ag, which two key functions are configured on bridge ports (SAPs and SDPs) to support CFM messages? (Choose 2)

- A. MEP
- B. MAP
- C. MIP



D. MUP

Correct Answer: AC

QUESTION 3

When ports configured with IEEE 802.3ah EFM are operationally down, what must the device do before declaring the ports are up?

- A. The device will try to force the other side up using the evaluating flag in the PDU.
- B. The device will wait for the transmit-interval of 5 before trying to rediscover the neighbor.
- C. The device will detect the port change and will wait for normal operation mode.
- D. The device will detect the port change and revert to discovery mode.

Correct Answer: D

QUESTION 4

Which of the following statements is true?

- A. Filter Policies can only be applied on egress.
- B. An IP filter can be applied on ingress at the same time a MAC filter is applied on the egress of the SAP.
- C. Filter Policies can be based on IP, MAC, and VPI/VCI addresses.
- D. Any number of ingress and egress filter policies can be associated with a SAP.
- E. An IP filter and a MAC filter can be applied on the ingress SAP at the same time.
- F. None of the above.

Correct Answer: B

QUESTION 5

After the "disable-learning" command has been executed at the VPLS level, a new client device originates a frame. What is the result?

- A. If the MAC address of this new client device does not reach the upper limit of the configured total number of MAC addresses allowed in the VPLS forwarding database, then the new MAC address will be stored.
- B. The new source MAC addresses will not be entered in the VPLS service forwarding database.
- C. New local source MAC addresses will not be entered in the VPLS service forwarding database, but new remote MAC addresses would continue to be entered.
- D. New remote source MAC addresses will not be entered in the VPLS services forwarding database, but new local



MAC addresses would continue to be entered.

Correct Answer: B

[Latest 4A0-105 Dumps](#)

[4A0-105 VCE Dumps](#)

[4A0-105 Study Guide](#)