



4A0-104^{Q&As}

Alcatel-Lucent Services Architecture

Pass Alcatel-Lucent 4A0-104 Exam with 100% Guarantee

Free Download Real Questions & Answers **PDF** and **VCE** file from:

<https://www.passapply.com/4a0-104.html>

100% Passing Guarantee
100% Money Back Assurance

Following Questions and Answers are all new published by Alcatel-Lucent Official Exam Center

- ⚙️ **Instant Download** After Purchase
- ⚙️ **100% Money Back** Guarantee
- ⚙️ **365 Days** Free Update
- ⚙️ **800,000+** Satisfied Customers





QUESTION 1

When a tagged packet is received on a SAP configured with dot1q encapsulation, the VLAN tag must match the value configured on the SAP in order to be forwarded.

- A. TRUE
- B. FALSE

Correct Answer: A

QUESTION 2

Click the exhibit.

```
#-----  
echo "BGP Configuration"  
#-----  
    bgp  
        group "multi-bgp"  
            ? ? ?  
        neighbor 10.10.10.2  
            local-address 10.10.10.1  
            peer-as 64496  
        exit  
    exit  
exit
```

This PE is connected to an IPv4 core and is being configured to support 6VPE for a VPRN. Which of the following completes this section of the configuration?

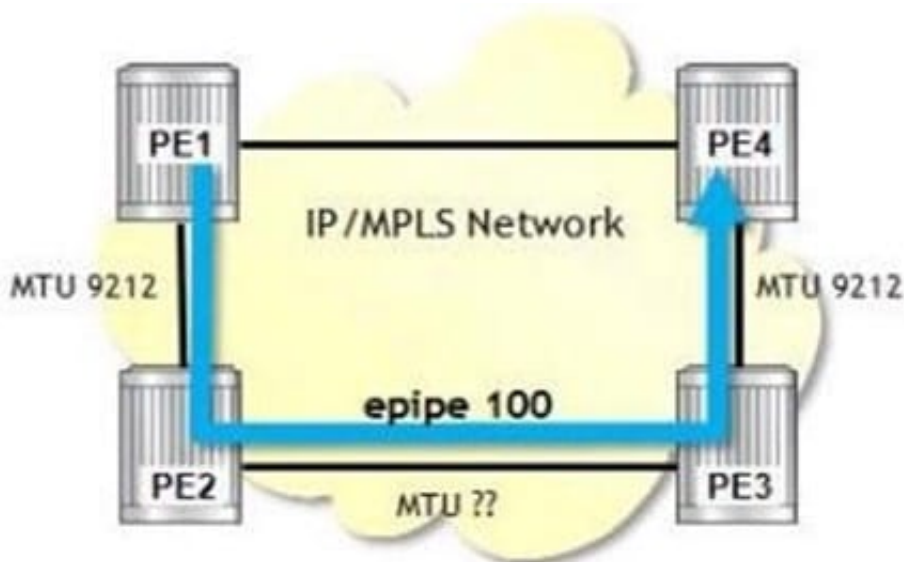
- A. Family ipv4
- B. Family ipv6
- C. Family ipv4 ipv6
- D. Family vpn-ipv4
- E. Family vpn-ipv4 vpn-ipv6



Correct Answer: E

QUESTION 3

Click the exhibit.



```
PE1# oam sdp-mtu 4 size-inc 1550 1570 step 1
Size      Sent      Response
-----
1550      .          Success
1551      .          Success
1552      .          Success
1553      .          Success
1554      .          Success
1555      .          Success
1556      .          Success
1557      ...       Request Timeout

Maximum Response Size: 1556
```

E-pipe 100 is using an SDP with an LSP that uses the path shown (PE1-PE2-PE3-PE4). Based on the OAM command output, which of the following is FALSE?

- A. The E-pipe can support a maximum MTU size of 1578.
- B. The ports of the link PE2-PE3 have an MTU of 1578.
- C. An svc-ping of the E-pipe will succeed.
- D. If the step size was 2, the maximum response size would be the same.



Correct Answer: A

QUESTION 4

A transport tunnel can either use an MPLS or GRE encapsulation.

A. TRUE B. FALSE

Correct Answer: A

QUESTION 5

FRF.5 is a standard that describes which of the following requirements?

- A. ATM to Frame Relay translation.
- B. Frame Relay to Ethernet translation.
- C. ATM tunneling over a Frame Relay core network.
- D. Frame Relay tunneling over an ATM core network.
- E. Frame Relay tunneling over an MPLS/IP core network

Correct Answer: D

[4A0-104 PDF Dumps](#)

[4A0-104 VCE Dumps](#)

[4A0-104 Study Guide](#)