



4A0-102^{Q&As}

Alcatel-Lucent Border Gateway Protocol

Pass Alcatel-Lucent 4A0-102 Exam with 100% Guarantee

Free Download Real Questions & Answers **PDF** and **VCE** file from:

<https://www.passapply.com/4a0-102.html>

100% Passing Guarantee
100% Money Back Assurance

Following Questions and Answers are all new published by Alcatel-Lucent Official Exam Center

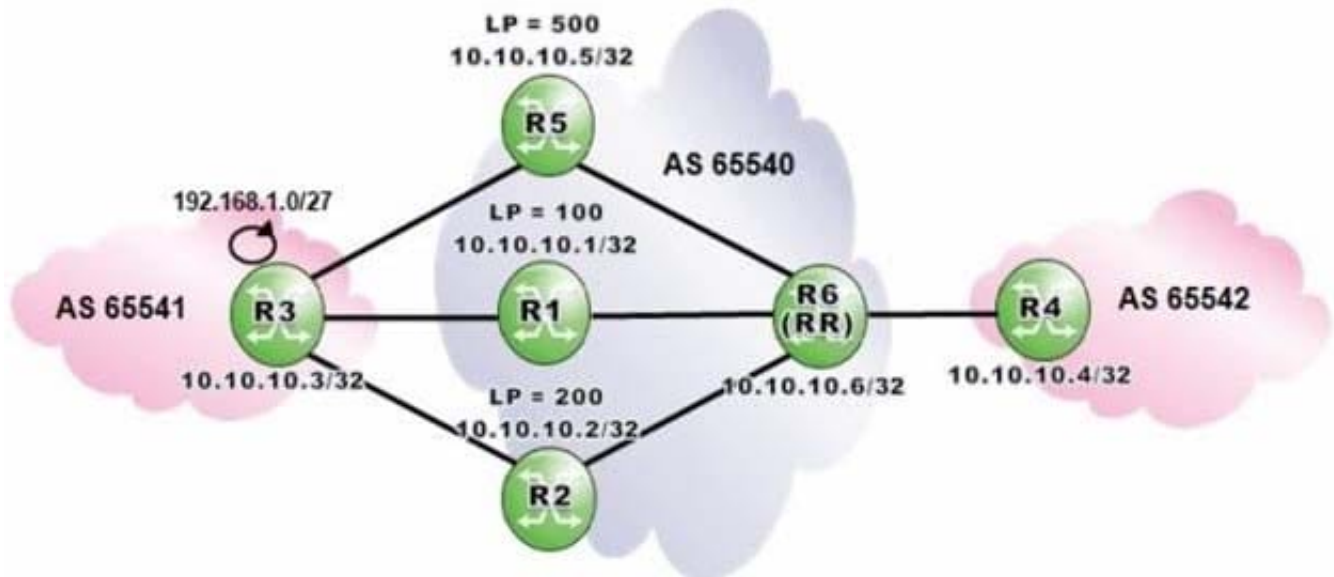
-  **Instant Download** After Purchase
-  **100% Money Back** Guarantee
-  **365 Days** Free Update
-  **800,000+** Satisfied Customers





QUESTION 1

Click the exhibit.



Router R6 is a route reflector for clients R1, R2 and R5 with local preferences 100, 200 and 500 respectively. Router R3 advertises prefix 192.168.1.0/27 to routers R1, R2 and R5 which are configured with advertise-external. Routers R4 and R6 are both configured with "add-paths ipv4 send 2 receive". Which routes to 192.168.0.1/27 is router R4 expected to have in its BGP routing table?

- A. The routes from routers R1, R2 and R5.
- B. The routes from routers R1 and R2.
- C. The routes from routers R2 and R5.
- D. Two routes are chosen at random and advertised to router R4.

Correct Answer: C

QUESTION 2

Which of the following about a single-homed AS is FALSE?

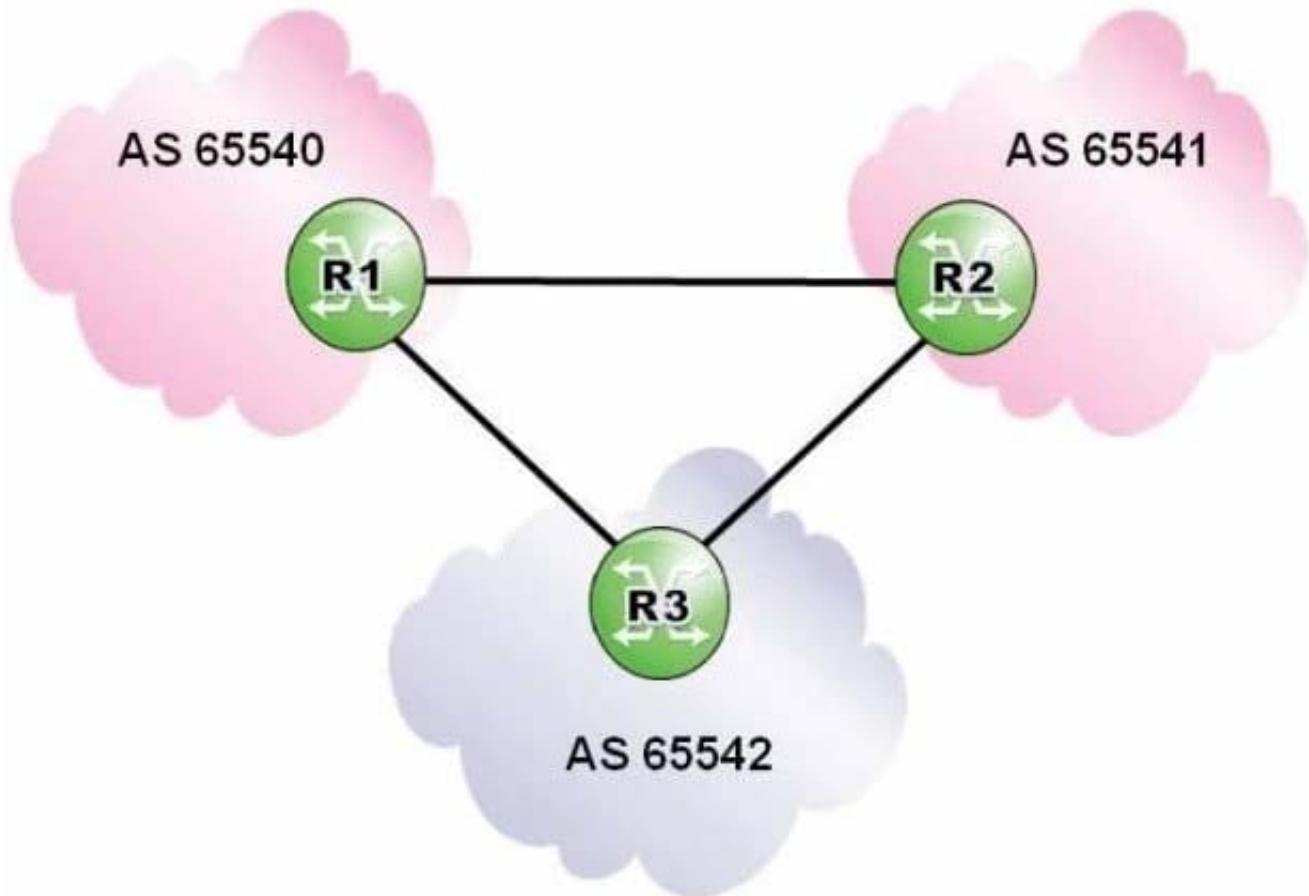
- A. A single-homed AS is also known as a stub AS.
- B. A single-homed AS is also known as a leaf AS.
- C. A single-homed AS uses either the ISP AS number or a private AS number.
- D. A single-homed AS can be either transit or non-transit

Correct Answer: D



QUESTION 3

Click the exhibit.



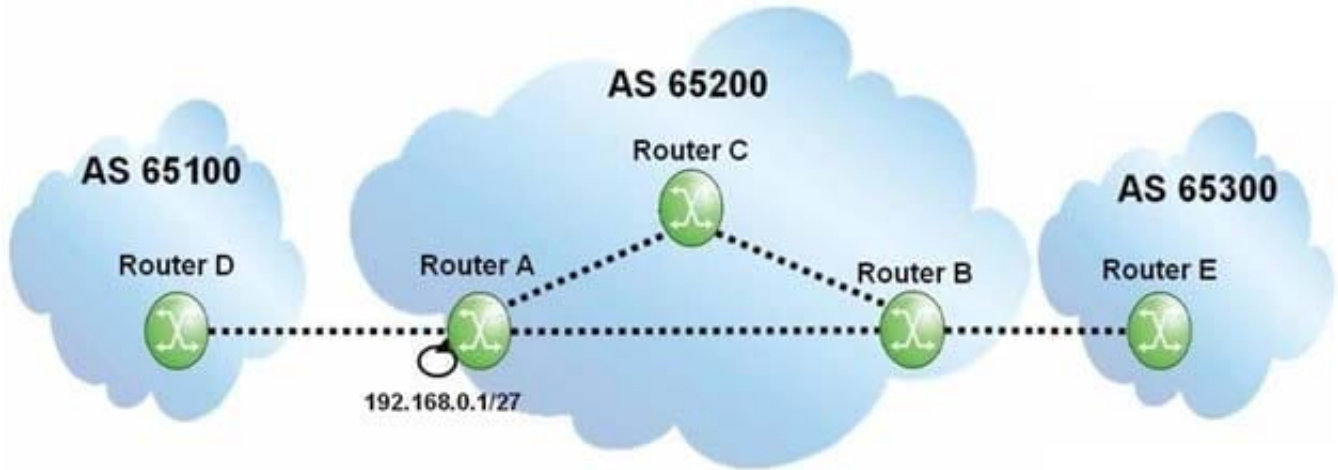
Router R3 is configured with an import policy to reject updates with an AS Path matching the regular expression ".+65540". Which of the following regarding updates originating in AS 65540 is TRUE?

- A. Router R3 rejects all updates originating in AS 65540.
- B. Router R3 accepts updates received from router R1 and rejects updates transited through router R2.
- C. Router R3 accepts updates transited through router R2 and rejects updates received from router R1.
- D. Router R3 accepts updates from both routers R1 and R2.

Correct Answer: B

QUESTION 4

Click the exhibit.



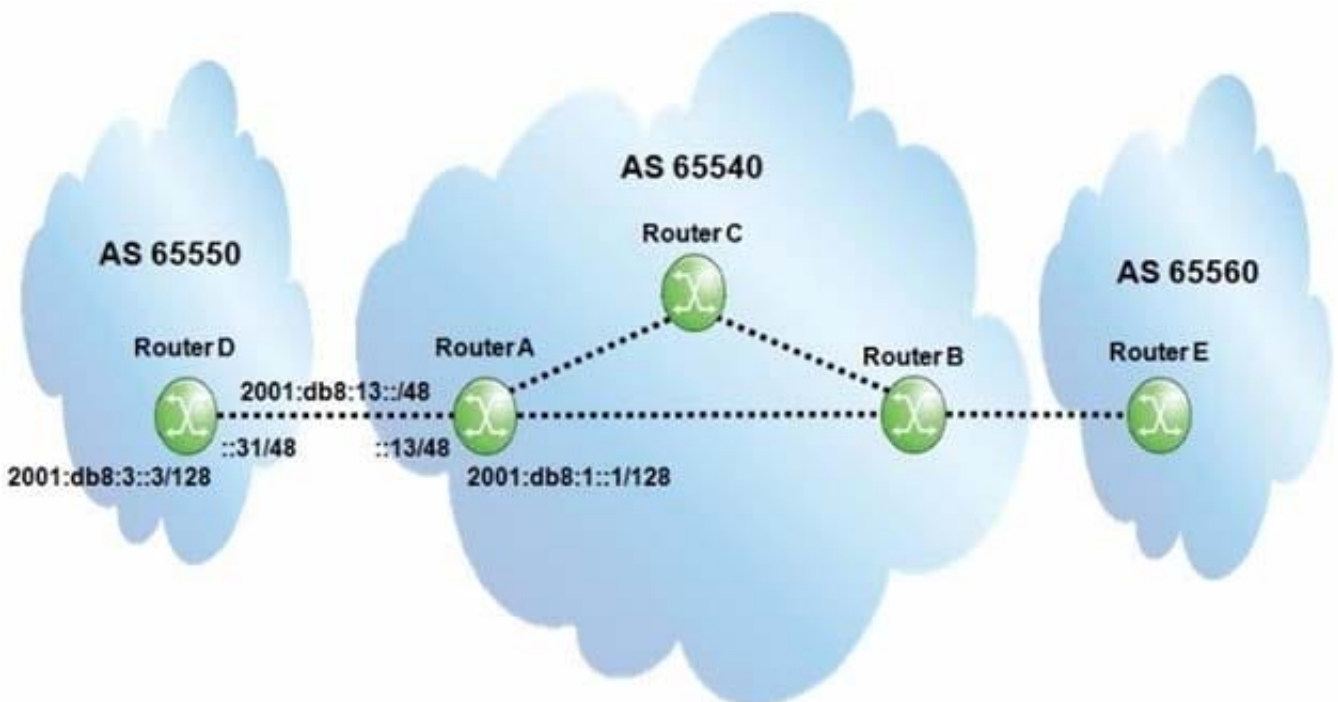
If router A originates an update for prefix 192.168.0.1/27, what will the update contain when it reaches router B?

- A. AS Path of 65200, local-preference of 100.
- B. AS Path of 65200, local-preference of None.
- C. Null AS Path, local-preference of 100.
- D. Null AS Path, local-preference of None.

Correct Answer: C

QUESTION 5

Click the exhibit.





Assume all router-IDs are properly configured. Which of the following configurations is required on the Alcatel-Lucent 7750 SR router A to establish an IPv6 BGP session to router D?

- A.

```
group "IPv6_eBGP"  
  family ipv6  
  type external  
  peer-as 65550  
  neighbor 2001:DB8:3::3  
  exit  
exit
```
- B.

```
group "IPv6_eBGP"  
  type external  
  peer-as 65550  
  neighbor 2001:DB8:3::3  
  exit  
exit
```
- C.

```
group "IPv6_eBGP"  
  family ipv6  
  peer-as 65550  
  neighbor 2001:DB8:13::31  
  exit  
exit
```
- D.

```
group "IPv6_eBGP"  
  type external  
  peer-as 65550  
  neighbor 2001:DB8:13::31  
  exit  
exit
```

A. Option A

B. Option B

C. Option C

D. Option D

Correct Answer: C



VCE & PDF

PassApply.com

<https://www.passapply.com/4a0-102.html>

2024 Latest passapply 4A0-102 PDF and VCE dumps Download

[Latest 4A0-102 Dumps](#)

[4A0-102 VCE Dumps](#)

[4A0-102 Study Guide](#)