



# 4A0-102<sup>Q&As</sup>

Alcatel-Lucent Border Gateway Protocol

## Pass Alcatel-Lucent 4A0-102 Exam with 100% Guarantee

Free Download Real Questions & Answers **PDF** and **VCE** file from:

<https://www.passapply.com/4a0-102.html>

100% Passing Guarantee  
100% Money Back Assurance

Following Questions and Answers are all new published by Alcatel-Lucent Official Exam Center

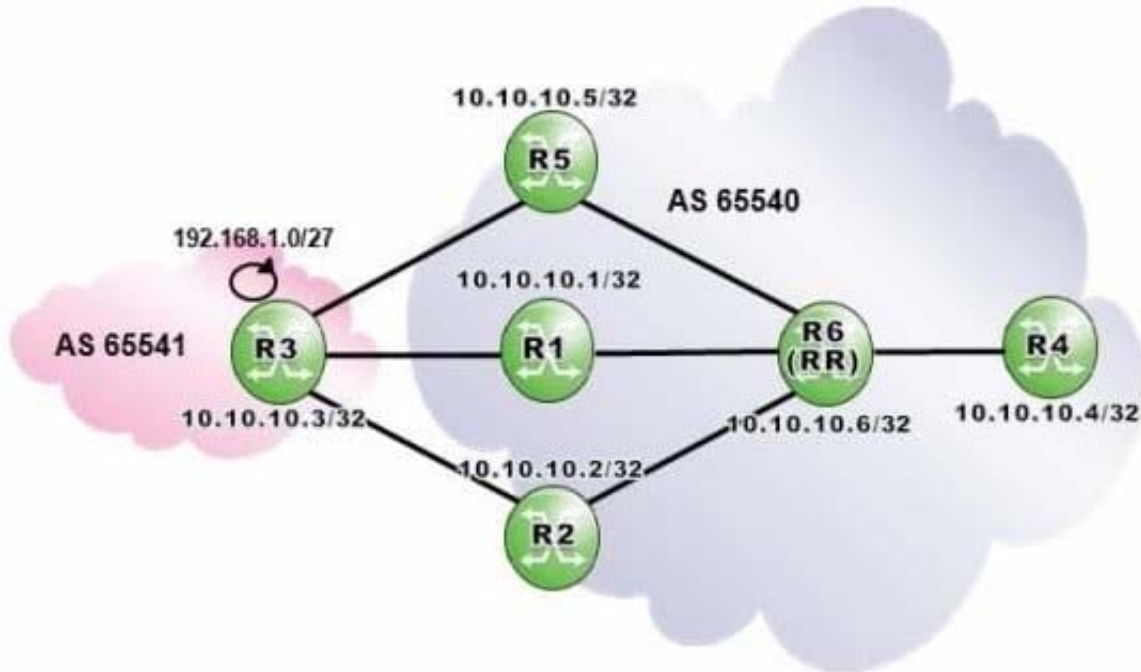
-  **Instant Download** After Purchase
-  **100% Money Back** Guarantee
-  **365 Days** Free Update
-  **800,000+** Satisfied Customers





### QUESTION 1

Click the exhibit.



Router R6 is a route reflector with clients R1, R2, R4 and R5. R4 receives three routes from router R6 and is configured with ECMP 3. Given the following BGP configuration on router R4, how many primary and backup paths will be present in router R4's BGP routing table?

```
R4>config>router>bgp# info
```

```
-----  
multipath 3  
add-paths  
  ipv4 send 3 receive  
exit  
backup-path ipv4  
group "IBGP"  
  peer-as 65540  
  neighbor 10.10.10.6  
exit  
exit
```

- A. Two primary paths and one backup path.
- B. One primary path and two backup paths.



- C. Three primary path and one backup path,
- D. Three primary paths.

Correct Answer: D

---

### QUESTION 2

Which of the following statements regarding BGP FRR is FALSE?

- A. The router must receive several BGP routes to compute a backup path.
- B. BGP FRR can be triggered by BFD.
- C. The backup path can use the same next hop as the primary path.
- D. BGP peer-tracking can be used to improve BGP FRR failure detection times.

Correct Answer: C

---

### QUESTION 3

A router in AS 65100 receives three routes for 138.120.0.0/16. The first route has an AS Path of 65200 65400 65300 and a local preference of 150. The second route has an AS Path of 65200 65300 and a local preference of 100. The third route has an AS Path of 65600 65300 and a local preference of 100. Which route will appear in the RIB-out?

- A. Only the first route will appear in the RIB-Out.
- B. Only the second route will appear in the RIB-Out.
- C. Only the third route will appear in the RIB-Out.
- D. All routes will appear in the RIB-Out.

Correct Answer: A

---

### QUESTION 4

Which of the following regarding BGP confederations is FALSE?

- A. A confederation is a collection of Autonomous Systems advertised as a single AS number to BGP speakers outside the confederation.
- B. Each member AS must either maintain a full mesh of iBGP sessions, or use route reflection.
- C. Confederations can be used to subdivide ASs that have a large number of BGP speakers into smaller domains.
- D. A full mesh of intra-confederation eBGP sessions is required between the member ASs.

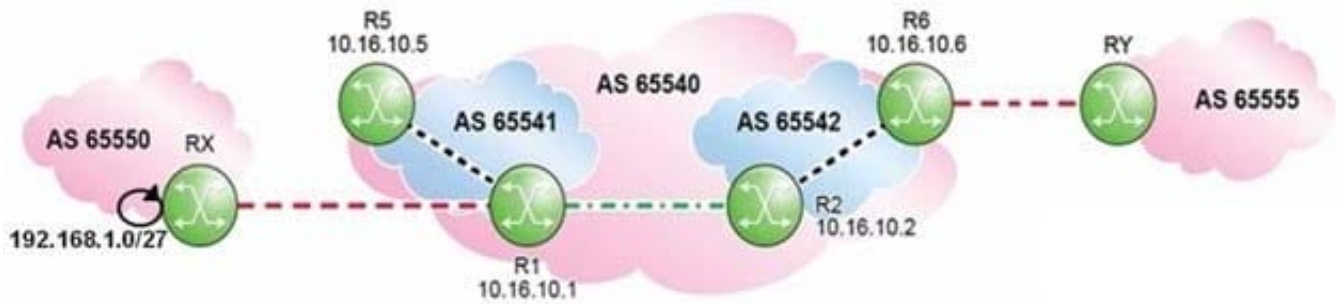
Correct Answer: D

---



### QUESTION 5

Click the exhibit.



Which of the following is a valid BGP configuration for router R2? A. Option A



A. R2>config>router>bgp# info

```
-----  
group "Conf-eBGP"  
  peer-as 65541  
  neighbor 10.16.10.1  
  exit  
exit  
group "Member-AS"  
  neighbor 10.16.10.6  
  peer-as 65542  
  exit  
exit  
no shutdown
```

B. R2>config>router>bgp# info

```
-----  
group "Conf-eBGP"  
  peer-as 65541  
  neighbor 10.16.10.1  
  exit  
exit  
group "Member-AS"  
  neighbor 10.16.10.6  
  peer-as 65540  
  exit  
exit  
no shutdown
```

C. R2>config>router>bgp# info

```
-----  
group "Conf-eBGP"  
  peer-as 65540  
  neighbor 10.16.10.1  
  exit  
exit  
group "Member-AS"  
  neighbor 10.16.10.6  
  peer-as 65542  
  exit  
exit  
no shutdown
```

D. R2>config>router>bgp# info

```
-----  
group "Conf-BGP"  
  peer-as 65540  
  neighbor 10.16.10.1  
  exit  
  neighbor 10.16.10.6  
  exit  
exit  
no shutdown
```



B. Option B

C. Option C

D. Option D

Correct Answer: A

[4A0-102 Study Guide](#)

[4A0-102 Exam Questions](#)

[4A0-102 Braindumps](#)