



4A0-102^{Q&As}

Alcatel-Lucent Border Gateway Protocol

Pass Alcatel-Lucent 4A0-102 Exam with 100% Guarantee

Free Download Real Questions & Answers **PDF** and **VCE** file from:

<https://www.passapply.com/4a0-102.html>

100% Passing Guarantee
100% Money Back Assurance

Following Questions and Answers are all new published by Alcatel-Lucent Official Exam Center

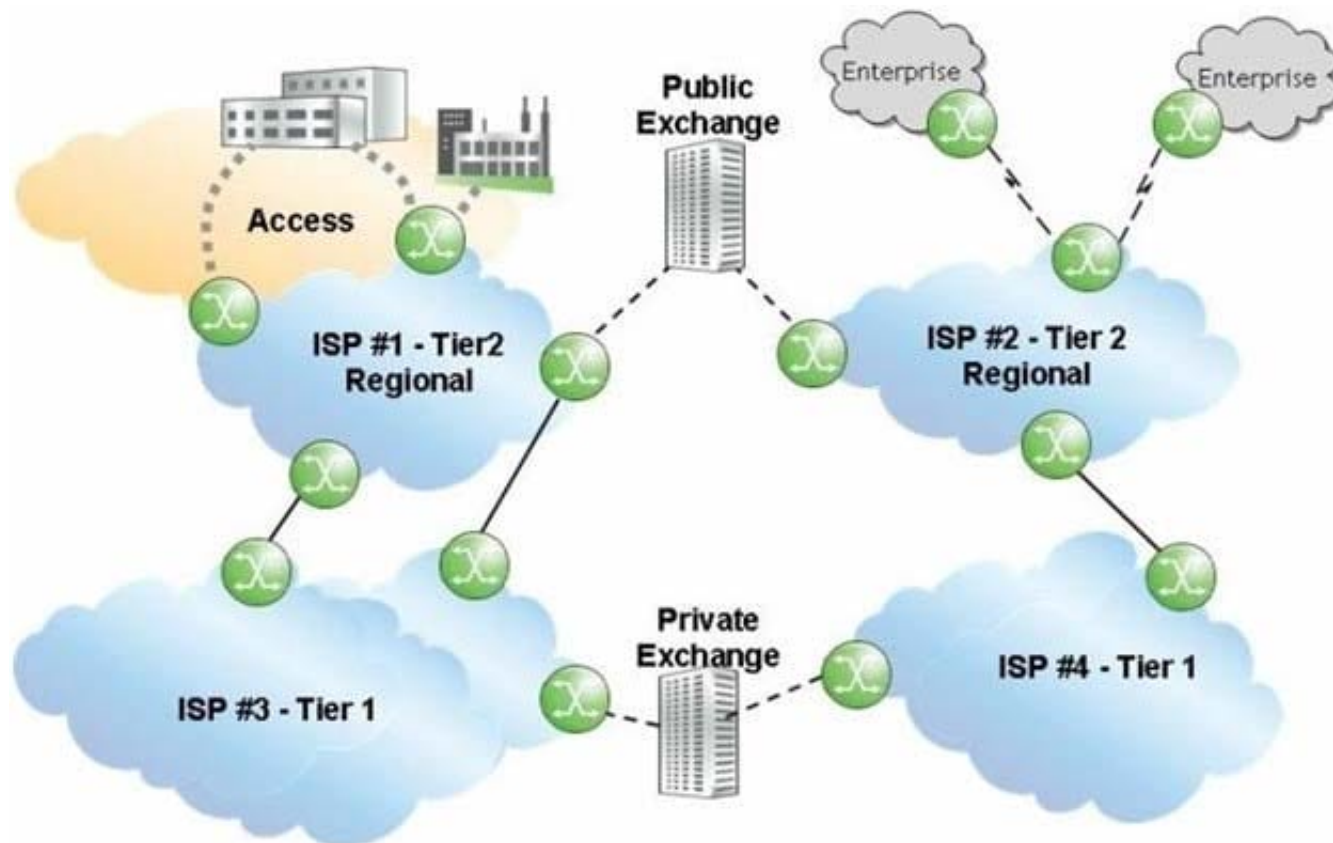
-  **Instant Download** After Purchase
-  **100% Money Back** Guarantee
-  **365 Days** Free Update
-  **800,000+** Satisfied Customers





QUESTION 1

Click the exhibit.



Given that ISP 1 and ISP 2 are Tier 2 providers, and that ISP 3 and ISP 4 are Tier 1 providers, what is the most likely relationship between ISP 1 and the other ISPs?

- A. ISP 1 has a peering relationship with ISP 2 and ISP 4.
- B. ISP 1 has a peering relationship with ISP 2 and a transit relationship with ISP 3.
- C. ISP 1 has a peering relationship with ISP 2 and ISP 3.
- D. ISP 1 has a transit relationship with ISP 2 and ISP 4.
- E. ISP 1 has a transit relationship with ISP 2 and a peering relationship with ISP 3.

Correct Answer: B

QUESTION 2

Which of the following is NOT a goal of BGP routing policies?

- A. To protect external networks from instability.

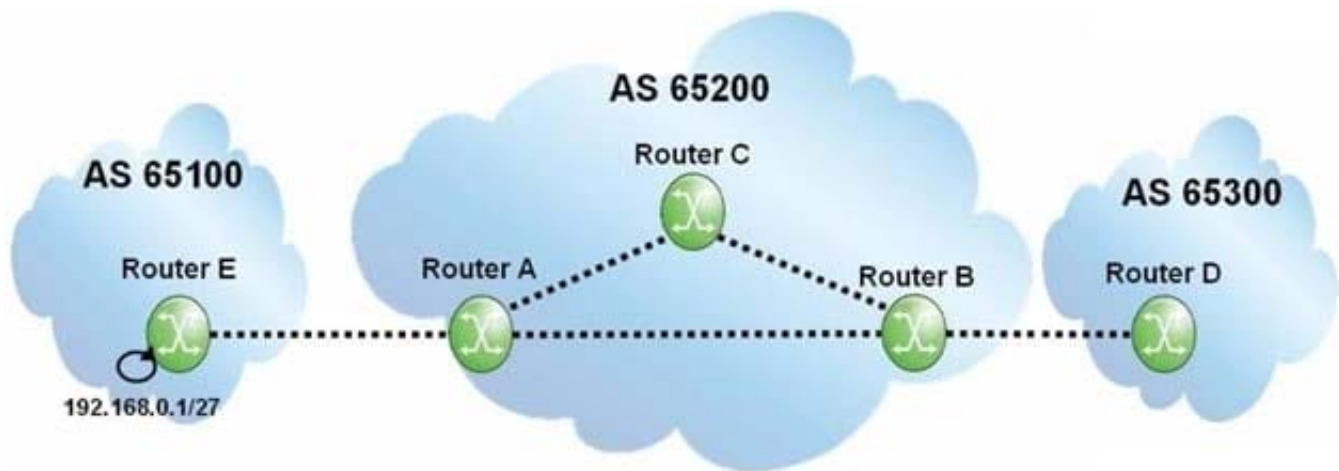


- B. To communicate the architecture of an AS to external ASs.
- C. To protect the local AS and other external ASs from bad NLRI.
- D. To optimize ingress and egress traffic patterns to best serve the users of the AS.

Correct Answer: B

QUESTION 3

Click the exhibit.



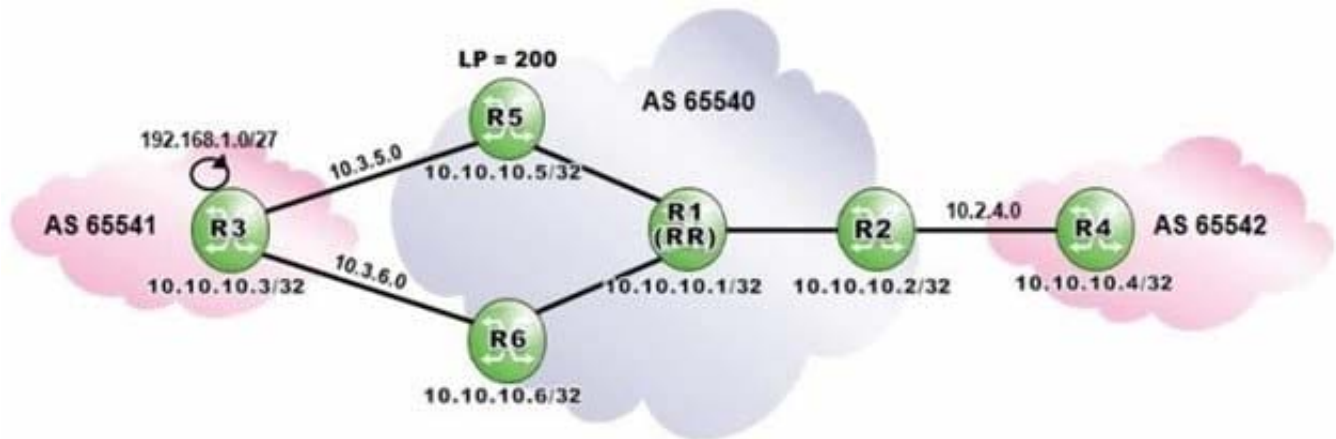
Assuming that none of the routers within AS 65200 is configured with next-hop-self", what will the BGP update for the 192.168.0.1/27 prefix contain when it arrives at router B?

- A. AS Path of 65200 65100, Next Hop of router A.
- B. AS Path of 65200 65100, Next Hop of router E.
- C. AS Path of 65100, Next Hop of router E.
- D. AS Path of 65100, Next Hop of router A.

Correct Answer: C

QUESTION 4

Click the exhibit.



Router R1 is a route reflector with clients R2, R5 and R6. Prefixes advertised by router R5 have a local preference of 200. Router R3 advertises the prefix 192.168.1.0/27 to routers R5 and R6.

Assuming that router R6 is configured with "advertise-external", what is the expected output of "show router bgp routes" when executed on router R1?

- A. Option A
- B. Option B
- C. Option C
- D. Option D

Correct Answer: D

QUESTION 5

Which of the following routes is NOT considered an internal route?

- A. A route received from a BGP peer within the same AS.
- B. A route originated by a router in a different cluster of the same AS.
- C. A route received from a BGP peer from a different member AS of a confederation.
- D. A route received from a BGP peer from the same member AS of a confederation.

Correct Answer: C

[4A0-102 VCE Dumps](#)

[4A0-102 Practice Test](#)

[4A0-102 Study Guide](#)