



4A0-102^{Q&As}

Alcatel-Lucent Border Gateway Protocol

Pass Alcatel-Lucent 4A0-102 Exam with 100% Guarantee

Free Download Real Questions & Answers **PDF** and **VCE** file from:

<https://www.passapply.com/4a0-102.html>

100% Passing Guarantee
100% Money Back Assurance

Following Questions and Answers are all new published by Alcatel-Lucent Official Exam Center

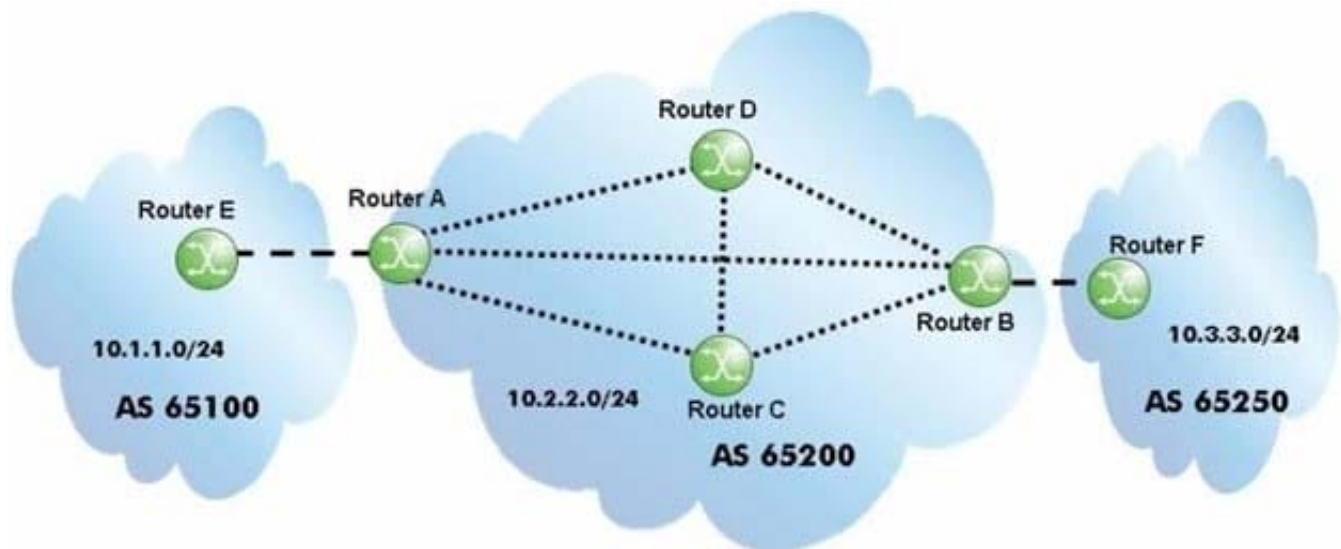
- ⚙️ **Instant Download** After Purchase
- ⚙️ **100% Money Back** Guarantee
- ⚙️ **365 Days** Free Update
- ⚙️ **800,000+** Satisfied Customers





QUESTION 1

Click the exhibit.



Over which BGP session will router B learn the 10.1.1.0/24 prefix?

- A. The session between router A and router B.
- B. The session between router C and router B.
- C. The session between router D and router B.
- D. Router B will learn the prefix over all of the sessions, then it will choose the best route.

Correct Answer: A

QUESTION 2

Which of the following is NOT considered an option of export policies?

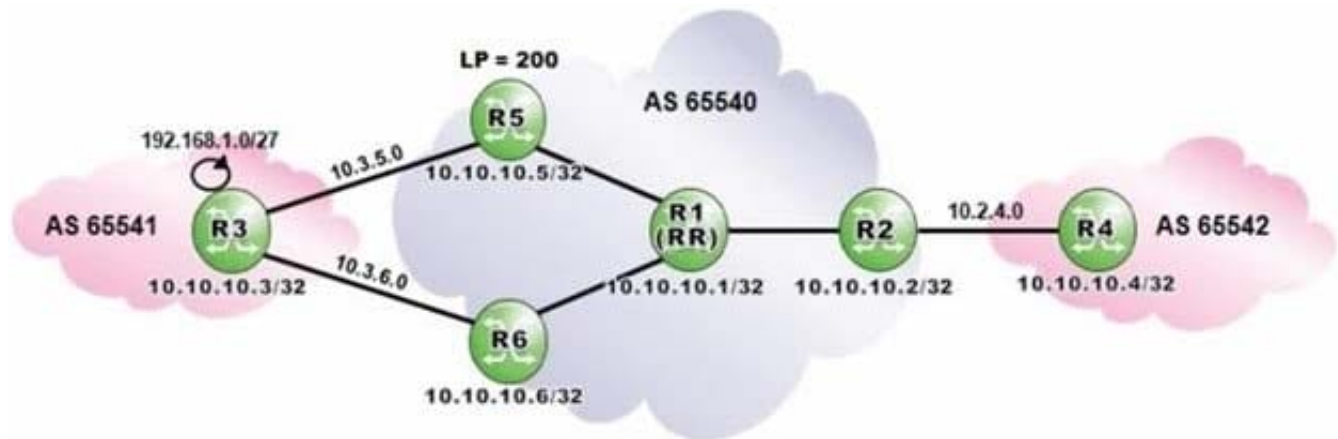
- A. Advertising customer networks into BGP.
- B. Sending aggregates that summarize the AS s address space.
- C. Sending MEDs to influence ingress traffic from peers.
- D. Preventing unwanted NLRI from entering the AS.

Correct Answer: D

QUESTION 3



Click the exhibit.



Router R1 is a route reflector with clients R2, R5 and R6. Prefixes advertised by router R5 have a local preference of 200. Router R3 advertises the prefix 192.168.1.0/27 to routers R5 and R6.

Assuming that none of the routers in AS 65540 is configured with "advertise-external", what is the expected output of "show router bgp routes" on router R2?

- A. Option A
- B. Option B
- C. Option C
- D. Option D

Correct Answer: A

QUESTION 4

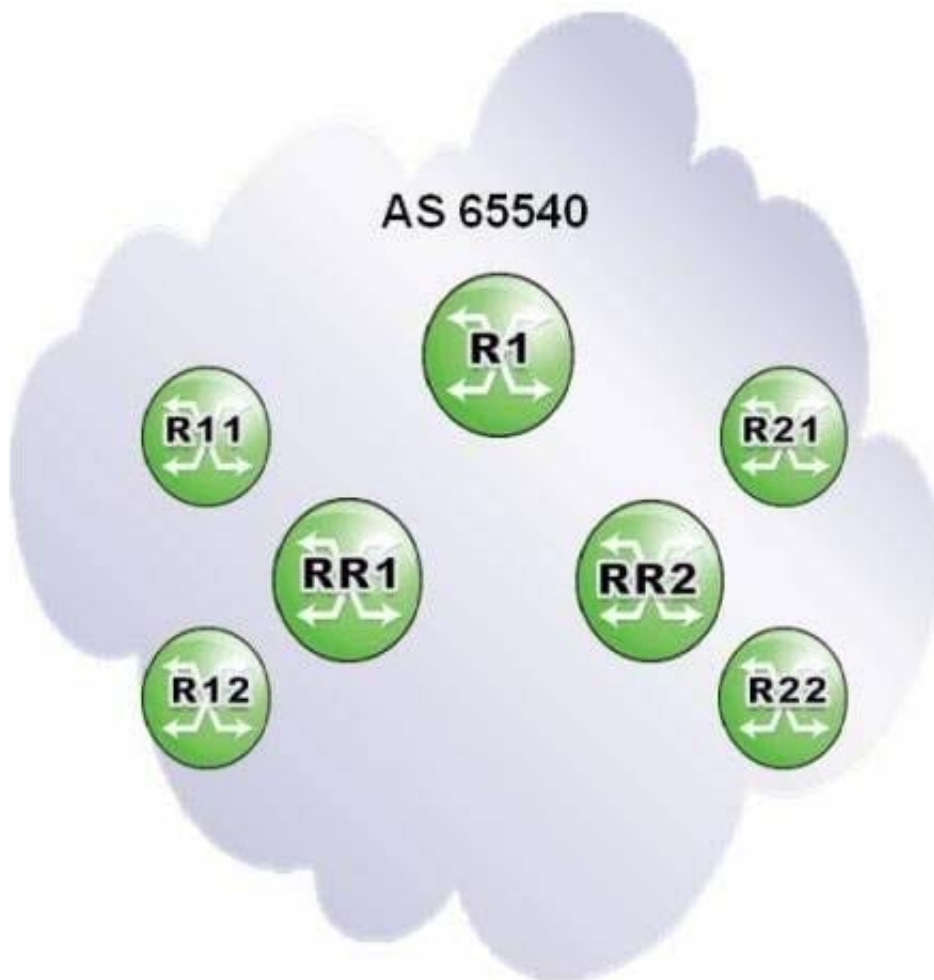
Why is a full mesh of iBGP peers required?

- A. To ensure proper route propagation inside a transit AS.
- B. To ensure that all routers are directly connected.
- C. To ensure that all routers run iBGP inside a transit AS.
- D. To maximize control plane scalability.

Correct Answer: A

QUESTION 5

Click the exhibit.



Routers RR1 and RR2 are route reflectors with clients R1x and R2x, respectively. Routers RR1 and RR2 are non-clients of each other, and router R1 is a non-client of both.

Which of the following regarding BGP sessions in AS 65540 is TRUE?

- A. Router R1 must have at least one BGP session to each of routers R1x and R2x.
- B. Routers R1, RR1 and RR2 must be fully meshed.
- C. Routers R1x and R2x must have at least one BGP session between them.
- D. Routers R1x as well as routers R2x must be fully meshed.

Correct Answer: B

[Latest 4A0-102 Dumps](#)

[4A0-102 PDF Dumps](#)

[4A0-102 Braindumps](#)