



4A0-102^{Q&As}

Alcatel-Lucent Border Gateway Protocol

Pass Alcatel-Lucent 4A0-102 Exam with 100% Guarantee

Free Download Real Questions & Answers **PDF** and **VCE** file from:

<https://www.passapply.com/4a0-102.html>

100% Passing Guarantee
100% Money Back Assurance

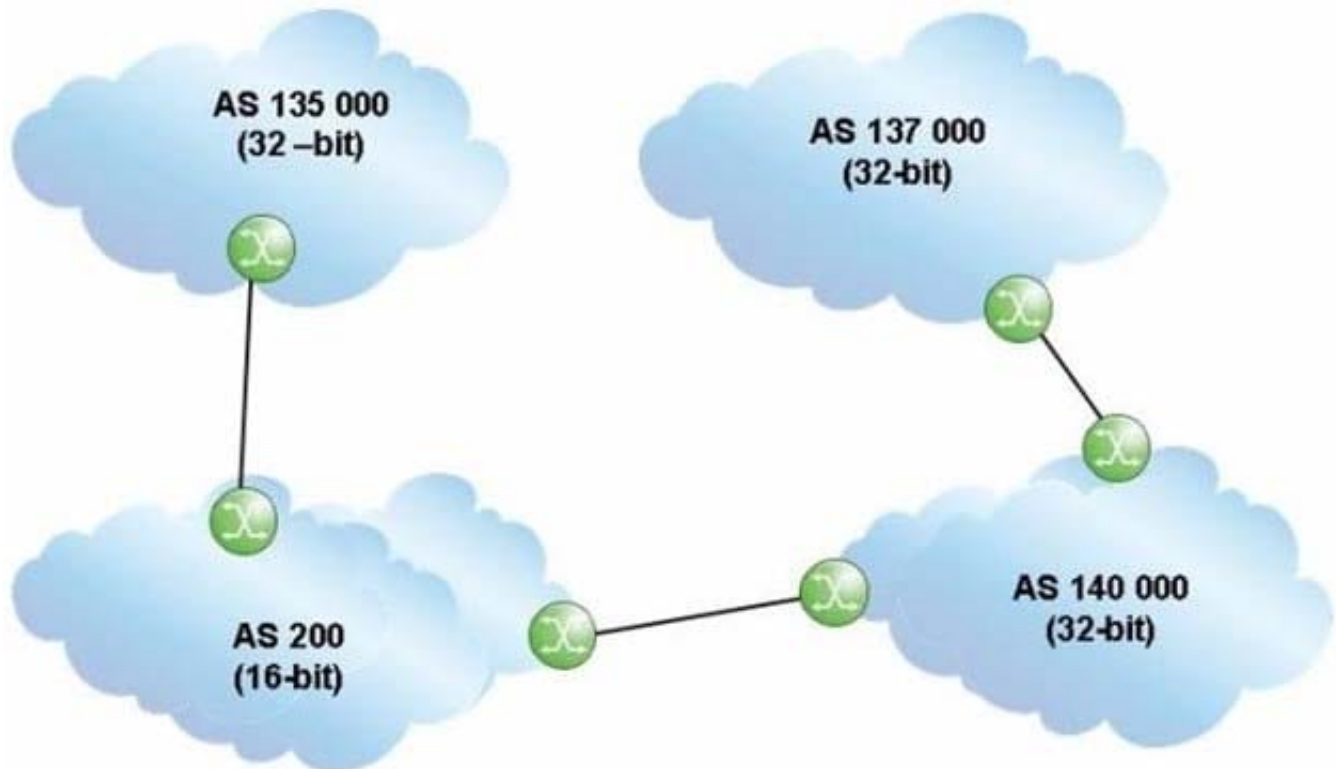
Following Questions and Answers are all new published by Alcatel-Lucent Official Exam Center

- ⚙ **Instant Download** After Purchase
- ⚙ **100% Money Back** Guarantee
- ⚙ **365 Days** Free Update
- ⚙ **800,000+** Satisfied Customers



**QUESTION 1**

Click the exhibit.



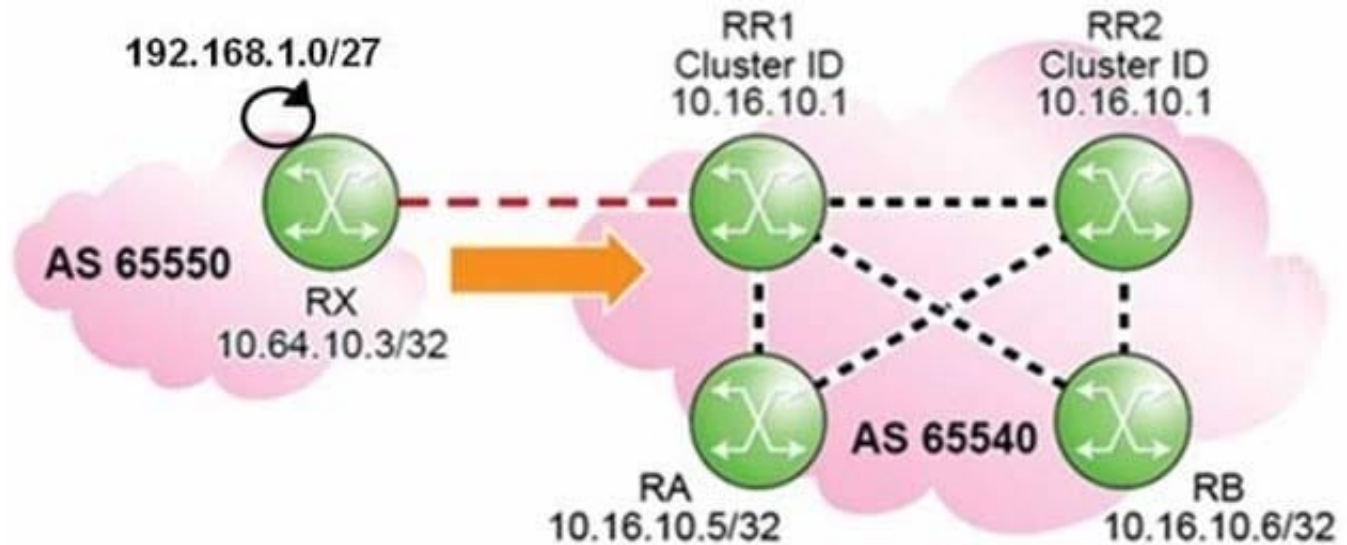
An update travels from AS 137000 to AS 135000, traversing both 32-bit and 16-bit AS Paths. What AS Path is seen by AS 200?

- A. 140000 137000
- B. 137000 140000
- C. 23456 23456
- D. 200 140000 137000

Correct Answer: C

QUESTION 2

Click the exhibit.



Routers RR1 and RR2 are route reflectors with the same Cluster-ID. When the update for prefix 192.168.1.0/27 is received at router RA2, what are the Originator_ID and Cluster_List attributes?

- A. Originator_ID of RR1; and Cluster_List of 10.16.10.1.
- B. Originator_ID of RX; and Cluster_List of 10.16.10.1.
- C. Originator_ID of RR1; and the Cluster_List is not set.
- D. Neither the Originator_ID nor the Cluster_List is set.

Correct Answer: D

QUESTION 3

BGP is configured on two peers, routers A and B. Router A is configured with a Hold Time timer of 60 seconds and a Keepalive timer of 25 seconds. Router B is configured with a Hold Time timer of 90 seconds and a Keepalive timer of 70 seconds.

What will the active Keepalive timer be on router B?

- A. 70 seconds
- B. 25 seconds
- C. 20 seconds
- D. 30 seconds

Correct Answer: C

QUESTION 4

What are the well-known mandatory BGP attributes?

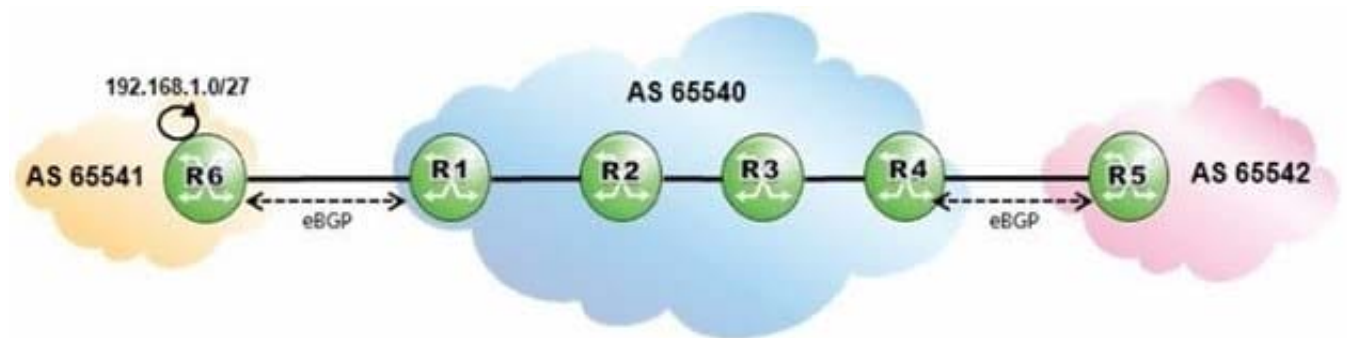


- A. Origin, Next Hop and Local Preference.
- B. Local preference, AS Path and Next Hop.
- C. Aggregator, Next Hop and AS Path.
- D. AS Path, Next Hop and Origin.

Correct Answer: D

QUESTION 5

Click on the exhibit.



AS 65540 is using MPLS to provide BGP shortcuts for its iBGP routing. AS 65541 is advertising prefix 192.168.1.0/27 into BGP. Which routers have the BGP update for the advertised prefix in their BGP table?

- A. Routers R1, R2, R3, R4 and R5.
- B. Routers R1 and R4 only.
- C. Routers R1, R2, R3 and R4 only.
- D. Routers R1, R4 and R5 only.

Correct Answer: D

[4A0-102 PDF Dumps](#)

[4A0-102 Practice Test](#)

[4A0-102 Exam Questions](#)