



# 4A0-100<sup>Q&As</sup>

Alcatel-Lucent Scalable IP Networks

## Pass Alcatel-Lucent 4A0-100 Exam with 100% Guarantee

Free Download Real Questions & Answers **PDF** and **VCE** file from:

<https://www.passapply.com/4a0-100.html>

100% Passing Guarantee  
100% Money Back Assurance

Following Questions and Answers are all new published by Alcatel-Lucent Official Exam Center

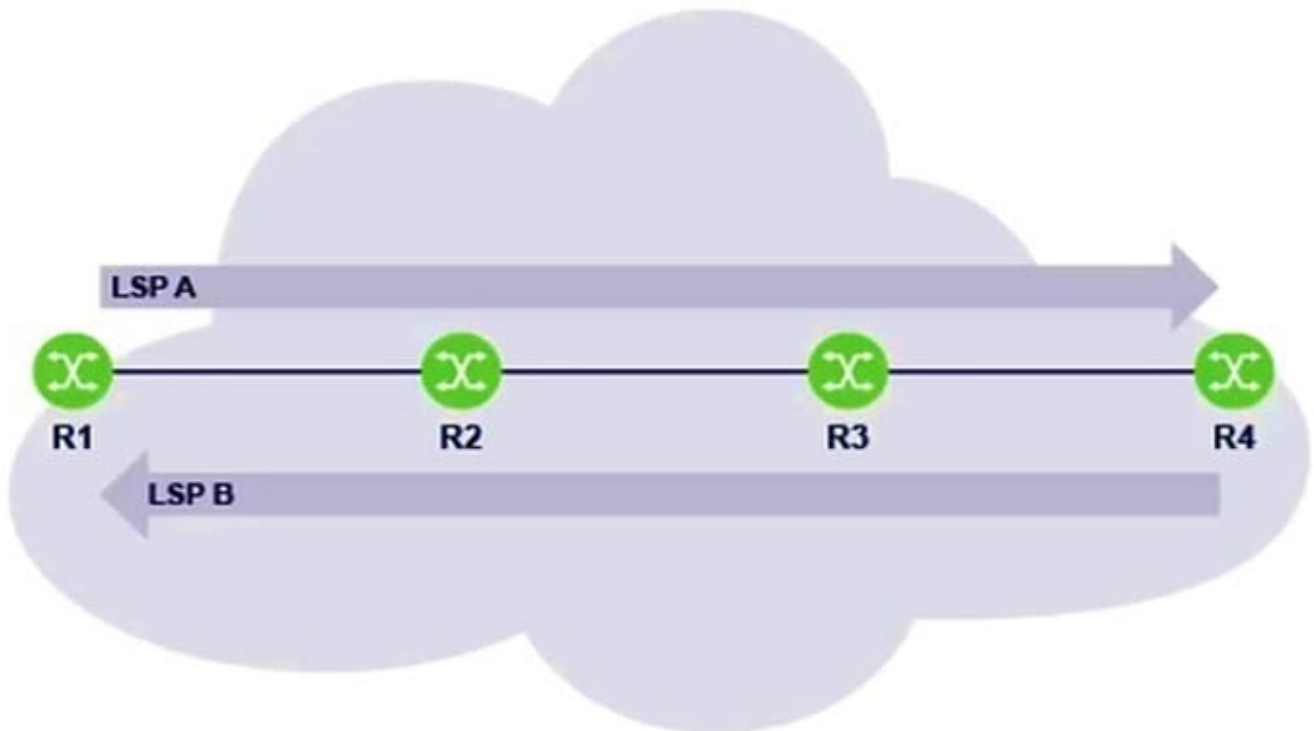
-  **Instant Download** After Purchase
-  **100% Money Back** Guarantee
-  **365 Days** Free Update
-  **800,000+** Satisfied Customers





### QUESTION 1

Which of the following statements about router R3 is TRUE?



- A. Router R3 is the iLER for LSP B.
- B. Router R3 is the eLER for LSP A.
- C. Router R is an LSR for both LSP A and LSP B.
- D. Router R3 is LSR for LSP A and an LER for LSP B.

Correct Answer: C

### QUESTION 2

From the CE perspective, how does a VPLS operate?

- A. A VPLS operates as if 2 sites are directly connected by a single cable.
- B. A VPLS operates as if multiple sites are connected through a single switched LAN.
- C. A VPLS operates as if multiple sites are connected through a single router.
- D. A VPLS operates as if multiple sites are connected through a series of private point-to-point routed connections.

Correct Answer: B



### QUESTION 3

Which of the following statements is TRUE of Layer 3 addressing?

- A. Internet devices on the same network can have the same Layer 3 address in different broadcast domains.
- B. Every Host device must have a unique Layer 3 address in order to access the Internet.
- C. Internet devices need unique Layer 3 addresses to communicate directly with upper layers.
- D. A router must have only one address to allow it to be uniquely identified.

Correct Answer: B

---

### QUESTION 4

Which of the following is required if devices on different VLANs wish to communicate with each other?

- A. Devices on different VLANs cannot communicate with each other.
- B. Devices on different VLANs can communicate with each other if they are connected to the same switch.
- C. Devices on different VLANs can communicate with each other if the switches are connected using a single high-bandwidth port.
- D. Devices on different VLANs can communicate with each other if there is a router to connect the VLANs.

Correct Answer: D

---

### QUESTION 5

Which of the following best describes the operation of the Media Dependent Adapter (MDA)?

- A. The MDA contains the flexible fast path complex used for forwarding data.
- B. Excess data is discarded by the MDA and the remaining data forwarded for QoS processing.
- C. The MDA buffers data and applies Quality of Service (QoS) to classify and treat the data appropriately.
- D. The MDA converts data from its incoming physical format into an internal format and provides some minimal buffering.

Correct Answer: D