



4A0-100^{Q&As}

Alcatel-Lucent Scalable IP Networks

Pass Alcatel-Lucent 4A0-100 Exam with 100% Guarantee

Free Download Real Questions & Answers **PDF** and **VCE** file from:

<https://www.passapply.com/4a0-100.html>

100% Passing Guarantee
100% Money Back Assurance

Following Questions and Answers are all new published by Alcatel-Lucent Official Exam Center

- ⚙️ **Instant Download** After Purchase
- ⚙️ **100% Money Back** Guarantee
- ⚙️ **365 Days** Free Update
- ⚙️ **800,000+** Satisfied Customers





QUESTION 1

Given the associated prefix value, which of the following is a valid host address?

- A. 172.16.224.255/18
- B. 255.255.255.255/32
- C. 224.1.2.1/8
- D. 192.168.24.59/30

Correct Answer: A

QUESTION 2

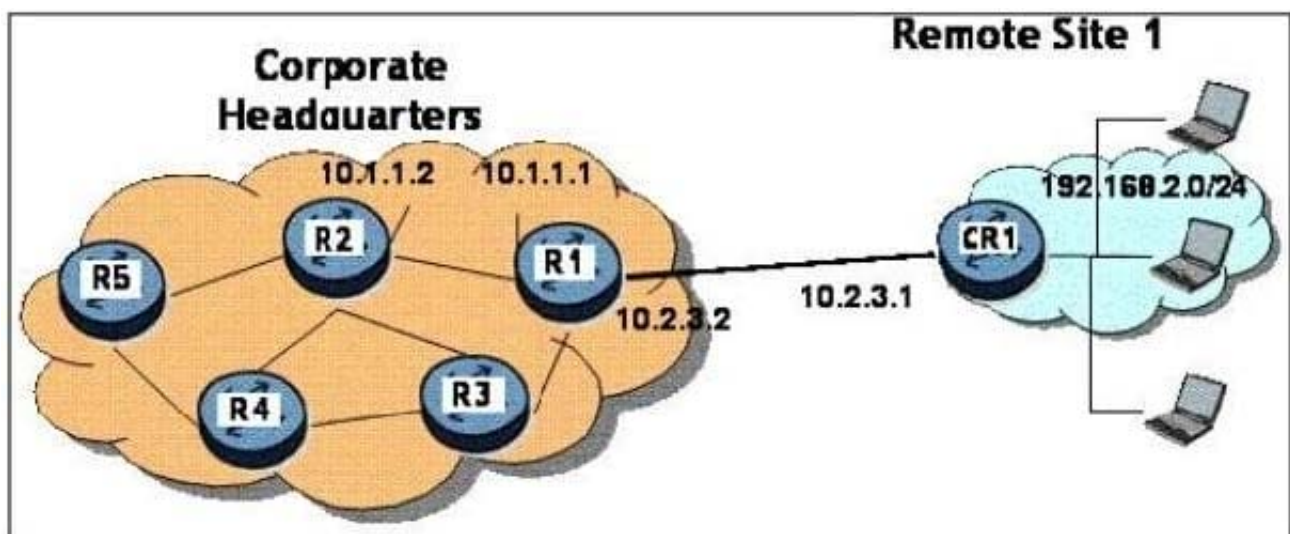
Which of the following best describes a hub?

- A. A passive device used to connect cables without signal amplification.
- B. A device that receives and retransmits data without Layer 2 header inspection.
- C. A device that receives and retransmits data based on the Layer 2 destination address.
- D. A device that receives and retransmits data based on the Layer 3 destination address.

Correct Answer: B

QUESTION 3

Based on the network diagram (click the Exhibit Button).



R2 wants to connect a host on 192.168.2.0/24 behind CR1. What is the correct next-hop to use, assuming R1 is



configured correctly?

- A. 10.2.3.2
- B. 10.1.1.1
- C. 10.2.3.1
- D. 10.1.1.2

Correct Answer: B

QUESTION 4

Which of the following SAP types can be associated to a VPWS? (Choose 3)

- A. Ethernet
- B. ATM
- C. Token Ring
- D. Frame Relay

Correct Answer: ABD

QUESTION 5

What must occur for a LAG to become operational?

- A. There must be multiple ports assigned to the LAG.
- B. All ports in the LAG must be configured with the same characteristics.
- C. Auto-negotiation must be enabled on all ports in the LAG.
- D. All of the above.

Correct Answer: B

[Latest 4A0-100 Dumps](#)

[4A0-100 PDF Dumps](#)

[4A0-100 Practice Test](#)