



4A0-100^{Q&As}

Alcatel-Lucent Scalable IP Networks

Pass Alcatel-Lucent 4A0-100 Exam with 100% Guarantee

Free Download Real Questions & Answers **PDF** and **VCE** file from:

<https://www.passapply.com/4a0-100.html>

100% Passing Guarantee
100% Money Back Assurance

Following Questions and Answers are all new published by Alcatel-Lucent Official Exam Center

-  **Instant Download** After Purchase
-  **100% Money Back** Guarantee
-  **365 Days** Free Update
-  **800,000+** Satisfied Customers





QUESTION 1

A set of tasks that move a packet from its entry into an IP network to its exit from the IP network. This describes:

- A. IP routing.
- B. IP protocol.
- C. IP encapsulation.
- D. IP tunneling.

Correct Answer: A

QUESTION 2

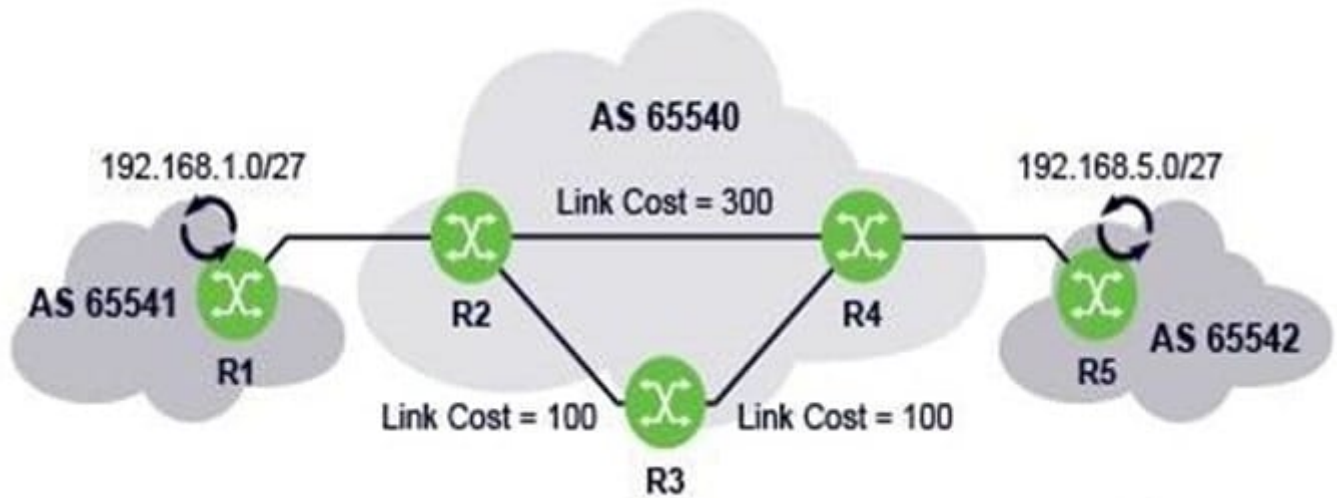
Which field in the TCP header is used by the receiver to indicate the number of segments it can receive?

- A. Checksum
- B. SYN
- C. Destination port
- D. Window size
- E. MTU

Correct Answer: D

QUESTION 3

Which of the following routing protocols SHOULD NOT be used between routers R1 and R2?



- A. Static Routing
- B. Default Routing
- C. OSPF
- D. BGP

Correct Answer: C

QUESTION 4

Which field in the TCP header is used by the receiver to indicate how many segments it can receive?

- A. Checksum
- B. SYN
- C. Destination port
- D. Window size
- E. MTU

Correct Answer: D

QUESTION 5

What is the purpose of TCP flow control?

- A. It restricts the sender from sending too much data when there is congestion in the network.
- B. It allows the receiver to control the rate at which the sender transmits data.



C. It forces the sender to send only one segment at a time.

D. It allows the receiver to drop segments without the sender having to retransmit.

Correct Answer: B

[Latest 4A0-100 Dumps](#)

[4A0-100 Exam Questions](#)

[4A0-100 Braindumps](#)