



# 412-79V8<sup>Q&As</sup>

EC-Council Certified Security Analyst (ECSA)

## Pass EC-COUNCIL 412-79V8 Exam with 100% Guarantee

Free Download Real Questions & Answers **PDF** and **VCE** file from:

<https://www.passapply.com/412-79v8.html>

100% Passing Guarantee  
100% Money Back Assurance

Following Questions and Answers are all new published by EC-COUNCIL Official Exam Center

- ⚙️ **Instant Download** After Purchase
- ⚙️ **100% Money Back** Guarantee
- ⚙️ **365 Days** Free Update
- ⚙️ **800,000+** Satisfied Customers





### QUESTION 1

One of the steps in information gathering is to run searches on a company using complex keywords in Google.

The screenshot shows the Google Advanced Search interface with the following settings:

Filter	Selected Option	Description
terms appearing	anywhere in the page	Search for terms in the whole page, page title, or web address, links to the page you're looking for.
SafeSearch	Show most relevant results	Tell SafeSearch whether to filter sexually explicit content.
reading level	no reading level displayed	Find pages at one reading level or just view the level info.
file type	any format	Find pages in the format you prefer.
usage rights	not filtered by license	Find pages you are free to use yourself.

An "Advanced Search" button is located at the bottom right of the form.

Which search keywords would you use in the Google search engine to find all the PowerPoint presentations containing information about a target company, ROCHESTON?

- A. ROCHESTON fileformat:+ppt
- B. ROCHESTON ppt:filestring
- C. ROCHESTON filetype:ppt
- D. ROCHESTON +ppt:filesearch

Correct Answer: C

### QUESTION 2

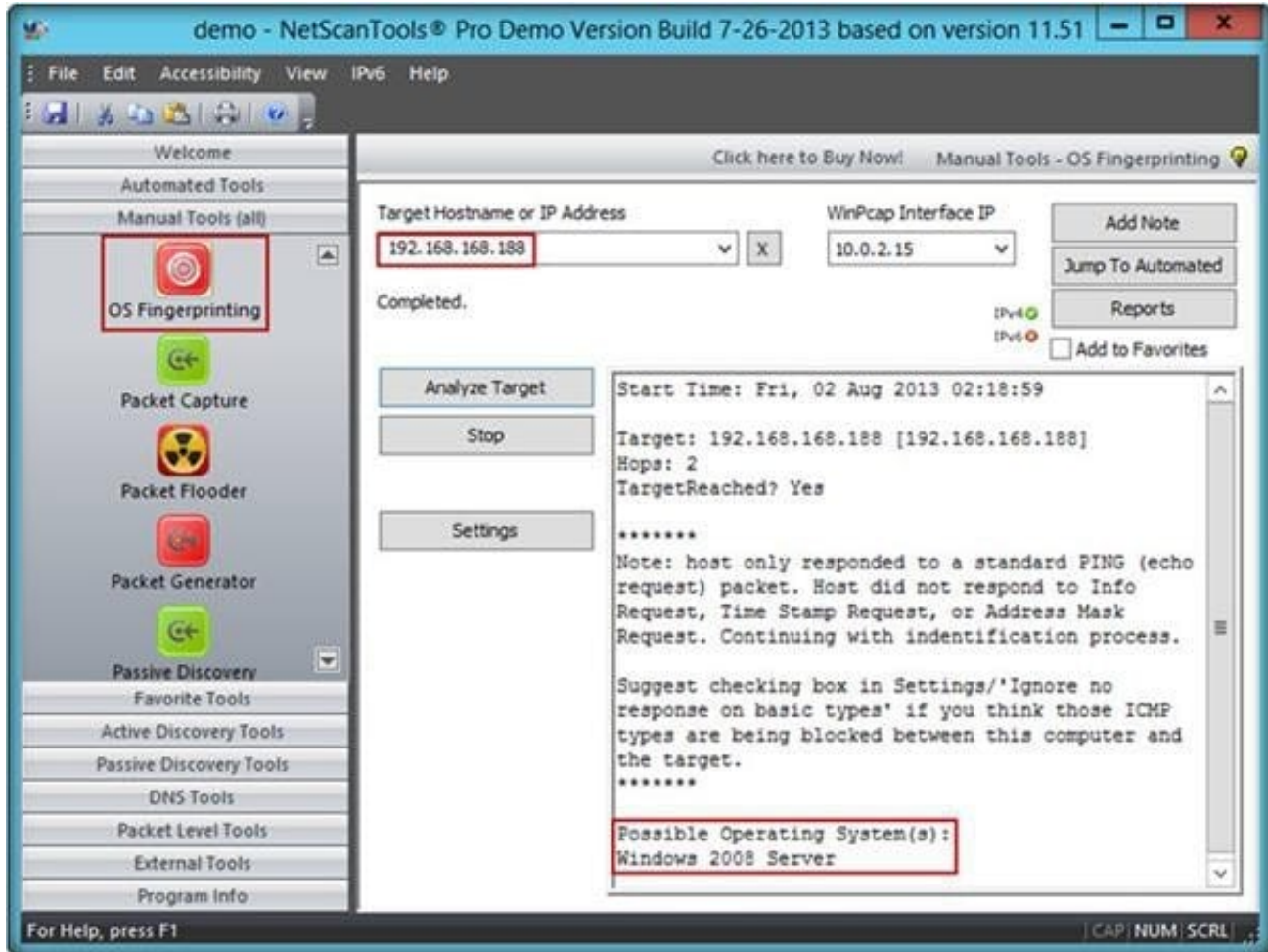
You have compromised a lower-level administrator account on an Active Directory network of a small company in Dallas, Texas. You discover Domain Controllers through enumeration. You connect to one of the Domain Controllers on port 389 using ldp.exe. What are you trying to accomplish here?

- A. Poison the DNS records with false records
- B. Enumerate MX and A records from DNS
- C. Establish a remote connection to the Domain Controller
- D. Enumerate domain user accounts and built-in groups

Correct Answer: D

### QUESTION 3

A penetration tester performs OS fingerprinting on the target server to identify the operating system used on the target server with the help of ICMP packets.



While performing ICMP scanning using Nmap tool, message received/type displays "3 Destination Unreachable[5]" and code 3.

Which of the following is an appropriate description of this response?

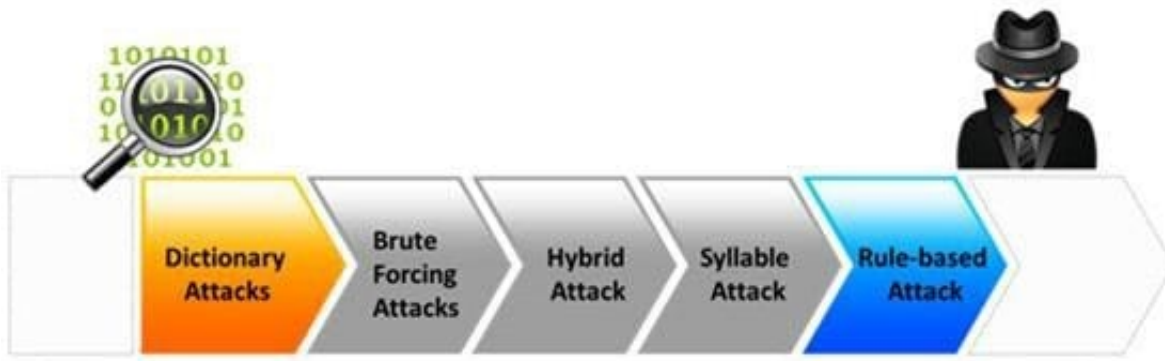
- A. Destination port unreachable
- B. Destination host unavailable
- C. Destination host unreachable
- D. Destination protocol unreachable

Correct Answer: A

#### QUESTION 4

Passwords protect computer resources and files from unauthorized access by malicious users. Using passwords is the most capable and effective way to protect information and to increase the security level of a company.

Password cracking is the process of recovering passwords from data that have been stored in or transmitted by a computer system to gain unauthorized access to a system.



Which of the following password cracking attacks tries every combination of characters until the password is broken?

- A. Brute-force attack
- B. Rule-based attack
- C. Hybrid attack
- D. Dictionary attack

Correct Answer: A

#### QUESTION 5

Which of the following is not a characteristic of a firewall?

- A. Manages public access to private networked resources
- B. Routes packets between the networks
- C. Examines all traffic routed between the two networks to see if it meets certain criteria
- D. Filters only inbound traffic but not outbound traffic

Correct Answer: B

[412-79V8 PDF Dumps](#)

[412-79V8 Practice Test](#)

[412-79V8 Braindumps](#)