



400-007^{Q&As}

Cisco Certified Design Expert (CCDE Written)

Pass Cisco 400-007 Exam with 100% Guarantee

Free Download Real Questions & Answers **PDF** and **VCE** file from:

<https://www.passapply.com/400-007.html>

100% Passing Guarantee
100% Money Back Assurance

Following Questions and Answers are all new published by Cisco
Official Exam Center

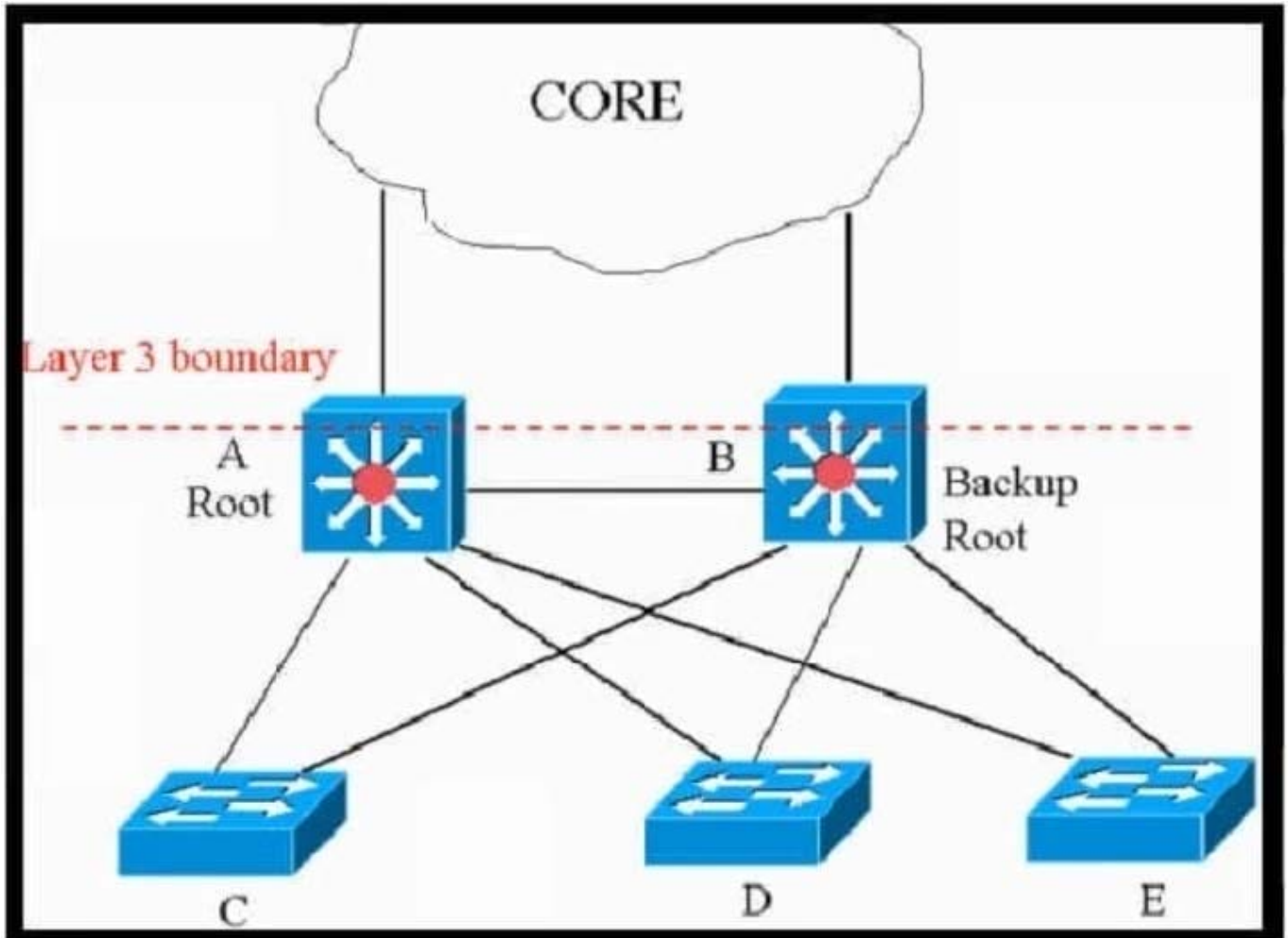
-  **Instant Download** After Purchase
-  **100% Money Back** Guarantee
-  **365 Days** Free Update
-  **800,000+** Satisfied Customers





QUESTION 1

Refer to the exhibit.



This network is running legacy STP 802.1d. Assuming "hello_timer" is fixed to 2 seconds, which parameters can be modified to speed up convergence times after single link/node failure?

- A. Only the maximum_transmission_halt_delay and diameter parameters are configurable parameters in 802.1d to speed up STP convergence process.
- B. The max_age and forward_delay parameters can be adjusted to speed up STP convergence process.
- C. The transit_delay=5 and bpdu_delay=20 are recommended values, considering hello_timer=2 and specified diameter.
- D. Only the transit_delay and bpdu_delay timers are configurable parameters in 802.1d to speed up STP convergence process.

Correct Answer: B

Reference: <https://www.cisco.com/c/en/us/support/docs/lan-switching/spanning-tree-protocol/19120-122.html>



QUESTION 2

An architect prepares a network design for a startup company. The design must be able to meet business requirements while the business grows and divests due to rapidly changing markets. What is the highest priority in this design?

- A. The network should be hierarchical
- B. The network should be modular.
- C. The network should be scalable.
- D. The network should have a dedicated core.

Correct Answer: B

https://community.cisco.com/legacyfs/online/ccde_9781587144615_chapter1.pdf

"Whereas with the modular design approach, if any given module faces an issue such as a security breach or the addition or removal of modules, there should be no need to redesign the network or introduce any effect to the other modules.

Furthermore, breaking complex parts in the network based on a modular approach into manageable blocks will optimize the overall network manageability. In other words, from a network design point of view, modularity can promote design

simplicity, flexibility, fault isolation, and scalability, as shown in Figure 1-7 [10]. At the same time, modularity reduces operational costs and complexities." The diagram shows modularity is the central point.

QUESTION 3

Company XYZ has 30 sites running a legacy private WAN architecture that connects to the Internet via multiple high-speed connections. The company is now redesigning their network and must comply with these design requirements:

1.
Use a private WAN strategy that allows the sites to connect to each other directly and caters for future expansion.
2.
Use the Internet as the underlay for the private WAN.
3.
Securely transfer the corporate data over the private WAN.

Which two technologies should be incorporated into the design of this network? (Choose two.)

- A. S-VTI
- B. IPsec
- C. DMVPN
- D. GET VPN



E. PPTP

Correct Answer: CD

GETVPN alongwith DMVPN can be run over internet, see below: https://lostintransit.se/2016/02/12/ccde-introduction-to-get-vpn-and-get-vpn-design-considerations/?doing_wp_cron=1682702436.4848649501800537109375

QUESTION 4

Company XYZ network runs IPv4 and IPv6 and they want to Introduce a multidomain, multicast-based network. The new design should use a flavor of PIM that forwards traffic using SPT. Which technology meets this requirement?

- A. PIM-DM
- B. PIM-SM
- C. PIM-SSM
- D. BIDIR-PIM

Correct Answer: C

QUESTION 5

The Layer 3 control plane is the intelligence over the network that steers traffic toward its intended destination. Which two techniques can be used in service provider-style networks to offer a more dynamic, flexible, controlled, and secure control plane design? (Choose two.)

- A. access control lists
- B. firewalls
- C. QoS policy propagation with BGP
- D. remote black-holing trigger
- E. prefix lists

Correct Answer: DE

[Latest 400-007 Dumps](#)

[400-007 PDF Dumps](#)

[400-007 Study Guide](#)