



# 3V0-732<sup>Q&As</sup>

VMware Certified Advanced Professional 7 - Cloud Management and Automation Design Exam

**Pass VMware 3V0-732 Exam with 100% Guarantee**

Free Download Real Questions & Answers **PDF** and **VCE** file from:

<https://www.passapply.com/3v0-732.html>

100% Passing Guarantee  
100% Money Back Assurance

Following Questions and Answers are all new published by VMware Official Exam Center

-  **Instant Download** After Purchase
-  **100% Money Back** Guarantee
-  **365 Days** Free Update
-  **800,000+** Satisfied Customers





### QUESTION 1

Which two statements are true regarding a vRealize Automation appliance configured for high availability? (Choose two.)

- A. The vRealize Automation appliance supports active-active high availability for all components except the appliance database.
- B. The appliance database is automatically clustered within the vRealize Automation appliance and failover is a manual operation.
- C. The vRealize Automation appliance supports active-active high availability for all components including the appliance database.
- D. Since the appliance database is automatically clustered within the vRealize Automation appliance, failover is an automated operation.

Correct Answer: AD

Reference <https://docs.vmware.com/en/vRealize-Automation/7.4/com.vmware.vrA.install.upgrade.doc/GUID-71F3A54E-F054-4255-9F7A-E58774B81D95.html>

---

### QUESTION 2

During initial provisioning lifecycle of its vRealize Automation workloads, an architect wants the ability to call an external system during state changes of machines. Which are three acceptable lifecycle states that could be used for calling out to a system? (Choose three.)

- A. WFStubMachineRetired
- B. WFStubMachineProvisioned
- C. WFStubMachineDisposing
- D. WFStubExtendMachine
- E. WFStubMachineExpired

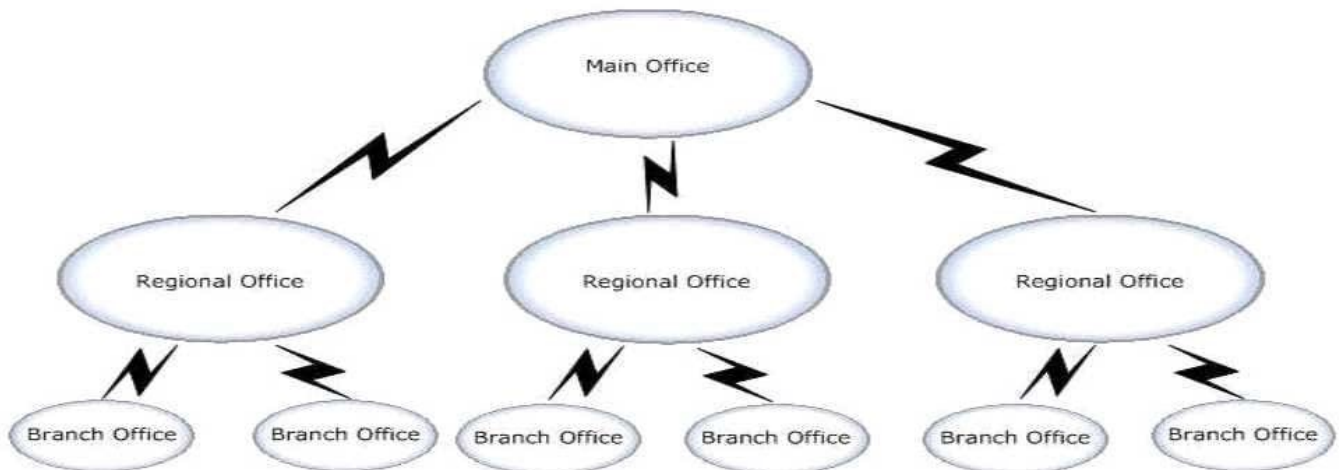
Correct Answer: BCE

Reference: <https://vmguru.com/2015/10/vrealize-automation-7-lifecycle-extensibility/>

---

### QUESTION 3

A company has a main office, three regional offices, and six branches offices. The network links are configured as shown in the exhibit. View the Exhibit:



During information gathering, an architect records: The regional offices are located in secure bunkers. The CTO feels this would be a good location for all the vRealize Automation components to meet their BC/DR objectives. However, the CTO is looking for the best design while maintaining their very high security requirements. The branch offices are located in very remote locations with unpredictable network performance. Reliance on the main and regional offices needs to be minimal while still allowing provisioning of machines in the branch offices. The branch offices consist of three host vSphere clusters. There is synchronous vSphere Metro Storage Cluster (vMSC) between the regional offices as well as replicated backups between the regional offices with replication running nightly. The CEO wants to have the lowest possible RPO and RTO of the vRealize portal including the ability to manage already provisioned machines while NOT increasing the amount of data being replicated between the regional offices as much as possible. Referring to the exhibit, which two design specifications can the architect recommend to meet requirements? (Choose two.)

- A. distributed vRealize Automation management solution in the main office
- B. vSphere agents in each of the branch offices
- C. distributed vRealize Automation management solution in each of the regional offices
- D. distributed vRealize Automation management solution across the regional offices
- E. vSphere agents in the regional offices that manage the regional and branch offices

Correct Answer: DE

#### QUESTION 4

A company's workload deployments from its VMware vRealize Automation environment have sustained a significant increase. Management has instituted a new SLA requirement for the deployment environment to guarantee availability to consumers.

Which three design recommendations will address the requirements of this scenario? (Choose three.)

- A. Deploy two Distributed Execution Manager (DEM) worker instances in the primary datacenter.
- B. Deploy one or more additional vRealize Automation appliances.
- C. Migrate a vRealize Orchestrator internal instance to a clustered external instance.
- D. Incorporate a load balancing solution.



E. Migrate an internal vPostgres database to a clustered external instance.

Correct Answer: ABD

---

#### QUESTION 5

A company is looking for a showback and chargeback method to allocate costs for all workloads provisioned using the VMware Cloud Management Platform. The Cloud Architecture team must ensure that costs are calculated dynamically every 24 hours, and applied based on the application type and size.

Which two steps should be taken to ensure this data is captured? (Choose two.)

- A. Specify "vRealize Automation Blueprint" as the Compute grouping strategy.
- B. Ensure that vRealize Business for Cloud is the default cost provider for vRealize Automation.
- C. Specify "vRealize Automation Reservation" as the Compute grouping strategy.
- D. Set pricing for the Compute Rates for vCPU and per GB RAM and Storage Rates in vRealize Business for Cloud.
- E. Ensure that the data collection interval for vRealize Business is set to 24 hours.

Correct Answer: BD

[3V0-732 Practice Test](#)

[3V0-732 Exam Questions](#)

[3V0-732 Braindumps](#)