



350-601^{Q&As}

Implementing and Operating Cisco Data Center Core Technologies
(DCCOR)

Pass Cisco 350-601 Exam with 100% Guarantee

Free Download Real Questions & Answers **PDF** and **VCE** file from:

<https://www.passapply.com/350-601.html>

100% Passing Guarantee
100% Money Back Assurance

Following Questions and Answers are all new published by Cisco
Official Exam Center

-  **Instant Download** After Purchase
-  **100% Money Back** Guarantee
-  **365 Days** Free Update
-  **800,000+** Satisfied Customers





QUESTION 1

An engineer is duplicating an existing Cisco UCS setup at a new site. What are two characteristics of a logical configuration backup of a Cisco UCS Manager database? (Choose two.)

- A. contains the AAA and RBAC configurations
- B. contains a file with an extension.tgz that stores all of the configurations
- C. contains the configuration organizations and locales
- D. contains all of the configurations
- E. contains the VLAN and VSAN configurations

Correct Answer: CE

Logical configuration--An XML file that includes all logical configuration settings such as service profiles, VLANs, VSANs, pools, and policies. You can use the file generated from this backup to import these configuration settings to the original

fabric interconnect or to a different fabric interconnect.

You cannot use this file for a system restore.

QUESTION 2

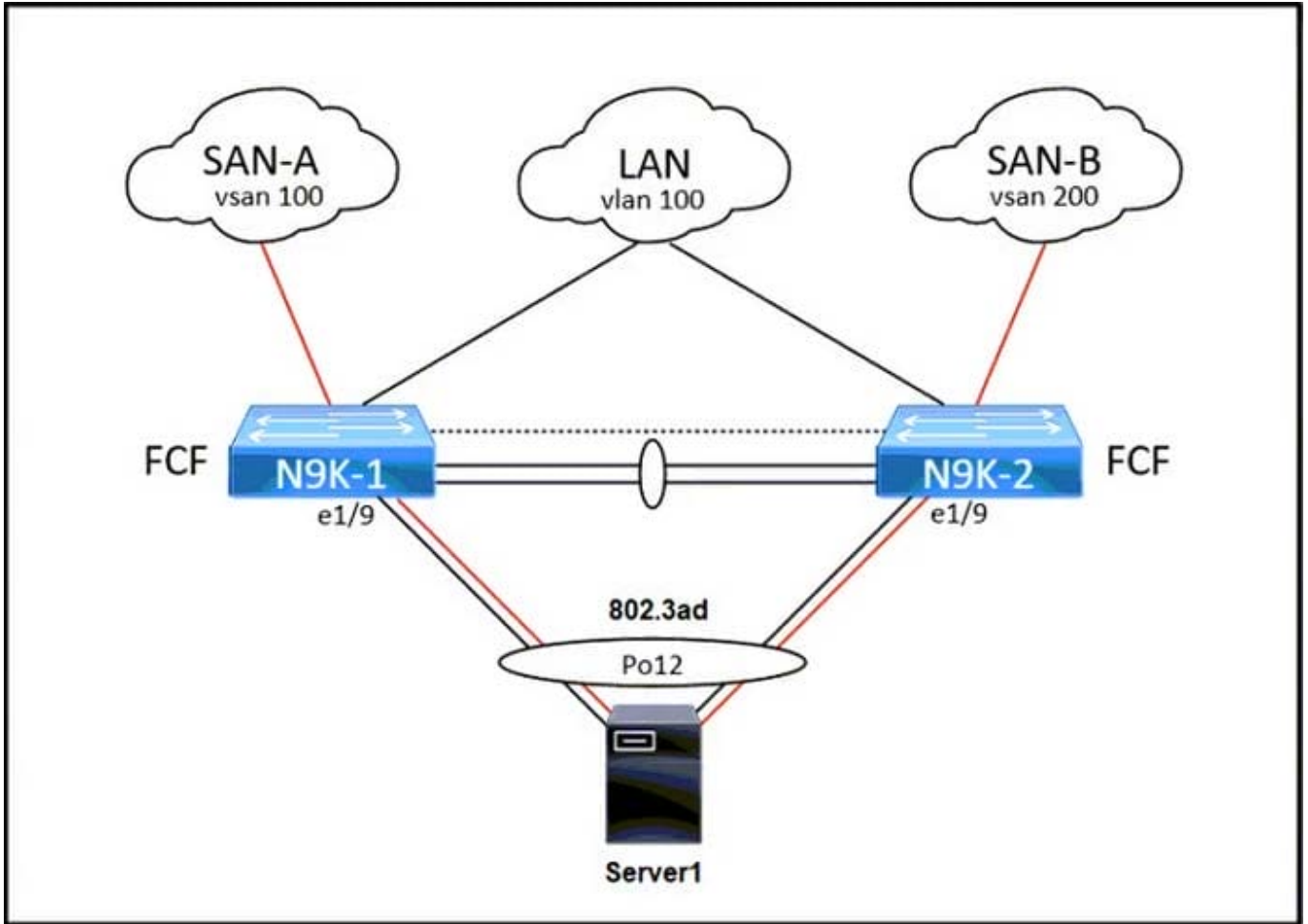
An engineer must migrate a Cisco UCS C-Series server from Cisco SingleConnect to direct integration mode. The Cisco UCS Manager Rack Server Discovery Policy and Rack Management Connection Policy are set to immediate and Auto-Acknowledge. Which set of steps accomplishes this task?

- A. Disconnect the cables from the EFX. Connect the cables to appliance ports on the fabric interconnect Reset the Cisco IMC of the server.
- B. Disconnect the cables from the FEX. Connect the cables to server ports on the fabric interconnect Reset the Cisco IMC of the server.
- C. Disconnect the cables from the FEX. Connect the cables to appliance ports on the fabric interconnect Reacknowledge the sever
- D. Disconnect the cables from the FEX. Connect the cables to server ports on the fabric interconnect ReadKnowledge the server.

Correct Answer: D

QUESTION 3

DRAG DROP Refer to the exhibit.



An administrator must complete the unified fabric configuration between Server1 and a pair of Cisco Nexus 9000 Series Switches.

Drag and drop the code snippets from the right onto the blanks in the code on the left to complete the N9K-1 configuration Snippets are used more than once.

Select and Place:

Answer area

```
service-policy type qos input default-fcoe-in-policy
int [ ]
  switchport trunk allowed [ ] 1, 100
int [ ]
bind interface [ ]
no shut
```

[vlan]
[vfc 1]
[po12]

Correct Answer:



Answer area

```
service-policy type qos input default-fcoe-in-policy
int pol2
  switchport trunk allowed vlan 1, 100
int vfc 1
  bind interface pol2
  no shut
```

vlan

vfc 1

pol2

The following example shows how to configure the VLAN on a physical Ethernet address, create virtual Fibre Channel interface 4, bind vfc 4 to the physical Ethernet interface, enable associated VLAN 200, and map VLAN 200 to VSAN 2:
switch# configure terminal switch(config)# interface ethernet 1/2

```
switch(config-if)# switchport mode trunk
```

```
switch(config-if)# switchport trunk allowed vlan 1,200
```

```
switch(config)# interface vfc 4
```

```
switch(config-if)# bind interface ethernet 1/2
```

```
switch(config-if)# exit
```

QUESTION 4

Refer to the exhibit.

```
NEXUS (config)# feature tacacs+
NEXUS (config)# tacacs-server timeout 5
NEXUS (config)# tacacs-server directed-request
NEXUS (config)# tacacs-server deadtime 0
NEXUS (config)# tacacs server host 10.1.50.20 port 49
NEXUS (config)# tacacs-server host 10.1.50.20 key 7 "Flwhg123" timeout 1
NEXUS (config)# aaa group server tacacs+ ISE
NEXUS (config-tacacs+)# server 10.1.50.20
NEXUS (config-tacacs+)# deadtime 10
NEXUS (config-tacacs+)# use-vrf management
NEXUS (config-tacacs+)# source-interface mgmt 0
NEXUS (config)# aaa authentication login default group ISE
```

What is the result of implementing this configuration?

- A. The TACACS+ server uses the type-6 encrypted format.
- B. The switch queries the TACACS+ server by using a clear text PAP login.



- C. The timeout value on the TACACS+ server is 10 seconds.
- D. The switch queries the TACACS+ server by using an encrypted text PAP login.

Correct Answer: D

tacacs-server key To configure a global TACACS+ shared secret key, use the tacacs-server key command. To remove a configured shared secret, use the no form of this command. tacacs-server key [0 | 7] shared-secret Syntax Description 7 (Optional) Configures a preshared key specified in encrypted text to authenticate communication between the TACACS+ client and server.

QUESTION 5

A host EDG Client wants to talk to a webserver in EPG Web. A contract with default settings is defined between EPG Client and EPG Web, which allows TCP communication initiated by the client toward the webserver with TCP destination port 80. Which statement is true?

- A. If EPG Web is made a preferred group member, a contract between EPG Client and EPG Web is no longer required for the host in EPG Client to reach the webserver in EPG Web.
- B. If vzAny is configured to consume and provide a "deny all" contract, traffic between EPG Client and EPG Web is no longer allowed.
- C. The host in EPG Client is allowed to connect to TCP destination port 80 on the webserver in EPG Web. The webserver will not be allowed to initiate a separate TCP connection to a host port with TCP source port 80.
- D. The host in EPG Client is allowed to connect to TCP destination port 80 on the webserver in EPG Web. The webserver is allowed to initiate a separate TCP connection to a host port with TCP source port 80.

Correct Answer: D

Apply Both Direction and Reverse Filter Port in the subject for the filter. These two options are by default enabled...This means that if the provider EPG initiates traffic toward the consumer EPG, the Cisco ACI fabric allows it for any destination ports if the source port is 80.

https://www.cisco.com/c/en/us/td/docs/switches/datacenter/aci/apic/sw/1-x/Operating_ACI/guide/b_Cisco_Operating_ACI/b_Cisco_Operating_ACI_chapter_01000.html

Reverse filter and apply in both directions is default. If a filter allows traffic from any consumer port to a provider port (e.g. 8888), if reverse port filtering is enabled and the contract is applied both directions (say for TCP traffic), either the consumer or the provider can initiate communication. The provider could open up a TCP socket to the consumer using port 8888, whether the provider or consumer sent traffic first.

https://www.cisco.com/c/en/us/td/docs/switches/datacenter/aci/apic/sw/1-x/Operating_ACI/guide/b_Cisco_Operating_ACI/b_Cisco_Operating_ACI_chapter_01000.html

[350-601 PDF Dumps](#)

[350-601 VCE Dumps](#)

[350-601 Braindumps](#)