



# 301B<sup>Q&As</sup>

BIG-IP Local Traffic Manager (LTM) Specialist: Maintain & Troubleshoot

## Pass F5 301B Exam with 100% Guarantee

Free Download Real Questions & Answers **PDF** and **VCE** file from:

<https://www.passapply.com/301b.html>

100% Passing Guarantee  
100% Money Back Assurance

Following Questions and Answers are all new published by F5 Official Exam Center

-  **Instant Download** After Purchase
-  **100% Money Back** Guarantee
-  **365 Days** Free Update
-  **800,000+** Satisfied Customers





### QUESTION 1

A web application requires the client to provide the destination server and service identification. Which HTTP header will supply this information?

- A. Host
- B. From
- C. Expect
- D. Connection

Correct Answer: A

---

### QUESTION 2

An HA pair of LTM devices configured in Active-Standby mode stops responding to traffic and causes an outage. The Active device becomes Standby, but the partner device stays in Standby mode instead of taking over as Active. A reboot and restart of the services brings the LTM device to Active mode for a short time, but then it goes into Standby mode again.

Which two configuration components caused this condition? (Choose two.)

- A. VLAN Fail-safe
- B. System Fail-safe
- C. Gateway Fail-safe
- D. Switch Board Failure
- E. Link down on Failover

Correct Answer: AC

---

### QUESTION 3

A web developer has created a custom HTTP call to a backend application. The HTTP headers being sent by the HTTP call are:

```
GET / HTTP/1.1 User-Agent: MyCustomApp (v1.0) Accept: text/html Cache-Control: no-cache Connection: keep-alive Cookie: somecookie=1
```

The backend server is responding with the following:

```
HTTP/1.1 400 Bad Request Date: Wed, 20 Jul 2012 17:22:41 GMT Connection: close
```

Why is the HTTP web server responding with a HTTP 400 Bad Request?

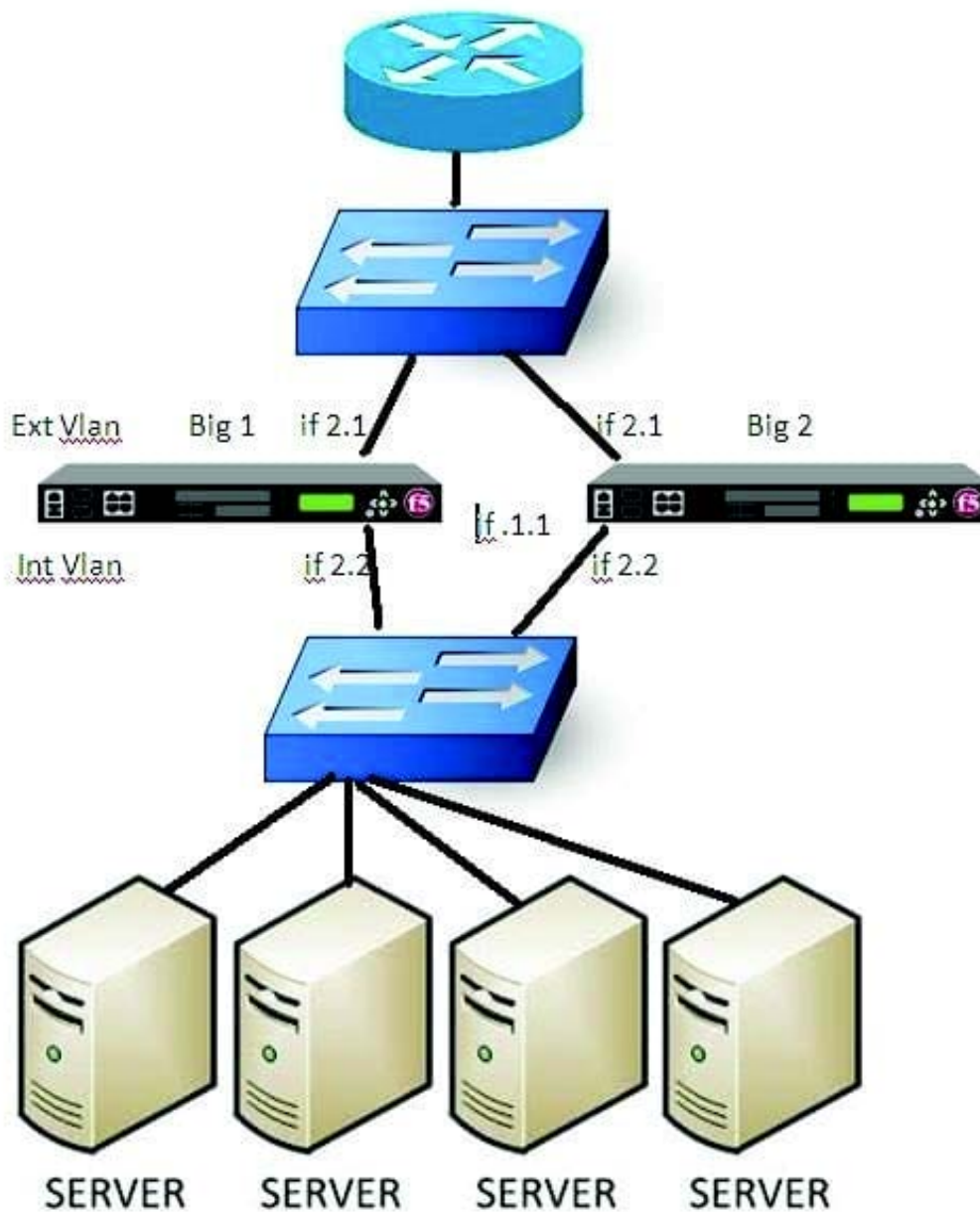


- A. The client request does NOT include a Host header.
- B. The User-Agent header contains an invalid character.
- C. The web server is NOT expecting a keep-alive connection.
- D. The web server is configured to accept HTTP 1.0 requests only.

Correct Answer: A

#### QUESTION 4

-- Exhibit





-- Exhibit -Refer to the exhibit.

A failover has just occurred on BIG-IP1. BIG-IP2 is now active and manages traffic as expected. Both Bigip's are set with a gateway failsafe to check the reachability of the main border router.

Switches have performed as expected.

Where should the LTM Specialist check for potential issues?

- A. Network Interface 2.1 of BIG-IP 2
- B. Network Interface 2.1 of BIG-IP 1
- C. Network Interface 2.2 of BIG-IP 2
- D. Network Interface 2.2 of BIG-IP 1
- E. Network Interface 1.1 of BIG-IP 1
- F. Network Interface 1.1 of BIG-IP 2

Correct Answer: B

---

#### QUESTION 5

In preparation for a maintenance task, an LTM Specialist performs a "Force to Standby" on LTM device Unit 1. LTM device Unit 2 becomes active as expected. The maintenance task requires the reboot of Unit 1. Shortly after the reboot is complete, the LTM Specialist discovers that Unit 1 has become active and Unit 2 has returned to standby.

What would cause this behavior?

- A. Unit 1 is set with the redundancy state preference of active in devices groups.
- B. Unit 1 is set with the redundancy state preference of active in high availability.
- C. A traffic group is configured with Auto Failback, and Unit 1 is the default device.
- D. A device group is configured with Auto Failback, and Unit 1 is the default device.

Correct Answer: C

[Latest 301B Dumps](#)

[301B PDF Dumps](#)

[301B Exam Questions](#)