



300-820^{Q&As}

Implementing Cisco Collaboration Cloud and Edge Solutions (CLCEI)

Pass Cisco 300-820 Exam with 100% Guarantee

Free Download Real Questions & Answers **PDF** and **VCE** file from:

<https://www.passapply.com/300-820.html>

100% Passing Guarantee
100% Money Back Assurance

Following Questions and Answers are all new published by Cisco
Official Exam Center

- ⚙ **Instant Download** After Purchase
- ⚙ **100% Money Back** Guarantee
- ⚙ **365 Days** Free Update
- ⚙ **800,000+** Satisfied Customers





QUESTION 1

For a Mobile and Remote Access deployment, which server's certificate must include the Unified registration domain as a Subject Alternate Name?

- A. Expressway-C server certificate
- B. Cisco Unified Communications Manager server certificate
- C. Expressway-E server certificate
- D. Expressway-C and Expressway-E server certificate

Correct Answer: C

QUESTION 2

Which complication does a NAT introduce in SDP for a SIP call?

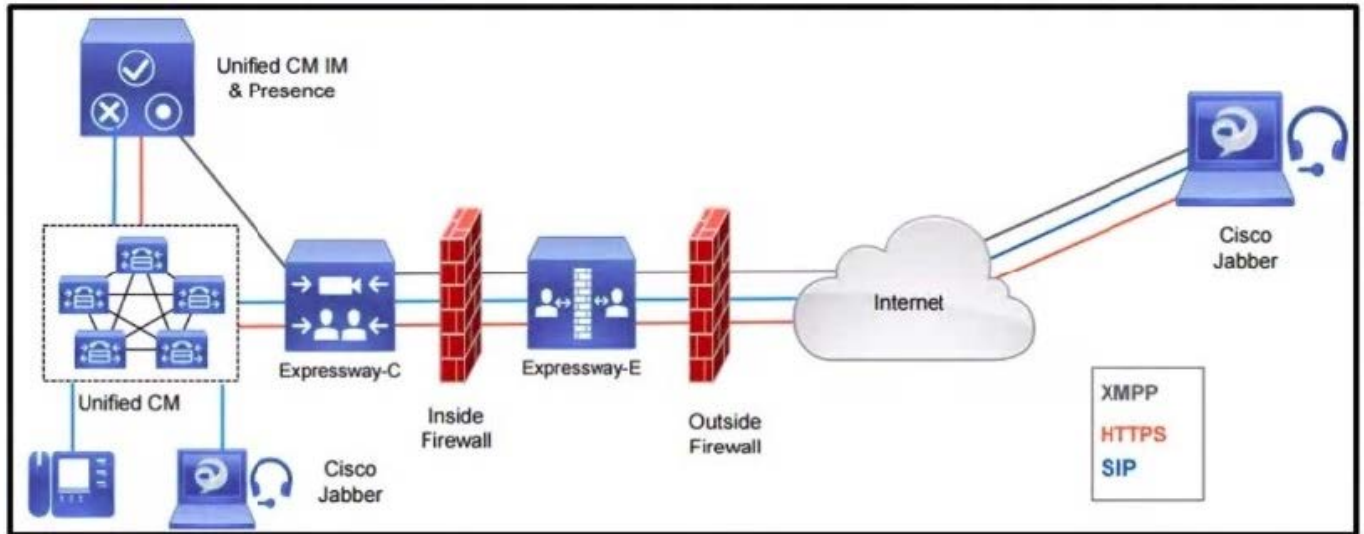
- A. Additional headers due to NAT encapsulation can cause the packet size to exceed the MTU.
- B. When the client is behind a NAT they may be unable to determine the appropriate offset due to time zones.
- C. The IP address specified in the connection data field may be an unrouteable internal address.
- D. The encryption keys advertised in the SDP are only valid for clients not behind a NAT.

Correct Answer: C

The problem is that if NAT enabled, some firewalls doesn't write the translated address into the SIP Signalling (fortinet for example has VIP feature that make it works).

QUESTION 3

Refer to the exhibit.



Which inbound connection should an administrator configure on the outside firewall?

- A. Media: UDP 36000 to 36011
- B. HTTPS (tunneled over SSH between C and E): TCP 2222
- C. SIP TCP 5061
- D. XMPP TCP 5222

Correct Answer: D

Based on following LINK and page 18(SIP Calls) + 29 (MRA Connections): https://www.cisco.com/c/dam/en/us/td/docs/voice_ip_comm/expressway/config_guide/X12-5/Cisco-Expressway-IP-Port-Usage-for-Firewall-Traversal-Deployment-Guide-X12-5.pdf

SIP UDP: 5060 SIP TCP: 5060 SIP TLS: 5061 XMPP TCP: 5222 RTP/RTCP: 36000-59999

QUESTION 4

A company is installing Cisco Collaboration infrastructure and one of the requirements is that they must be able to communicate with many external parties that are using H.323 and SIP. Internally they want to register the endpoints only on SIP.

Which functionality would describe the feature that needs to be enabled and where to achieve this?

- A. Interworking in Expressway-C
- B. Transcoding in Cisco Unified Communications Manager
- C. Transcoding in Expressway-C
- D. Interworking in Cisco Unified Communications Manager

Correct Answer: A



QUESTION 5

Which dial plan component is configured in Expressway-C to route a call to the Cisco UCM?

- A. call routing
- B. traversal subzone
- C. call policy
- D. search rule

Correct Answer: D

Reference: <https://cmslab.ciscolive.com/pod8/cucm/expctrunk>

[Latest 300-820 Dumps](#)

[300-820 Practice Test](#)

[300-820 Braindumps](#)