



300-820^{Q&As}

Implementing Cisco Collaboration Cloud and Edge Solutions (CLCEI)

Pass Cisco 300-820 Exam with 100% Guarantee

Free Download Real Questions & Answers **PDF** and **VCE** file from:

<https://www.passapply.com/300-820.html>

100% Passing Guarantee
100% Money Back Assurance

Following Questions and Answers are all new published by Cisco
Official Exam Center

-  **Instant Download** After Purchase
-  **100% Money Back** Guarantee
-  **365 Days** Free Update
-  **800,000+** Satisfied Customers





QUESTION 1

Refer to the exhibit.

```
XmppSDK.dll #0, 201, Recv:<iq id='uid:527a7fe7:00000cfe:00000000' type='error'><bind  
xmlns='urn:ietf:params:xml:ns:xmpp-stanzas' /></error></iq>  
  
XmppSDK.dll #0, CXmppClient::onResourceBindError  
  
XmppSDK.dll #0, 39, CTriClient::HandleDisconnect, reason:16
```

While troubleshooting Cisco Jabber login issues, there are some error messages. Why is the Jabber client unable to sign in?

- A. down Cisco Unified Communications Manager server
- B. XMPP bind failures
- C. incorrect login credentials
- D. service discovery issues

Correct Answer: B

QUESTION 2

An administrator configures a secure SIP trunk in Cisco UCM to Expressway-C. The SIP trunk fails to become active, and an examination of a packet capture finds that the TLS handshake failed with a "certificate Unknown" error from Cisco UCM. To allow the Cisco UCM to trust the Expressway-C and establish a TLS connection, the administrator will upload the Expressway server certificate to the trust store. To which trust store must the certificate be uploaded?

- A. tomcat-trust
- B. CallManager-trust
- C. TVS-trust
- D. ipsec-trust

Correct Answer: B

https://www.cisco.com/c/dam/en/us/td/docs/voice_ip_comm/expressway/config_guide/X8-1/Cisco-Expressway-SIP-Trunk-to-Unified-CM-Deployment-Guide-CUCM-8-9-and-X8-1.pdf

QUESTION 3

Refer to the exhibit.



Transforms												
Priority	State	Description	Pattern	Type	Behavior	Replace						
<input type="checkbox"/>	1	✓ Enabled	Strip Domain from all calls	(.*)@(.*)	Regex	Replace	\1					
<input type="checkbox"/>	2	✓ Enabled	add pod1.local domain to all requests	(.*)	Regex	Replace	\1@pod1.local					

Search rules											
Priority	Rule name	Protocol	Source	Mode	Pattern type	Pattern string	Pattern behavior	On match	Target	SIP variant	Enabled
1	Route all Calls to Local Zone	Any	Any	Any alias				Continue	LocalZone	Any	✓

Search history				
Search type	Source	Destination	SIP variant	Status
SIP (INVITE)	jabberuser@pod1.local	sip.endpointc@pod1.local	Standards-based	Not found
SIP (INVITE)	jabberuser@pod1.local	sip.endpointb@pod1.local	Standards-based	Not found
SIP (INVITE)	jabberuser@pod1.local	sip.endpointa@pod1.local	Standards-based	Not found

Calls to locally registered endpoints are failing. At present, there are two endpoints registered locally to this Expressway. An H.323 endpoint with an alias of "EndpointA" is registered, and a SIP endpoint with an alias of "EndpointB@pod1.local" is also registered.

How is this issue resolved?

- A. The dialplan must be redesigned to use the transforms to convert the alias into SIP URI format and then use separate search rules for each format that needs to be dialed within the local zone.
- B. The calls are failing because there are insufficient licenses. Additional licenses must be installed for the Expressway to route these calls.
- C. The current search rule does not match the call, so the search rule must be modified to include a SIP Variant of "Standards-Based".
- D. Calling parties are placing calls with the wrong domain. End-users must be instructed not to use the pod1.local domain as that is owned by the local system. Calls to any other domain would work.

Correct Answer: A

QUESTION 4

Which step is taken when configuring a Cisco Expressway solution?

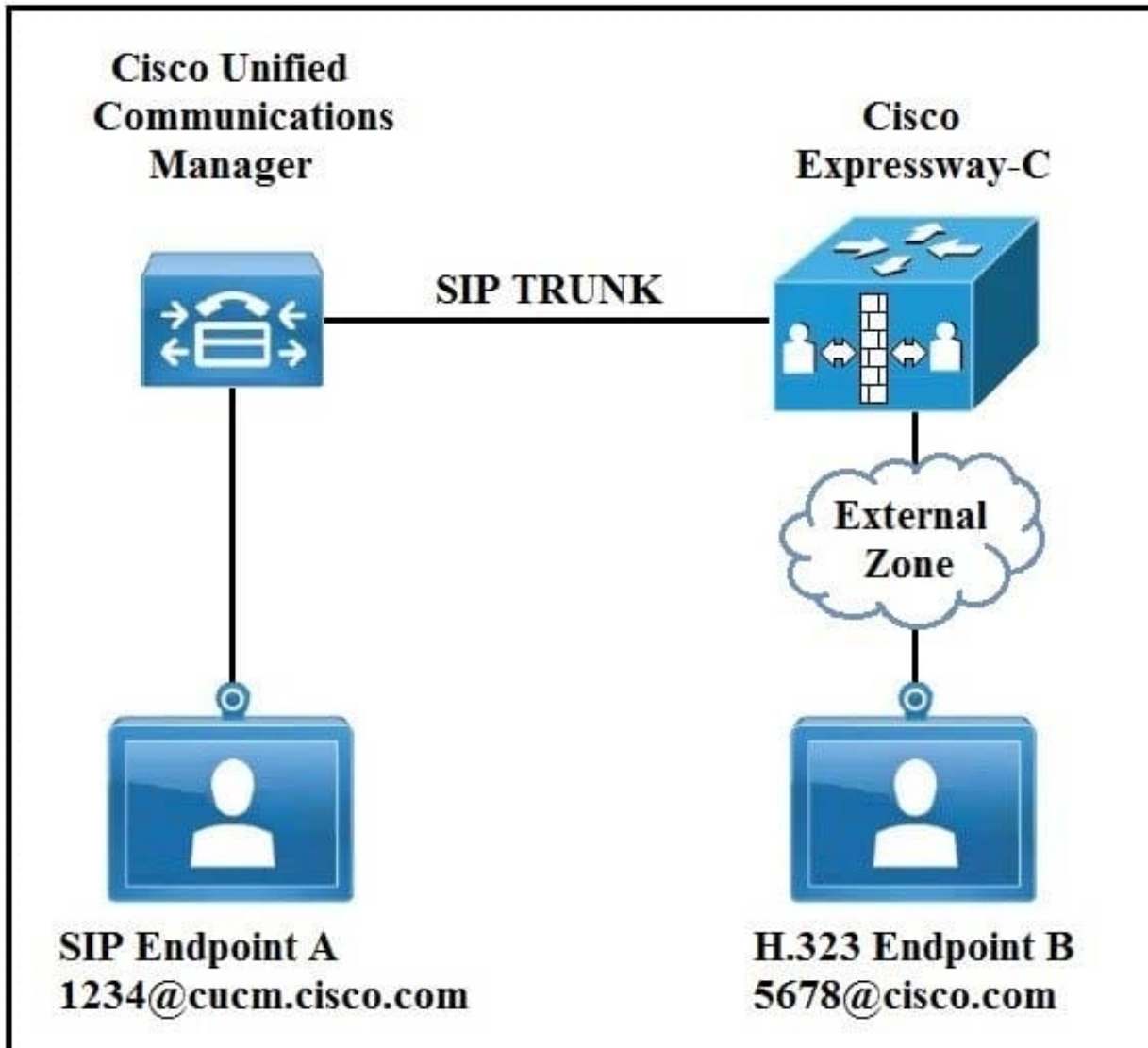
- A. Configure the Expressway-E by using a non-traversal server zone.
- B. Enable static NAT on the Expressway-E only.
- C. Disable H.323 mode on the Expressway-E.
- D. Enable H.323 H.460.19 demultiplexing mode on the Expressway-C.



Correct Answer: B

QUESTION 5

Refer to the exhibit.



In an environment SIP devices are registered to CUCM and H.323 devices to VCS. What would be required to enable these calls to setup correctly?

- A. Create a presearch transform.
- B. Change the domain of SIP endpoint A to cisco.com.
- C. Disable SIP in the external zone.
- D. Change the interworking mode to On.

Correct Answer: D



VCE & PDF

PassApply.com

<https://www.passapply.com/300-820.html>

2024 Latest passapply 300-820 PDF and VCE dumps Download

[Latest 300-820 Dumps](#)

[300-820 PDF Dumps](#)

[300-820 Practice Test](#)