



# 300-630<sup>Q&As</sup>

Implementing Cisco Application Centric Infrastructure - Advanced  
(DCACIA)

## Pass Cisco 300-630 Exam with 100% Guarantee

Free Download Real Questions & Answers **PDF** and **VCE** file from:

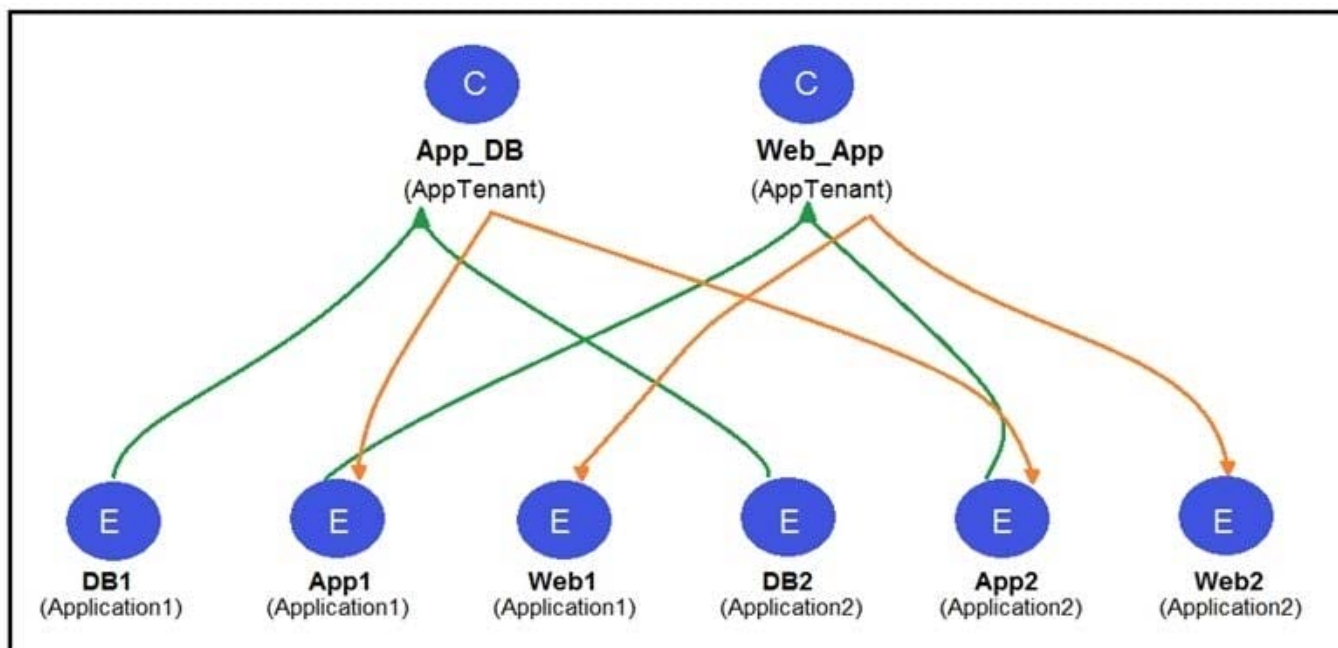
<https://www.passapply.com/300-630.html>

100% Passing Guarantee  
100% Money Back Assurance

Following Questions and Answers are all new published by Cisco  
Official Exam Center

- ⚙ **Instant Download** After Purchase
- ⚙ **100% Money Back** Guarantee
- ⚙ **365 Days** Free Update
- ⚙ **800,000+** Satisfied Customers



**QUESTION 1**

Refer to the exhibit. Two application profiles are configured in the same tenant and different VRFs. Which contract scope is configured to allow communication between the two application profiles?

- A. global
- B. VRF
- C. application
- D. tenant

Correct Answer: D

Reference: [https://www.cisco.com/c/en/us/td/docs/switches/datacenter/aci/apic/sw/1-x/Operating\\_ACI/guide/b\\_Cisco\\_Operating\\_ACI/b\\_Cisco\\_Operating\\_ACI\\_chapter\\_01000.html](https://www.cisco.com/c/en/us/td/docs/switches/datacenter/aci/apic/sw/1-x/Operating_ACI/guide/b_Cisco_Operating_ACI/b_Cisco_Operating_ACI_chapter_01000.html)

**QUESTION 2**

How is broadcast forwarded in Cisco ACI Multi-Pod after ARP flooding is enabled?

- A. For the specific bridge domain, all spines forward the broadcast frames to IPN routers
- B. Broadcast frames are forwarded inside the pod and across the IPN using the multicast address that is associated to the bridge domain
- C. Within a pod, the ingress leaf switch floods the broadcast frame on all fabric ports
- D. Ingress replication is used on the spines to forward broadcast frames in the IPN infrastructure



Correct Answer: A

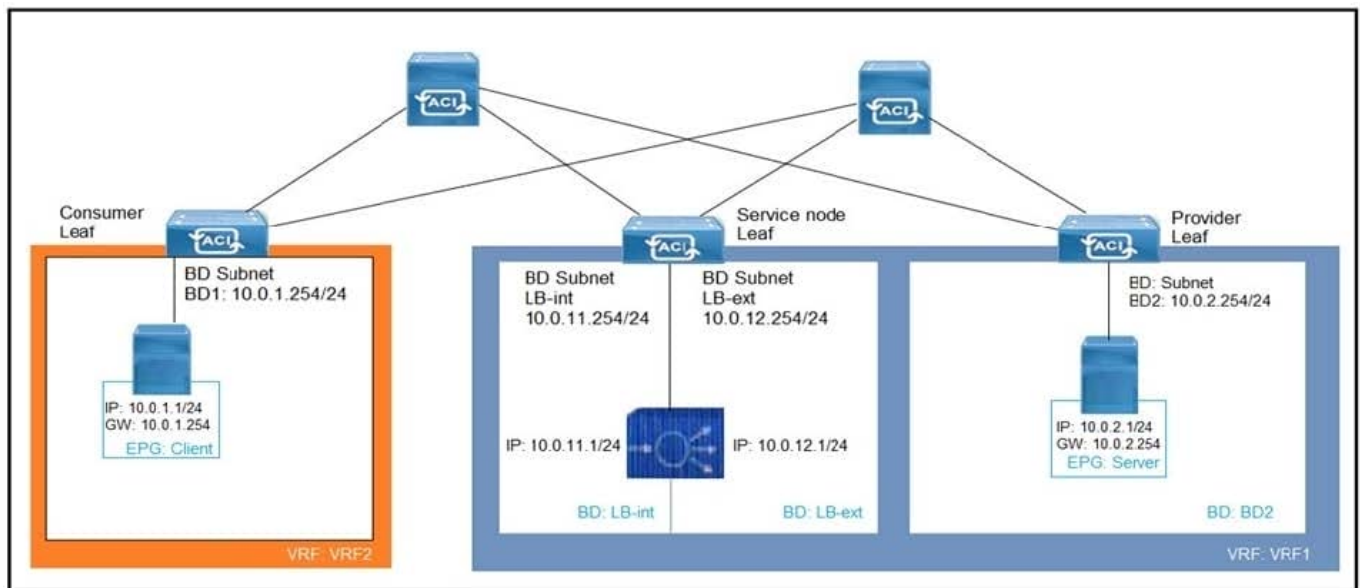
### QUESTION 3

An engineer configures a Cisco ACI Multi-Pod for disaster recovery. Which action should be taken for the new nodes to be discoverable by the existing Cisco APICs?

- A. Enable subinterfaces with dot1q tagging on all links between the IPN routers.
- B. Configure IGMPv3 on the interfaces of IPN routers that face the Cisco ACI spine.
- C. Enable DHCP relay on all links that are connected to Cisco ACI spines on IPN devices.
- D. Configure BGP as the underlay protocol in IPN.

Correct Answer: B

### QUESTION 4



Refer to the exhibit. What must be configured to allow the PBR node (LB-int) to monitor the availability of the endpoint that is in the EPG server?

- A. Endpoint Dataplane Learning
- B. Unicast Route disabled for client and server bridge domains
- C. PBR node tracking
- D. Direct Connect in the service graph template

Correct Answer: A



#### QUESTION 5

Which feature should be disabled on a bridge domain when a default gateway for endpoints is on an external device instead of a Cisco ACI bridge domain SVI?

- A. unicast routing
- B. ARP flooding
- C. unknown unicast flooding
- D. proxy ARP

Correct Answer: C

[300-630 PDF Dumps](#)

[300-630 VCE Dumps](#)

[300-630 Study Guide](#)