



# 300-630<sup>Q&As</sup>

Implementing Cisco Application Centric Infrastructure - Advanced  
(DCACIA)

## Pass Cisco 300-630 Exam with 100% Guarantee

Free Download Real Questions & Answers **PDF** and **VCE** file from:

<https://www.passapply.com/300-630.html>

100% Passing Guarantee  
100% Money Back Assurance

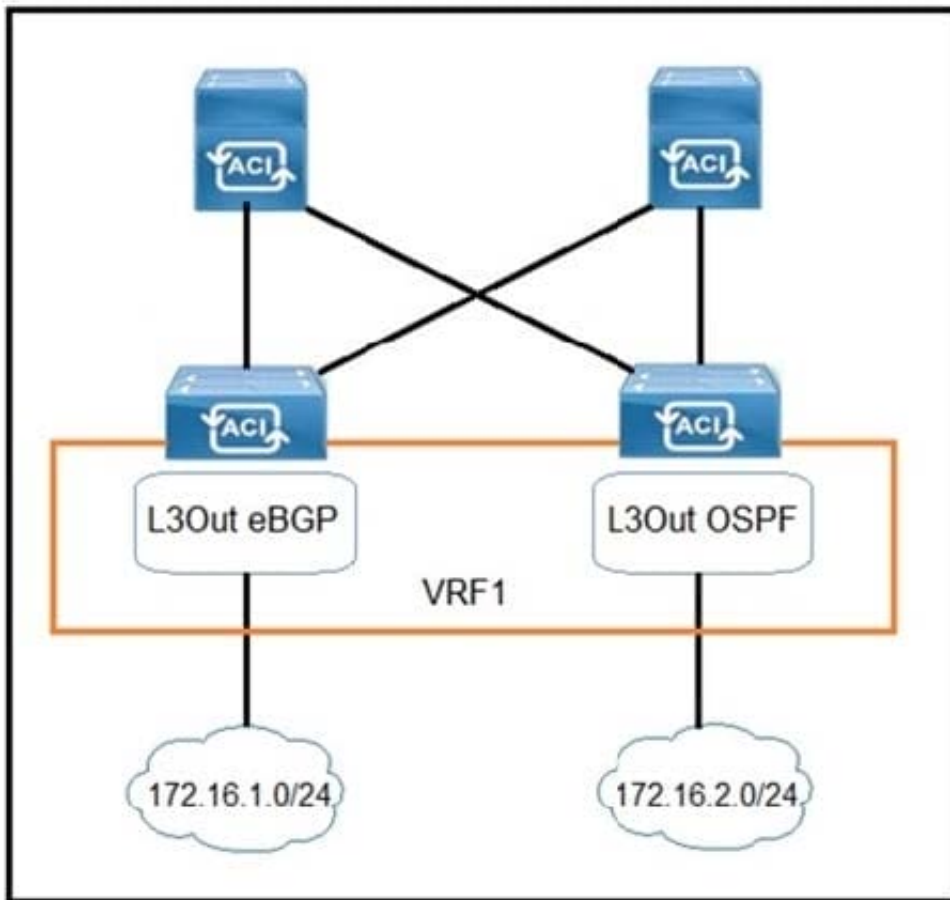
Following Questions and Answers are all new published by Cisco  
Official Exam Center

- ⚙️ **Instant Download** After Purchase
- ⚙️ **100% Money Back** Guarantee
- ⚙️ **365 Days** Free Update
- ⚙️ **800,000+** Satisfied Customers





QUESTION 1



Refer to the exhibit. Which configuration must be implemented on L3Out EBGP to advertise out of the fabric 172.16.2.0/24 network that is learned from L3Out OSPF?



A.

**Create Subnet****Specify the Subnet**

IP Address: 172.16.2.0/24

address/mask

scope: ☒ Export Route Control Subnet☐ Import Route Control Subnet☐ External Subnets for the External EPG☐ Shared Route Control Subnet☐ Shared Security Import Subnet

B.

**Create Subnet****Specify the Subnet**

IP Address: 172.16.1.0/24

address/mask

scope: ☒ Export Route Control Subnet☐ Import Route Control Subnet☐ External Subnets for the External EPG☐ Shared Route Control Subnet☐ Shared Security Import Subnet



C.

**Create Subnet**  
**Specify the Subnet**

IP Address:   
address/mask

scope: ☐ Export Route Control Subnet  
☐ Import Route Control Subnet  
☒ External Subnets for the External EPG  
☐ Shared Route Control Subnet  
☐ Shared Security Import Subnet

D.

**Create Subnet**  
**Specify the Subnet**

IP Address:   
address/mask

scope: ☐ Export Route Control Subnet  
☐ Import Route Control Subnet  
☒ External Subnets for the External EPG  
☐ Shared Route Control Subnet  
☐ Shared Security Import Subnet

A. Option A

B. Option B

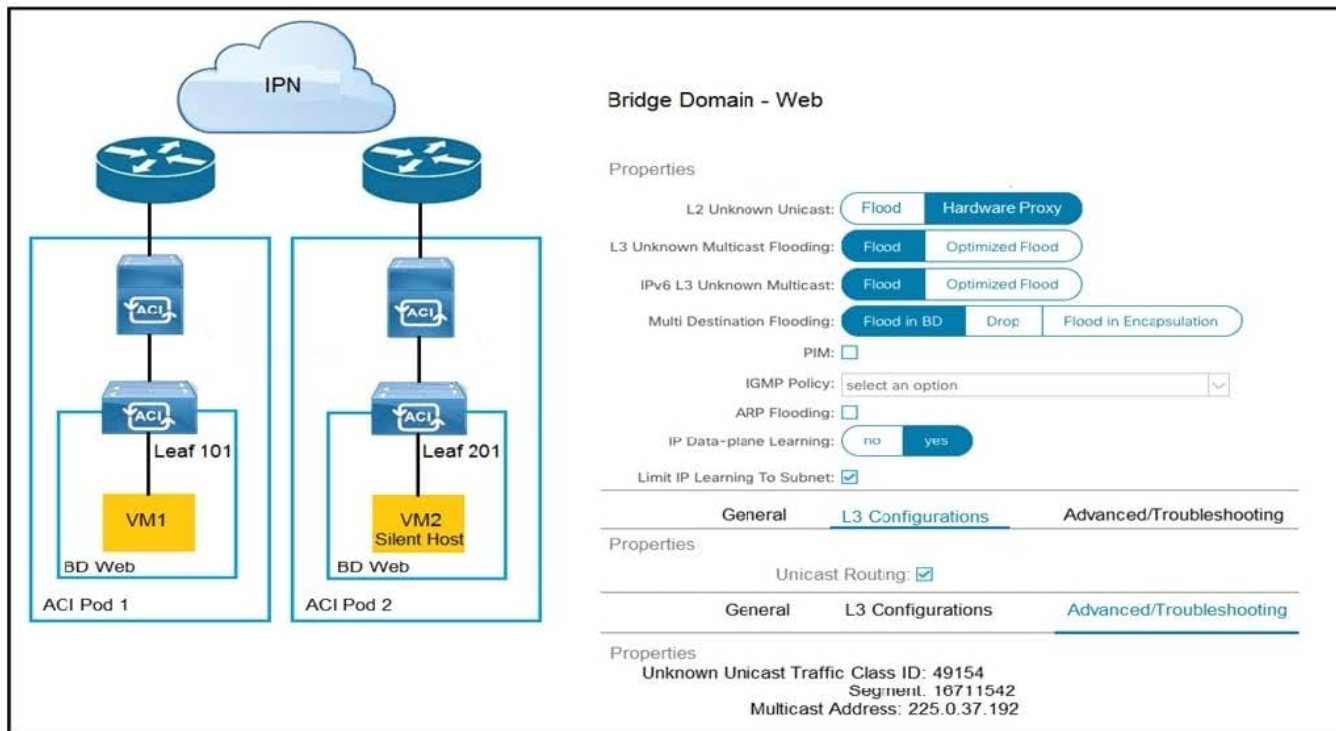
C. Option C

D. Option D

Correct Answer: A

---

**QUESTION 2**



Refer to the exhibit. How is the ARP request from VM1 forwarded when VM2 is not learned in the Cisco ACI fabric?

- A. Leaf 101 forwards the ARP request to one of the proxy VTEP spines.
- B. POD1 spine responds to the ARP request after the POD1 COOP is updated with the VM2 location.
- C. Leaf 101 encapsulates the ARP request into a multicast packet that is destined to 225.0.37.192.
- D. Leaf 101 switch consumes the ARP reply of VM2 to update the local endpoint table.

Correct Answer: A

### QUESTION 3

An engineer configures a new Cisco ACI Multi-Pod setup. Which action should be taken for fabric discovery to be successful for the nodes in Pod 2?

- A. Select the Route Reflector field in Pod Peering
- B. Enable the DSCP class-cos translation policy for Layer 3 traffic
- C. Configure POD 2 Data Plane TEP under the Pod Connection Profile
- D. Add the IPN subnet under the Fabric External Routing Profile

Correct Answer: D

### QUESTION 4



How is broadcast forwarded in Cisco ACI Multi-Pod after ARP flooding is enabled?

- A. For the specific bridge domain, all spines forward the broadcast frames to IPN routers
- B. Broadcast frames are forwarded inside the pod and across the IPN using the multicast address that is associated to the bridge domain
- C. Within a pod, the ingress leaf switch floods the broadcast frame on all fabric ports
- D. Ingress replication is used on the spines to forward broadcast frames in the IPN infrastructure

Correct Answer: A

---

#### QUESTION 5



Refer to the exhibit. Which combination of flags in the Cisco ACI contract allows a client in WebClient EPG to establish an HTTP connection toward a server in WebServer EPG?

- A. Apply Both Direction ENABLED and Reverse Port Filter ENABLED
- B. Apply Both Direction DISABLED and Reverse Port Filter DISABLED
- C. Apply Both Direction DISABLED and Reverse Port Filter ENABLED
- D. Apply Both Direction ENABLED and Reverse Port Filter DISABLED

Correct Answer: C

[Latest 300-630 Dumps](#)

[300-630 VCE Dumps](#)

[300-630 Study Guide](#)