



300-620^{Q&As}

Implementing Cisco Application Centric Infrastructure (DCACI)

Pass Cisco 300-620 Exam with 100% Guarantee

Free Download Real Questions & Answers **PDF** and **VCE** file from:

<https://www.passapply.com/300-620.html>

100% Passing Guarantee
100% Money Back Assurance

Following Questions and Answers are all new published by Cisco
Official Exam Center

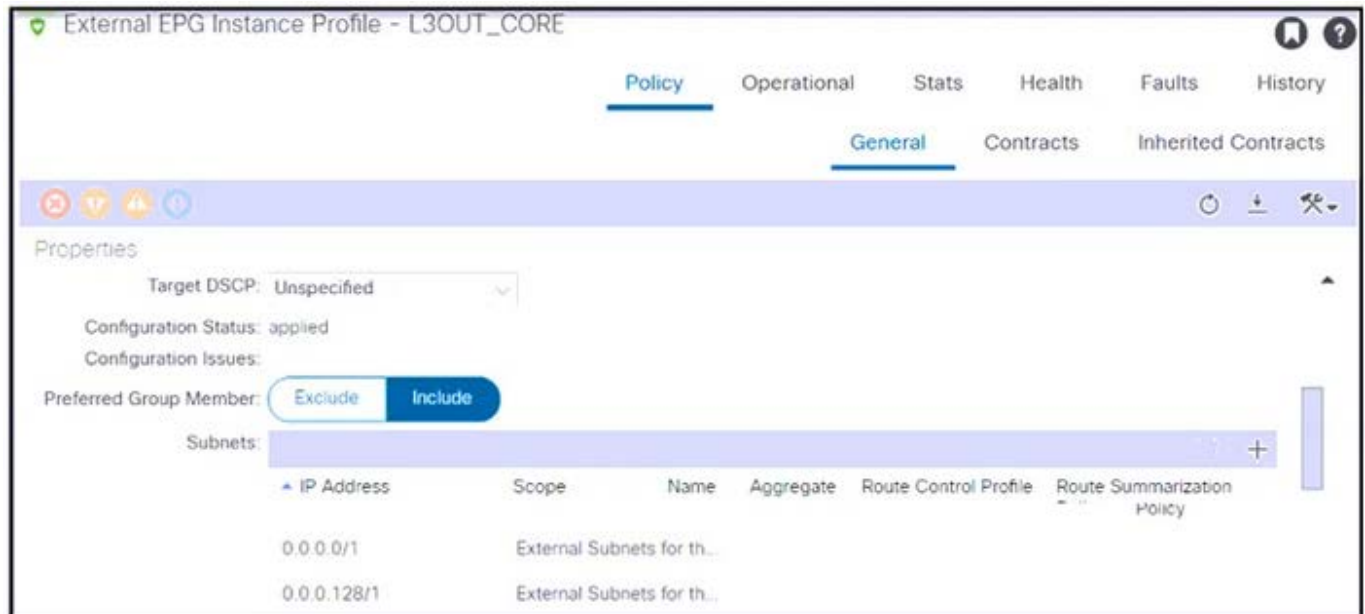
- ⚙️ **Instant Download** After Purchase
- ⚙️ **100% Money Back** Guarantee
- ⚙️ **365 Days** Free Update
- ⚙️ **800,000+** Satisfied Customers





QUESTION 1

Refer to the exhibit.



An engineer configured subnets on the external EPG called L3OUT_CORE. The external endpoints in the 10.1.0.0/24 subnet can reach internal endpoints, but the external endpoints in the 172.16.1.0/24 subnet are unreachable. Which set of actions enables the connectivity?

- A. Delete both external EPG subnets. Create the 0.0.0.0/1 subnet.
- B. Delete the external EPG subnet 0.0.0.128/1. Create the 128.0.0.0/1 subnet.
- C. Delete both external EPG subnets. Create the 0.0.0.0/0 subnet.
- D. Delete the external EPG subnet 0.0.0.0/0. Create the 0.0.0.0/128 subnet.

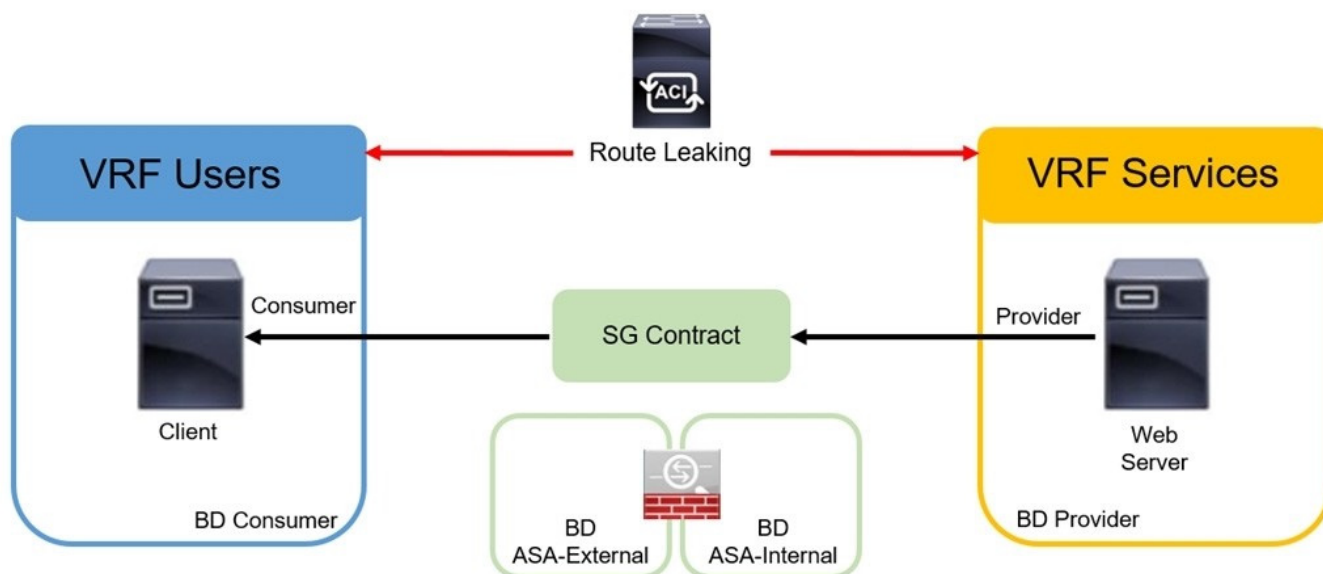
Correct Answer: B

The 0.0.0.0/0 matches every IP address, whereas 0.0.0.0/1 only matches half of them (0.0.0.0-127.255.255.255) and requires 128.0.0.0/1 as its pair to match the rest (128.0.0.0-255.255.255.255).

<https://serverfault.com/questions/1100250/what-is-the-difference-between-0-0-0-0-0-and-0-0-0-0-1>

QUESTION 2

Refer to the exhibit.



An engineer must implement the inter-tenant service graph. Which set of actions must be taken to accomplish this goal?

- A. Define the contract in the provider tenant and export it to the consumer tenant. Define the L4-L7 device, service graph template, and ASA bridge domains in the provider tenant.
- B. Define the contract in the provider tenant and export it to the consumer tenant. Define the L4-L7 device and service graph template in the provider tenant and the ASA bridge domains in the consumer tenant.
- C. Define the contract in the provider tenant and export it to the provider tenant. Define the L4-L7 device and service graph template in the provider tenant and the ASA bridge domains in the consumer tenant.
- D. Define the contract in the provider tenant and export it to the provider tenant. Define the L4-L7 device, service graph template, and ASA bridge domains in the consumer tenant.

Correct Answer: B

QUESTION 3

Which feature dynamically assigns or modifies the EPG association of virtual machines based on their attributes?

- A. vAny contracts
- B. standard contracts
- C. application EPGs
- D. uSeg EPGs

Correct Answer: D

Microsegmented EPGs (uSeg) works based on attribute.



QUESTION 4

An engineer must implement user activity tracking in the Cisco ACI with a solution that meets these requirements:

1.

All user activity that is related to the Cisco ACI infrastructure hardware must be tracked.

2.

All audit logs with severity level 5 and below must be collected and exported.

3.

Logs must be exported to a Security Information and Event Management (SIEM) appliance.

Which set of steps must be taken?

A. Create a Syslog Monitoring Destination Group with a remote destination of the SIEM device. Create a Tenant-level Syslog Source under the Monitoring section of the Tenant Tab. Select Audit Logs and a severity level of Warning,

B. Create a Syslog Monitoring Destination Group with a Local File destination. Create an Access-level Syslog Source under the Monitoring section of the Fabric Tab. Select Fault Logs and a severity level of Notification.

C. Create a Syslog Monitoring Destination Group with a remote destination of the SIEM device. Create a Fabric-level Syslog Source under the Monitoring section of the Fabric Tab. Select Audit Logs and a severity level of Notification.

D. Create a Syslog Monitoring Destination Group with Console Destination. Create a System-level Syslog Source under the Monitoring section of the System Tab. Select Session Logs and a severity level of Warning.

Correct Answer: C

Fabric > Fabric > Policies > Monitoring > default > Callhome/Smart Callhome/SNMP/Syslog/TACACs

uni/fabric/monfab-default

Create Syslog Source

Provide a name for this source (i.e., FabricDefaultSyslog)

Select the Minimum Syslog Severity Level (default is warning; we have changed this to information)

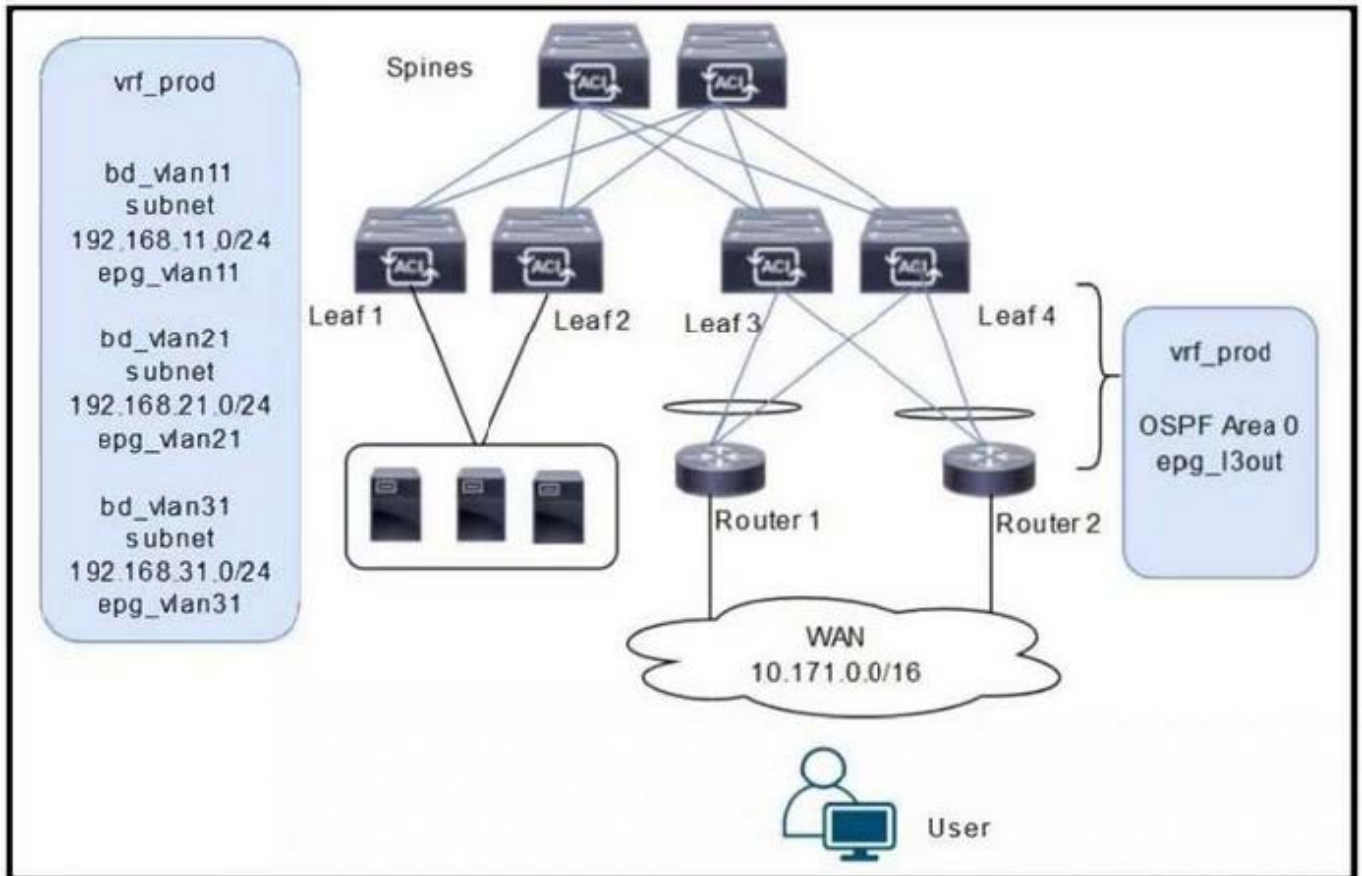
Select the categories of messages to source (default is faults; we have selected all categories)

Select the Destination Syslog Server (this is the server we previously defined)

<https://unofficialaciguide.com/2018/08/11/configuring-syslog-for-aci/>

QUESTION 5

Refer to the exhibit.



A customer is deploying a WAN with these requirements:

1.

Routers 1 and 2 must receive only routes 192.168.11.0/24 and 192.168.21.0/24 from the Cisco ACI fabric.

2.

Reachability to the WAN users must be permitted only for the servers that are located in vrf_prod.

Which settings must be configured to meet these objectives?

- A. Configure the subnets 192.168.11.0/24 and 192.168.21.0/24 as Private to VRF. Configure the subnet 192.168.31.0/24 as Advertised Externally. Configure an EPG subnet 0.0.0.0/0 as Shared Route Control Subnet.
- B. Configure the subnets 192.168.11.0/24 and 192.168.21.0/24 as Private to VRF. Configure the subnet 192.168.31.0/24 as Advertised Externally. Configure an EPG subnet 0.0.0.0/0 as External Subnets for External EPG.
- C. Configure the subnets 192.168.11.0/24 and 192.168.21.0/24 as Advertised Externally. Configure the subnet 192.168.31.0/24 as Private to VRF. Configure an EPG subnet 0.0.0.0/0 as External Subnets for External EPG.
- D. Configure the subnets 192.168.11.0/24 and 192.168.21.0/24 as Advertised Externally. Configure the subnet 192.168.31.0/24 as Private to VRF. Configure an EPG subnet 0.0.0.0/0 as Shared Route Control Subnet.

Correct Answer: C



VCE & PDF

PassApply.com

<https://www.passapply.com/300-620.html>

2024 Latest passapply 300-620 PDF and VCE dumps Download

[300-620 VCE Dumps](#)

[300-620 Practice Test](#)

[300-620 Braindumps](#)