



300-515^{Q&As}

Implementing Cisco Service Provider VPN Services (SVPI)

Pass Cisco 300-515 Exam with 100% Guarantee

Free Download Real Questions & Answers **PDF** and **VCE** file from:

<https://www.passapply.com/300-515.html>

100% Passing Guarantee
100% Money Back Assurance

Following Questions and Answers are all new published by Cisco
Official Exam Center

- ⚙ **Instant Download** After Purchase
- ⚙ **100% Money Back** Guarantee
- ⚙ **365 Days** Free Update
- ⚙ **800,000+** Satisfied Customers



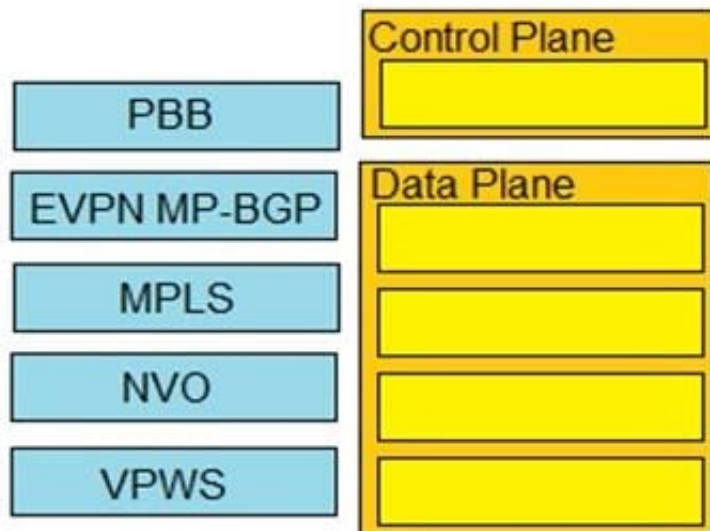


QUESTION 1

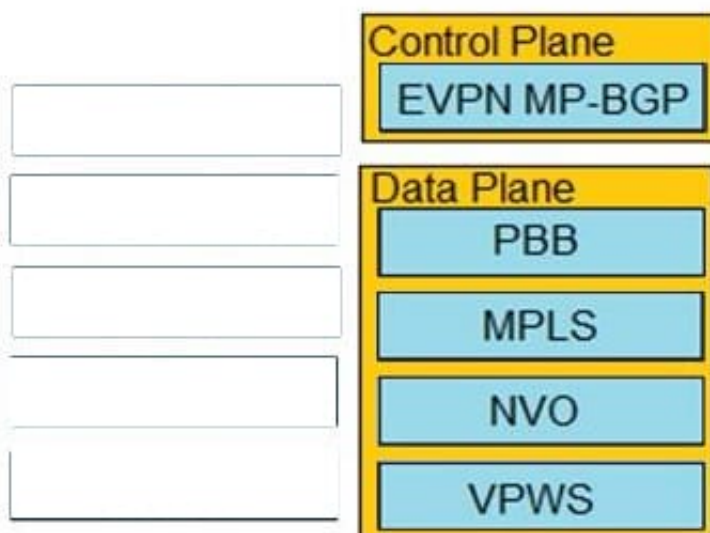
DRAG DROP

Drag and drop the EVPN components from the left onto the correct planes on the right.

Select and Place:



Correct Answer:



Reference: https://www.cisco.com/c/dam/m/en_us/network-intelligence/service-provider/digital-transformation/knowledge-network-webinars/pdfs/0420-eqn-ckn.pdf slide 8

QUESTION 2

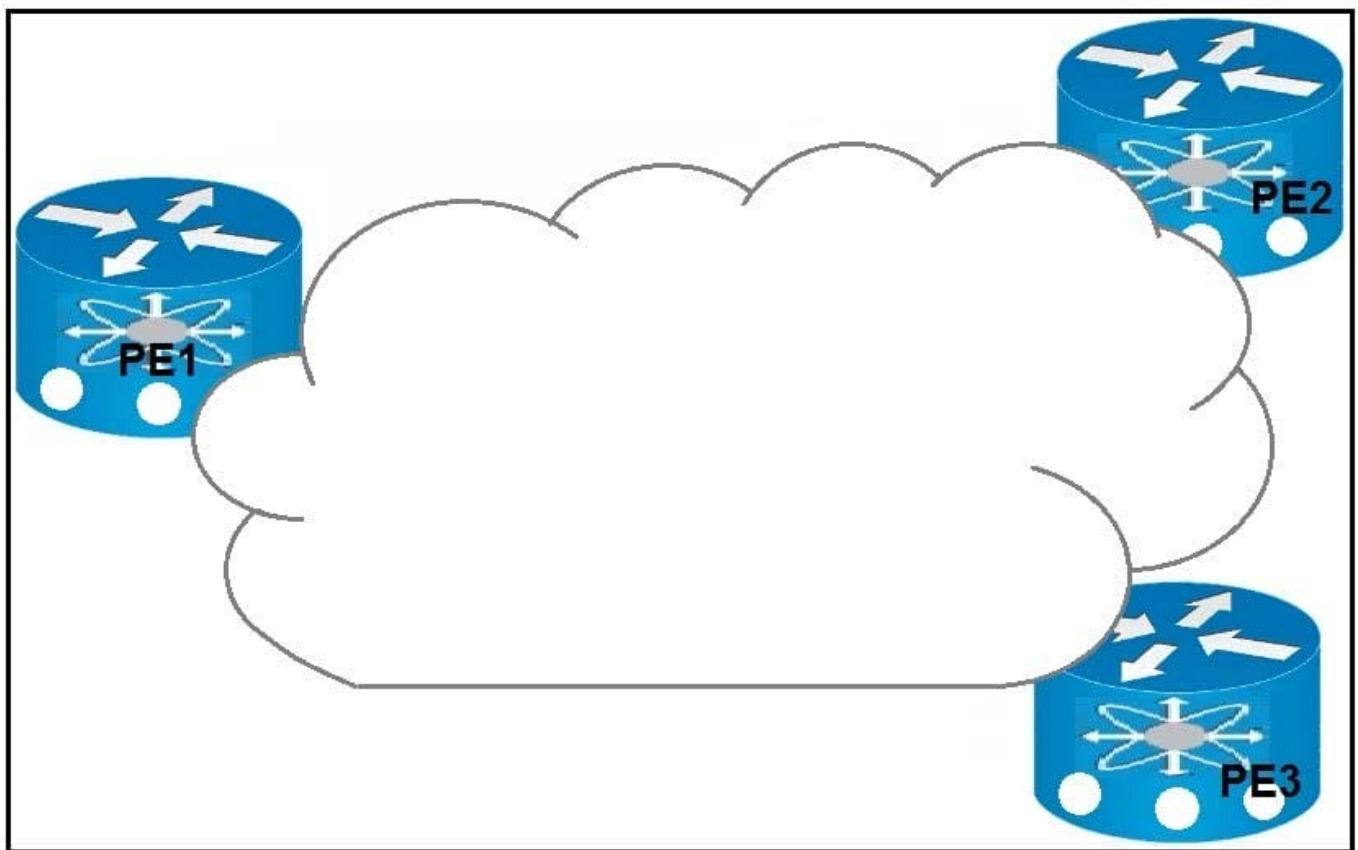


How do Ethernet virtual circuits provide a way for service providers to maximize the use of VLAN tags\\'-1

- A. They add an additional tag to VLANs that allows up to two switch ports to use the same globally configured VLAN ID.
- B. They redefine the VLAN tag to include classification, forwarding, and QoS using MPLS labels and EXP bits
- C. They separate the classification and forwarding concepts for VLAN tagging which allows multiple switch ports to use the same VLAN ID without it being configured globally.
- D. They assign VLAN IDs to VTP domains so that the same VLAN ID are used more than once globally.

Correct Answer: C

QUESTION 3



Refer to the exhibit. Which result occurs when PE1 learns a new MAC address and all three PEs are enabled with EVPN native?

- A. A system notification is sent to the network administrator that triggers the manual configuration of the new MAC address on PE2 and PE3.
- B. The new MAC address is sent by BGP to PE2 and PE3 as a Type 2 BGP route.
- C. The MAC address is entered into the CAM table and is classified for use on the native VLAN
- D. The MAC address is entered into the CAM table only if it is learned on the native VLAN.



Correct Answer: B

Reference: https://www.cisco.com/c/en/us/td/docs/routers/asr9000/software/asr9k-r6-4/lxvpn/configuration/guide/b-l2vpn-cg-asr9000-64x/b-l2vpn-cg-asr9000-64x_chapter_01011.html

QUESTION 4

mdt default mpls mldp 2.2.2.2

Refer to the exhibit. Which statement about this command is true?

- A. It must be configured on each PE router to enable the PE routers to receive multicast traffic for this particular MVRP.
- B. It is used to set the designated router on a link using PIM-SM.
- C. It must be configured on the PE and CE router to enable MP-BGP to send labels for CSC.
- D. It is used to set the router that will server as the root bridge for STP.

Correct Answer: A

Reference: <https://www.cisco.com/c/en/us/td/docs/routers/asr1000/configuration/guide/chassis/asrswcfg/lsmmldp.html>

QUESTION 5

In a typical service provider environment, which two tools are used to help scale PE router connectivity requirements? (Choose two.)

- A. route reflectors
- B. VPNv4 address family
- C. originator ID
- D. cluster ID
- E. confederations

Correct Answer: AE

[300-515 VCE Dumps](#)

[300-515 Exam Questions](#)

[300-515 Braindumps](#)