



# 300-515<sup>Q&As</sup>

Implementing Cisco Service Provider VPN Services (SVPI)

## Pass Cisco 300-515 Exam with 100% Guarantee

Free Download Real Questions & Answers **PDF** and **VCE** file from:

<https://www.passapply.com/300-515.html>

100% Passing Guarantee  
100% Money Back Assurance

Following Questions and Answers are all new published by Cisco  
Official Exam Center

- ⚙️ **Instant Download** After Purchase
- ⚙️ **100% Money Back** Guarantee
- ⚙️ **365 Days** Free Update
- ⚙️ **800,000+** Satisfied Customers





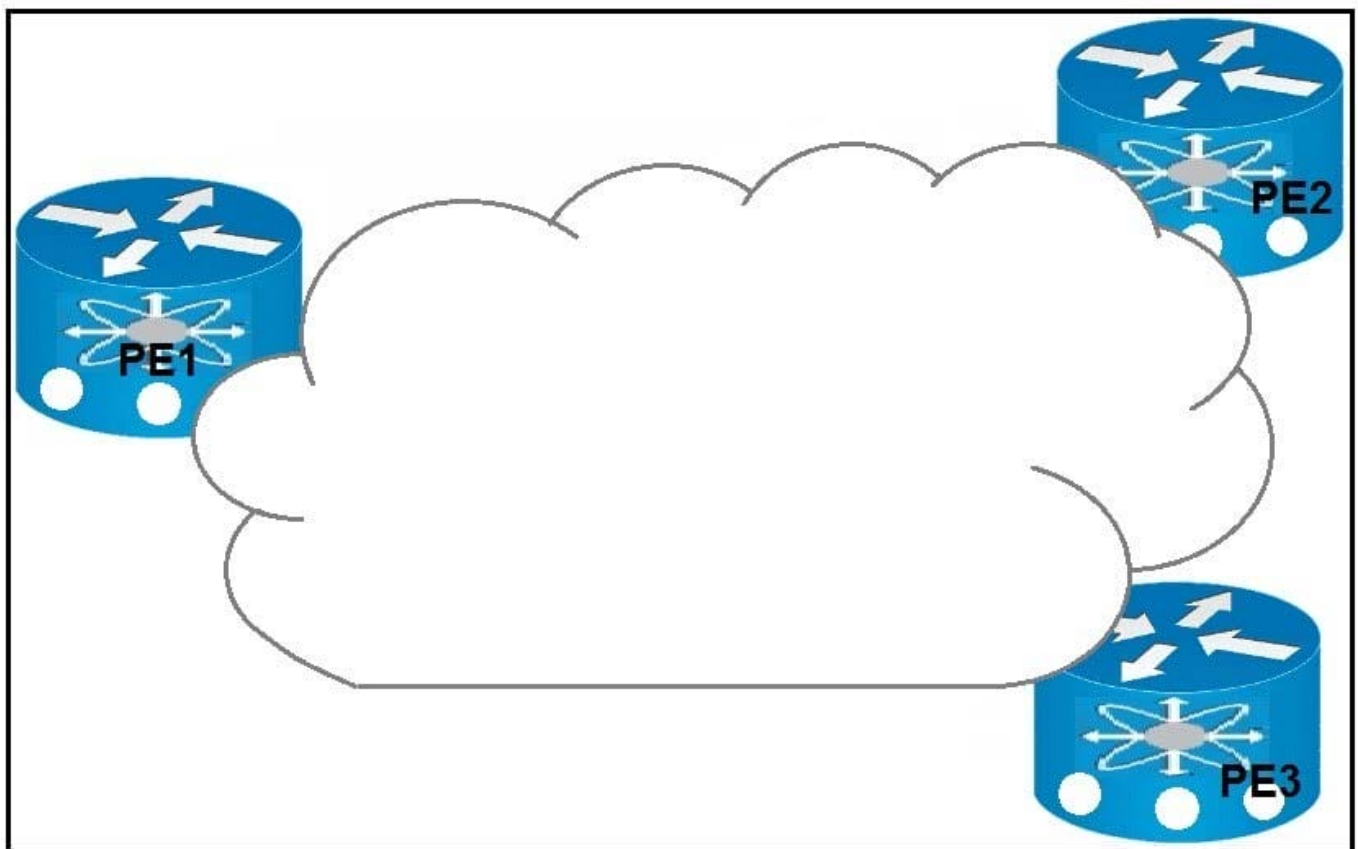
### QUESTION 1

What do routers on the network use to avoid routing loops when OSPF is running as the PE-CE routing protocol on a service provider network?

- A. the AS-Override feature
- B. the DN bit with type 3, 5, or 7 LSA
- C. the domain tag for type 2 LSA
- D. sham links to create a super backbone over the service provider network

Correct Answer: B

### QUESTION 2



Refer to the exhibit. Which result occurs when PE1 learns a new MAC address and all three PEs are enabled with EVPN native?

- A. A system notification is sent to the network administrator that triggers the manual configuration of the new MAC address on PE2 and PE3.
- B. The new MAC address is sent by BGP to PE2 and PE3 as a Type 2 BGP route.



- C. The MAC address is entered into the CAM table and is classified for use on the native VLAN
- D. The MAC address is entered into the CAM table only if it is learned on the native VLAN.

Correct Answer: B

Reference: [https://www.cisco.com/c/en/us/td/docs/routers/asr9000/software/asr9k-r6-4/lxvpn/configuration/guide/b-l2vpn-cg-asr9000-64x/b-l2vpn-cg-asr9000-64x\\_chapter\\_01011.html](https://www.cisco.com/c/en/us/td/docs/routers/asr9000/software/asr9k-r6-4/lxvpn/configuration/guide/b-l2vpn-cg-asr9000-64x/b-l2vpn-cg-asr9000-64x_chapter_01011.html)

---

### QUESTION 3

An engineer is investigating an EVPN traffic flow issue. Which type of traffic should the engineer allow in an EVPN Tree Service in order to fix this issue?

- A. known unicast from a leaf to another leaf
- B. unknown unicast from a leaf to another leaf
- C. multicast from a leaf to another leaf
- D. known unicast from a root to another root

Correct Answer: D

Reference: <https://tools.ietf.org/html/draft-ietf-bess-evpn-etree-14>

---

### QUESTION 4

Which two are characteristics of using a non-MPLS peer-to-peer model over a traditional overlay model? (Choose two.)

- A. The model is suited for nonredundant configurations.
- B. The configuration on a newly added site PE is updated automatically.
- C. Provider routers know the customer network topology.
- D. The customer specifies the exact site-to-site traffic profile.
- E. Routing information is exchanged between the customer router and one or a few PEs.

Correct Answer: CE

Reference: <http://etutorials.org/Networking/MPLS+VPN+Architectures/Part+2+MPLS-based+Virtual+Private+Networks/Chapter+7.+Virtual+Private+Network+VPN+Implementation+Options/Overlay+and+Peer-to-peer+VPN+Model/>

---

### QUESTION 5

```
mdt default mpls mldp 2.2.2.2
```



Refer to the exhibit. Which statement about this command is true?

- A. It must be configured on each PE router to enable the PE routers to receive multicast traffic for this particular MVRF.
- B. It is used to set the designated router on a link using PIM-SM.
- C. It must be configured on the PE and CE router to enable MP-BGP to send labels for CSC.
- D. It is used to set the router that will server as the root bridge for STP.

Correct Answer: A

Reference: <https://www.cisco.com/c/en/us/td/docs/routers/asr1000/configuration/guide/chassis/asrswcfg/lsmmlldp.html>

[300-515 VCE Dumps](#)

[300-515 Practice Test](#)

[300-515 Study Guide](#)