



# 300-425<sup>Q&As</sup>

Designing Cisco Enterprise Wireless Networks (ENWLSD)

## Pass Cisco 300-425 Exam with 100% Guarantee

Free Download Real Questions & Answers **PDF** and **VCE** file from:

<https://www.passapply.com/300-425.html>

100% Passing Guarantee  
100% Money Back Assurance

Following Questions and Answers are all new published by Cisco  
Official Exam Center

-  **Instant Download** After Purchase
-  **100% Money Back** Guarantee
-  **365 Days** Free Update
-  **800,000+** Satisfied Customers





### QUESTION 1

WLC SSO is set up between two WLCs in a service provider network serving public spaces. On WLC failover, it is noticed that only about half of the original client count is now showing on the secondary WLC, although it is currently showing the role as active. Which design side case explains the issue?

- A. The secondary WLC platform does not support the required client count.
- B. The WLCs had not completed database sync before the primary failure.
- C. SSO is not configured correctly.
- D. Some client sessions were in WebAuth-Req state before failover.

Correct Answer: D

---

### QUESTION 2

The wireless survey report shows APs staggered throughout a facility, with several of them placed on the exterior walls. Other APs are located at building corners and major turns in the structure layout. Assuming that all survey locations are optimized with a minimum of -67 RSSI at cell edges with 20% overlapping cells, for which purpose is this survey model used?

- A. location services, VoIP, data, and video
- B. streaming video with VoIP, data, and HD resolution
- C. location-based services, BYOD preparation, and HD video streaming
- D. voice, data clients, and video on demand

Correct Answer: A

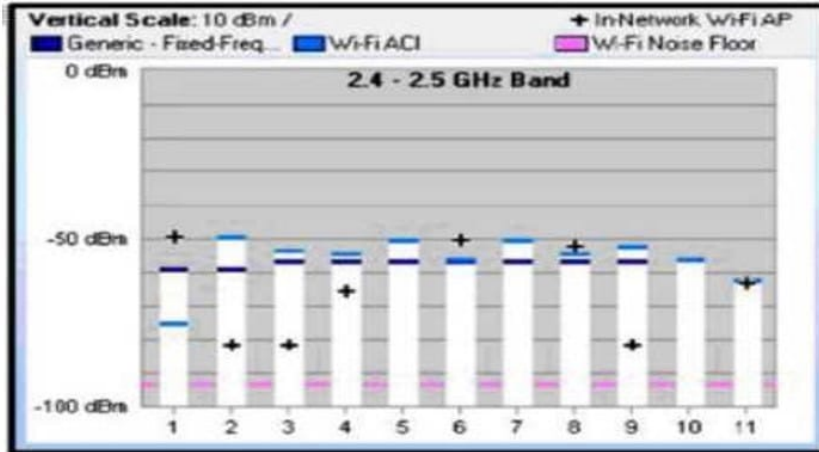
---

### QUESTION 3

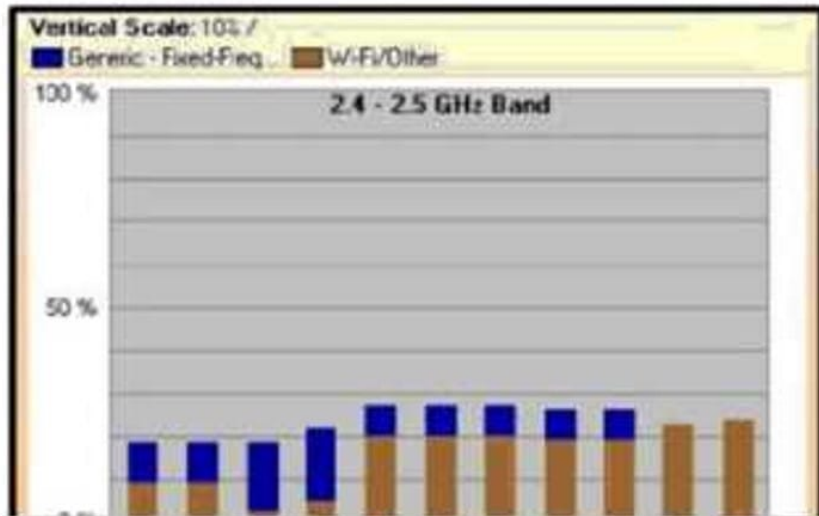
An engineer is performing a Layer 1 passive wireless site survey utilizing a channel analyzer software in the 2.4 GHz spectrum. Which chart indicates the ratio of interference present during the duration of the capture?



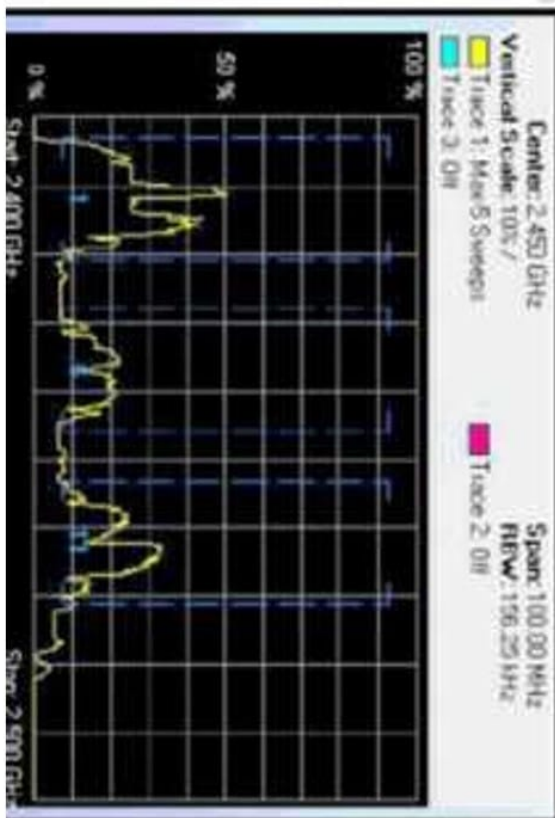
A



B



C





- A. Option A
- B. Option B
- C. Option C

Correct Answer: C

#### QUESTION 4

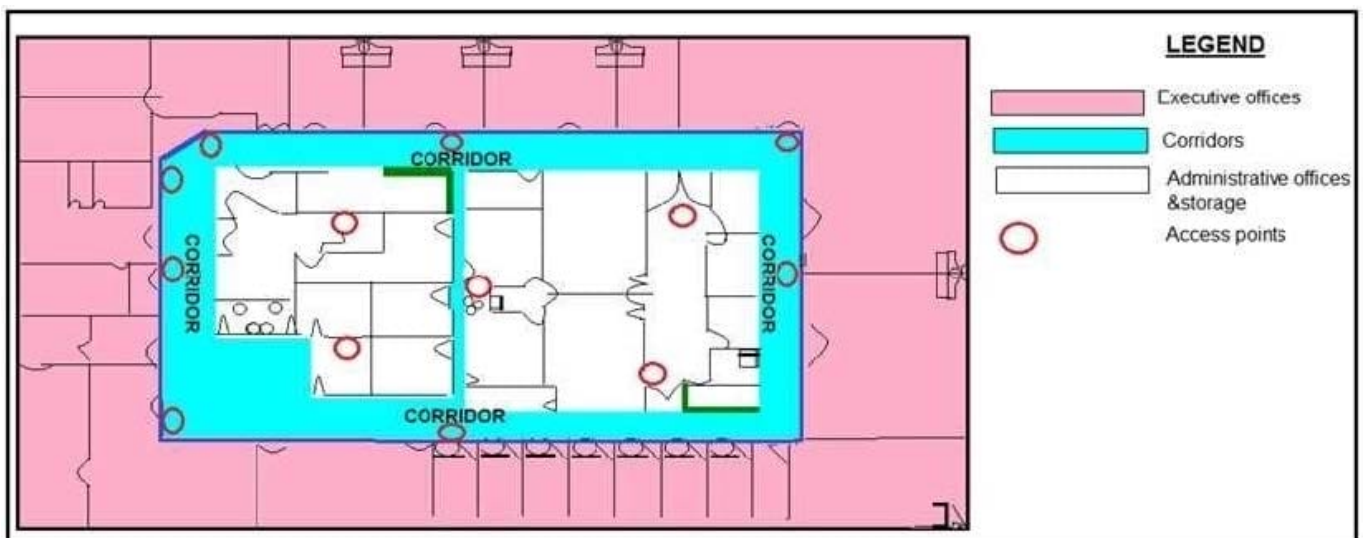
A 60,000-square foot outdoor area must be surveyed. The survey must be completed in the least amount of time. Which tool or equipment is used when performing the site survey?

- A. additional access points that use sniffer mode
- B. site survey tool that has modules in sniffer mode
- C. additional access points that use GPS mode
- D. site survey tool that has a GPS module

Correct Answer: D

#### QUESTION 5

Refer to the exhibit.



What is the main reason why the Wi-Fi design engineer took a different approach than installing the APs in the offices, even though that installation provides better coverage?

- A. aesthetics
- B. transmit power considerations



C. antenna gain

D. power supply considerations

Correct Answer: A

Reference: [https://www.cisco.com/en/US/docs/solutions/Enterprise/Mobility/emob30dg/RFDesign.html#wp10\\_00551](https://www.cisco.com/en/US/docs/solutions/Enterprise/Mobility/emob30dg/RFDesign.html#wp10_00551)

[300-425 VCE Dumps](#)

[300-425 Study Guide](#)

[300-425 Braindumps](#)