



300-420^{Q&As}

Designing Cisco Enterprise Networks (ENSLD)

Pass Cisco 300-420 Exam with 100% Guarantee

Free Download Real Questions & Answers **PDF** and **VCE** file from:

<https://www.passapply.com/300-420.html>

100% Passing Guarantee
100% Money Back Assurance

Following Questions and Answers are all new published by Cisco
Official Exam Center

-  **Instant Download** After Purchase
-  **100% Money Back** Guarantee
-  **365 Days** Free Update
-  **800,000+** Satisfied Customers





QUESTION 1

An enterprise customer has these requirements:

1.
end-to-end QoS for the business-critical applications and VoIP services based on CoS marking.
2.
flexibility to offer services such as IPv6 and multicast without any reliance on the service provider.
3.
support for full-mesh connectivity at Layer 2.

Which WAN connectivity option meets these requirements?

- A. VPWS
- B. MPLS VPN
- C. DMVPN
- D. VPLS

Correct Answer: D

QUESTION 2

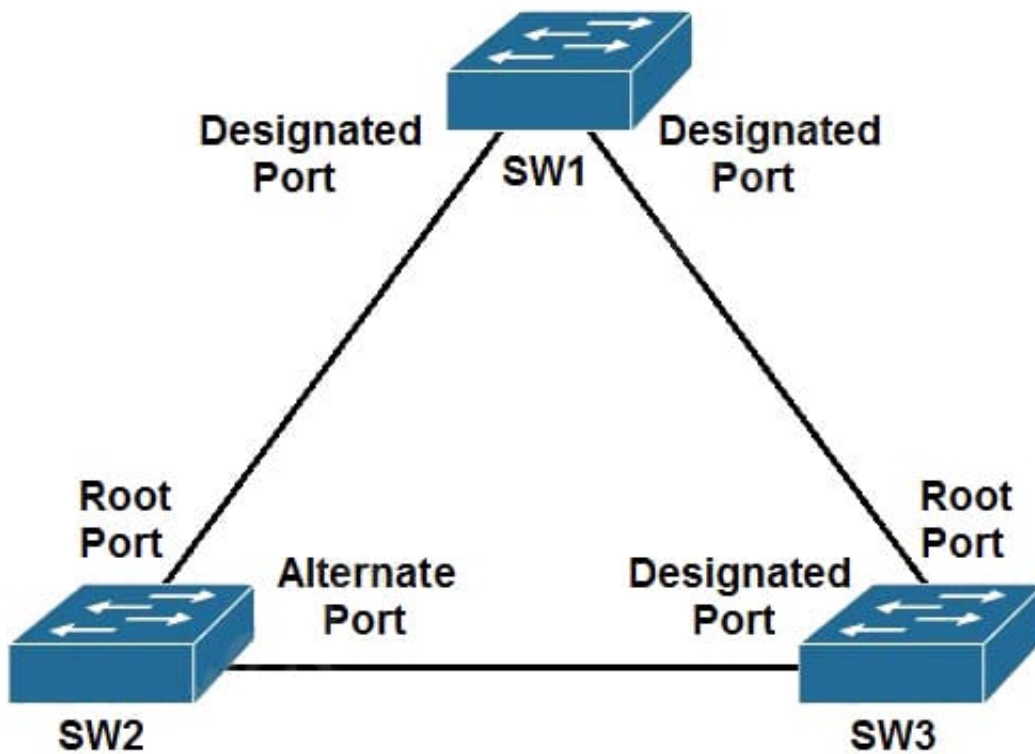
An architect is designing a network that will utilize the spanning tree protocol to ensure a loop-free topology. The network will support an engineering environment where it is necessary for end users to connect their own network switches for testing purposes. Which feature should the architect include in the design to ensure the spanning tree topology is not affected by these rogue switches?

- A. BPDU Skew Detection
- B. BPDU guard
- C. loop guard
- D. root guard

Correct Answer: D

QUESTION 3

Refer to the exhibit. The connection between SW2 and SW3 is fiber and occasionally experiences unidirectional link failure. An architect must optimize the network to reduce the change of layer2 forwarding loops when the link fails. Which solution should the architect include?

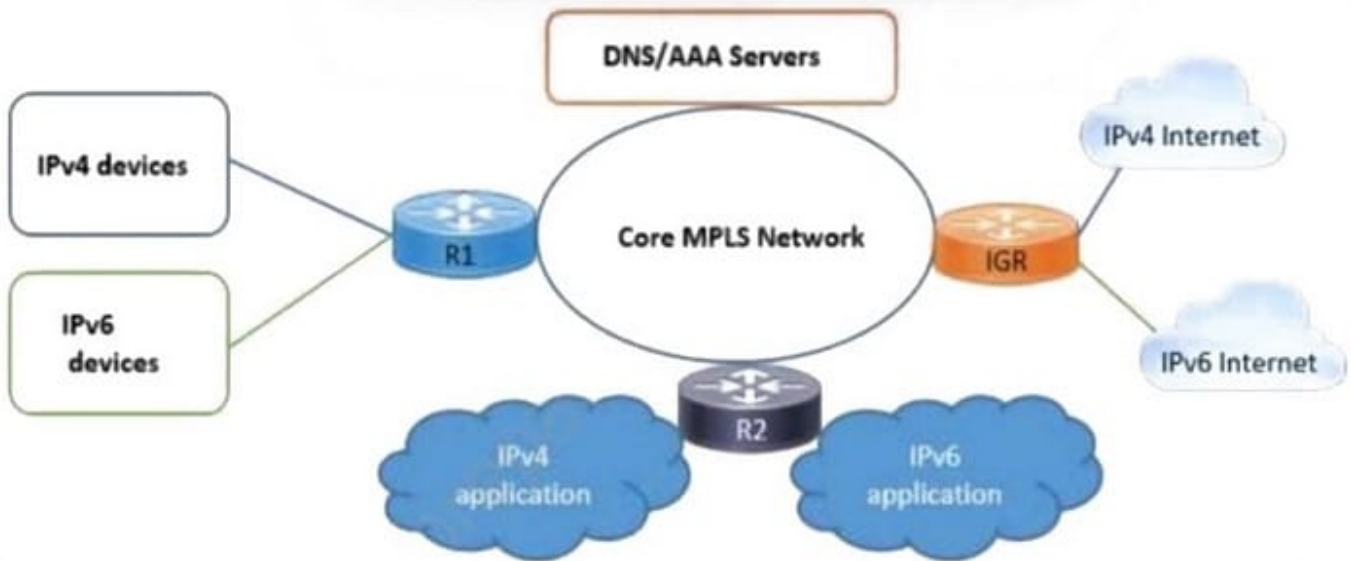


- A. Utilize 8PDU filter on SW3.
- B. Utilize loop guard on SW2
- C. Utilize BPDU guard on SW1
- D. Utilize root guard on SW1.

Correct Answer: B

QUESTION 4

Refer to the exhibit.



The failover time of ISP-2 is significantly shorter than ISP-1 when an interface on the ISP router toward the campus network fails. Which solution minimizes the downtime to the sub-second?

- A. Aggressive timers
- B. Next-hop address tracking
- C. Graceful-restart
- D. BFD

Correct Answer: D

BFD provides sub-second failure detection (<https://howdoesinternetwork.com/2018/bfd>), and next-hop tracking is enabled in IOS by default (https://www.cisco.com/c/en/us/td/docs/ios/12_2sb/feature/guide/sbbnhop.html) and has a 5 second delay by default. So, I strongly believe it's BFD

QUESTION 5

What is the purpose of a TLOC extension in a Cisco SD-WAN network fabric?

- A. to facilitate WAN Edge router redundancy within a site
- B. to identify the physical interface where a WAN Edge router connects to the WAN transport network
- C. to expand the number of colors that are potentially applied to a network transport interface
- D. to aggregate multiple physical interfaces into a single logical Interface

Correct Answer: A