



300-370^{Q&As}

Troubleshooting Cisco Wireless Enterprise Networks

Pass Cisco 300-370 Exam with 100% Guarantee

Free Download Real Questions & Answers **PDF** and **VCE** file from:

<https://www.passapply.com/300-370.html>

100% Passing Guarantee
100% Money Back Assurance

Following Questions and Answers are all new published by Cisco
Official Exam Center

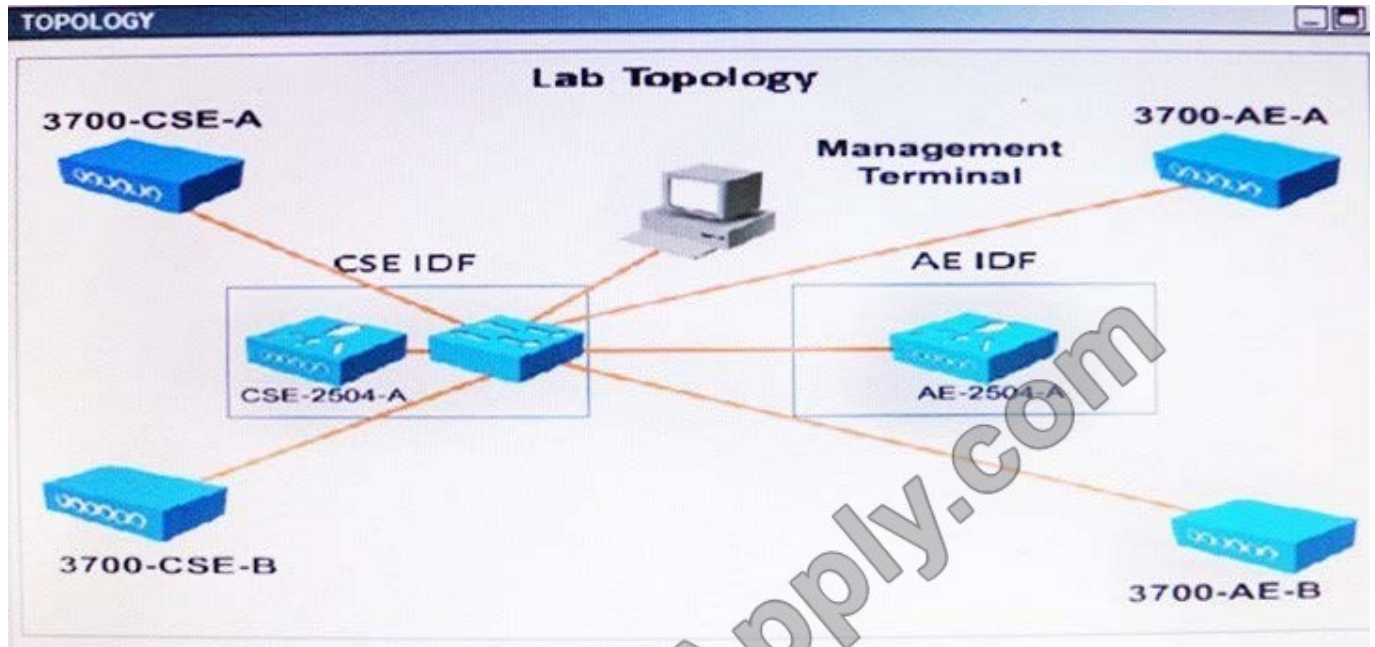
-  **Instant Download** After Purchase
-  **100% Money Back** Guarantee
-  **365 Days** Free Update
-  **800,000+** Satisfied Customers





QUESTION 1

Refer to the exhibit: Which two statements about the WLAN are true? (Choose two.)



Packet	Source	Destination	Channel	Data Rate	Size	Protocol
3377	Intel:2F:D3:70	Cisco:10:44:EF	136	24.0	48	EAP Response
3378	Cisco:10:44:EF	Intel:2F:D3:70	136	24.0	18	802.11 Ack
3379	Cisco:10:44:EF	Intel:2F:D3:70	136	24.0	85	EAP Request
3380	Intel:2F:D3:70	Cisco:10:44:EF	136	6.0	101	EAP Response
3381	Cisco:10:44:EF	Intel:2F:D3:70	136	6.0	18	802.11 Ack
3382	Cisco:10:44:EF	Intel:2F:D3:70	136	24.0	117	EAP Request
3383	Intel:2F:D3:70	Cisco:10:44:EF	136	24.0	149	EAP Response
3384	Cisco:10:44:EF	Intel:2F:D3:70	136	24.0	18	802.11 Ack
3385	Cisco:10:44:EF	Intel:2F:D3:70	136	24.0	133	EAP Request
3386	Intel:2F:D3:70	Cisco:10:44:EF	136	24.0	85	EAP Response
3387	Cisco:10:44:EF	Intel:2F:D3:70	136	24.0	18	802.11 Ack
3388	Intel:2F:D3:70	Cisco:10:44:EF	136	24.0	85	EAP Response
3389	Cisco:10:44:EF	Intel:2F:D3:70	136	24.0	18	802.11 Ack
3390	Cisco:10:44:EF	Intel:2F:D3:70	136	24.0	46	EAP Success
3391	Cisco:10:44:EF	Intel:2F:D3:70	136	24.0	159	EAPOL-Key
3392	Intel:2F:D3:70	Cisco:10:44:EF	136	24.0	161	EAPOL-Key
3393	Cisco:10:44:EF	Intel:2F:D3:70	136	24.0	18	802.11 Ack
3394	Cisco:10:44:EF	Intel:2F:D3:70	136	24.0	193	EAPOL-Key
3395	Intel:2F:D3:70	Cisco:10:44:EF	136	24.0	137	EAPOL-Key
3396	Cisco:10:44:EF	Intel:2F:D3:70	136	24.0	18	802.11 Ack
3397	Cisco:10:44:EF	Intel:2F:D3:70	136	24.0	24	802.11 RTS
3398	Cisco:10:44:EF	Intel:2F:D3:70	136	2.0	108	802.11 Encrypted Data
3399	Cisco:10:44:EF	Intel:2F:D3:70	136	24.0	24	802.11 RTS
3400	Cisco:10:44:EF	Intel:2F:D3:70	136	2.0	108	802.11 Encrypted Data

- A. The client has a 5 GHz connection.
- B. The client has authenticated.
- C. The client is 802.11n capable.



- D. The Cisco device is a 3600 series AP.
- E. 802.11b data rates are disabled in this WLAN.

Correct Answer: CE

QUESTION 2

Refer to the exhibit.

```
Apr 8 20:02:55.477: RADIUS(00000031): Send Access-Request
  to 10.0.0.3:1234 id 21645/145, len 139
Apr 8 20:02:55.478: RADIUS: authenticator B6 F7 BB 41 0E 9F 44 D1
  - 5A F0 E2 D7 5D 70 F2 76
Apr 8 20:02:55.478: RADIUS: User-Name          [1]      9      "aironet"
Apr 8 20:02:55.478: RADIUS: Framed-MTU        [12]     6      1400
Apr 8 20:02:55.478: RADIUS: Called-Station-Id    [30]    16      "0005.9a39.0374"
Apr 8 20:02:55.478: RADIUS: Calling-Station-Id    [31]    16      "0002.8aa6.304f"
Apr 8 20:02:55.478: RADIUS: Service-Type      [6]      6      Login      [1]
Apr 8 20:02:55.478: RADIUS: Message-Authenticator [30]    18      *
Apr 8 20:02:55.478: RADIUS: EAP-Message    [79]    14
  omitted
Apr 8 20:03:15.470: RADIUS/DECODE:
  parse response; FAIL
Apr 8 20:03:15.470: dot11_auth_dot1x_parse_aaa_resp:
  Received server response: FAIL
Apr 8 20:03:15.470: dot11_auth_dot1x_parse_aaa_resp:
  found eap pak in server response
Apr 8 20:03:15.470: dot11_auth_dot1x_parse_aaa_resp:
  detailed aaa_status 1
Apr 8 20:03:15.471: dot11_auth_dot1x_run_rfsm:
  Executing Action(SERVER_WAIT, SERVER_FAIL) for 0002.8aa6.304f
Apr 8 20:03:15.471: dot11_auth_dot1x_send_client_fail:
  Authentication failed for 0002.8aa6.304f
Apr 8 20:03:15.471: %DOT11-7-AUTH_FAILED: Station 0002.8aa6.304f
  Authentication failed
```

A client reports being unable to log into the wireless network. According to the output, which network information should be verified?

- A. the Failed Attempts log on the authentication server
- B. that the AP has IP connectivity to the authentication server
- C. that the user has an account on the authentication server
- D. that the authentication and accounting configuration are correct

Correct Answer: B

QUESTION 3



Which modulation, which was introduced in 802.11ac standard, influences end-user experience by providing the highest data rates and throughput?

- A. 256 QAM
- B. QPSK
- C. 16 QAM
- D. 64 QAM

Correct Answer: A

QUESTION 4

Which statement about the usage of the debug command in a Cisco Unified Wireless Network is true?

- A. Debug is enabled until manual shut off.
- B. Debug is a message logging severity 7.
- C. Debug is a restricted command and is not available in the AP CLI.
- D. Debug is available on the WLC serial console and web interface.

Correct Answer: B

QUESTION 5

You have a single Cisco 5508 WLC with a management IP address of 172.16.24.5/24. You need to register 50 new Cisco AIR-CAP3702I-E-K9. Access Points to the WLC using DHCP option 43. The access points are connected to a switch in VLAN 37, which uses the 172.16.37.0/24 subnet. You have configured the DHCP scope on the switch like this:

```
Network 172.16.37.0 255.255.255.0 Default Router 172.16.37.1 Option 43 Aseii 172.16.24.5
```

The access points are failing to join the wireless LAN controller. Which command fixes the issue?

- A. Option 43 Hex F108.CA10.1805
- B. Option 43 Hex F104.AC10.1705
- C. Option 43 Hex F112.CA10.1805
- D. Option 43 Hex F104.AC10.1805

Correct Answer: D



To Read the [Whole Q&As](#), please purchase the [Complete Version](#) from [Our website](#).

Try our product !

100% Guaranteed Success
100% Money Back Guarantee
365 Days Free Update
Instant Download After Purchase
24x7 Customer Support
Average 99.9% Success Rate
More than 800,000 Satisfied Customers Worldwide
Multi-Platform capabilities - [Windows](#), [Mac](#), [Android](#), [iPhone](#), [iPod](#), [iPad](#), [Kindle](#)

We provide exam PDF and VCE of Cisco, Microsoft, IBM, CompTIA, Oracle and other IT Certifications. You can view Vendor list of All Certification Exams offered:

<https://www.passapply.com/allproducts>

Need Help

Please provide as much detail as possible so we can best assist you.
To update a previously submitted ticket:



 <p>One Year Free Update Free update is available within One Year after your purchase. After One Year, you will get 50% discounts for updating. And we are proud to boast a 24/7 efficient Customer Support system via Email.</p>	 <p>Money Back Guarantee To ensure that you are spending on quality products, we provide 100% money back guarantee for 30 days from the date of purchase.</p>	 <p>Security & Privacy We respect customer privacy. We use McAfee's security service to provide you with utmost security for your personal information & peace of mind.</p>
---	---	--

Any charges made through this site will appear as Global Simulators Limited.
All trademarks are the property of their respective owners.
Copyright © passapply, All Rights Reserved.