



300-370^{Q&As}

Troubleshooting Cisco Wireless Enterprise Networks

Pass Cisco 300-370 Exam with 100% Guarantee

Free Download Real Questions & Answers **PDF** and **VCE** file from:

<https://www.passapply.com/300-370.html>

100% Passing Guarantee
100% Money Back Assurance

Following Questions and Answers are all new published by Cisco
Official Exam Center

-  **Instant Download** After Purchase
-  **100% Money Back** Guarantee
-  **365 Days** Free Update
-  **800,000+** Satisfied Customers





QUESTION 1

A Wireless LAN Cisco engineer is troubleshooting 802.11ac WLAN at customer site. Due to interferences with neighboring 802.11n networks, the engineer must determine the current primary/secondary channel allocation to enhance the current configuration. Channel 60 has been chosen by the customer as primary 20 MHz channel. Which combination determines the resulting primary 40 MHz and primary 80 MHz channels?

- A. primary 40 MHz: channel 62, primary 80 MHz: channel 58
- B. primary 40 MHz: channel 54, primary 80 MHz: channel 58
- C. primary 40 MHz: channel 64, primary 80 MHz: channel 60
- D. primary 40 MHz: channel 60, primary 80 MHz: channel 56

Correct Answer: A

QUESTION 2

Refer to the exhibit.

RAP1	RAP2
<pre>dot11 ssid wlan1 authentication open eap eap authentication network-eap eap authentication key-management wpa version 2 dot1x credentials wgb dot1x eap profile eap1 no ids mfp client eap profile eap1 method fast eap profile eap11 method tls dot1x credentials wgb username cisco password 7 1511021F0725 interface Dot11Radio0 encryption mode ciphers aes-ccm ssid wlan1</pre>	<pre>dot11 ssid wlan1 authentication open eap eap authentication network-eap eap authentication key-management wpa version 2 dot1x credentials wgb dot1x eap profile eap1 no ids mfp client eap profile eap1 method fast eap profile eap11 method tls dot1x credentials wgb username cisco password 7 1511021F0725 interface Dot11Radio0 encryption mode ciphers aes-ccm ssid wlan1</pre>

A mobile station in a factory contains an AP configured as a work group bridge that authenticates to a root AP using EAP-FAST. To be able to use the mobile station in further parts of the factory, another root AP is installed and also configured for EAP-FAST. When the mobile station is attempting to roam to the other AP, it loses connection yet can still authenticate to the first one. What is the cause for the failed authentication on RAP2?

- A. RAP1 is using a different authentication protocol than RAP2.
- B. RAP2 has a different SSID than RAP1.
- C. RAP1 is using a different encryption than RAP2.
- D. The authentication username and password is different.



Correct Answer: A

QUESTION 3

You are troubleshooting an AP that fails to join a WLC. Which step of the DTLS handshake is first when establishing a secure CAPWAP connection?

- A. ServerHello
- B. HelloVerifyRequest
- C. Server-ChangeCipherSpec
- D. ClientHello

Correct Answer: D

QUESTION 4

Refer to the exhibit.

(Cisco Controller) > show ap join state detailed 00:ab:00:ab:00:ab

```
Discovery phase statistics
- Discovery requests received ..... 10
- Successful discovery responses sent ..... 5
- Unsuccessful discovery request processing..... 2113123
- Reason for last unsuccessful discovery attempt.....
  Discovery request received on unsupported VLAN
- Time at last successful discovery attempt.....
  Jan 30 14:30:12.284
- Time at last unsuccessful discovery attempt.....
  Jan 30 14:30:12.288

Join phase statistics
- Join requests received..... 4
- Successful join responses sent..... 0
- Unsuccessful join request processing..... 4
- Reason for last unsuccessful join attempt.....
  Certificate payload in join request contains invalid
  certificate
- Time at last successful join attempt.....
  Not applicable
- Time at last unsuccessful join attempt.....
  Mar 06 19:19:03.345

Configuration phase statistics
- Configuration requests received..... 0
- Successful configuration responses sent ..... 0
- Unsuccessful configuration request processing..... 0
- Reason for last unsuccessful configuration attempt....
  Not applicable
- Time at last successful configuration attempt.....
  Not applicable
- Time at last unsuccessful configuration attempt.....
  Not applicable

Last AP message decryption failure details
- Reason for last message decryption failure.....
  Not applicable

Last AP disconnect details
- Reason for last AP connection failure.....
  Not applicable

Last join error summary
- Type of error that occurred last.....
  Failed to send Lvapp discovery response
- Reason for error that occurred last.....
  Discovery request received on unsupported VLAN
- Time at which the last join error occurred.....
  Jan 30 14:30:12:288
```

Which statement about the join process of the access point is true?

- A. The time on the controller is outside of the certificates validity time interval, so the join phase failed.
- B. The AP moved from this controller to its primary controller.
- C. The controller rejected most of the discovery requests from the AP because they were not received on the management interface subnet. The AP failed to join the controller.
- D. The AP successfully joined the controller.
- E. The AP failed to join because the self-signed certificate of the AP on the controller was not correct.



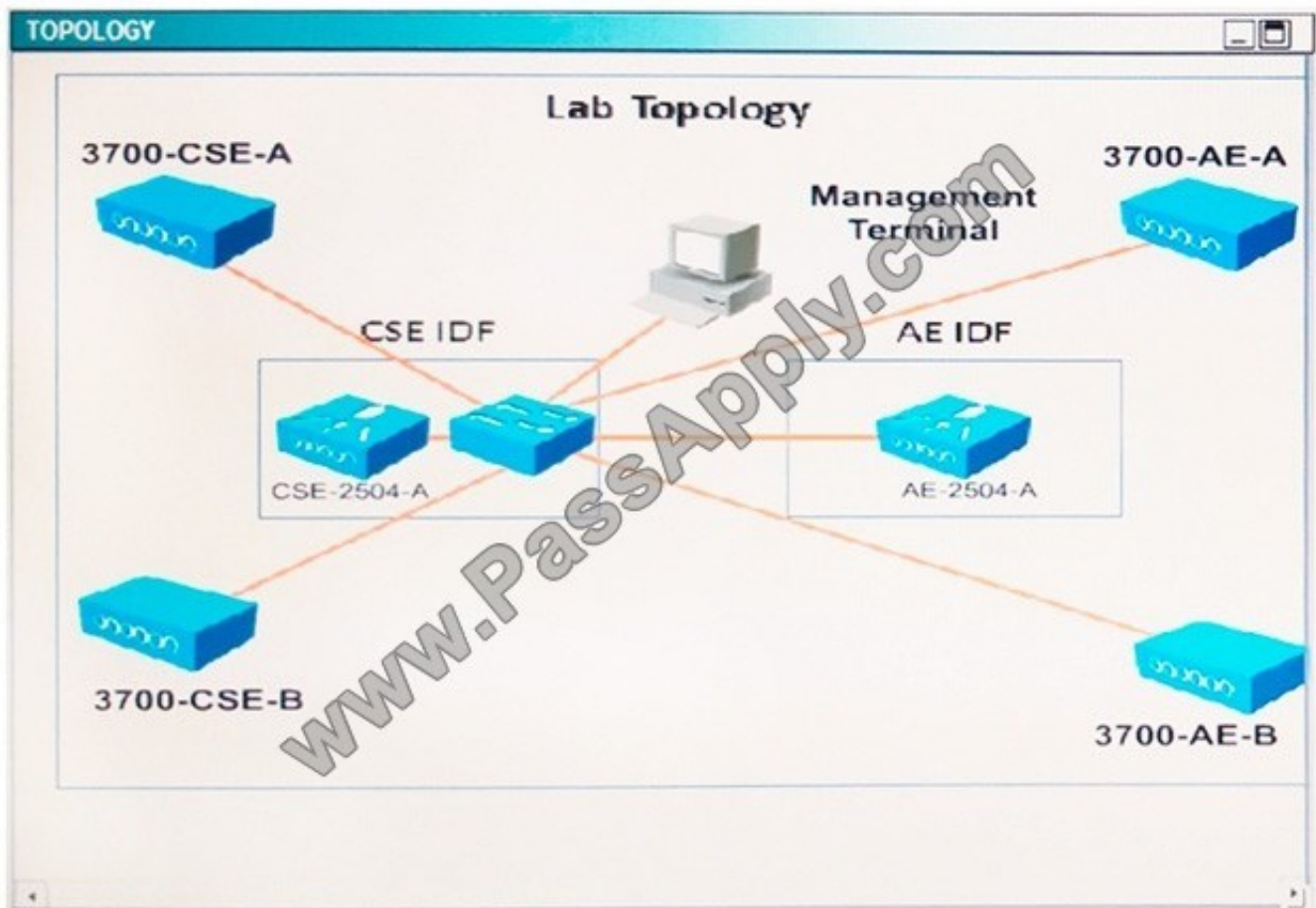
Correct Answer: C

QUESTION 5

Scenario The big Engineering IT team has been in the lab to test some new features that the existing network does not support. The AP Groups, AP Failover, and Local Web Auth features are having problems. In this test environment, the controllers support the only Composite Structural Engineering and Aerodynamic Engineering groups. All SSIDs must omit the department name.

Refer to the exhibit. The diagram is the floor plan for the Big Engineering office and the distribution of the departments. These tables show how the controllers have been configured.

Note, not all menu items, text boxes, or radio buttons are active.



BE-GA Controller Management Interfaces

Name	IP address	Gateway	DHCP Interface
CSE-2504A	192.168.2.98/24	192.168.2.1	192.168.2.98
AE-2504A	192.168.3.98/24	192.168.3.1	192.168.3.98
HF-2504A	192.168.4.98/24	192.168.4.1	192.168.4.98



Composite and Structural Engineering (CSE) WLANs

Profile Name	SSID
CSE-Engineering	CSE-Engineering
CSE-Contractors	CSE-Contractors
CSE-Employees	CSE-Employees

AP Groups-CSE-WLANs

WLANs	APs
CSE-Engineering	3700-CSE-A
CSE-Contractors	3700-CSE-B
CSE-Employees	

AE-User Names and Passwords

User Name	Password
Joan Smith	aetest
Carol Black	aetest

You review the configuration of the test network controller. Which four changes must be made to resolve the problems? (Choose four.)

- A. Change the High Availability Primary Controller Management Interfaces IP address for access point 3700-CSE-A.
- B. Remove the current WLANs and replace them with WLANs that have the same SSID names as on the AE-2504A controller.
- C. Add the Local Net User names and passwords.
- D. Change the Layer2 security to none and Layer3 Security to Web Policy for the CSE-Contractors WLAN.
- E. Remove the current WLAN from the CSE-WLAN AP Group and add all three of the WLANs configured in the CSE-2504A.
- F. Add the CSE APs to the CSE-WLANs AP-Group.
- G. Change the High Availability Secondary Controller management Interface IP address for access point 3700-CSE-B.
- H. Change the High Availability Primary Controller Name for access point 3700-CSE-B.

Correct Answer: BCDF



To Read the [Whole Q&As](#), please purchase the [Complete Version](#) from [Our website](#).

Try our product !

100% Guaranteed Success
100% Money Back Guarantee
365 Days Free Update
Instant Download After Purchase
24x7 Customer Support
Average 99.9% Success Rate
More than 800,000 Satisfied Customers Worldwide
Multi-Platform capabilities - [Windows](#), [Mac](#), [Android](#), [iPhone](#), [iPod](#), [iPad](#), [Kindle](#)

We provide exam PDF and VCE of Cisco, Microsoft, IBM, CompTIA, Oracle and other IT Certifications. You can view Vendor list of All Certification Exams offered:

<https://www.passapply.com/allproducts>

Need Help

Please provide as much detail as possible so we can best assist you.
To update a previously submitted ticket:



 <p>One Year Free Update Free update is available within One Year after your purchase. After One Year, you will get 50% discounts for updating. And we are proud to boast a 24/7 efficient Customer Support system via Email.</p>	 <p>Money Back Guarantee To ensure that you are spending on quality products, we provide 100% money back guarantee for 30 days from the date of purchase.</p>	 <p>Security & Privacy We respect customer privacy. We use McAfee's security service to provide you with utmost security for your personal information & peace of mind.</p>
---	---	--

Any charges made through this site will appear as Global Simulators Limited.
All trademarks are the property of their respective owners.
Copyright © passapply, All Rights Reserved.