



300-210^{Q&As}

Cisco Threat Control Solutions

Pass Cisco 300-210 Exam with 100% Guarantee

Free Download Real Questions & Answers **PDF** and **VCE** file from:

<https://www.passapply.com/300-210.html>

100% Passing Guarantee
100% Money Back Assurance

Following Questions and Answers are all new published by Cisco
Official Exam Center

- ⚙ **Instant Download** After Purchase
- ⚙ **100% Money Back** Guarantee
- ⚙ **365 Days** Free Update
- ⚙ **800,000+** Satisfied Customers





QUESTION 1

With Cisco AMP for Endpoints, which option shows a list of all files that have been executed in your environment?

- A. vulnerable software
- B. file analysis
- C. detections
- D. prevalence
- E. threat root cause

Correct Answer: C

QUESTION 2

Instructions

You can click the grey buttons at the bottom of this frame to view the different windows.

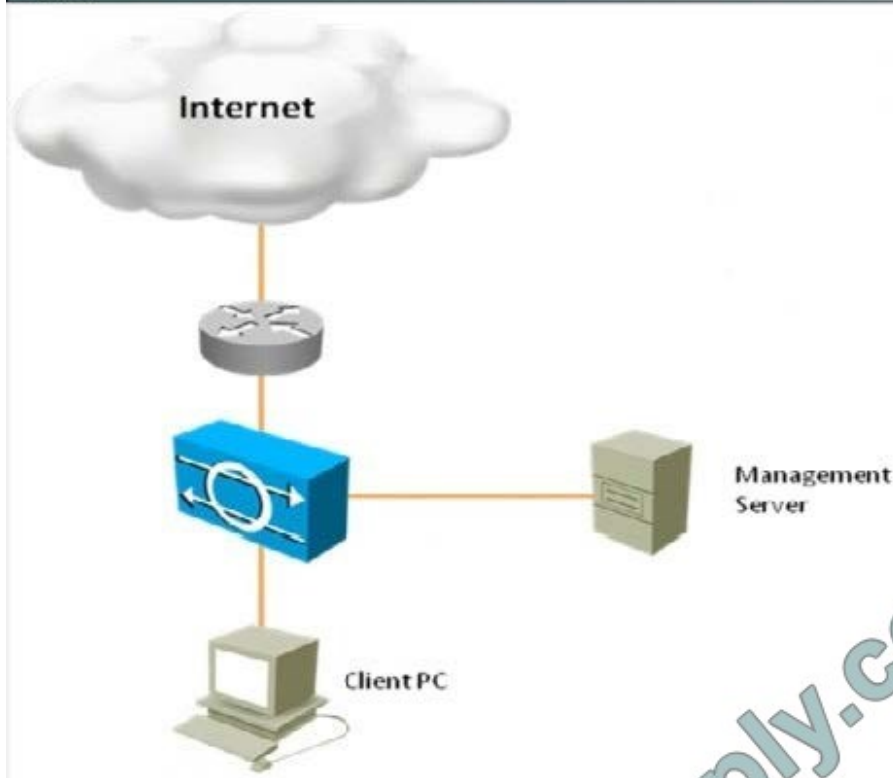
To minimize the window, click the [-]. To move the window, click the title bar and drag the window.

Scenario

Using Cisco IPS Device Manager (IDM), answer the multiple choice questions.



Topology



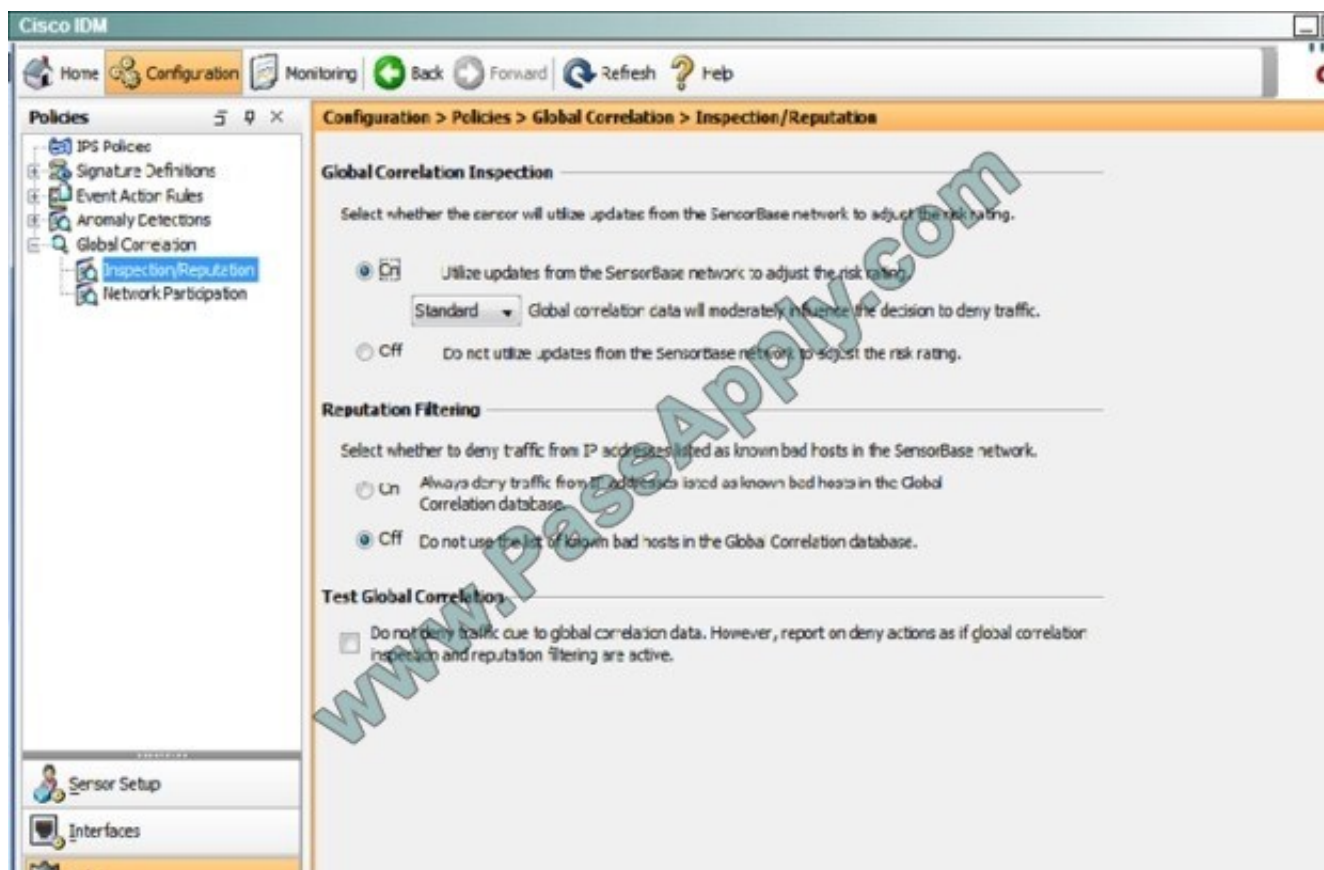


What action will the sensor take regarding IP addresses listed as known bad hosts in the Cisco SensorBase network?

- A. Global correlation is configured in Audit mode forttesting the feature without actually denying any hosts.
- B. Global correlation is configured in Aggressive mode, which has a very aggressive effect on deny actions.
- C. It will not adjust risk rating values based on the known bad hosts list.
- D. Reputation filtering is disabled.

Correct Answer: D

This can be seen on the Globabl Correlation ?Inspection/Reputation tab show below:



QUESTION 3

Which four parameters must be defined in an ISAKMP policy when creating an IPsec site-to-site VPN using the Cisco ASDM? (Choose four.)

- A. encryption algorithm
- B. hash algorithm
- C. authentication method
- D. IP address of remote IPsec peer



E. D-H group

F. perfect forward secrecy

Correct Answer: ABCE

QUESTION 4

Which version of AsyncOS for web is required to deploy the Web Security Appliance as a CWS connector?

A. AsyncOS version 7.7.x

B. AsyncOS version 7.5.x

C. AsyncOS version 7.5.7

D. AsyncOS version 7.5.0

Correct Answer: C

QUESTION 5

What is the authentication method for an encryption envelope that is set to medium security?

A. The recipient must always enter a password, even if credentials are cached.

B. A password is required, but cached credentials are permitted.

C. The recipient must acknowledge the sensitivity of the message before it opens.

D. The recipient can open the message without authentication.

Correct Answer: B

[Latest 300-210 Dumps](#)

[300-210 VCE Dumps](#)

[300-210 Practice Test](#)



To Read the [Whole Q&As](#), please purchase the [Complete Version](#) from [Our website](#).

Try our product !

100% Guaranteed Success
100% Money Back Guarantee
365 Days Free Update
Instant Download After Purchase
24x7 Customer Support
Average 99.9% Success Rate
More than 800,000 Satisfied Customers Worldwide
Multi-Platform capabilities - [Windows](#), [Mac](#), [Android](#), [iPhone](#), [iPod](#), [iPad](#), [Kindle](#)

We provide exam PDF and VCE of Cisco, Microsoft, IBM, CompTIA, Oracle and other IT Certifications.
You can view Vendor list of All Certification Exams offered:

<https://www.passapply.com/allproducts>

Need Help

Please provide as much detail as possible so we can best assist you.
To update a previously submitted ticket:



 One Year Free Update Free update is available within One Year after your purchase. After One Year, you will get 50% discounts for updating. And we are proud to boast a 24/7 efficient Customer Support system via Email.	 Money Back Guarantee To ensure that you are spending on quality products, we provide 100% money back guarantee for 30 days from the date of purchase.	 Security & Privacy We respect customer privacy. We use McAfee's security service to provide you with utmost security for your personal information & peace of mind.
---	---	--

Any charges made through this site will appear as Global Simulators Limited.
All trademarks are the property of their respective owners.
Copyright © passapply, All Rights Reserved.