



300-206^{Q&As}

Implementing Cisco Edge Network Security Solutions

Pass Cisco 300-206 Exam with 100% Guarantee

Free Download Real Questions & Answers **PDF** and **VCE** file from:

<https://www.passapply.com/300-206.html>

100% Passing Guarantee
100% Money Back Assurance

Following Questions and Answers are all new published by Cisco
Official Exam Center

-  **Instant Download** After Purchase
-  **100% Money Back** Guarantee
-  **365 Days** Free Update
-  **800,000+** Satisfied Customers





QUESTION 1

What are the three types of private VLAN ports? (Choose three.)

- A. promiscuous
- B. isolated
- C. community
- D. primary
- E. secondary
- F. trunk

Correct Answer: ABC

QUESTION 2

Hotspot Question



Scenario

Click on the PC icon to access the Cisco ASDM. Using ASDM, answer the following three questions regarding the ASA configurations. (1 pt each per question)

Instructions

- Enter IOS commands on the device to verify network operation and answer for multiple-choice questions.
- **THIS TASK DOES NOT REQUIRE DEVICE CONFIGURATION.**
- Click on the Console PC to gain access to the console of the router. No console or enable passwords are required.
- To access the multiple-choice questions, click on the numbered boxes on the left of the top panel.
- There are **four** multiple-choice questions with this task. Be sure to answer all four questions before selecting the Next button.

CiscoASDM





The screenshot displays the Cisco ASDM 7.1 interface for a Cisco ASA 5515. The main dashboard includes several sections:

- Device Information:** Host Name: HQ-ASA.secure-x.local, ASA Version: 9.1(1)4, ASDM Version: 7.1(2), Firewall Mode: Routed, Environment Status: OK.
- Interface Status:** A table showing the status of various interfaces (DMZ, Guest, Site-To-Site, inside, management, outside).
- VPN Sessions:** Shows 0 sessions for IPsec, Clientless SSL VPN, and AnyConnect Client.
- System Resources Status:** A graph showing memory usage (72MB) and other resource metrics.
- Traffic Status:** A graph showing connections per second usage for UDP, TCP, and Total.
- Latest ASDM Syslog Messages:** A table of log entries with severity level 6.

Severity	Date	Time	Syslog ID	Source IP	Source	Destination IP	Destina	Description
6	May 21 2014	16:27:24	302016	209.165.200.233	53	10.10.3.20	55282	Teardown UDP connection 284717 for outside:209.165.200.233/53 to inside:10.10.3.20/55
6	May 21 2014	16:27:24	302016	209.165.200.233	53	10.10.3.20	54178	Teardown UDP connection 284715 for outside:209.165.200.233/53 to inside:10.10.3.20/54
6	May 21 2014	16:27:24	302016	209.165.200.233	53	10.10.3.20	54178	Teardown UDP connection 284715 for outside:209.165.200.233/53 to inside:10.10.3.20/54
6	May 21 2014	16:27:24	302016	172.16.1.55	62372	10.10.3.20	53	Teardown UDP connection 284830 for DMZ:172.16.1.55/62372 to inside:10.10.3.20/53 dur...

Which statement is true of the logging configuration on the Cisco ASA?

- A. The contents of the internal buffer will be saved to an FTP server before the buffer is overwritten.
- B. The contents of the internal buffer will be saved to flash memory before the buffer is overwritten.
- C. System log messages with a severity level of six and higher will be logged to the internal buffer.
- D. System log messages with a severity level of six and lower will be logged to the internal buffer.

Correct Answer: C



Exhibit18

Cisco ASDM 7.1 for ASA - 10.10.2.1

File View Tools Wizards Window Help

Home Configuration Monitoring Save Refresh Back Forward Help

Device Management

- Management Access
- Licensing
- System Image/Configuration
- High Availability and Scalability
- Logging
 - Logging Setup
 - E-Mail Setup
 - Event Lists
 - Logging Filters
 - Rate Limit
 - Syslog Servers
 - Syslog Setup
 - SMTP
 - NetFlow
- Smart Call-Home
- Cloud Web Security
- Users/AAA
- Certificate Management
- DHCP
- DNS
- Advanced

Device Setup

Firewall

Remote Access VPN

Site-to-Site VPN

IPS

Configuration > Device Management > Logging > Logging Setup

Enable logging Enable logging on the failover standby unit

Send debug messages as syslogs Send syslogs in EMBLEM format

Logging to Internal Buffer

Specify the size of the internal buffer to which syslogs will be saved. When the buffer fills up, it will be overwritten.

Buffer Size: bytes

You can choose to save the buffer contents before the buffer is overwritten.

Save Buffer To: FTP Server

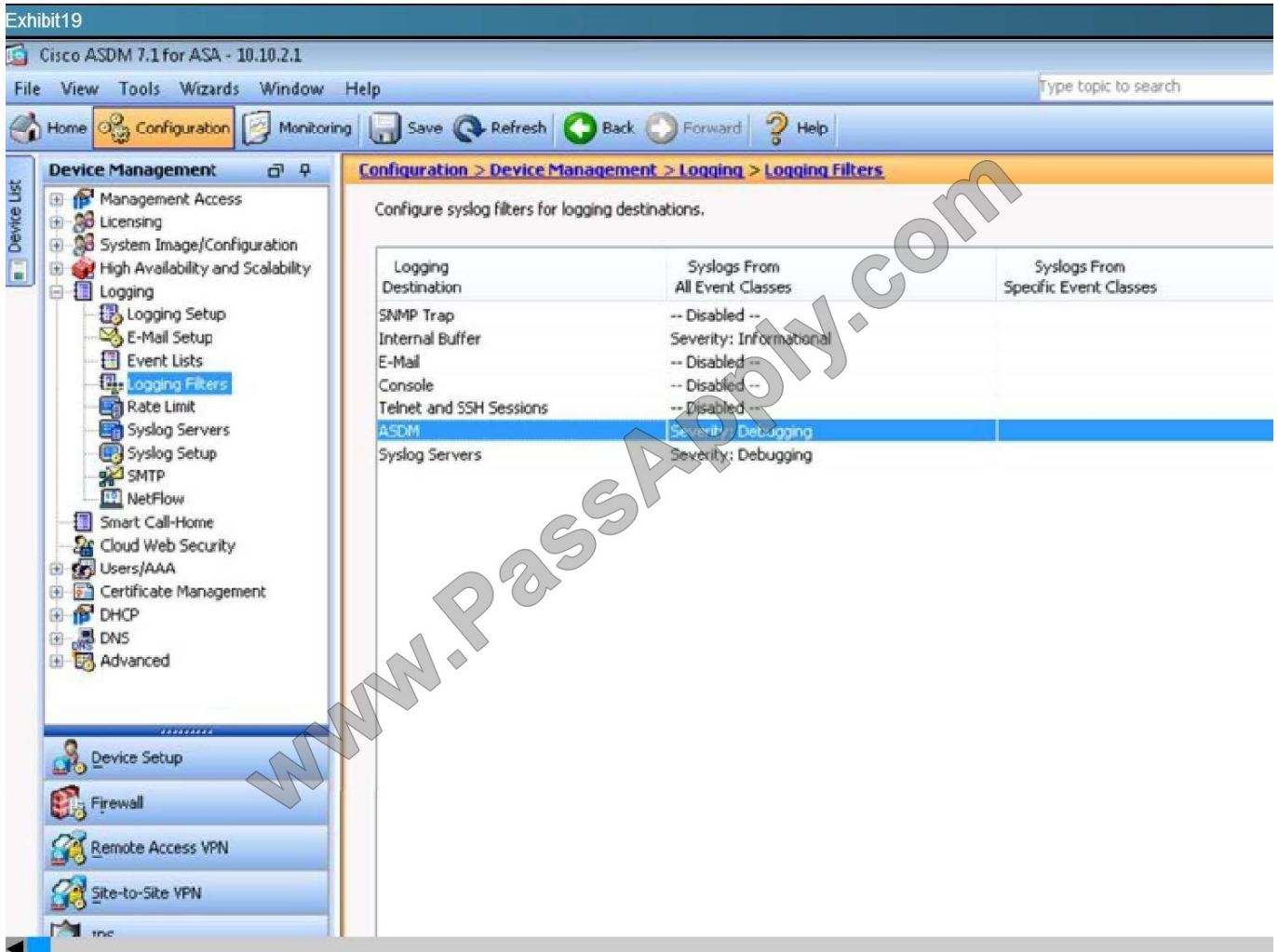
Flash

ASDM Logging

Specify the size of the queue for syslogs intended for viewing in ASDM.

Queue Size:

www.PassApply.com



QUESTION 3

With Cisco ASA active/standby failover, by default, how many monitored interface failures will cause failover to occur?

- A. 1
- B. 2
- C. 3
- D. 4
- E. 5

Correct Answer: A

QUESTION 4

Which two features are supported when configuring clustering of multiple Cisco ASA appliances? (Choose two.)



- A. NAT
- B. dynamic routing
- C. SSL remote access VPN
- D. IPSec remote access VPN

Correct Answer: AB

QUESTION 5

Drag and Drop Question

Refer to the exhibit. You have a business partner who has a host IP address of 209.165.202.130. You have a host object that has an IP address of 172.16.0.100. You need to create a NAT rule that allows 209.165.202.130 to connect over the Internet to 172.16.0.100 by using an object that has a public IP address of 209.165.200.228. The partner IP address must be translated to an internal IP address of 172.16.0.50 for security reasons. Drag and drop the NAT criteria options from the left onto the correct host objects on the right.



Add NAT Rule

Match Criteria: Original Packet

Source Interface: external Destination Interface: inside

Source Address: any Destination Address: any

Service: any

Action: Translated Packet

Source NAT Type: Static

Source Address: -- Original -- Destination Address: -- Original --

Use one-to-one address translation

PAT Pool Translated Address: Service: -- Original --

Round Robin

Extend PAT uniqueness to per destination instead of per interface

Translate TCP and UDP ports into flat range 1024-65535 Include range 1-1023

Fall through to interface PAT

Use IPv6 for source interface PAT Use IPv6 for destination interface PAT

Options

Enable rule

Translate DNS replies that match this rule

Disable Proxy ARP on egress interface

Lookup route table to locate egress interface

Direction: Both

Description:

OK Cancel Help

Select and Place:



destination address in the original packet area	209.165.202.130
destination address in the translated packet area	209.165.200.228
source address in the original packet area	172.16.0.50
source address in the translated packet area	172.16.0.100

Correct Answer:

	destination address in the original packet area
	destination address in the translated packet area
	source address in the translated packet area
	source address in the original packet area

[300-206 PDF Dumps](#)

[300-206 VCE Dumps](#)

[300-206 Exam Questions](#)



To Read the [Whole Q&As](#), please purchase the [Complete Version](#) from [Our website](#).

Try our product !

100% Guaranteed Success
100% Money Back Guarantee
365 Days Free Update
Instant Download After Purchase
24x7 Customer Support
Average 99.9% Success Rate
More than 800,000 Satisfied Customers Worldwide
Multi-Platform capabilities - [Windows](#), [Mac](#), [Android](#), [iPhone](#), [iPod](#), [iPad](#), [Kindle](#)

We provide exam PDF and VCE of Cisco, Microsoft, IBM, CompTIA, Oracle and other IT Certifications.
You can view Vendor list of All Certification Exams offered:

<https://www.passapply.com/allproducts>

Need Help

Please provide as much detail as possible so we can best assist you.
To update a previously submitted ticket:



 <p>One Year Free Update Free update is available within One Year after your purchase. After One Year, you will get 50% discounts for updating. And we are proud to boast a 24/7 efficient Customer Support system via Email.</p>	 <p>Money Back Guarantee To ensure that you are spending on quality products, we provide 100% money back guarantee for 30 days from the date of purchase.</p>	 <p>Security & Privacy We respect customer privacy. We use McAfee's security service to provide you with utmost security for your personal information & peace of mind.</p>
---	---	--

Any charges made through this site will appear as Global Simulators Limited.
All trademarks are the property of their respective owners.
Copyright © passapply, All Rights Reserved.