



300-180^{Q&As}

Troubleshooting Cisco Data Center Infrastructure

Pass Cisco 300-180 Exam with 100% Guarantee

Free Download Real Questions & Answers **PDF** and **VCE** file from:

<https://www.passapply.com/300-180.html>

100% Passing Guarantee
100% Money Back Assurance

Following Questions and Answers are all new published by Cisco
Official Exam Center

-  **Instant Download** After Purchase
-  **100% Money Back** Guarantee
-  **365 Days** Free Update
-  **800,000+** Satisfied Customers





QUESTION 1

Refer to the exhibit.

```
FSPF-3-HELLO_MISMATCH: %$VSAN <vsan-id>%$ mismatch in hello timer in the hello packet on  
interface san-port-channel <channel-id>  
%FSPF-3-FC2_PROC_ERR: %$VSAN <vsan-id>%$ Error in processing HELLO packet on interface  
san-port-channel <channel-id>, Error = Bad packet received
```

VSAN traffic is not being routed through SAN fabric. Which action is helpful to resolve the problem?

- A. Make sure that the FSPF hello interval value matches on both switches.
- B. Change the FSPF hello timer back to the default of 5 seconds.
- C. Make sure that the FSPF hello timers are different so that they do not compete.
- D. Make sure that the FSPF dead timers are both set to 0.

Correct Answer: A

QUESTION 2

Which occurrence happens during an ISSU in a single supervisor configuration?

- A. The control plane is offline for up to 300 seconds
- B. NTP sessions stay alive and active.
- C. FLOGI/fdisc or logo requests from servers fail until the ISSU is complete.
- D. The time-to-live value for CDP is increased (360 seconds) if it is less than the recommended timeout value.

Correct Answer: C

QUESTION 3

You plan to use OSPFv2 on several Cisco Nexus 9000 Series Switches. Which setting must match on the neighboring switches to establish adjacency?

- A. the LSA arrival time
- B. the dead interval
- C. the last flood scan time
- D. the retransmit interval

Correct Answer: B



An OSPFv2 interface must have a compatible configuration with a remote interface before the two can be considered neighbors. The two OSPFv2 interfaces must match the following criteria:

1.

Hello interval

2.

Dead interval

3.

Area ID (see the “Areas” section)

4.

Authentication

5.

Optional capabilities

Reference: https://www.cisco.com/c/en/us/td/docs/switches/datacenter/nexus9000/sw/6-x/unicast/configuration/guide/l3_cli_nxos/l3_ospf.html#52971

QUESTION 4



SR Watermark Image - Unregistered version - This line is removed when registered

- THIS TASK DOES NOT REQUIRE DEVICE CONFIGURATION.
- Before beginning the questions, carefully read the information in the Scenario tab and familiarize yourself with the network topology.
- To access the multiple-choice questions, click on the numbered boxes on the left of the top panel.
- There are four multiple-choice questions with this task. Be sure to answer all four questions before clicking the Next button.
- Use the tabs at the bottom of the question to navigate between the Topology and question-specific Exhibits. Exhibit_1 maps to Question 1, et cetera.

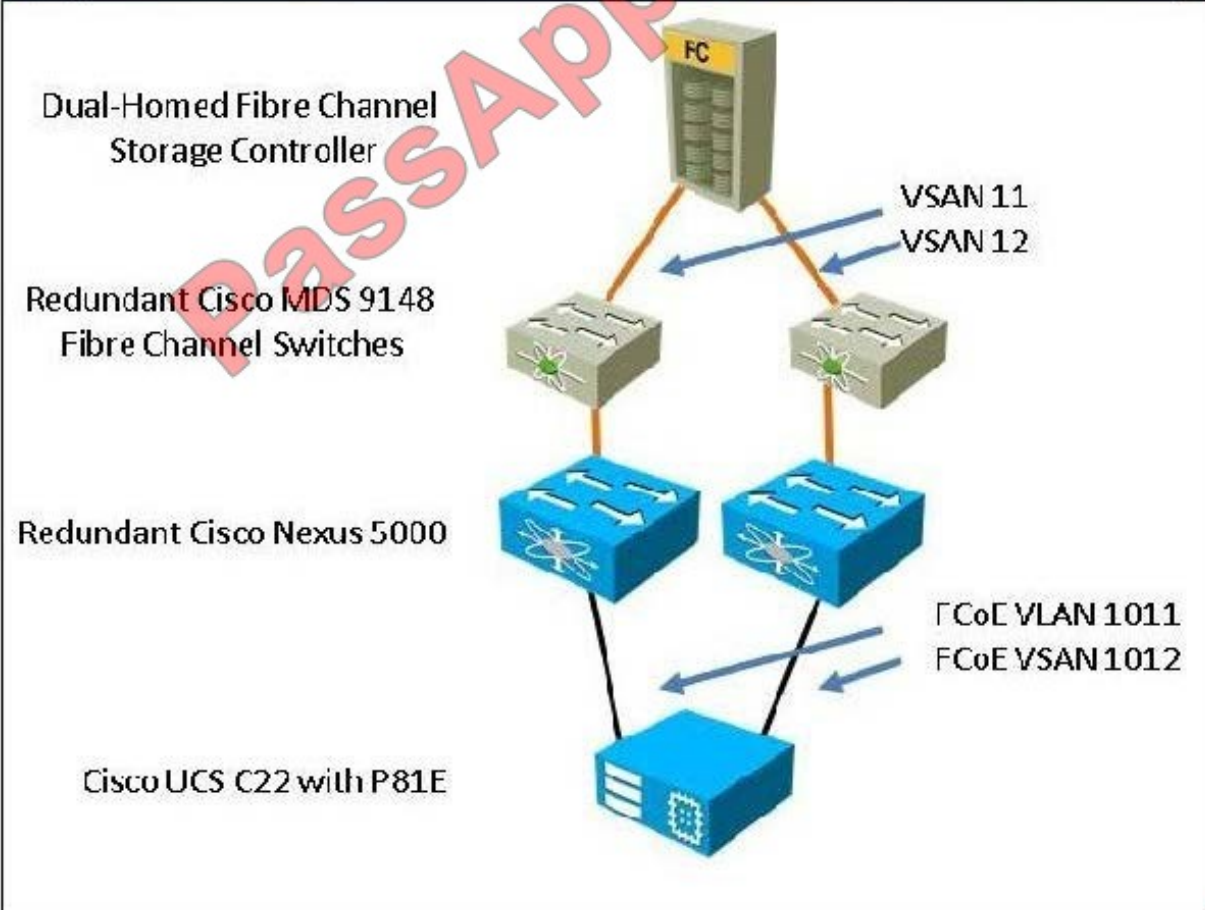
Scenario

You have received a trouble ticket from a customer with multiple FCoE issues deploying a Cisco UCS C22 M2 server. The server includes a Cisco UCS P81E VIC that has redundant connections to Cisco Nexus 5548 switches.

When the customer loads the installer for VMware ESXi 5.0, it is unable to connect to its boot LUN over Fabric A or Fabric B. To begin, you will concentrate your efforts on achieving connectivity on Fabric A.

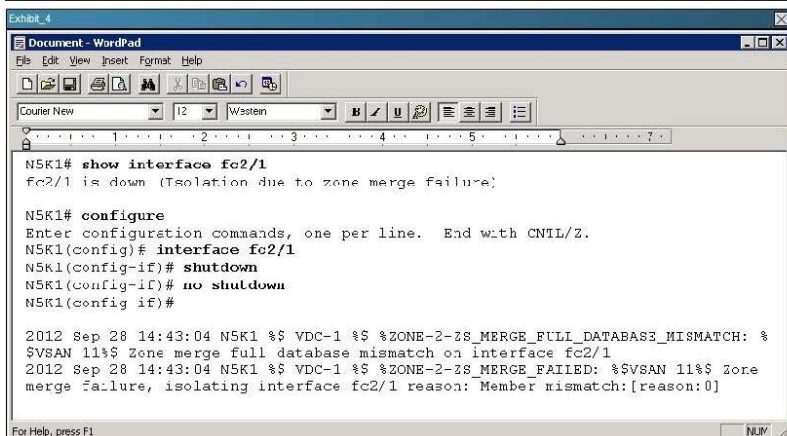
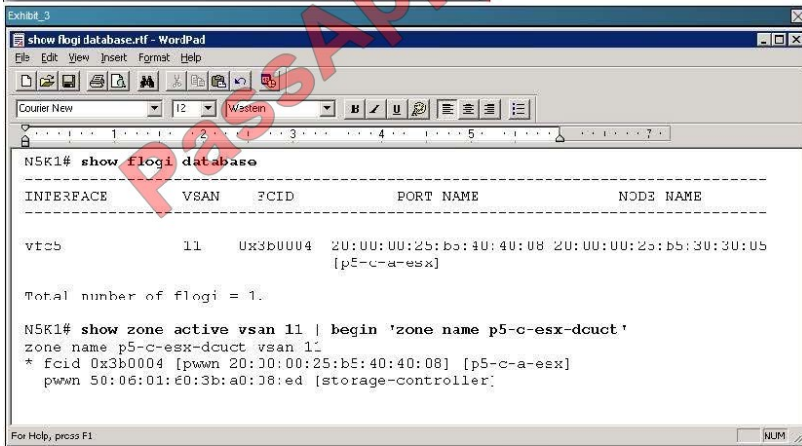
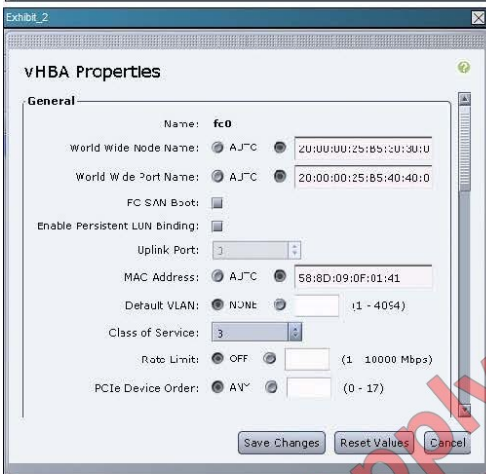
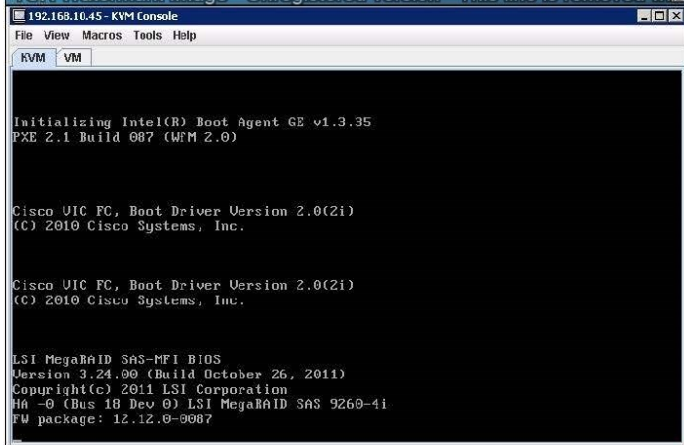
The customer is a government agency with an information security policy prohibiting remote access into its network. It has provided a topology, command output from the Nexus 5548, and screenshots from the Cisco Integrated Management Controller of symptoms for you to troubleshoot.

Topology



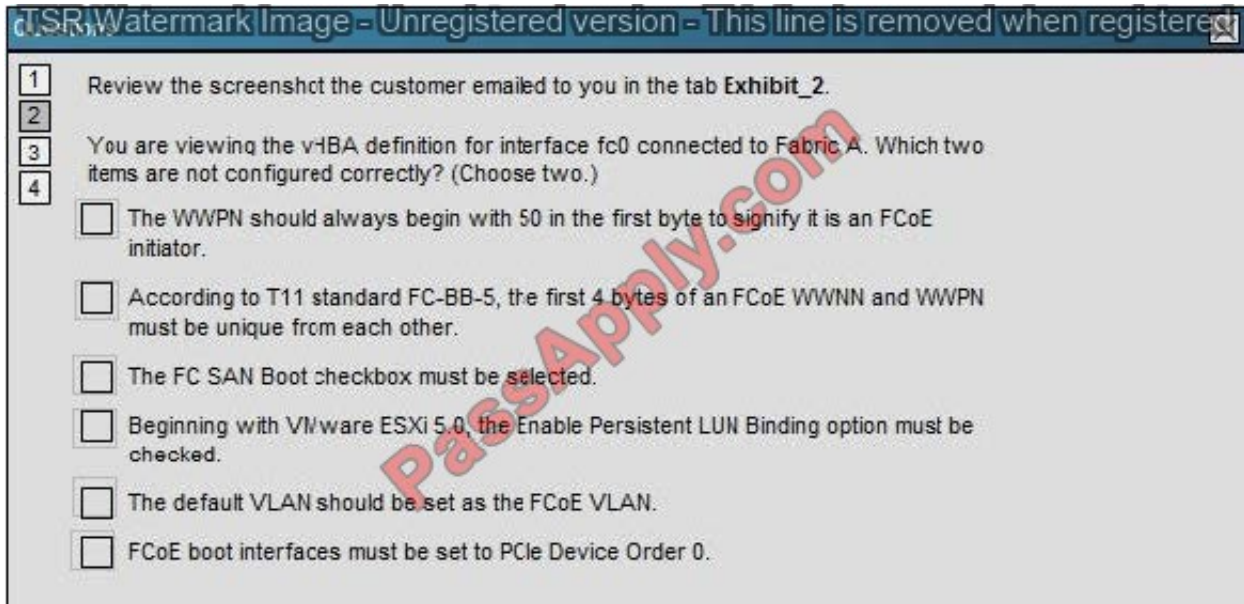


Watermark Image - Unregistered version - This line is removed when registered

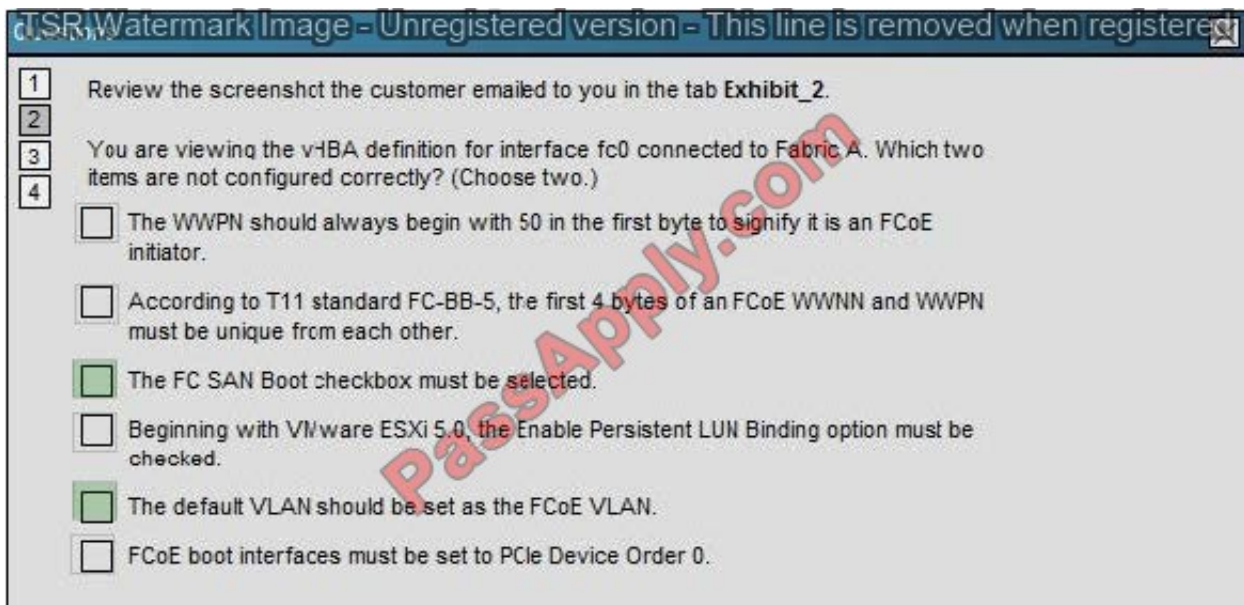




Hot Area:



Correct Answer:



QUESTION 5

A customer is trying to boot an operating system that is installed on the eUSB on a Cisco UCS B-Series blade server; however, the boot fails. What is the cause of this failure?

- A. The local disk must be the first device in the boot order.
- B. eUSB is not a supported boot device.
- C. eUSB support is available only on the Cisco UCS C-Series rack server.



D. eUSB is not the first device in the boot order for the server.

Correct Answer: D

[Latest 300-180 Dumps](#)

[300-180 Study Guide](#)

[300-180 Braindumps](#)



To Read the [Whole Q&As](#), please purchase the [Complete Version](#) from [Our website](#).

Try our product !

100% Guaranteed Success
100% Money Back Guarantee
365 Days Free Update
Instant Download After Purchase
24x7 Customer Support
Average 99.9% Success Rate
More than 800,000 Satisfied Customers Worldwide
Multi-Platform capabilities - [Windows](#), [Mac](#), [Android](#), [iPhone](#), [iPod](#), [iPad](#), [Kindle](#)

We provide exam PDF and VCE of Cisco, Microsoft, IBM, CompTIA, Oracle and other IT Certifications. You can view Vendor list of All Certification Exams offered:

<https://www.passapply.com/allproducts>

Need Help

Please provide as much detail as possible so we can best assist you.
To update a previously submitted ticket:



 <p>One Year Free Update Free update is available within One Year after your purchase. After One Year, you will get 50% discounts for updating. And we are proud to boast a 24/7 efficient Customer Support system via Email.</p>	 <p>Money Back Guarantee To ensure that you are spending on quality products, we provide 100% money back guarantee for 30 days from the date of purchase.</p>	 <p>Security & Privacy We respect customer privacy. We use McAfee's security service to provide you with utmost security for your personal information & peace of mind.</p>
---	---	--

Any charges made through this site will appear as Global Simulators Limited.
All trademarks are the property of their respective owners.
Copyright © passapply, All Rights Reserved.