



300-075^{Q&As}

Implementing Cisco IP Telephony and Video

Pass Cisco 300-075 Exam with 100% Guarantee

Free Download Real Questions & Answers **PDF** and **VCE** file from:

<https://www.passapply.com/300-075.html>

100% Passing Guarantee
100% Money Back Assurance

Following Questions and Answers are all new published by Cisco
Official Exam Center

-  **Instant Download** After Purchase
-  **100% Money Back** Guarantee
-  **365 Days** Free Update
-  **800,000+** Satisfied Customers





QUESTION 1

Which Cisco Unified Mobility setting enables or disables an incoming call to ring the desk phone and the remote destination at the same time?

- A. Mobility Profile
- B. Answer Too Soon timer
- C. Remote Destination Profile
- D. Enable Mobile Connect

Correct Answer: D

QUESTION 2

DRAG DROP

Select and Place:

Click and drag the minimum Cisco Unified SRG configuration steps on the left to the spaces on the right. Not all spaces on the right are used.

- ccm-manager fallback-mgcp
- call-manager-fallback
- application
- ip source-address 10.5.1.1 port 2000
- service alternate default
- max-ephones 3
- max-dn 6
- limit-dn 7965 2
- keepalive 20

Four empty yellow rectangular boxes for drag-and-drop configuration steps.

Correct Answer:



TSR Watermark Image - Unregistered version - This line is removed when registered
Click and drag the minimum Cisco Unified SRX configuration steps on the left to the spaces on the right. Not all spaces on the right are used.

ccm-manager fallback-mgcp

application

service alternate default

limit-dn 7965 2

keepalive 20

call-manager-fallback

ip source-address 10.5.1.1 port 2000

max-ephones 3

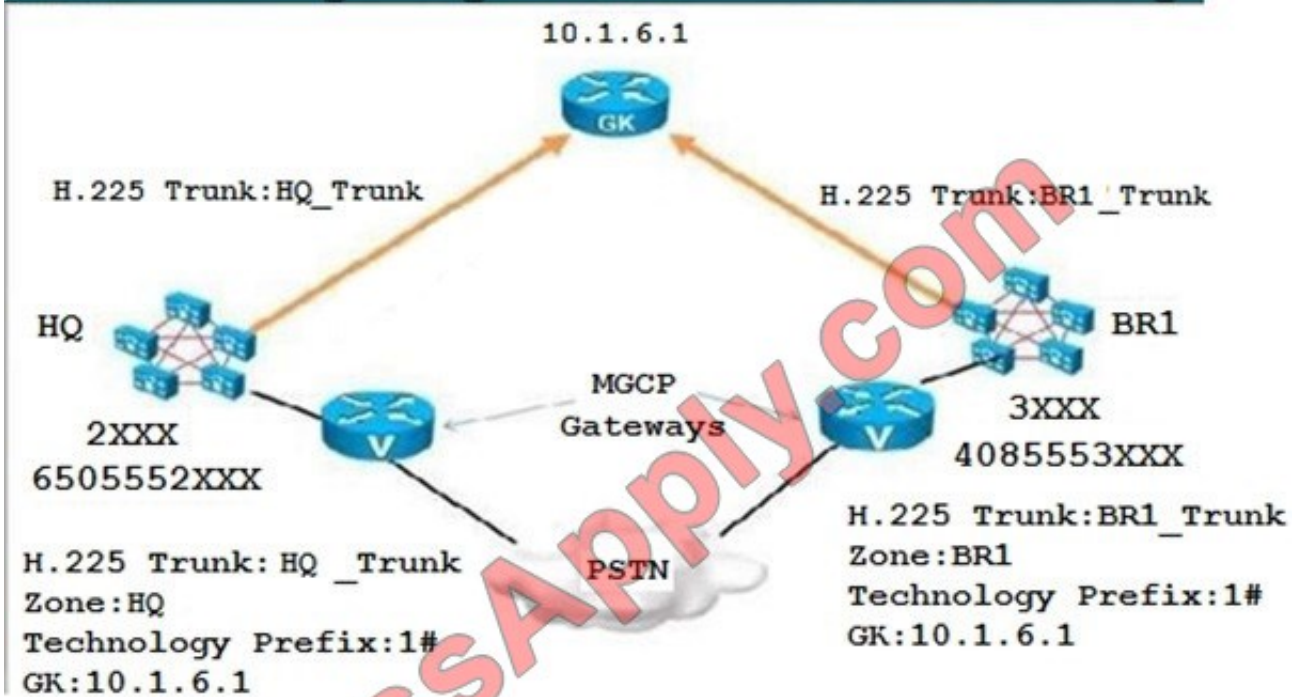
max-dn 6

QUESTION 3

Refer to the exhibit.



TSR Watermark Image - Unregistered version - This line is removed when registered



Gatekeeper Config

```
gatekeeper  
zone local HQ cisco.com 10.1.6.1  
zone local BR1 cisco.com  
zone prefix HQ2...  
zone prefix BR1 3...  
gw-type-prefix 1# default-technology  
no shutdown
```

Assume that NANP is being used and 9 is used for PSTN access code Long distance national calls are preceded with 1.

How should the HQ Cisco Unified Communications Manager be configured for calls to 3XXX to be sent to the gatekeeper at 1 0 1 6 1 with PSTN backups?

- A. Configure a route pattern for 3XXX Assign this route pattern to a route list that points to two route groups. The first route group contains the H 225 trunk. The second route group contains the MGCP gateway with prefix digits 1 408555 for the outgoing called number.
- B. Configure a route pattern for 1#3XXX Assign this route pattern to a route list that points to a route group that lists the H 225 trunk as first choice and the MGCP gateway as a second choice.
- C. Configure a route pattern for 4085543XXX. Assign this route pattern to a route list that points to two route groups. The first route group contains the H 226 trunk. The second route group contains MGCP gateway.
- D. Configure a route pattern for 3XXX Assign this route pattern to a route list that points to two route groups. The first route group contains the H 225 trunk. The second route group contains MGCP gateway with prefix digits 91 408554 for the called number.

Correct Answer: A



QUESTION 4

Which two options for a Device Mobility-enabled IP phone are true? (Choose two.)

- A. The phone configuration is not modified.
- B. The roaming-sensitive parameters of the current (that is, the roaming) device pool are applied.
- C. The user-specific settings determine which location-specific settings are downloaded from the Cisco Unified Communications Manager device pool.
- D. If the DMGs are the same, the Device Mobility-related settings are also applied.

Correct Answer: BD

QUESTION 5

Scenario:

There are two call control systems in this item.

The Cisco UCM is controlling the DX650, the Cisco Jabber for Windows Client, and the 7965 and 9971 Video IP Phones.

The Cisco VCS and TMS control the Cisco TelePresence Conductor, the Cisco TelePresence MCU, and the Cisco Jabber TelePresence for Windows.

DNS Server:

```
TSR Watermark Image - Unregistered version - This line is removed when registered
DNS Servers
ip dns server
ip host_cisco-uds._tcp.hq.cisco.com srv 1 1 8443 10.1.5.15
ip host_cisco-uds._tcp.hq.cisco.com srv 1 1 8443 10.1.5.16
ip host pub10x-hq.collab10x.cisco.com 10.1.5.15
ip host pub10x-hq.collab10x.cisco.com 10.1.5.16
ip host sub10x-hq.hq.collab10x.cisco.com 10.1.5.15
ip host sub10x-hq.hq.collab10x.cisco.com 10.1.5.16
ip host hq.cisco.com 10.1.5.1
```

Device Pool:



TSR Watermark Image - Unregistered version - This line is removed when registered

Status

i 3 records found

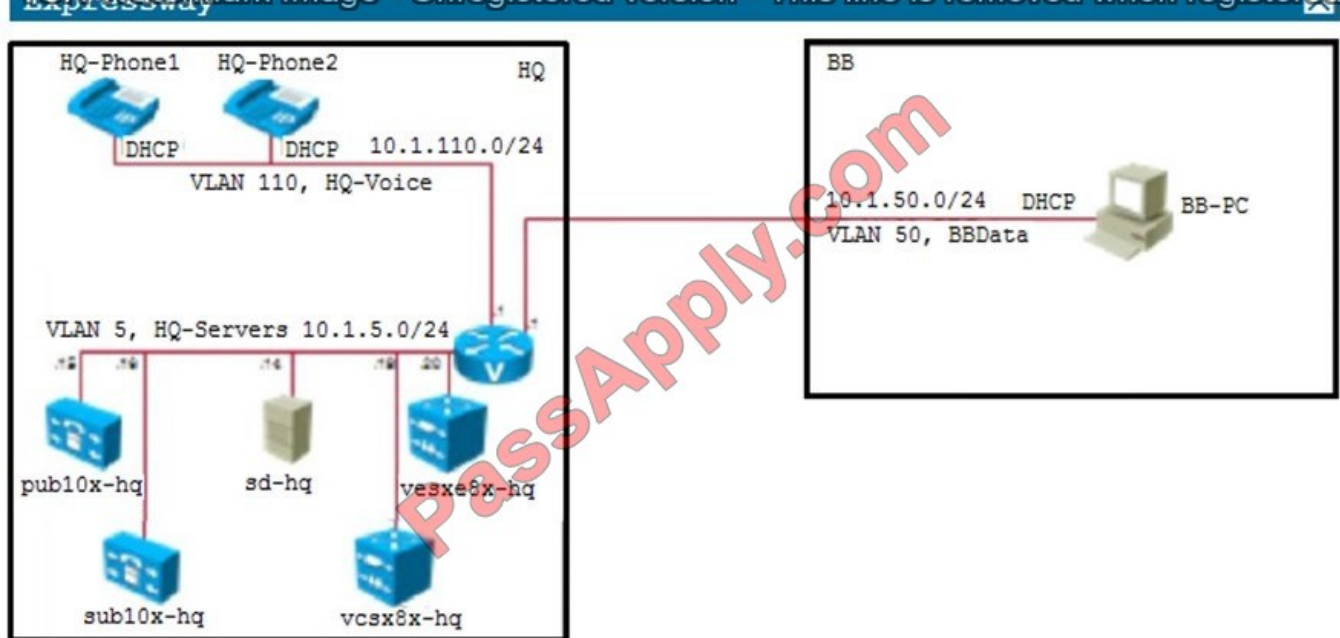
Device Pool (1-3 of 3)

Find Device Pool where begins with Find

<input type="checkbox"/>	Name ^	Cisco Unified CM Group	Region	Date/Time
<input type="checkbox"/>	Default	Default	Default	CMLocal
<input type="checkbox"/>	Default	Default	Default	CMLocal
<input type="checkbox"/>	GSM	Default	GSM	CMLocal

Expressway:

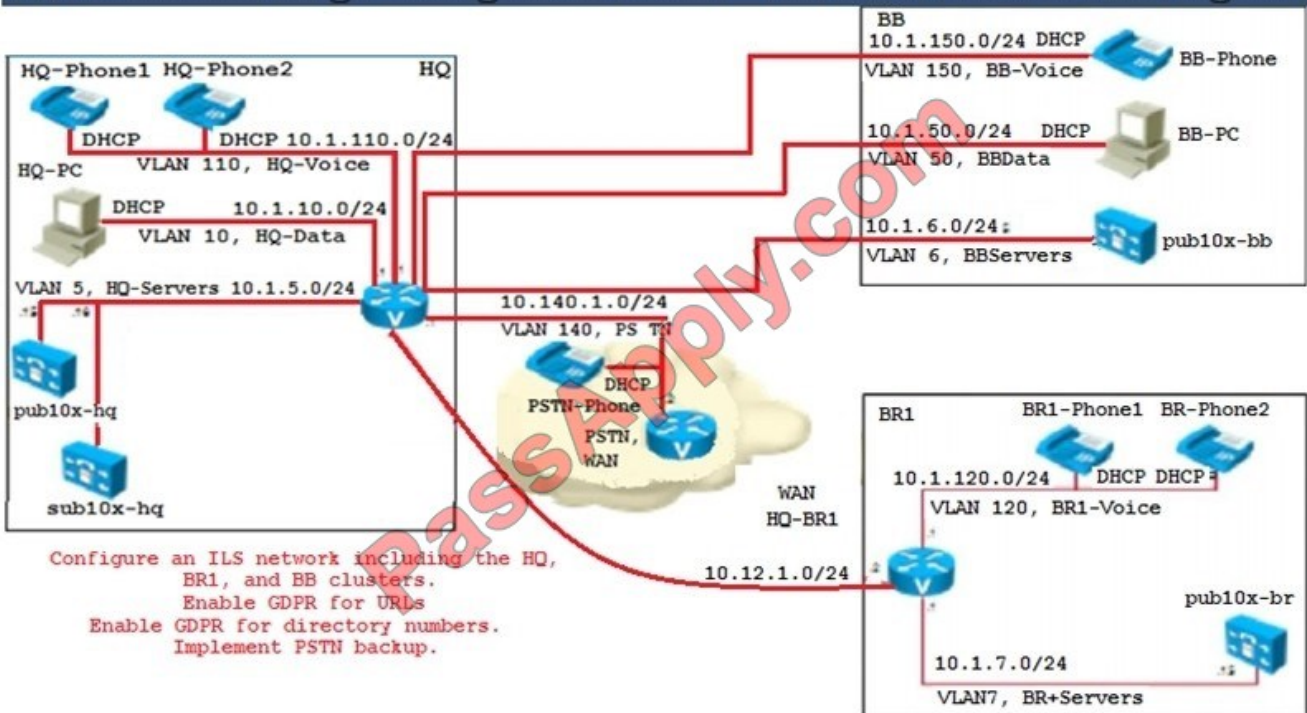
TSR Watermark Image - Unregistered version - This line is removed when registered



ILS:



TSR Watermark Image - Unregistered version - This line is removed when registered



Locations:

TSR Watermark Image - Unregistered version - This line is removed when registered

Locations (1 - 3 of 3)

Find Locations where Location begins with Find Clear Filter

<input type="checkbox"/>	
<input type="checkbox"/>	Hub_None
<input type="checkbox"/>	Phantom
<input type="checkbox"/>	Shadow

MRA:

TSR Watermark Image - Unregistered version - This line is removed when registered
MRA

```
ip host collab-edge._tls.hq.cisco.com SRV 1 1 8443 vcsxe8x-
hq.hq.collab10x.cisco.com
ip host vcsxe8x-hq.hq.collab10x.cisco.com 10.1.5.20
```

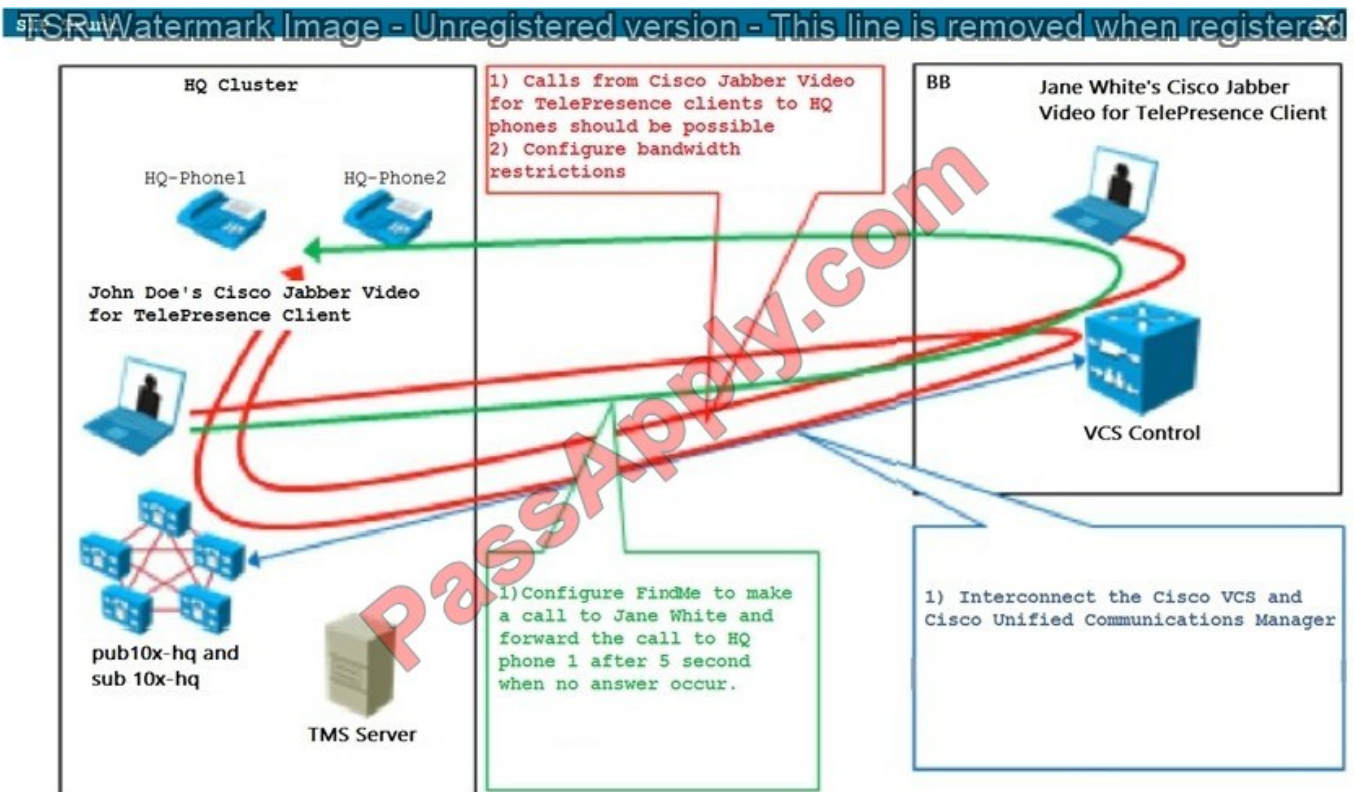
Speed Dial:



SR Watermark Image - Unregistered version - This line is removed when registered

Phone	Speed Dial Button	Speed Dial Destination
HQ phone 1	1	hq2@cisco.lab
HQ phone 1	2	br1@cisco.lab
HQ phone 1	3	bb@cisco.lab
HQ phone 2	1	hq1@cisco.lab
HQ phone 2	2	br1@cisco.lab
HQ phone 2	2	br1@cisco.lab
HQ phone 2	3	bb@cisco.lab
HQ phone 1	1	hq1@cisco.lab
HQ phone 1	2	hq2@cisco.lab
HQ phone 1	3	bb@cisco.lab
BB phone	1	hq1@cisco.lab
BB phone	2	hq2@cisco.lab

SIP Trunk:



The intercluster URI call routing no longer allows calls between sites. What is the reason why this would happen?

- A. Wrong SIP domain configured.
- B. User is not associated with the device.



C. IP or DNS name resolution issue.

D. No SIP route patterns for cisco.lab exist.

Correct Answer: C

[300-075 VCE Dumps](#)

[300-075 Exam Questions](#)

[300-075 Braindumps](#)



To Read the [Whole Q&As](#), please purchase the [Complete Version](#) from [Our website](#).

Try our product !

100% Guaranteed Success
100% Money Back Guarantee
365 Days Free Update
Instant Download After Purchase
24x7 Customer Support
Average 99.9% Success Rate
More than 800,000 Satisfied Customers Worldwide
Multi-Platform capabilities - [Windows](#), [Mac](#), [Android](#), [iPhone](#), [iPod](#), [iPad](#), [Kindle](#)

We provide exam PDF and VCE of Cisco, Microsoft, IBM, CompTIA, Oracle and other IT Certifications. You can view Vendor list of All Certification Exams offered:

<https://www.passapply.com/allproducts>

Need Help

Please provide as much detail as possible so we can best assist you.
To update a previously submitted ticket:



 <p>One Year Free Update Free update is available within One Year after your purchase. After One Year, you will get 50% discounts for updating. And we are proud to boast a 24/7 efficient Customer Support system via Email.</p>	 <p>Money Back Guarantee To ensure that you are spending on quality products, we provide 100% money back guarantee for 30 days from the date of purchase.</p>	 <p>Security & Privacy We respect customer privacy. We use McAfee's security service to provide you with utmost security for your personal information & peace of mind.</p>
---	---	--

Any charges made through this site will appear as Global Simulators Limited.
All trademarks are the property of their respective owners.
Copyright © passapply, All Rights Reserved.