



2V0-631^{Q&As}

VMware Certified Professional 6 – Cloud Management and Automation
Beta Exam

Pass VMware 2V0-631 Exam with 100% Guarantee

Free Download Real Questions & Answers **PDF** and **VCE** file from:

<https://www.passapply.com/2v0-631.html>

100% Passing Guarantee
100% Money Back Assurance

Following Questions and Answers are all new published by VMware
Official Exam Center

-  **Instant Download** After Purchase
-  **100% Money Back** Guarantee
-  **365 Days** Free Update
-  **800,000+** Satisfied Customers



QUESTION 1

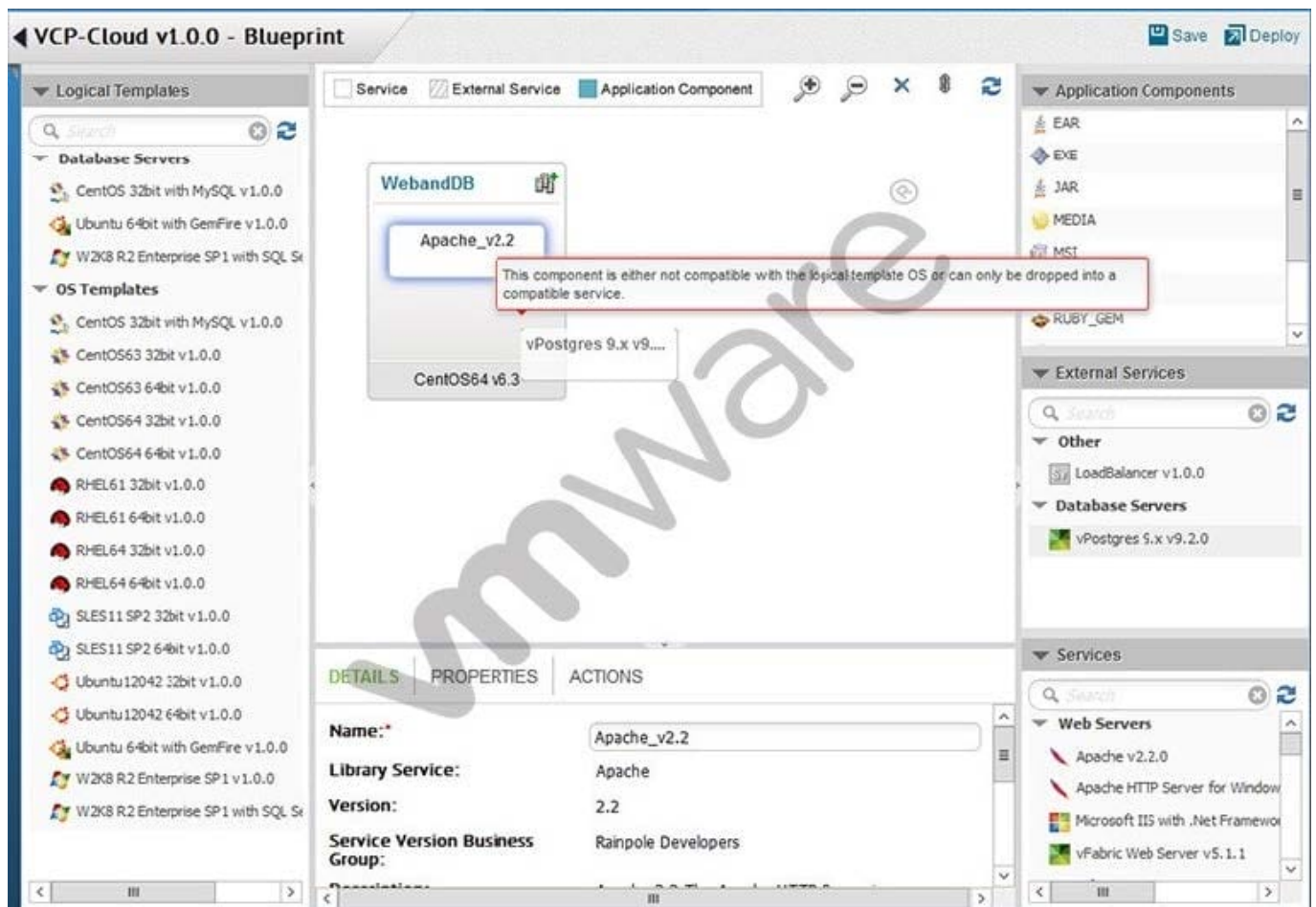
Which three are valid infrastructure costs that can be configured by editing Cost Drivers in vRealize Business Standard? (Choose three.)

- A. Operating System Licensing
- B. Storage (per GB)
- C. Network (per switch)
- D. Hardware Maintenance (per month)
- E. Memory (per GB)

Correct Answer: ABD

QUESTION 2

Refer to the Exhibit.



While building an application blueprint, the administrator cannot add a vPostgres database service to the new operating



system, as shown in the exhibit.

What is needed to resolve this?

- A. Drag and drop vPostgres from the Services menu onto the new operating system.
- B. Delete the current operating system and deploy a new Database Server that includes vPostgres.
- C. Drag and drop a vPostgres Application Component to join the existing operating system and vPostgres objects.
- D. Add an External Service Instance Profile to the Deployment Environment.

Correct Answer: A

QUESTION 3

After successfully creating a service blueprint, which two steps must be completed to allow the newly created service blueprint to be available for use? (Choose two.)

- A. From the Service Blueprints list, highlight the new Service Blueprint and select Publish.
- B. From the Catalog Management Services list, highlight the new Service Blueprint and select Publish.
- C. From the Catalog Items list, configure the Service Blueprint to be part of a Service.
- D. From the Catalog Items list, edit the Service Blueprint and change its Status to Active.

Correct Answer: AC

QUESTION 4

After registering the vCloud Connector plug-in with vCenter Server, an administrator discovers that the private cloud does not appear in the plug-in interface.

What step could be taken to resolve this issue?

- A. Add the vCenter Server information for the private cloud.
- B. Reboot the local node to reload the private cloud data.
- C. Restart the vSphere Client to enable the vCloud Connector plug-in.
- D. Add the local node information for the private cloud.

Correct Answer: D

QUESTION 5

Which two administrator types will be set up during the configuration of a new tenant? (Choose two.)

- A. Tenant Administrators



B. Infrastructure Administrators

C. Business Group Administrators

D. Approval Administrators

Correct Answer: AB

[2V0-631 PDF Dumps](#)

[2V0-631 Practice Test](#)

[2V0-631 Braindumps](#)