



2V0-621D^{Q&As}

VMware Certified Professional 6 – Data Center Virtualization Delta

Pass VMware 2V0-621D Exam with 100% Guarantee

Free Download Real Questions & Answers **PDF** and **VCE** file from:

<https://www.passapply.com/2v0-621d.html>

100% Passing Guarantee
100% Money Back Assurance

Following Questions and Answers are all new published by VMware
Official Exam Center

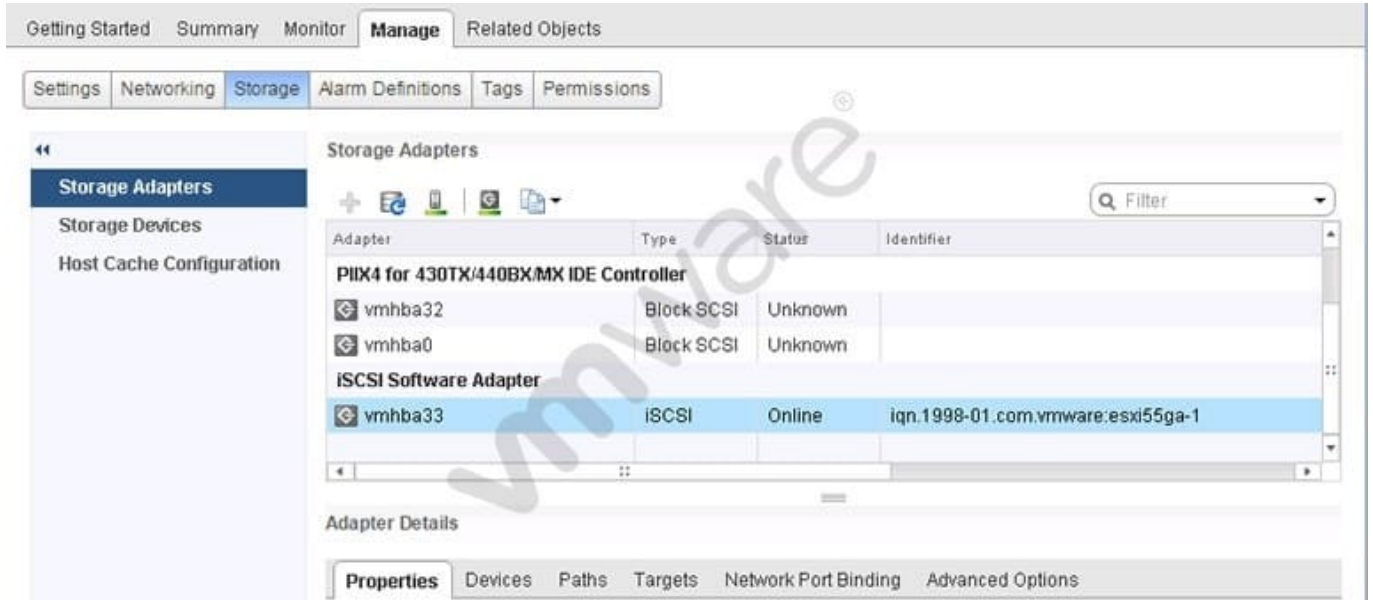
-  **Instant Download** After Purchase
-  **100% Money Back** Guarantee
-  **365 Days** Free Update
-  **800,000+** Satisfied Customers





QUESTION 1

Refer to the Exhibit.



An administrator would like to add Challenge Handshake Authentication Protocol (CHAP) to an iSCSI adapter. The administrator accesses the Storage Adapters menu as shown in the Exhibit. In which tab can the task be accomplished?

- A. Properties
- B. Advanced Options
- C. Targets
- D. Devices

Correct Answer: A

Reference: <http://www.vmwarebits.com/content/install-and-configure-openfiler-esxi-shared-storage-nfs-and-iscsi>

QUESTION 2

An administrator wants to clone a virtual machine using the vSphere Client. Which explains why the Clone option is missing?

- A. The vSphere Client is directly connected to the ESXi host.
- B. The virtual machine is configured with a thin-provisioned virtual disk.
- C. The virtual machine is configured with outdated Virtual Hardware.
- D. Cloning can only be performed with vRealize Orchestrator.



Correct Answer: A

The Clone option is missing because vSphere client is directly connected to the ESXi host. To enable the option, you have to connect it through vcenter server because cloning is a vCenter Server feature. You need install vCenter server on one of the Windows Server and connect vCenter Server via vSphere client and create cluster, add host after that you will see cloning and template option and much more

QUESTION 3

An administrator is able to manage an ESXi 6.x host connected to vCenter Server using the vSphere Web Client but is unable to connect to the host directly. Which action should the administrator take to correct this behavior?

- A. Restart management agents on the ESXi host.
- B. Disable Lockdown Mode on the ESXi host through vCenter Server.
- C. Disable the ESXi firewall with the command `esxcli network firewall unload`.
- D. Reboot the ESXi host.

Correct Answer: B

Disable lockdown mode through the DCUI and then enable it through the vCenter Server instead. The vCenter Server does not keep track of lockdown mode state changes that initiated outside of the vCenter Server itself. Reference: http://kb.vmware.com/selfservice/microsites/search.do?language=en_US&cmd=displayKC&externalId=2040768

QUESTION 4

When attempting to connect to a vCenter Server, an administrator observes the following at the top of the vSphere Web Client:

Could not connect to one or more vCenter Server Systems:

<https://vCenter.corp.com:443/sdk>

What three reasons could be preventing the vSphere Web Client from communicating with this vCenter Server? (Choose three.)

- A. The vCenter Server machine is not responding via the network.
- B. An incorrect entry for this vCenter Server exists in the Single Sign-On service.
- C. The SSL certificates do not match the FQDN address for the server.
- D. The Platform Services Controller is external to this vCenter Server.
- E. The DNS entry for the vCenter Server is incorrect.

Correct Answer: ABC

Reference: <https://communities.vmware.com/message/2265668>



QUESTION 5

An administrator is troubleshooting a CPU performance issue for a virtual machine. Which three esxtop counters may demonstrate CPU contention? (Choose three.)

- A. %RDY
- B. %RUN
- C. %MLMTD
- D. %WAIT
- E. %CSTP

Correct Answer: ACE

Reference: <https://communities.vmware.com/docs/DOC-9279>

[2V0-621D VCE Dumps](#)

[2V0-621D Exam Questions](#)

[2V0-621D Braindumps](#)