



# 2V0-620<sup>Q&As</sup>

vSphere 6 Foundations Beta

## Pass VMware 2V0-620 Exam with 100% Guarantee

Free Download Real Questions & Answers **PDF** and **VCE** file from:

<https://www.passapply.com/2v0-620.html>

100% Passing Guarantee  
100% Money Back Assurance

Following Questions and Answers are all new published by VMware  
Official Exam Center

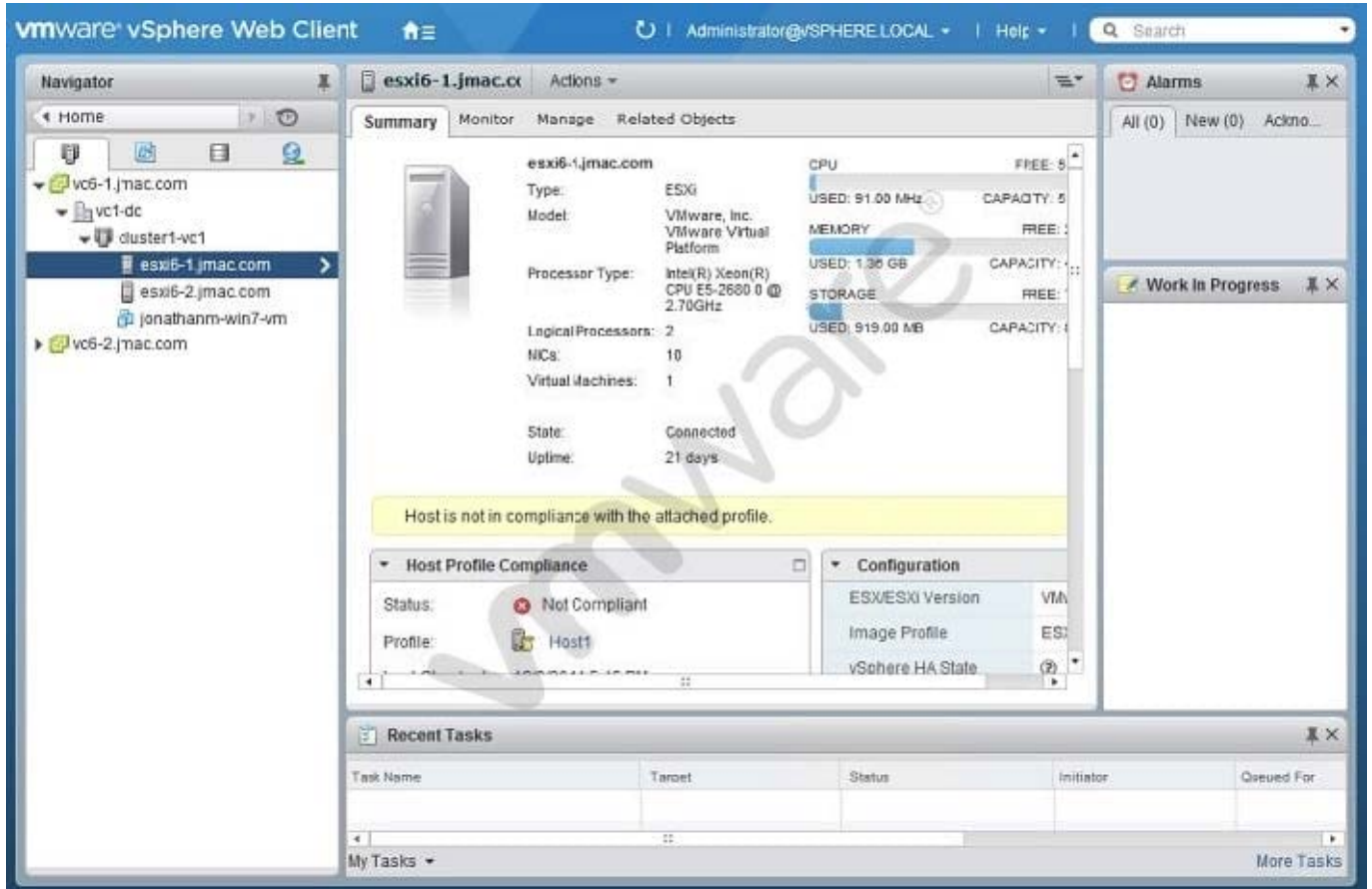
-  **Instant Download** After Purchase
-  **100% Money Back** Guarantee
-  **365 Days** Free Update
-  **800,000+** Satisfied Customers





### QUESTION 1

Refer to the Exhibit.



An administrator logs into the vSphere Web Client and sees the warning shown in the Exhibit. During a change control window, the warning was addressed.

What should be done to verify that the host is no longer showing the warning?

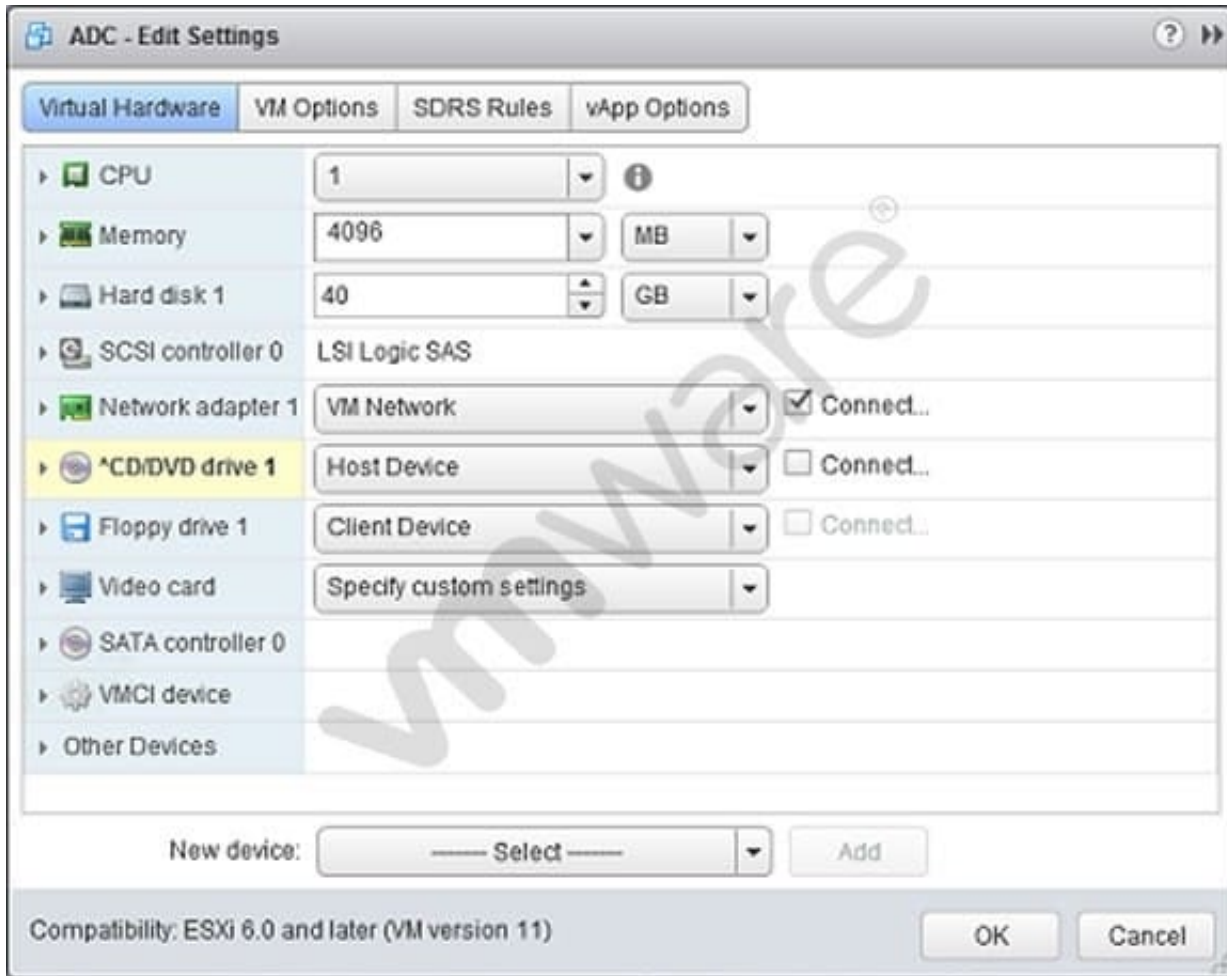
- A. Run a Remediate host operation.
- B. Recheck the compliance of the host.
- C. Restart the host to get rid of the warning.
- D. Install VMware tools to clear the warning.

Correct Answer: B

To make sure the host is no longer showing the warning, recheck the compliance of the host.

### QUESTION 2

Refer to the Exhibit.



An administrator is installing Windows into a virtual machine. The DVD has been mounted on the Host and configured for the virtual machine as shown in the Exhibit.

Based on the exhibit, when the virtual machine is booted, why would it attempt to search for a PXE server?

- A. The CD/DVD device is not connected.
- B. The ISO is in the incorrect storage location.
- C. The OS minimum requirements have not been met.
- D. The CD/DVD device is not set to Client Device.

Correct Answer: A

It looks like the CD/DVD device is not connected. Restart the machine and recheck again. When the system doesn't find CD/DVD drive, it looks for PXE server to boot.

### QUESTION 3

An organization has an ESXi 6.x host that contains two resource pools. The host is being relocated to a DRS cluster.

What two actions can be taken to integrate the host into the cluster, and what would happen to the existing ESXi



resource pool hierarchy as a result? (Choose two.)

- A. Place all of the host's virtual machines into the DRS cluster root resource pool. The resource pools present on the host will be deleted.
- B. Create a resource pool for the ESXi host's virtual machines and resource pools. The resource pools present on the host will be deleted.
- C. Place all of the host's virtual machines into the DRS cluster root resource pool. The resource pools present on the host will be preserved.
- D. Create a resource pool for the ESXi host's virtual machines and resource pools. The resource pools present on the host will be preserved.

Correct Answer: AD

First, place all of the host's virtual machines into DRS cluster root resources pool. The resource pool present on the host will be deleted. Create a resource pool for the ESXi host's virtual machines and resource pools. It will be preserved. Reference: <https://communities.vmware.com/thread/473862?start=0andtstart=0>

---

#### QUESTION 4

An administrator is attempting to migrate a large Hadoop virtual machine using vMotion. The administrator notices a delay when the machine is quiesced. The Hadoop virtual machine is processing many transactions a second to an in-memory database.

Which two actions would help reduce the amount of time needed to perform a vMotion on this virtual machine? (Choose two.)

- A. Use multiple NICs for the vMotion vmkernel port.
- B. Use a 10Gbps Network card for the vMotion vmkernel port.
- C. Add an additional management network to help transmit the data quicker.
- D. Disable Fault Tolerance before performing the vMotion.

Correct Answer: AB

Use multiple NICs for the vmotion vmkernel port and a 10 Gbps network card for vMotion vmkernel port. Reference: <http://www.yellow-bricks.com/2011/09/17/multiple-nic-vmotion-in-vsphere-5/>

---

#### QUESTION 5

When configuring vSphere Replication for a virtual machine, what is the lowest Recovery Point Objective (RPO) that can be selected?

- A. 1 min
- B. 5 min
- C. 10 min



D. 15min

Correct Answer: D

The available range is from 15 minutes to 24 hours.

Reference: [https://pubs.vmware.com/vsphere-51/index.jsp?topic=%](https://pubs.vmware.com/vsphere-51/index.jsp?topic=%2Fcom.vmware.vsphere.replication_admin.doc%2FGUID-C249300C-2BC0-4128-88B5046C3DE6BC5B.html)

[2Fcom.vmware.vsphere.replication\\_admin.doc%2FGUID-C249300C-2BC0-4128-88B5046C3DE6BC5B.html](https://pubs.vmware.com/vsphere-51/index.jsp?topic=%2Fcom.vmware.vsphere.replication_admin.doc%2FGUID-C249300C-2BC0-4128-88B5046C3DE6BC5B.html)

[Latest 2V0-620 Dumps](#)

[2V0-620 PDF Dumps](#)

[2V0-620 Practice Test](#)