



200-310^{Q&As}

Designing for Cisco Internetwork Solutions

Pass Cisco 200-310 Exam with 100% Guarantee

Free Download Real Questions & Answers **PDF** and **VCE** file from:

<https://www.passapply.com/200-310.html>

100% Passing Guarantee
100% Money Back Assurance

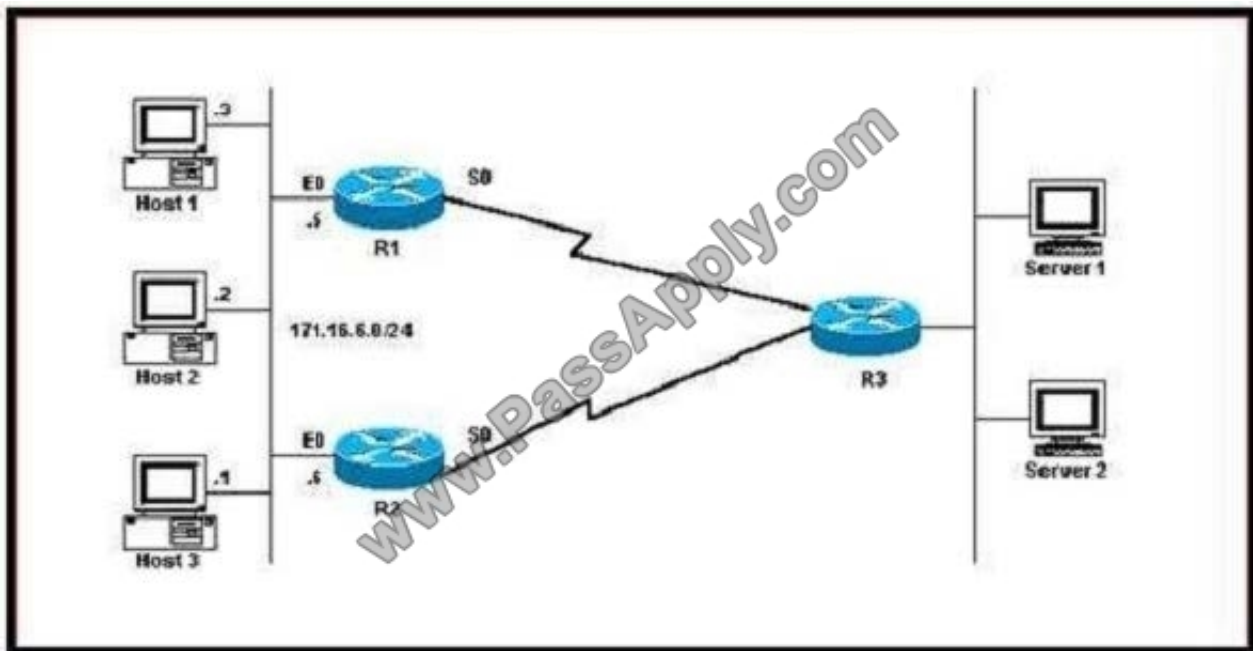
Following Questions and Answers are all new published by Cisco
Official Exam Center

-  **Instant Download** After Purchase
-  **100% Money Back** Guarantee
-  **365 Days** Free Update
-  **800,000+** Satisfied Customers





QUESTION 1



Refer to the exhibit. Which configuration can be used to implement FHRP protocol and load balancing at the same time?

A. R1 Interface Ethernet0 ip address 171.16.6.5

255.255.255.0 standby 1 preempt

standby 1 ip 171.16.6.100

standby 1 track Serial0

standby 2 preempt

standby 2 ip 171.16.6.200

standby 2 track serial 0

standby 2 priority 95

!

!

R2

interface Ethernet0

ip address 171.16.6.6 255.255.255.0

standby 1 preempt



standby 1 ip 171.16.6.100

standby 1 track Serial0

standby 1 priority 95

standby 2 preempt

standby 2 ip 171.16.6.200

standby 2 track serial 0

B. R1 Interface Ethernet0 ip address 171.16.6.5

255.255.255.0 standby 1 preempt

standby 1 ip 171.16.6.100

standby 1 track Serial0

standby 1 priority 95

!

!

R2

interface Ethernet0

ip address 171.16.6.6

255.255.255.0 standby 1 preempt

standby 1 ip 171.16.6.100

standby 1 track Serial0

standby 1 priority 95

C. R1 Interface Ethernet0 ip address 171.16.6.5

255.255.255.0 standby 1 preempt

standby 1 ip 171.16.6.100 standby 1 track Serial0 standby 1 priority 95 standby 2 preempt

standby 2 ip 171.16.6.200 standby 2 track serial 0 standby 2 priority 95

!

!

R2

interface Ethernet0

ip address 171.16.6.6



```
255.255.255.0 standby 1 preempt
standby 1 ip 171.16.6.100 standby 1 track Serial0 standby 2 preempt
standby 2 ip 171.16.6.200 standby 2 track serial 0
D. R1 Interface Ethernet0 ip address 171.16.6.5
255.255.255.0 standby 1 preempt
standby 1 ip 171.16.6.100 standby 1 track Serial0 standby 1 priority 95
!
!
R2
interface Ethernet0
ip address 171.16.6.6
255.255.255.0 standby 1 preempt
standby 1 ip 171.16.6.100
```

Correct Answer: A

QUESTION 2

A corporation has asked for a new design of a branch office consisting of 50 workers and 30 phones that need continual connectivity. Which two items can be included in the design to offer high availability? (Choose two.)

- A. backup configuration of branch router
- B. backup configuration of corporate router
- C. single uplink to WAN
- D. dual uplinks to WAN
- E. always be on the most up-to-date router code

Correct Answer: AD

QUESTION 3

Which two encryption transforms will be used by both ESP and AH for authentication?

- A. HMAC-MD5 or Hash Message Authentication Code-Secure Hash Algorithm-1(HMAC-SHA-1)
- B. DES or 3DES



- C. DES or Hash Message Authentication Code-Message Digest 5 (HMAC-MD5)
- D. 3DES or MD5

Correct Answer: A

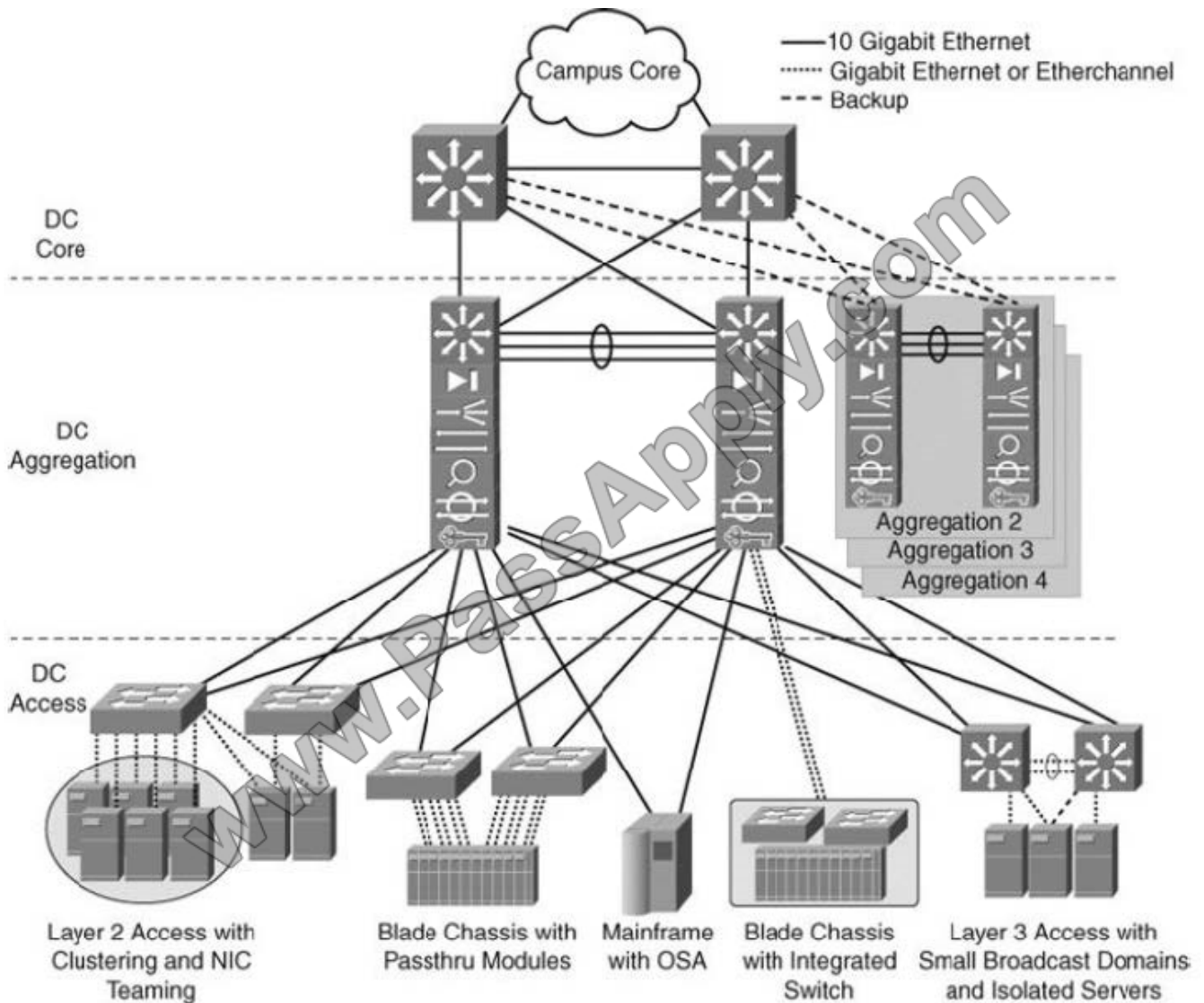
QUESTION 4

Which two statements about designing the Data Center Access layer are correct? (Choose two.)

- A. Multiport NIC servers should each have their own IP address.
- B. Layer 3 connectivity should never be used in the access layer.
- C. Layer 2 connectivity is primarily implemented in the access layer.
- D. Multiport NIC servers should never be used in the access layer.
- E. Layer 2 clustering implementation requires servers to be Layer 2 adjacent.

Correct Answer: CE

User access is primarily layer 2 in nature, layer 2 clustering is possible only in layer 2 Here is the Explanation: from the Cisco press CCDA certification guide Figure 4-8. Enterprise Data Center Infrastructure Overview



Defining the DC Access Layer The data center access layer's main purpose is to provide Layer 2 and Layer 3 physical port density for various servers in the data center. In addition, data center access layer switches provide high-performance, low-latency switching and can support a mix of oversubscription requirements. Both Layer 2 and Layer 3 access (also called routed access) designs are available, but most data center access layers are built using Layer 2 connectivity. The Layer 2 access design uses VLAN trunks upstream, which allows data center aggregation services to be shared across the same VLAN and across multiple switches. Other advantages of Layer 2 access are support for NIC teaming and server clustering that requires network connections to be Layer 2 adjacent or on the same VLAN with one another.

CCDA 640-864 Official Certification Guide Fourth Edition, Chapter 4

QUESTION 5

When considering the three VoIP design models - single site, centralized multisite, and distributed multisite - which question below would help to eliminate one of the options?

A. Will the switches be required to provide inline power?



- B. Will users need to make offsite calls, beyond the enterprise?
- C. Will users require applications such as voice mail and interactive voice response?
- D. Are there users whose only enterprise access is via a QoS-enabled WAN?

Correct Answer: D

[Latest 200-310 Dumps](#)

[200-310 PDF Dumps](#)

[200-310 Practice Test](#)



To Read the [Whole Q&As](#), please purchase the [Complete Version](#) from [Our website](#).

Try our product !

100% Guaranteed Success
100% Money Back Guarantee
365 Days Free Update
Instant Download After Purchase
24x7 Customer Support
Average 99.9% Success Rate
More than 800,000 Satisfied Customers Worldwide
Multi-Platform capabilities - [Windows](#), [Mac](#), [Android](#), [iPhone](#), [iPod](#), [iPad](#), [Kindle](#)

We provide exam PDF and VCE of Cisco, Microsoft, IBM, CompTIA, Oracle and other IT Certifications. You can view Vendor list of All Certification Exams offered:

<https://www.passapply.com/allproducts>

Need Help

Please provide as much detail as possible so we can best assist you.
To update a previously submitted ticket:



 <p>One Year Free Update Free update is available within One Year after your purchase. After One Year, you will get 50% discounts for updating. And we are proud to boast a 24/7 efficient Customer Support system via Email.</p>	 <p>Money Back Guarantee To ensure that you are spending on quality products, we provide 100% money back guarantee for 30 days from the date of purchase.</p>	 <p>Security & Privacy We respect customer privacy. We use McAfee's security service to provide you with utmost security for your personal information & peace of mind.</p>
---	---	--

Any charges made through this site will appear as Global Simulators Limited.
All trademarks are the property of their respective owners.
Copyright © passapply, All Rights Reserved.