



200-105^{Q&As}

Interconnecting Cisco Networking Devices Part 2 (ICND2)

Pass Cisco 200-105 Exam with 100% Guarantee

Free Download Real Questions & Answers **PDF** and **VCE** file from:

<https://www.passapply.com/200-105.html>

100% Passing Guarantee
100% Money Back Assurance

Following Questions and Answers are all new published by Cisco
Official Exam Center

-  **Instant Download** After Purchase
-  **100% Money Back** Guarantee
-  **365 Days** Free Update
-  **800,000+** Satisfied Customers





QUESTION 1

Which statement about access lists that are applied to an interface is true?

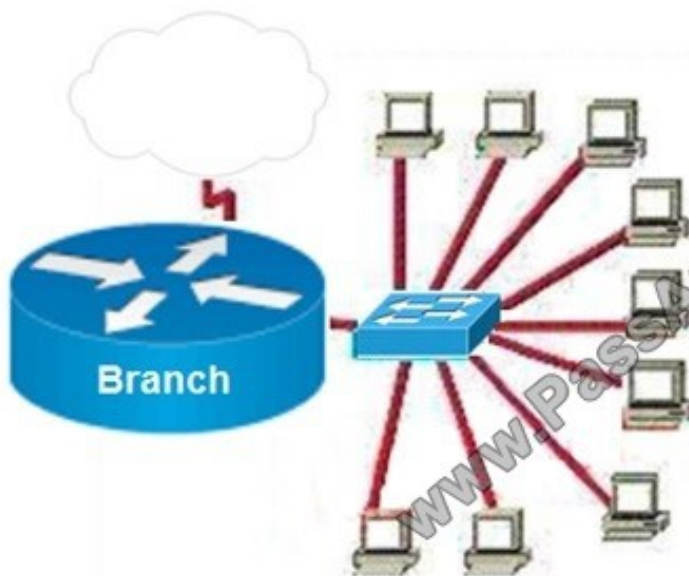
- A. You can place as many access lists as you want on any interface.
- B. You can apply only one access list on any interface.
- C. You can configure one access list, per direction, per Layer 3 protocol.
- D. You can apply multiple access lists with the same protocol or in different directions.

Correct Answer: C

QUESTION 2

A router has been configured to provide the nine users on the branch office LAN with Internet access, as shown in the diagram. It is found that some of the users on the LAN cannot reach the Internet.

Based on the topology and router output shown, which command should be issued on the router to correct the problem?



```
Branch#show interfaces FastEthernet 0
FastEthernet0 is up, line protocol is up
Hardware address is 000c.ce8d.8860
Internet address is 192.168.10.30/30
MTU 1500 bytes, BW 10000 Kbit,
DLY 1000 usec, reliability 255/255,
txload 1/255, rxload 1/255
Encapsulation ARPA, loopback not set
Keepalive set (10sec)
Half-duplex, 10Mb/s, 100BaseTX/FX
(... output omitted...)
```

- A. Branch(config-if)# no shutdown
- B. Branch(config-if)# duplex full
- C. Branch(config-if)# no keepalive
- D. Branch(config-if)# ip address 192.168.10.30 255.255.255.240
- E. Branch(config-if)# bandwidth 100



F. Branch(config-if)# encapsulation 802.3

Correct Answer: D

QUESTION 3

What are three values that must be the same within a sequence of packets for Netflow to consider them a network flow? (Choose three.)

- A. source IP address
- B. source MAC address
- C. egress interface
- D. ingress interface
- E. destination IP address
- F. IP next-hop

Correct Answer: ADE

Each packet that is forwarded within a router or switch is examined for a set of IP packet attributes. These attributes are the IP packet identity or fingerprint of the packet and determine if the packet is unique or similar to other packets. Traditionally, an IP Flow is based on a set of 5 and up to 7 IP packet attributes.

IP Packet attributes used by NetFlow:

IP source address IP destination address Source port Destination port Layer 3 protocol type Class of Service Router or switch interface

All packets with the same source/destination IP address, source/destination ports, protocol interface and class of service are grouped into a flow and then packets and bytes are tallied. This methodology of fingerprinting or determining a flow is scalable because a large amount of network information is condensed into a database of NetFlow information called the NetFlow cache.

Reference: http://www.cisco.com/c/en/us/products/collateral/ios-nx-os-software/ios-netflow/prod_white_paper0900aecd80406232.html

QUESTION 4

Instructions

Enter Cisco IOS commands on device to verify network operation and answer for multiple-choice questions.

THIS TASK DOES NOT REQUIRE DEVICE CONFIGURATION.

Click the device icon to gain access to the console of the router. No console or enable passwords are required.

To access the multiple-choice questions, click the numbered boxes on the left of the top panel.

This task has four multiple-choice questions. Be sure to answer all four questions before clicking the Next button.



Scenario

You are implementing PPP over serial links between R1 router and branch offices. In Phase 1 you must implement and verify PPP and GRE tunnel configurations as mentioned in the topology. In Phase 2 your colleague is expected to do NAT and ISP configurations between R1 and ISP router.

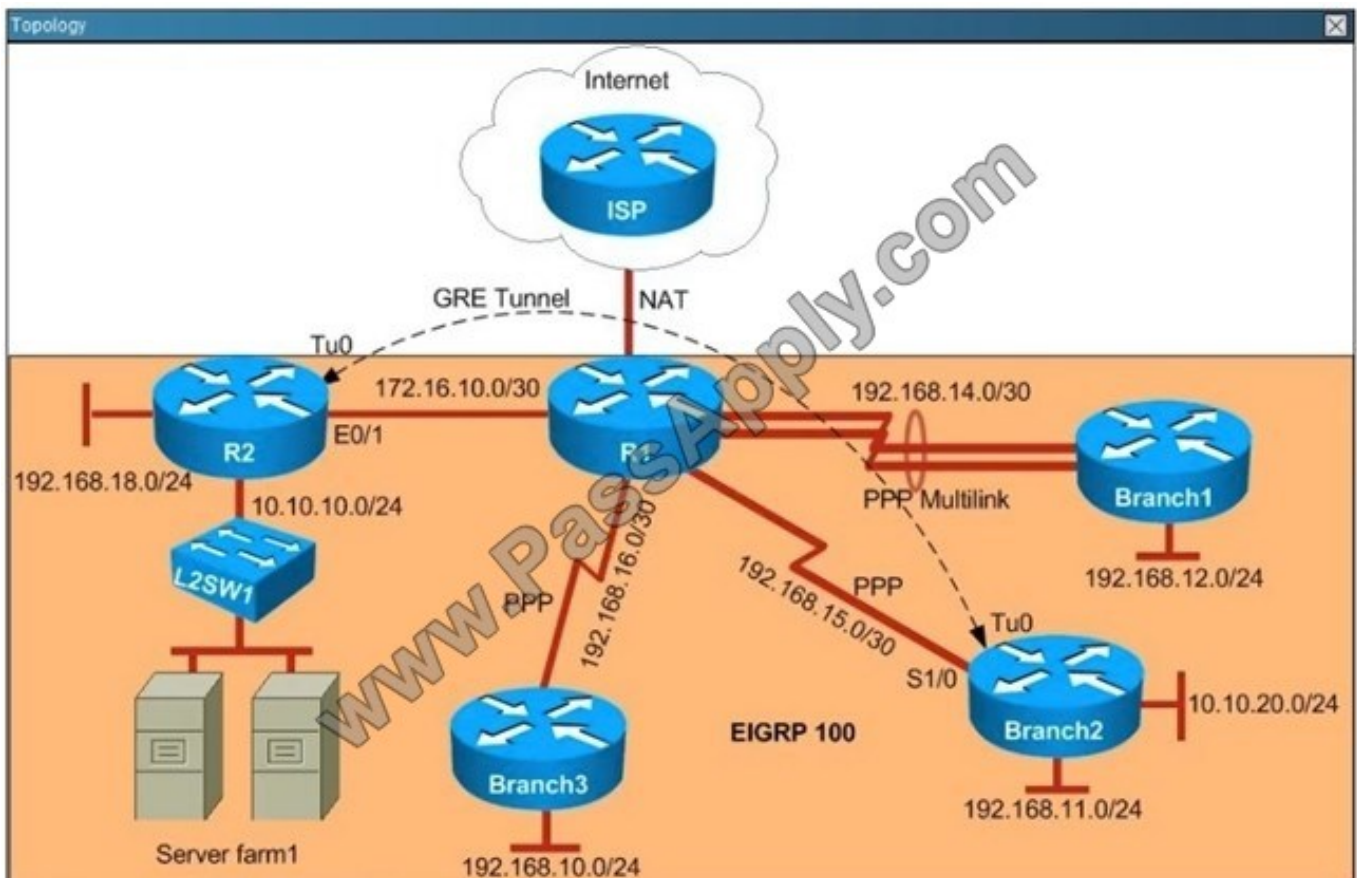
Identify the issues that you encounter during PPP over serial links implementation.

Routers Branch1, Branch2, and Branch3 connect to Router R1 in the main office over serial links.

PPP multilink implementation is recommended between R1 and Branch1 routers.

The GRE tunnel is configured between R2 and Branch2 routers, and traffic between Server farm1 10.10.10.0/24 network and Branch2 LAN 10.10.20.0/24 network, is routed over GRE tunnel using static route.

You have console access on R1, R2, Branch1, Branch2, and Branch3 devices. Use only show commands to troubleshoot the issues.



Why is the Branch2 network 10.10.20.0/24 unable to communicate with the Server farm1 network 10.10.10.0/24 over the GRE tunnel?

- A. The GRE tunnel destination is not configured on the R2 router.
- B. The GRE tunnel destination is not configured on the Branch2 router.
- C. The static route point to the tunnel0 interface that is misconfigured on the Branch2 router.



D. The static route points to the tunnel0 interface that is misconfigured on the R2 router.

Correct Answer: C

The Branch2 network is communicating to the Server farm, which is connected to R2, via GRE Tunnel so we should check the GRE tunnel first to see if it is in "up/up" state with the "show ip interface brief" command on the two routers. On Branch2:

```
Branch2#show ip interface brief
```

Interface	IP-Address	OK?	Method	Status	Protocol
Ethernet0/0	10.10.20.1	YES	manual	up	up
Ethernet0/1	192.168.11.1	YES	manual	up	up
Ethernet0/2	unassigned	YES	unset	administratively down	down
Ethernet0/3	unassigned	YES	unset	administratively down	down
Serial1/0	192.168.15.2	YES	manual	up	up
Serial1/1	unassigned	YES	unset	administratively down	down
Serial1/2	unassigned	YES	unset	administratively down	down
Serial1/3	unassigned	YES	unset	administratively down	down
Tunnel0	192.168.24.2	YES	manual	up	up

On R2:

```
R2#show ip interface brief
```

Interface	IP-Address	OK?	Method	Status	Protocol
Ethernet0/0	172.16.10.2	YES	manual	up	up
Ethernet0/1	10.10.10.1	YES	manual	up	up
Ethernet0/2	192.168.18.1	YES	manual	up	up
Ethernet0/3	unassigned	YES	unset	administratively down	down
Tunnel0	192.168.24.1	YES	manual	up	up

We see interfaces Tunnel0 at two ends are "up/up" which are good so we should check for the routing part on two routers with the "show running-config" command and pay attention to the static routing of each router. On Branch2 we see:

```
Branch2#show running-config
```

```
<output omitted>
```

```
ip route 10.10.10.0 255.255.255.0 192.168.24.10
```

The destination IP address for this static route is not correct. It should be 192.168.24.1 (Tunnel0's IP address of R2), not 192.168.24.10 -> Answer C is correct.

Note: You can use the "show ip route" command to check the routing configuration on each router but if the destination is not reachable (for example: we configure "ip route 10.10.10.0 255.255.255.0 192.168.24.10" on Branch2, but if

192.168.24.10 is unknown then Branch2 router will not display this routing entry in its routing table.

Note: The IP address or configuration may be different in the exam.



QUESTION 5

While troubleshooting a connection problem on a computer, you determined that the computer can ping a specific web server but it cannot connect to TCP port 80 on that server. Which reason for the problem is most likely true?

- A. A VLAN number is incorrect
- B. An ARP table entry is missing
- C. A route is missing
- D. An ACL is blocking the TCP port

Correct Answer: D

[Latest 200-105 Dumps](#)

[200-105 PDF Dumps](#)

[200-105 Braindumps](#)



To Read the [Whole Q&As](#), please purchase the [Complete Version](#) from [Our website](#).

Try our product !

100% Guaranteed Success
100% Money Back Guarantee
365 Days Free Update
Instant Download After Purchase
24x7 Customer Support
Average 99.9% Success Rate
More than 800,000 Satisfied Customers Worldwide
Multi-Platform capabilities - [Windows](#), [Mac](#), [Android](#), [iPhone](#), [iPod](#), [iPad](#), [Kindle](#)

We provide exam PDF and VCE of Cisco, Microsoft, IBM, CompTIA, Oracle and other IT Certifications. You can view Vendor list of All Certification Exams offered:

<https://www.passapply.com/allproducts>

Need Help

Please provide as much detail as possible so we can best assist you.
To update a previously submitted ticket:



 <p>One Year Free Update Free update is available within One Year after your purchase. After One Year, you will get 50% discounts for updating. And we are proud to boast a 24/7 efficient Customer Support system via Email.</p>	 <p>Money Back Guarantee To ensure that you are spending on quality products, we provide 100% money back guarantee for 30 days from the date of purchase.</p>	 <p>Security & Privacy We respect customer privacy. We use McAfee's security service to provide you with utmost security for your personal information & peace of mind.</p>
---	---	--

Any charges made through this site will appear as Global Simulators Limited.
All trademarks are the property of their respective owners.
Copyright © passapply, All Rights Reserved.