



200-101^{Q&As}

Interconnecting Cisco Networking Devices Part 2 (ICND2)

Pass Cisco 200-101 Exam with 100% Guarantee

Free Download Real Questions & Answers **PDF** and **VCE** file from:

<https://www.passapply.com/200-101.html>

100% Passing Guarantee
100% Money Back Assurance

Following Questions and Answers are all new published by Cisco
Official Exam Center

-  **Instant Download** After Purchase
-  **100% Money Back** Guarantee
-  **365 Days** Free Update
-  **800,000+** Satisfied Customers



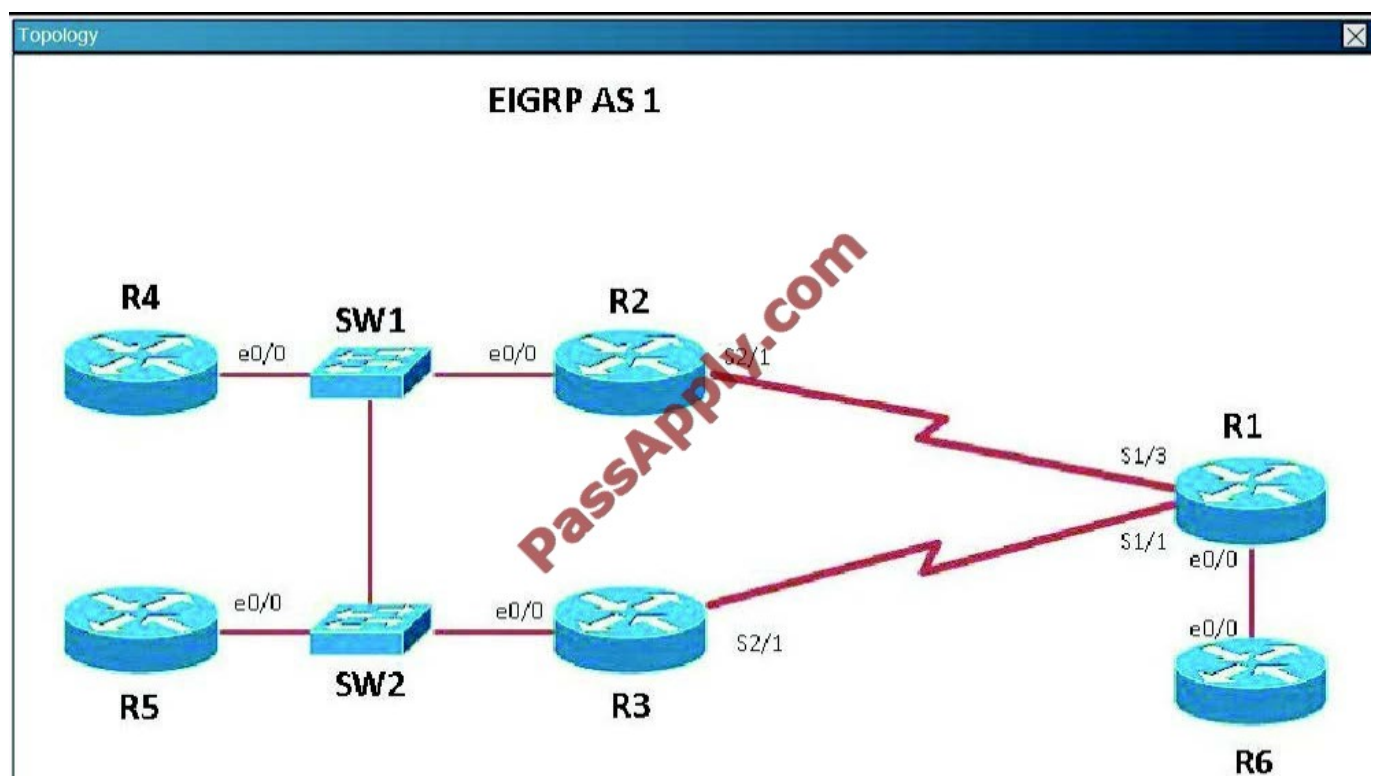
**QUESTION 1****Scenario**

Refer to the topology. Your company has connected the routers R1, R2, and R3 with serial links. R2 and R3 are connected to the switches SW1 and SW2, respectively. SW1 and SW2 are also connected to the routers R4 and R5.

The EIGRP routing protocol is configured.

You are required to troubleshoot and resolve the EIGRP issues between the various routers.

Use the appropriate show commands to troubleshoot the issues.



Study the following output taken on R1: R1# Ping 10.5.5.55 source 10.1.1.1

Type escape sequence to abort.

Sending 5.100-byte ICMP Echos to 10.5.5.55, timeout is 2 seconds:

Packet sent with a source address of 10.1.1.1

Why are the pings failing?

- A. The network statement is missing on R5.
- B. The loopback interface is shut down on R5.
- C. The network statement is missing on R1.
- D. The IP address that is configured on the Lo1 interface on R5 is incorrect.



Correct Answer: C

R5 does not have a route to the 10.1.1.1 network, which is the loopback0 IP address of R1. When looking at the EIGRP configuration on R1, we see that the 10.1.1.1 network statement is missing on R1.

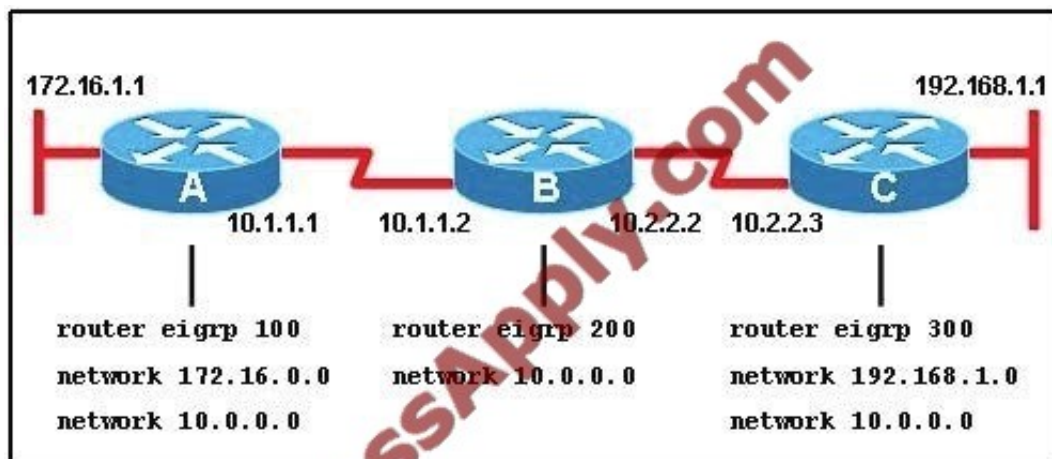
R1

```
no ip address
serial restart-delay 0
!
interface Serial2/2
no ip address
shutdown
serial restart-delay 0
!
interface Serial2/3
no ip address
shutdown
serial restart-delay 0
!
!
router eigrp 1
network 192.168.12.0
network 192.168.13.0
network 192.168.16.0
!
ip forward-protocol nd
!
!
no ip http server
no ip http secure-server
```

R1#

QUESTION 2

Refer to the exhibit.



When running EIGRP, what is required for RouterA to exchange routing updates with RouterC?

- A. AS numbers must be changed to match on all the routers
- B. Loopback interfaces must be configured so a DR is elected
- C. The no auto-summary command is needed on Router A and Router C
- D. Router B needs to have two network statements, one for each connected network

Correct Answer: A

Here we required same autonomous system between router A,B,C. Routing updates always exchange between in same EIGRP autonomous system. you can configure more than one EIGRP autonomous system on the same router. This is typically done at a redistribution point where two EIGRP autonomous systems are interconnected. Individual router interfaces should only be included within a single EIGRP autonomous system. Cisco does not recommend running multiple EIGRP autonomous systems on the same set of interfaces on the router. If multiple EIGRP autonomous systems are used with multiple points of mutual redistribution, it can cause discrepancies in the EIGRP topology table if correct filtering is not performed at the redistribution points. If possible, Cisco recommends you configure only one EIGRP autonomous system in any single autonomous system.

http://www.cisco.com/en/US/tech/tk365/technologies_tech_note09186a0080093f07.shtml

QUESTION 3

The command show frame-relay map gives the following output:

Serial 0 (up): ip 192.168.151.4 dlci 122, dynamic, broadcast, status defined, active

Which statements represent what is shown?(Choose three.)

- A. 192.168.151.4 represents the IP address of the remote router
- B. 192.168.151.4 represents the IP address of the local serial interface
- C. DLCI 122 represents the interface of the remote serial interface
- D. DLCI 122 represents the local number used to connect to the remote address



E. broadcast indicates that a dynamic routing protocol such as RIP v1 can send packets across this PVC

F. active indicates that the ARP process is working

Correct Answer: ADE

http://www.cisco.com/en/US/docs/ios/12_2/wan/command/reference/wrffr4.html#wp1029343

Field	Description
Serial 1 (administratively down)	Identifies a Frame Relay interface and its status (up or down).
ip 131.108.177.177	Destination IP address.
dldci 177 (0xB1,0x2C10)	DLCI that identifies the logical connection being used to reach this interface. This value is displayed in three ways: its decimal value (177), its hexadecimal value (0xB1), and its value as it would appear on the wire (0x2C10).
static	Indicates whether this is a static or dynamic entry.
CISCO	Indicates the encapsulation type for this map; either CISCO or IETF.
TCP/IP Header Compression (inherited), passive (inherited)	Indicates whether the TCP/IP header compression characteristics were inherited from the interface or were explicitly configured for the IP map.

QUESTION 4

Refer to the exhibit.

City#show ip interface brief					
Interface	IP-Address	OK?	Method	Status	Protocol
FastEthernet0/0	192.168.12.48	YES	manual	up	up
FastEthernet0/1	192.168.12.65	YES	manual	up	up
Serial0/0	192.168.12.121	YES	manual	up	up
Serial0/1	unassigned	YES	unset	up	up
Serial0/1.102	192.168.12.125	YES	manual	up	up
Serial0/1.103	192.168.12.129	YES	manual	up	up
Serial0/1.104	192.168.12.133	YES	manual	up	up
City#					

A network associate has configured OSPF with the command: City(config-router)# network 192.168.12.64 0.0.0.63 area 0

After completing the configuration, the associate discovers that not all the interfaces are participating in OSPF. Which three of the interfaces shown in the exhibit will participate in OSPF according to this configuration statement? (Choose three.)



- A. FastEthernet0 /0
- B. FastEthernet0 /1
- C. Serial0/0
- D. Serial0/1.102
- E. Serial0/1.103
- F. Serial0/1.104

Correct Answer: BCD

The "network 192.168.12.64 0.0.0.63 equals to network 192.168.12.64/26. This network has:

Increment: 64 (/26= 1111 1111.1111 1111.1111 1111.1100 0000) Network address: 192.168.12.64 Broadcast address: 192.168.12.127

Therefore all interface in the range of this network will join OSPF - B C D are correct.

QUESTION 5

A network administrator needs to configure a serial link between the main office and a remote location. The router at the remote office is a non-Cisco router. How should the network administrator configure the serial interface of the main office router to make the connection?

- A. Main(config)# interface serial 0/0 Main(config-if)# ip address 172.16.1.1 255.255.255.252 Main(config-if)# no shut
- B. Main(config)# interface serial 0/0 Main(config-if)# ip address 172.16.1.1 255.255.255.252 Main(config-if)# encapsulation ppp Main(config-if)# no shut
- C. Main(config)# interface serial 0/0 Main(config-if)# ip address 172.16.1.1 255.255.255.252 Main(config-if)# encapsulation frame-relay Main(config-if)# authentication chap Main(config-if)# no shut
- D. Main(config)# interface serial 0/0 Main(config-if)#ip address 172.16.1.1 255.255.255.252 Main(config-if)#encapsulation ietf Main(config-if)# no shut

Correct Answer: B

Cisco High-Level Data Link Controller (HDLC) is the Cisco proprietary protocol for sending data over synchronous serial links using HDLC. So HDLC runs only in Cisco router. PPP is not proprietary protocol it's an open source every Cisco router and non-Cisco router understand the PPP protocol. So we need to configure the PPP protocol if connection is between Cisco and non-Cisco router.

[200-101 PDF Dumps](#)

[200-101 VCE Dumps](#)

[200-101 Practice Test](#)



VCE & PDF

PassApply.com

<https://www.passapply.com/200-101.html>

2021 Latest passapply 200-101 PDF and VCE dumps Download

To Read the [Whole Q&As](#), please purchase the [Complete Version](#) from [Our website](#).

Try our product !

100% Guaranteed Success

100% Money Back Guarantee

365 Days Free Update

Instant Download After Purchase

24x7 Customer Support

Average 99.9% Success Rate

More than 800,000 Satisfied Customers Worldwide

Multi-Platform capabilities - [Windows](#), [Mac](#), [Android](#), [iPhone](#), [iPod](#), [iPad](#), [Kindle](#)

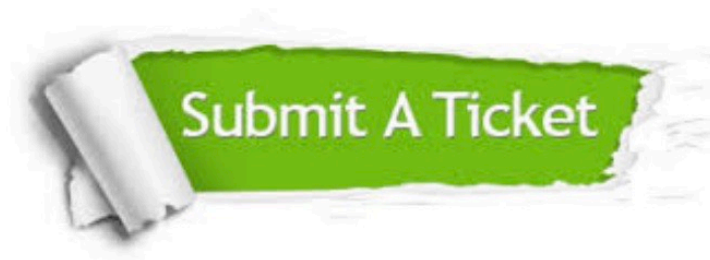
We provide exam PDF and VCE of Cisco, Microsoft, IBM, CompTIA, Oracle and other IT Certifications.
You can view Vendor list of All Certification Exams offered:

<https://www.passapply.com/allproducts>

Need Help

Please provide as much detail as possible so we can best assist you.

To update a previously submitted ticket:



 One Year Free Update Free update is available within One Year after your purchase. After One Year, you will get 50% discounts for updating. And we are proud to boast a 24/7 efficient Customer Support system via Email.	 Money Back Guarantee To ensure that you are spending on quality products, we provide 100% money back guarantee for 30 days from the date of purchase.	 Security & Privacy We respect customer privacy. We use McAfee's security service to provide you with utmost security for your personal information & peace of mind.
---	---	--

Any charges made through this site will appear as Global Simulators Limited.

All trademarks are the property of their respective owners.

Copyright © passapply, All Rights Reserved.