



1Z0-997-21^{Q&As}

Oracle Cloud Infrastructure 2021 Architect Professional

Pass Oracle 1Z0-997-21 Exam with 100% Guarantee

Free Download Real Questions & Answers **PDF** and **VCE** file from:

<https://www.passapply.com/1z0-997-21.html>

100% Passing Guarantee
100% Money Back Assurance

Following Questions and Answers are all new published by Oracle
Official Exam Center

-  **Instant Download** After Purchase
-  **100% Money Back** Guarantee
-  **365 Days** Free Update
-  **800,000+** Satisfied Customers





QUESTION 1

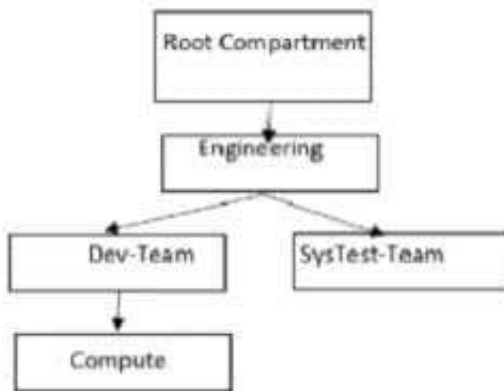
You are working as a security consultant with a global insurance organization which is using Microsoft Azure Active Directory as an identity provider to manage user login/passwords. When a user logs in to Oracle Cloud Infrastructure (OCI) console, it should get authenticated by Azure AD. Which set of steps are required to be configured in OCI to meet this requirement?

- A. Setup Azure AD as an Identity Provider, import users and groups from Azure AD to OCI, set up IAM policies to govern access to Azure AD groups.
- B. Setup Azure AD as an Enterprise Application, configure OCI for single sign-on, map Azure AD groups to OCI groups, set up the IAM policies to govern access to Azure AD groups.
- C. Setup Azure AD as an Enterprise Application, map Azure AD users, groups and policies to OCI groups and users.
- D. Setup Azure AD as an Identity Provider, map Azure AD groups to OCI groups, set up the IAM policies to govern access to Azure AD groups.

Correct Answer: D

QUESTION 2

Give this compartment structure:



You want to move a compute instance that is in `\\Compute\\` compartment to `\\SysTes-Team\\`. You login to your Oracle Cloud Infrastructure (OCI) account and use the `\\Move Resource\\` option. What will happen when you attempt moving the compute resource?

- A. The move will be successful though Compute Instance and its Public and Private IP address will stay the same. The Compute instance VNIC will need to be moved separately. The Compute instance will still be associated with the original VCN.
- B. The move will fail and you will be prompted to move the VCN first. Once VCN is moved to the target compartment, the Compute instance can be moved.
- C. The move will be successful though Compute Instance Public and Private IP address changed, and it will be associated to the VCN in target compartment.



D. The move will be successful though Compute Instance and its Public and Private IP address will stay the same. The Compute instance VNIC will still be associated with the original VCN.

Correct Answer: D

Moving Resources to a Different Compartment Most resources can be moved after they are created. There are a few resources that you can't move from one compartment to another. Some resources have attached resource dependencies and some don't. Not all attached dependencies behave the same way when the parent resource moves. For some resources, the attached dependencies move with the parent resource to the new compartment. The parent resource moves immediately, but in some cases attached dependencies move asynchronously and are not visible in the new compartment until the move is complete. For other resources, the attached resource dependencies do not move to the new compartment. You can move these attached resources independently. You can move Compute resources such as instances, instance pools, and custom images from one compartment to another. When you move a Compute resource to a new compartment, associated resources such as boot volumes and VNICs are not moved. You can move a VCN from one compartment to another. When you move a VCN, its associated VNICs, private IPs, and ephemeral IPs move with it to the new compartment.

QUESTION 3

A manufacturing company is planning to migrate their on-premises database to Oracle Cloud Infrastructure and has hired you for the migration. Customer has provided following information regarding their existing on-premises database:

Database version, database character set, storage for data staging, acceptable length of system outage.

What additional information do you need from customer in order to recommend a suitable migration method? (Choose Two)

- A. On-Premises host operating system and version.
- B. Number of active connections.
- C. Data types used in the on-premises database.
- D. Elapsed time since database was last patched.
- E. Top 5 longest running queries.

Correct Answer: AC

QUESTION 4

An E-commerce company which sells computers, tablets, and other electronics items has recently decided to move all of their on-premises infrastructure to Oracle Cloud Infrastructure (OCI). One of their on-premises application is running on an NGINX server and the Oracle Database is running in a 2 node Oracle Real Application Clusters (RAC) configuration. They cannot afford to have any application down time when they do the migration. What is an effective mechanism to migrate the customer application to OCI and set up regular automated backups?

- A. Launch a compute instance and run an NGINX server to host the application. Deploy a 2 node VM DB Systems with Oracle RAC enabled. Import the on-premises database to OCI VM DB Systems using Oracle Data Pump and then



enable automatic backups.

B. Launch a compute instance for both the NGINX application server and the database server. Attach block volumes on the database server compute instance and enable backup policy to backup the block volumes.

C. Launch a compute instance and run an NGINX server to host the application. Deploy Exadata Quarter Rack, enable automatic backups and import the database using Oracle Data Pump.

D. Launch a compute instance and run an NGINX server to host the application. Deploy a 2 node VM DB Systems with Oracle RAC enabled. Setup Oracle GoldenGate to synchronize data from their on-premises database to OCIVM Database. Export and Import the on-premises database to OCIVM DB Systems using Oracle Data Pump, apply the GoldenGate trail files to sync up the OCI database with the on-premises database. Enable automatic backups for the OCIVM database and then cutover the

application from on-premises to OCI.

Correct Answer: D

QUESTION 5

Which of the following is NOT a good use case for the volume backup feature of the Oracle Cloud Infrastructure Block Volume service?

A. Support business continuity requirements of reducing the risk of outages or data mutation over time.

B. Meet compliance and regulatory requirements for data to remain unchanged over time, so that it can be retrieved for audit purposes.

C. Rapidly duplicate an environment in seconds to test configuration changes without impacting your production environment.

D. Retain a copy of data in a volume, so that you can duplicate an environment later or preserve the data for future use.

Correct Answer: C

[Latest 1Z0-997-21 Dumps](#)

[1Z0-997-21 Study Guide](#)

[1Z0-997-21 Exam Questions](#)