



# 1Z0-441<sup>Q&As</sup>

Oracle Mobile Development 2015 Essentials

## Pass Oracle 1Z0-441 Exam with 100% Guarantee

Free Download Real Questions & Answers **PDF** and **VCE** file from:

<https://www.passapply.com/1z0-441.html>

100% Passing Guarantee  
100% Money Back Assurance

Following Questions and Answers are all new published by Oracle  
Official Exam Center

-  **Instant Download** After Purchase
-  **100% Money Back** Guarantee
-  **365 Days** Free Update
-  **800,000+** Satisfied Customers





### QUESTION 1

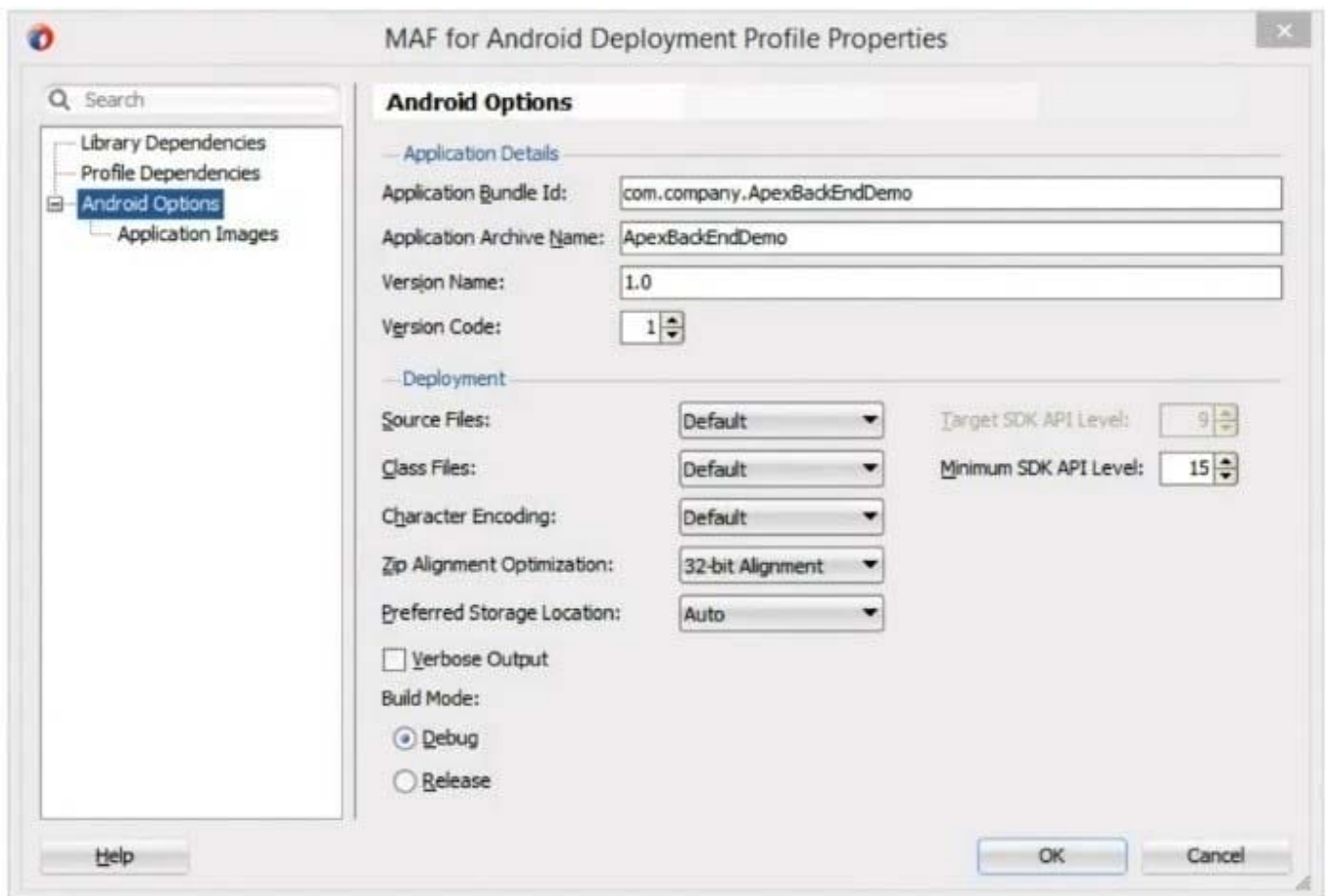
Select three common functionalities that are enabled when a MAF application is secured with Mobile Application Management (MAM) solutions such as Oracle Mobile Security Suite.

- A. Discover and download mobile applications from an enterprise app store.
- B. Encrypt the local database and files on the device.
- C. Display the user ID and password in a log file for debugging purposes.
- D. Enforce a data leak protection policy such as disabling copy-paste in the application.
- E. Hide UI fields that contain data not authorized by the logged-in user.

Correct Answer: ABD

### QUESTION 2

View the Exhibit.



The application accesses secured web services over HTTPS. The certificates have been issued by the internal certificate authority of your organization. In addition, the application requires access to the SMS and camera features of



the device.

Which are the three actions you must perform to prepare the application for distribution on the Google Play Store?

- A. In the deployment profile, specify a unique, Java language-like package name identifying the application as the ApplicationBundle ID.
- B. Obtain or generate a private key to sign the application package (.apk file) and update the preferences of your IDE to use it.
- C. Validate your archive name by using the registry available on the Oracle Technology Network.
- D. Register your application on the Oracle Mobile Cloud Service.
- E. In the deployment profile, set the build mode to Release.
- F. Remove any certificates emitted by your organization from the cacerts file.

Correct Answer: ADE

---

### QUESTION 3

Select the three parameters a developer configures in the Login Connection dialog box to leverage Oracle Access Manager (OAM) Mobile and Social.

- A. URL
- B. Service Domain
- C. Instant Name
- D. Profile ID
- E. valid users and roles

Correct Answer: BCD

---

### QUESTION 4

You and your colleague develop different parts of the same MAF application. He recently joined the company and needs to set up his workstation and devices for debugging. The application needs to be tested on Apple iPads and various Android-powered tablets. Your colleague has been assigned an Apple MacBook Pro as his workstation.

Which three tasks must you perform to ensure that your colleague will be able to debug the application on iOS and Android devices?

- A. Make sure that the network device access option is enabled in the maf- application.xml file.
- B. Obtain a debug signing certificate from the Google Play store developer support.
- C. Check that the settings in the Mobile Run configuration match those found in the cvm.properties file.
- D. Register any Apple device involved in testing and debugging under the appropriate Apple Developer account.



E. Disable USB debugging on all the Android devices involved because this will interfere the IDE's debugger.

F. Establish a Bluetooth link between your colleague's workstation and the devices.

Correct Answer: ACD

<http://docs.oracle.com/middleware/mobile201/mobile/develop/maf-debug-test.htm>

---

### QUESTION 5

In your application, you want to show a picture of a theatre with dynamic markers indicating which seats are available or unavailable. What DVT component should you use?

A. dvtm:geographicMap

B. dvtm:ledGauge

C. dvtm:lineChart

D. dvtm:nBox

E. dvtm:thematicMap

F. dvtm:treeMap

Correct Answer: E

[1Z0-441 VCE Dumps](#)

[1Z0-441 Study Guide](#)

[1Z0-441 Exam Questions](#)