



1Z0-345^{Q&As}

Oracle Policy Automation Cloud Service 2017 Implementation Essentials

Pass Oracle 1Z0-345 Exam with 100% Guarantee

Free Download Real Questions & Answers **PDF** and **VCE** file from:

<https://www.passapply.com/1z0-345.html>

100% Passing Guarantee
100% Money Back Assurance

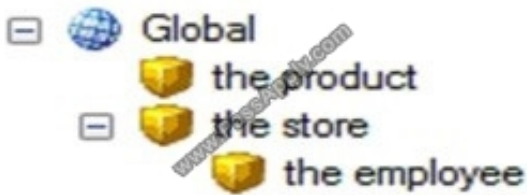
Following Questions and Answers are all new published by Oracle Official Exam Center

-  **Instant Download** After Purchase
-  **100% Money Back** Guarantee
-  **365 Days** Free Update
-  **800,000+** Satisfied Customers





QUESTION 1



Assuming that no relationship text has been manually defined or changed, what type of relationship is "all instances of the store"?

- A. a containment relationship with the employee as the target entity
- B. a containment relationship with Global as the target entity
- C. a reference relationship with the store as the target entity
- D. a containment relationship with the store as the target entity
- E. a self-referential relationship with the store as both the source and target entity
- F. a reference relationship with Global as the target entity

Correct Answer: B

QUESTION 2

You have a project containing an entity (other than the global entity) and want to create a screen to collect all instances of the entity in the interview. You create a new question screen and give it an appropriate name.

What do you do next?

- A. Click New Input and select any relationship for the entity.
- B. Click New Input and select the containment relationship for the entity.
- C. Click New Input and select an attribute of the entity.
- D. Click New Control | Entity Container and select the entity.
- E. Click New Input and select the identifying attribute of the entity.

Correct Answer: B

QUESTION 3

You are working in a policy model in which the entity "the parent" has a one-to-many relationship ("the parent's children") with the entity "the child". You need to develop a rule that proves the attribute "the parent has put all of the kids to bed", based on the attribute "the child is in bed".



Which is the correct rule?

A. the parent has put all of the kids to bed if

ForAll(the parent's children)
the child is in bed

B. the parent has put all of the kids to bed if

For(all of the parent's children), the child is in bed

C. the parent has put all of the kids to bed if

ForAll(the parent's children, the child is in bed)

D. the parent has put all of the kids to bed if

InstanceAll(the parent's children, the child is in bed)

A. Option A

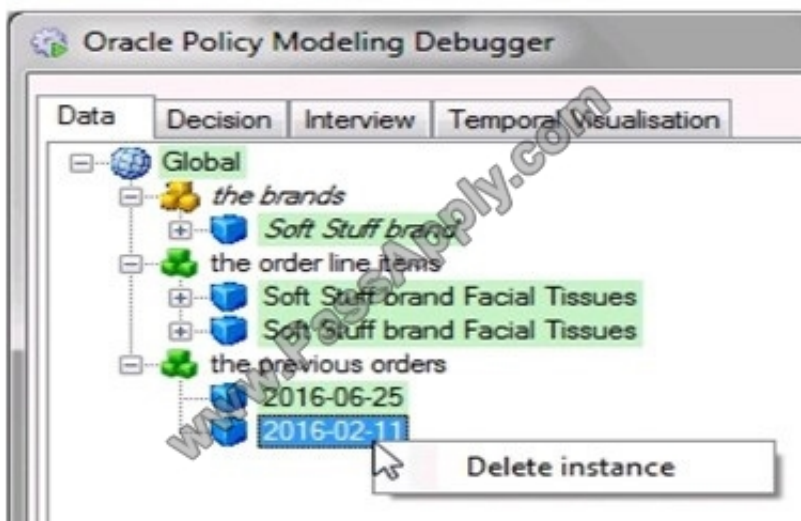
B. Option B

C. Option C

D. Option D

Correct Answer: B

QUESTION 4



You have removed an entity instance in the Debugger using the Delete instance option shown. You also want to delete the single entity instance belonging to the relationship "the brands" using the same method. Why can't you do this?

A. At least one entity instance of the relationship "the brands" must be retained.



- B. The entity instance is inferred, and can only be deleted using the Decision tab in the Debugger.
- C. The entity instance is inferred, and can only be deleted by modifying the rules or attribute values which caused it to be created.
- D. The entity instance can only be removed using the Interview tab in the Debugger.

Correct Answer: C

QUESTION 5

the employee's clock in time minutes = ExtractMinute(the employee's actual clock in time)

the employee's clock in time minutes remainder = Remainder(the employee's clock in time minutes, 15)

the adjusted employee's clock in time	
AddMinutes(the employee's actual clock in time, - the employee's clock in time minutes remainder)	the employee's clock in time minutes remainder < 9
AddMinutes(the employee's actual clock in time, (15 - the employee's clock in time minutes remainder))	otherwise

You have created a policy model which adjust employee shift start and end times, to align with an existing payroll system.

If an employee clocked in at 09:22, what will the value of the adjusted employee's clock in time be?

- A. 09:15
- B. 09:30
- C. 09:25
- D. 09:20
- E. Uncertain
- F. 09:00
- G. 10:00

Correct Answer: B



To Read the [Whole Q&As](#), please purchase the [Complete Version](#) from [Our website](#).

Try our product !

100% Guaranteed Success
100% Money Back Guarantee
365 Days Free Update
Instant Download After Purchase
24x7 Customer Support
Average 99.9% Success Rate
More than 800,000 Satisfied Customers Worldwide
Multi-Platform capabilities - [Windows](#), [Mac](#), [Android](#), [iPhone](#), [iPod](#), [iPad](#), [Kindle](#)

We provide exam PDF and VCE of Cisco, Microsoft, IBM, CompTIA, Oracle and other IT Certifications. You can view Vendor list of All Certification Exams offered:

<https://www.passapply.com/allproducts>

Need Help

Please provide as much detail as possible so we can best assist you.
To update a previously submitted ticket:



 <p>One Year Free Update Free update is available within One Year after your purchase. After One Year, you will get 50% discounts for updating. And we are proud to boast a 24/7 efficient Customer Support system via Email.</p>	 <p>Money Back Guarantee To ensure that you are spending on quality products, we provide 100% money back guarantee for 30 days from the date of purchase.</p>	 <p>Security & Privacy We respect customer privacy. We use McAfee's security service to provide you with utmost security for your personal information & peace of mind.</p>
---	---	--

Any charges made through this site will appear as Global Simulators Limited.
All trademarks are the property of their respective owners.
Copyright © passapply, All Rights Reserved.