



1Z0-071^{Q&As}

Oracle Database SQL

Pass Oracle 1Z0-071 Exam with 100% Guarantee

Free Download Real Questions & Answers **PDF** and **VCE** file from:

<https://www.passapply.com/1z0-071.html>

100% Passing Guarantee
100% Money Back Assurance

Following Questions and Answers are all new published by Oracle
Official Exam Center

-  **Instant Download** After Purchase
-  **100% Money Back** Guarantee
-  **365 Days** Free Update
-  **800,000+** Satisfied Customers





QUESTION 1

Examine this statement:

```
SELECT 1 AS id, 'John' AS first_name, NULL AS commission
FROM dual
INTERSECT
SELECT 1, 'John', null
FROM dual
ORDER BY 3;
```

What is returned upon execution?

- A. 1 row
- B. an error
- C. 0 rows
- D. 2 rows

Correct Answer: A

QUESTION 2

You create a table named 123. Which statement runs successfully?

- A. SELECT * FROM "123
- B. SELECT * FROM \ ?23\ \ ' ;
- C. SELECT * FROM , 123?;
- D. SELECT * FROM TABLE(123);

Correct Answer: A

QUESTION 3

Examine the description of the EMPLOYEES table:

Name	Null?	Type
EMPLOYEE_ID	NOT NULL	NUMBER (38)
MANAGER_ID	NOT NULL	NUMBER (38)
DEPARTMENT_ID		NUMBER (38)



Which two queries return rows for employees whose manager works in a different department? (Choose two.)

- A.

```
SELECT emp.*
  FROM employees emp
 WHERE NOT EXISTS (
   SELECT NULL
   FROM employees mgr
   WHERE emp.manager_id = mgr.employee_id
     AND emp.department_id <> mgr.department_id
 );
```
- B.

```
SELECT emp.*
  FROM employees emp
 WHERE manager_id NOT IN (
   SELECT mgr.employee_id
   FROM employees mgr
   WHERE emp.department_id <> mgr.department_id
 );
```
- C.

```
SELECT emp.*
  FROM employees emp
 JOIN employees mgr
   ON emp.manager_id = mgr.employee_id
  AND emp.department_id <> mgr.department_id
```
- D.

```
SELECT emp.*
  FROM employees emp
 LEFT JOIN employees mgr
   ON emp.manager_id = mgr.employee_id
  AND emp.department_id <> mgr.department_id
```
- E.

```
SELECT emp.*
  FROM employees emp
 RIGHT JOIN employees mgr
   ON emp.manager_id = mgr.employee_id
  AND emp.department_id <> mgr.department_id
 WHERE emp.employee_id IS NOT NULL;
```

A. Option A

B. Option B

C. Option C

D. Option D

E. Option E



Correct Answer: AC

QUESTION 4

Examine the structure proposed for the TRANSACTIONS table:

Name	Null?	Type
TRANS_ID	NOT NULL	NUMBER (6)
CUST_NAME	NOT NULL	VARCHAR2 (20)
CUST_STATUS	NOT NULL	CHAR
TRANS_DATE	NOT NULL	DATE
TRANS_VALIDITY		VARCHAR2
CUST_CREDIT_LIMIT		NUMBER

Which two statements are true regarding the creation and storage of data in the above table structure? (Choose two.)

- A. The CUST_STATUS column would store exactly one character.
- B. The TRANS_VALIDITY column would have a maximum size of one character.
- C. The CUST_CREDIT_LIMIT column would be able to store decimal values.
- D. The CUST_STATUS column would give an error.
- E. The TRANS_DATE column would be able to store day, month, century, year, hour, minutes, seconds, and fractions of seconds.
- F. The TRANS_VALIDITY column would give an error.

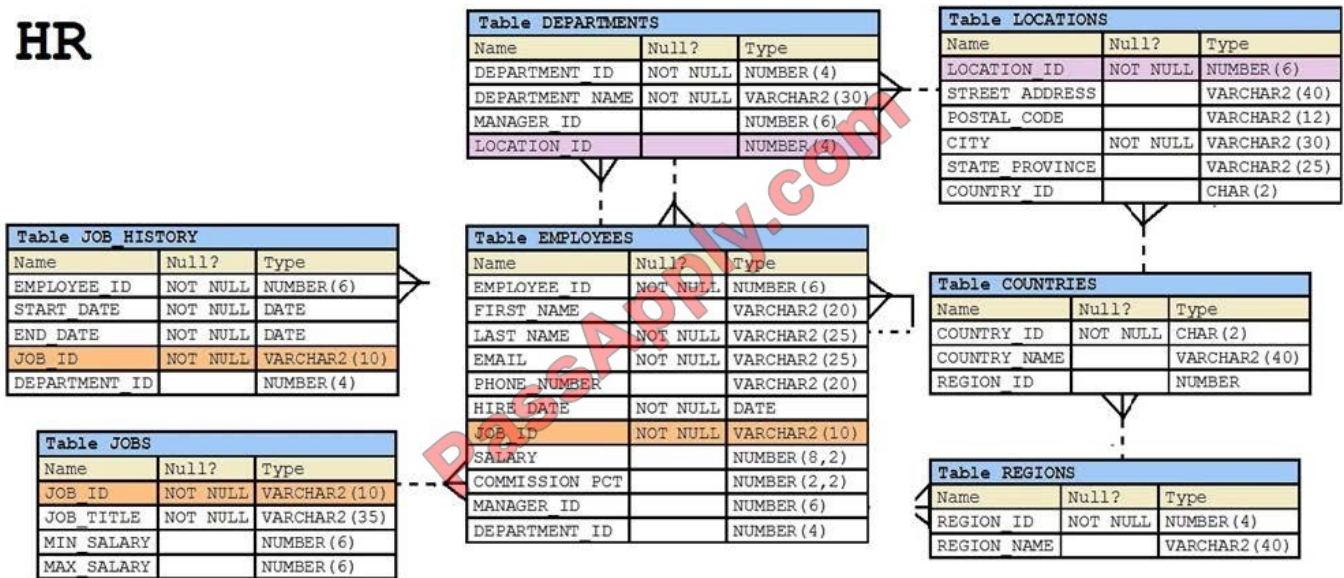
Correct Answer: AF

QUESTION 5

View the exhibit and examine the structure of the EMPLOYEES table.



HR



You want to display all employees and their managers having 100 as the MANAGER_ID. You want the output in two columns: the first column would have the LAST_NAME of the managers and the second column would have LAST_NAME of the employees.

Which SQL statement would you execute?

- A. SELECT m.last_name "Manager", e.last_name "Employee" FROM employees m JOIN employees e ON m.employee_id = e.manager_id WHERE m.manager_id = 100;
- B. SELECT m.last_name "Manager", e.last_name "Employee" FROM employees m JOIN employees e ON m.employee_id = e.manager_id WHERE e.manager_id = 100;
- C. SELECT m.last_name "Manager", e.last_name "Employee" FROM employees m JOIN employees e ON e.employee_id = m.manager_id WHERE m.manager_id = 100;
- D. SELECT m.last_name "Manager", e.last_name "Employee" FROM employees m JOIN employees e WHERE m.employee_id = e.manager_id AND e.manager_id = 100

Correct Answer: B

[Latest 1Z0-071 Dumps](#)

[1Z0-071 Exam Questions](#)

[1Z0-071 Braindumps](#)



To Read the [Whole Q&As](#), please purchase the [Complete Version](#) from [Our website](#).

Try our product !

100% Guaranteed Success
100% Money Back Guarantee
365 Days Free Update
Instant Download After Purchase
24x7 Customer Support
Average 99.9% Success Rate
More than 800,000 Satisfied Customers Worldwide
Multi-Platform capabilities - [Windows](#), [Mac](#), [Android](#), [iPhone](#), [iPod](#), [iPad](#), [Kindle](#)

We provide exam PDF and VCE of Cisco, Microsoft, IBM, CompTIA, Oracle and other IT Certifications. You can view Vendor list of All Certification Exams offered:

<https://www.passapply.com/allproducts>

Need Help

Please provide as much detail as possible so we can best assist you.
To update a previously submitted ticket:



 <p>One Year Free Update Free update is available within One Year after your purchase. After One Year, you will get 50% discounts for updating. And we are proud to boast a 24/7 efficient Customer Support system via Email.</p>	 <p>Money Back Guarantee To ensure that you are spending on quality products, we provide 100% money back guarantee for 30 days from the date of purchase.</p>	 <p>Security & Privacy We respect customer privacy. We use McAfee's security service to provide you with utmost security for your personal information & peace of mind.</p>
---	---	--

Any charges made through this site will appear as Global Simulators Limited.
All trademarks are the property of their respective owners.
Copyright © passapply, All Rights Reserved.