



# 1Y0-201<sup>Q&As</sup>

Managing Citrix XenDesktop 7.6 Solutions exam

## Pass Citrix 1Y0-201 Exam with 100% Guarantee

Free Download Real Questions & Answers **PDF** and **VCE** file from:

<https://www.passapply.com/1y0-201.html>

100% Passing Guarantee  
100% Money Back Assurance

Following Questions and Answers are all new published by Citrix  
Official Exam Center

-  **Instant Download** After Purchase
-  **100% Money Back** Guarantee
-  **365 Days** Free Update
-  **800,000+** Satisfied Customers





### QUESTION 1

How could a Citrix Administrator add a XenApp 6.5 deployment to a XenDesktop 7.6 deployment so that both are manageable from within Citrix Director?

- A. Execute the DirectorConfig.exe tool on the Citrix Director server.
- B. Install a dedicated Citrix Director server for the XenApp 6.5 environment.
- C. Add the XenApp 6.5 Data Collector to the registry on the Citrix Director server.
- D. Add the name of the XenApp 6.5 Data Collector to service.AutoDiscoveryAddress in IIS.

Correct Answer: A

---

### QUESTION 2

Scenario: A user needs two Desktop OS machines from the same group open at once. When the user attempts to launch a second Desktop OS machine, the first Desktop OS machine closes and another is launched. What could a Citrix Administrator edit to resolve this issue?

- A. Properties of the Delivery Group
- B. Web.config file on the StoreFront server
- C. Properties of the Desktop OS machine catalog
- D. Virtual Delivery Agent settings on the Desktop OS machines

Correct Answer: D

---

### QUESTION 3

#### SIMULATION

Scenario: A Citrix Administrator must use the Provisioning Services Console to add three additional server OS machines to CCH\\s environment. The administrator must add the machines to an existing machine catalog named Server 2012

and the machines should be assigned the ServerOS2012 vDisk. The administrator must name the machines AppServer04, AppServer05 and AppServer06, respectively, and the machines should be added to the Server OS Machines OU, with

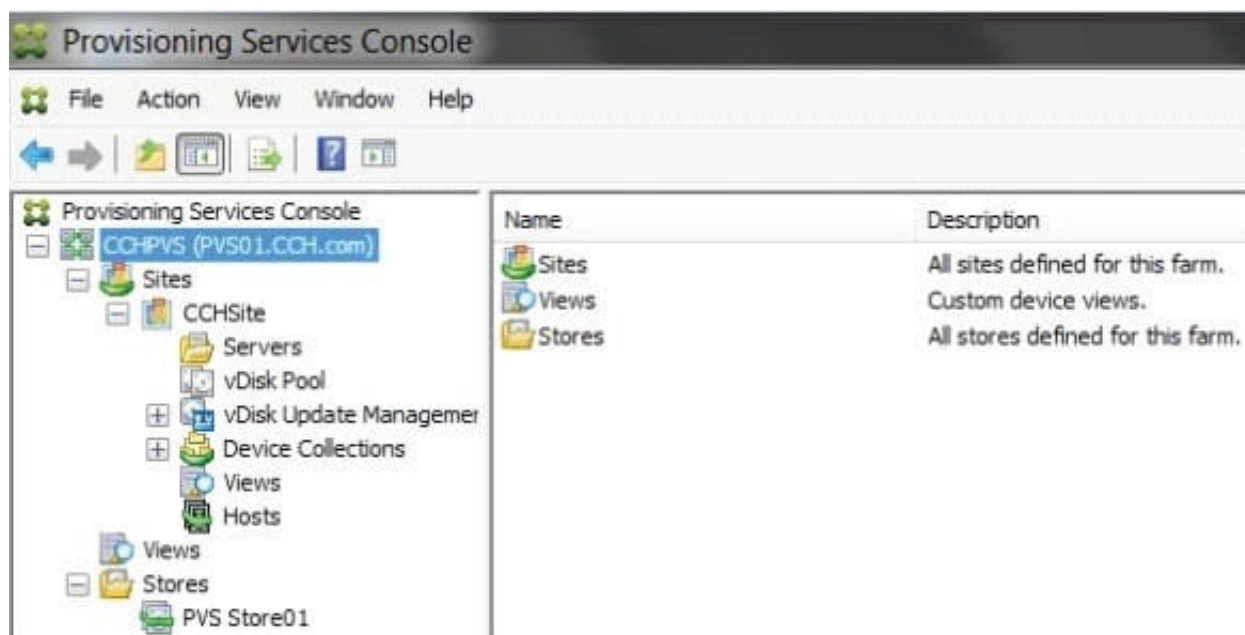
plans to add 20 more server OS machines in the future. Provisioning Services is configured to use Network0 as a streaming network interface card.

There is currently one Delivery Controller in the environment named Controller-1. This Delivery Controller is a member of the CCH.com domain.



The username for the hypervisor is root, and the password is Password 1. Tasks:

1. Create three target devices named AppServer04, AppServer05 and AppServer06, respectively.



2. Ensure the target devices are configured according to the requirements outlined in the scenario.

Correct Answer:

- 1) Right click on "CCHSite" and click on XenDesktop Setup Wizard.
- 2) From the "Welcome to XenDesktop" dialog window click on Next.
- 3) From the "XenDesktop Controller" dialog window type in Controller-1 in the "XenDesktop Controller address:" field then click on Next.
- 4) From the "XenDesktop Host Resources" dialog windows click on Next.
- 5) From the "XenDesktop Host Resources Credentials" popup window type in the password of Password1 for the username "Root" then click on OK.
- 6) From the "Template" dialog window select the Server 2012 template then click on Next.
- 7) From the "vDisk" dialog window select ServerOS2012 vdisk then click no Next.
- 8) From the "Catalog" dialog window select Create a new catalog, type in a "Catalog name:" of Server 2012 then click on Next.
- 9) From the "Operating System" select Windows Server Operating System then click on Next.
- 10) From the "Virtual machines" dialog windows increase the number of "Virtual machines to create:" 3 then click on Next.
- 11) From the "Active Directory" dialog window verify "Create new accounts" is selected then click on Next.
- 12) From the "Active Directory accounts and location" dialog window Server OS Machines OU, in the "Account naming scheme" field type in AppServer##, select 0-9 from the drop down to the right, then click on Next.



13) From the "Summary" dialog window click on Finish.

14) When the devices are finished creating click on Done.

---

#### QUESTION 4

After installing Firefox and Adobe Reader on the master target device and updating the vDisk, users report the new applications are NOT visible. What should a Citrix Administrator do to resolve this issue?

- A. Set the vDisk mode to '\\Production.\\'
- B. Merge existing vDisks with the base version.
- C. Revert the vDisk target to the previous version.
- D. Select '\\Update Machines\\' on the Machine Catalog.

Correct Answer: A

---

#### QUESTION 5

A Citrix Administrator could export Configuration Logging data from Citrix Studio in and file formats? (Choose the two correct options to complete this sentence.)

- A. .XLS
- B. .XML
- C. .PDF
- D. .CSV
- E. .HTML

Correct Answer: DE

[Latest 1Y0-201 Dumps](#)

[1Y0-201 Study Guide](#)

[1Y0-201 Braindumps](#)