



1Z0-591^{Q&As}

Oracle Business Intelligence Foundation Suite 11g Essentials

Pass Oracle 1Z0-591 Exam with 100% Guarantee

Free Download Real Questions & Answers **PDF** and **VCE** file from:

<https://www.passapply.com/1z0-591.html>

100% Passing Guarantee
100% Money Back Assurance

Following Questions and Answers are all new published by Oracle
Official Exam Center

-  **Instant Download** After Purchase
-  **100% Money Back** Guarantee
-  **365 Days** Free Update
-  **800,000+** Satisfied Customers





QUESTION 1

DSNs are set up for access to which data sources?

- A. ODBC Data Sources
- B. Oracle Data Sources
- C. IBM Data Sources
- D. Teradata Data Sources

Correct Answer: A

Explanation: The principal connection to an OBI Server inside the Oracle BI System is made through an Odbc Connection.

OBI Server can handle multiple repository but you can connect to only one at the same time by DSN Odbc Connection. Therefore, you must set up an ODBC connection for each repository.

QUESTION 2

Where is Oracle Mapviewer installed?

- A. In the same domain as OBIEE on the web application server
- B. Never on the same domain as OBIEE on the web application server
- C. On the Database server
- D. On its own application server

Correct Answer: A

Explanation: With the advent of 11G, MapViewer is installed as part of Oracle BI Enterprise Edition and deployed in the same domain as Oracle BI EE on the Web application server. Before content designers can create map views, in the Manage map Data Administration page, the metadata must be configured:

*

layers (theme) and map (zoom level)

*

the mapping between Oracle BI EE data and spatial data

QUESTION 3

Which are the three types of tables available to physical tables in the physical layer?

- A. Physical Table



B. Stored Proc

C. Select

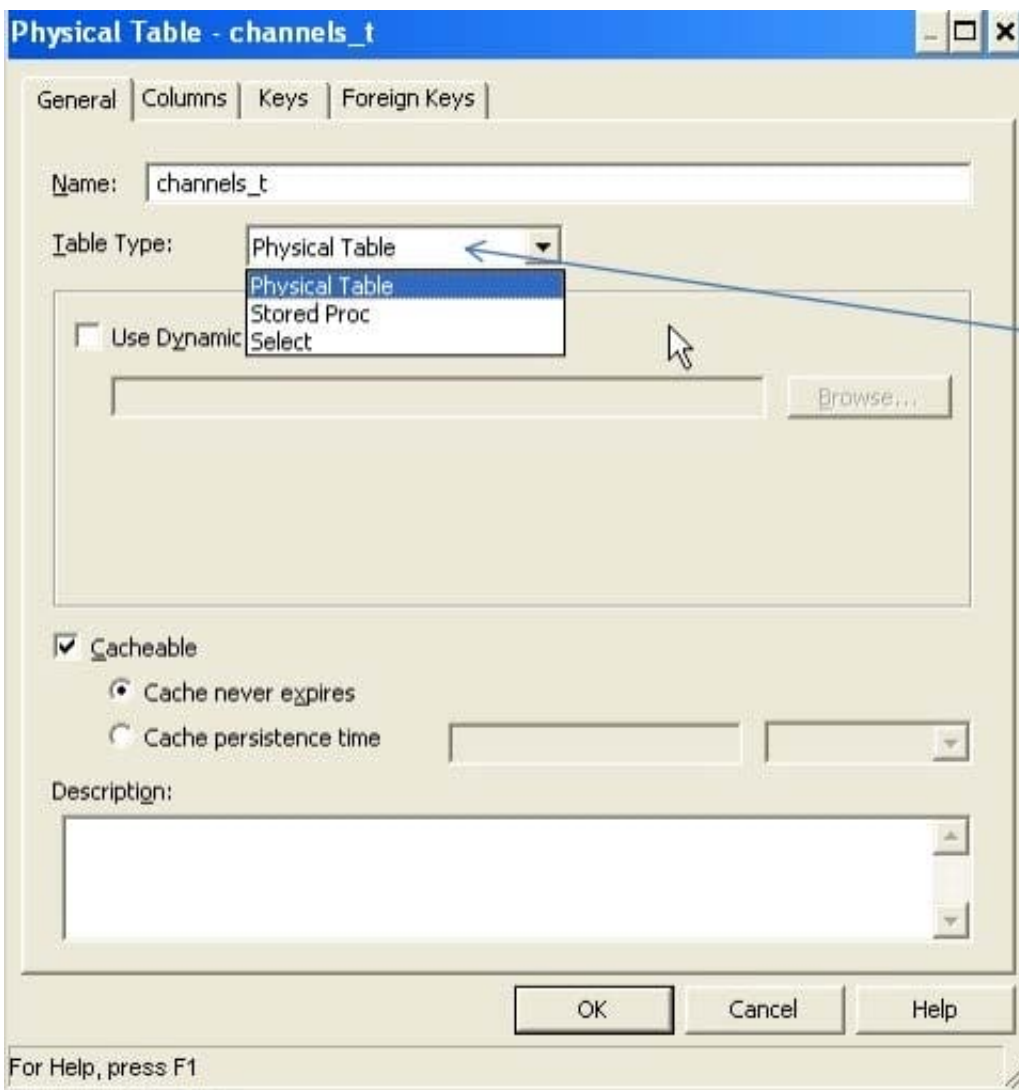
D. View

E. Table

Correct Answer: ABC

Explanation: Pull the table and column definition into the physical layer Use the OBIEE "import metadata" wizard to pull the table and column definition into the physical layer. The wizard is used so that all of the column definitions do not need to be manually added into the physical layer.

Figure:



Note: The physical layer is the layer of the Logical Business Model where you define the physical data model of your data source. It contains information about the physical data sources.

QUESTION 4



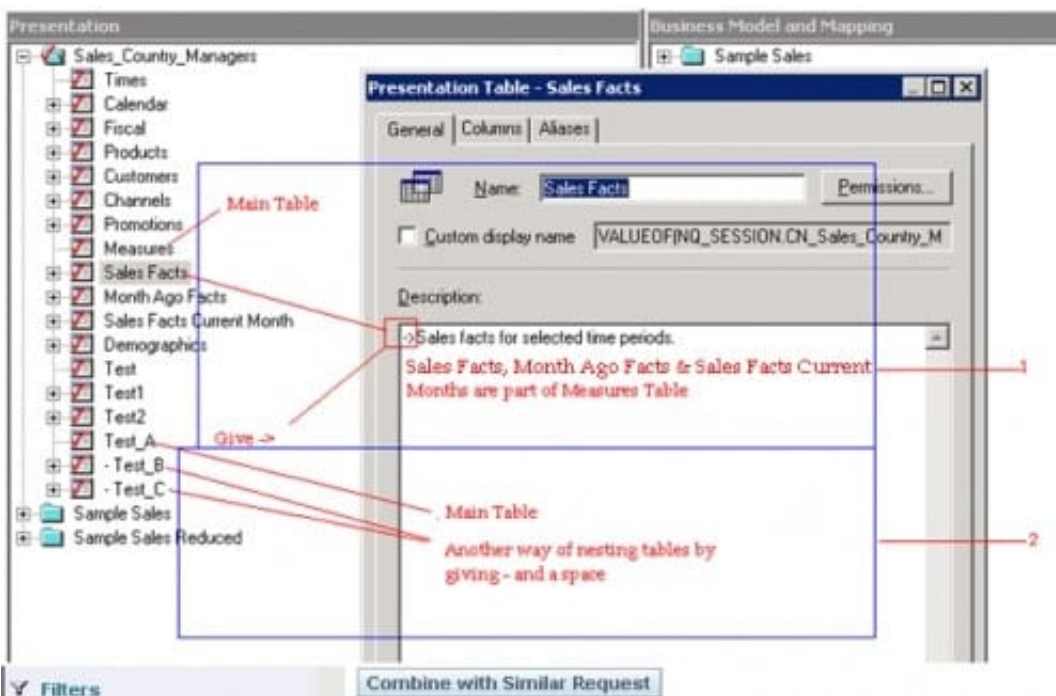
An organization would like to see a Time folder with subfolders for its Fiscal and Julian calendars. How would you accomplish this?

- A. By creating Presentation Folder called Time and then two subsequent folders called -> Fiscal Calendar and -> Julian Calendar
- B. By creating a Presentation Folder called ->Time called then two subsequent folders called Fiscal Calendar and Julian Calendar
- C. By creating a Presentation Folder called -Time and then two subsequent folders called + Fiscal Calendar and + Julian Calendar
- D. By creating a Presentation Folder called Time and then two subsequent folders called Fiscal Calendar and Julian Calendar

Correct Answer: A

Explanation: You can nest presentation folders in two ways.

- 1) You can enter a hyphen and a greater than sign in the description field of the table to achieve the result.
- 2) Or, prefix the name of the presentation folder to be nested with a hyphen and a space and place it after the folder in which it nests to achieve the same result as shown below.



Result



QUESTION 5

What are the two types of Repository Variables?

- A. System
- B. Non System
- C. Static
- D. Dynamic

Correct Answer: CD

Explanation: There are static and dynamic repository variables.

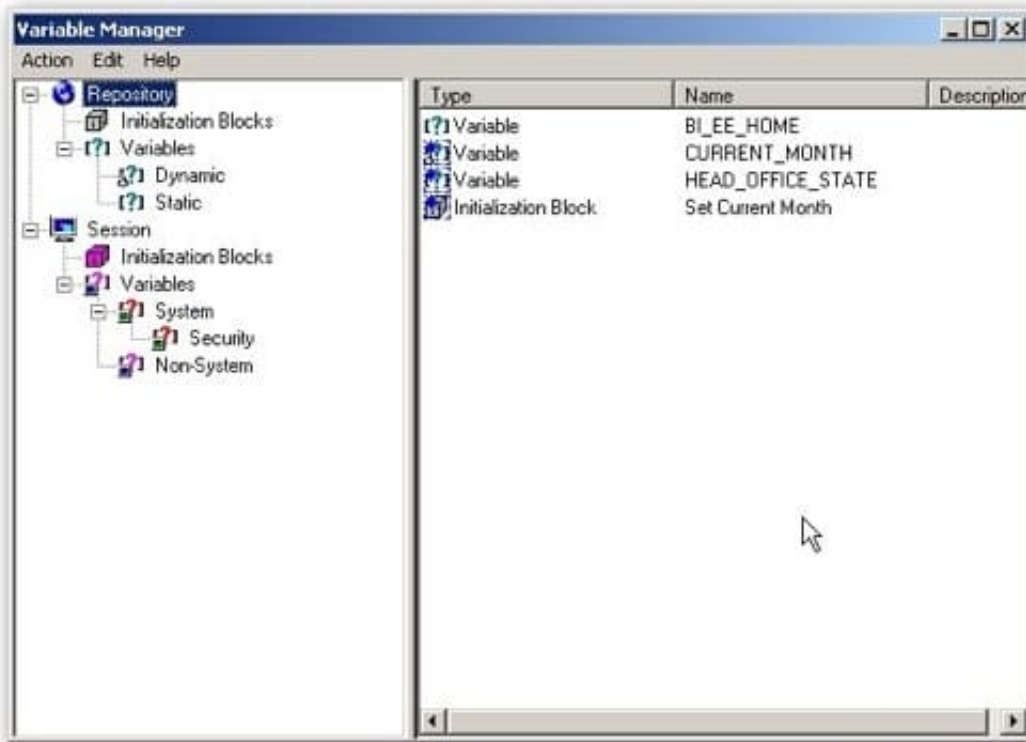
Note:

Variables in the Oracle BI Server can be either repository or session variables, and are defined using the Variable Manager within the Oracle BI Administrator (Manage > Variables).





This brings up the Variable Manager, that divides variables out into repository and session variables, with a further subdivision into static and dynamic repository ones and system and non-system session ones. You can also define variables at the Presentation Server level, these are scoped to individual dashboards and are used amongst other things for setting dashboard prompt values and integrating the dashboard with BI Publisher parameters. Here's a screenshot of a typical Variable Manager screen.



[Latest 1Z0-591 Dumps](#)

[1Z0-591 Study Guide](#)

[1Z0-591 Exam Questions](#)