



1Z0-591^{Q&As}

Oracle Business Intelligence Foundation Suite 11g Essentials

Pass Oracle 1Z0-591 Exam with 100% Guarantee

Free Download Real Questions & Answers **PDF** and **VCE** file from:

<https://www.passapply.com/1z0-591.html>

100% Passing Guarantee
100% Money Back Assurance

Following Questions and Answers are all new published by Oracle
Official Exam Center

- ⚙️ **Instant Download** After Purchase
- ⚙️ **100% Money Back** Guarantee
- ⚙️ **365 Days** Free Update
- ⚙️ **800,000+** Satisfied Customers





QUESTION 1

Which two options are valid Repository Variable names?

- A. USER
- B. CurrentDay
- C. CurrentMonth
- D. Date

Correct Answer: BC

Explanation: CurrentDay and CurrentMonth can be calculated by a sql statement.

Note:

REPOSITORY VARIABLE(DYNAMIC)

?Initialized when BI server is started

?Assigned value dynamically based on the result of a query ?Value is dependent of the sql provided in Initialization Block Create a dynamic variable and provide a Name and Default Initializer.Create a new initialization block by clicking on the

New button in the above screen.

Dynamic Repository Variable - Datawarehouse...

Name: Datawarehouse Name

Type:

☐ Static

☒ Dynamic

Initialization Block:

not assigned New...

Default Initializer:

'DW name not found'

Description

OK Cancel Help



Provide Initialization Block variable Name

QUESTION 2

One of the most common uses of Dynamic Repository Variables is to setup filters for use in reporting. Which variable below is a valid example of a Dynamic Repository Variable?

- A. Year
- B. Month
- C. Quarter
- D. CurrentMonth

Correct Answer: D

Explanation: CurrentMonth can be calculated by a sql statement.

Note:

REPOSITORY VARIABLE(DYNAMIC)

?Initialized when BI server is started

?Assigned value dynamically based on the result of a query ?Value is dependent of the sql provided in Initialization Block Create a dynamic variable and provide a Name and Default Initializer.Create a new initialization block by clicking on the

New button in the above screen.



Dynamic Repository Variable - Datawarehouse...

Name: Datawarehouse Name

Type:

☐ Static

☒ Dynamic

Initialization Block:

not assigned New...

Default Initializer:

'DW name not found'

Description

OK Cancel Help

Provide Intialization Block variable Name



Repository Variable Initialization Block - DWH Name Initialization Block

Name:

☐ Disabled

Schedule

Start on:

Refresh interval: (hours)

Data Source

Connection Pool:

Database: Oracle 11g/Exadata (Initialization string inherited from Default)

Variable Target

Name	Default Initializer
Datawarehouse Name	'DW name not found'

Execution Precedence

No execution precedence setting was made

Description

Click on "Edit Data Source" button and provide the sql to be used for the variable, e.g. select
lower(sys_context('USERENV','SESSION_USER'))|| '@' ||

lower(sys_context('USERENV','DB_NAME'))

from dual;



QUESTION 3

What are the two types of Repository Variables?

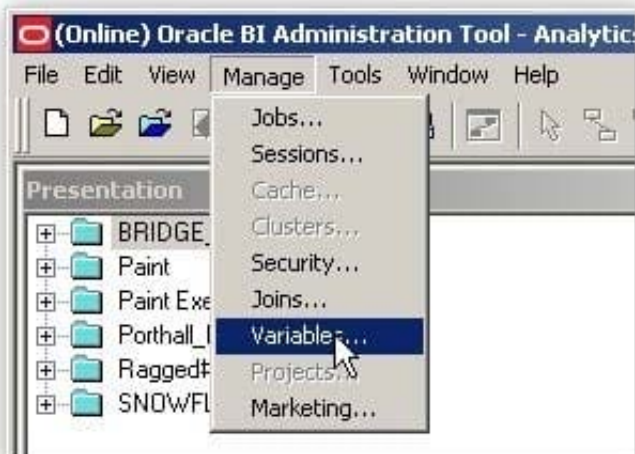
- A. System
- B. Non System
- C. Static
- D. Dynamic

Correct Answer: CD

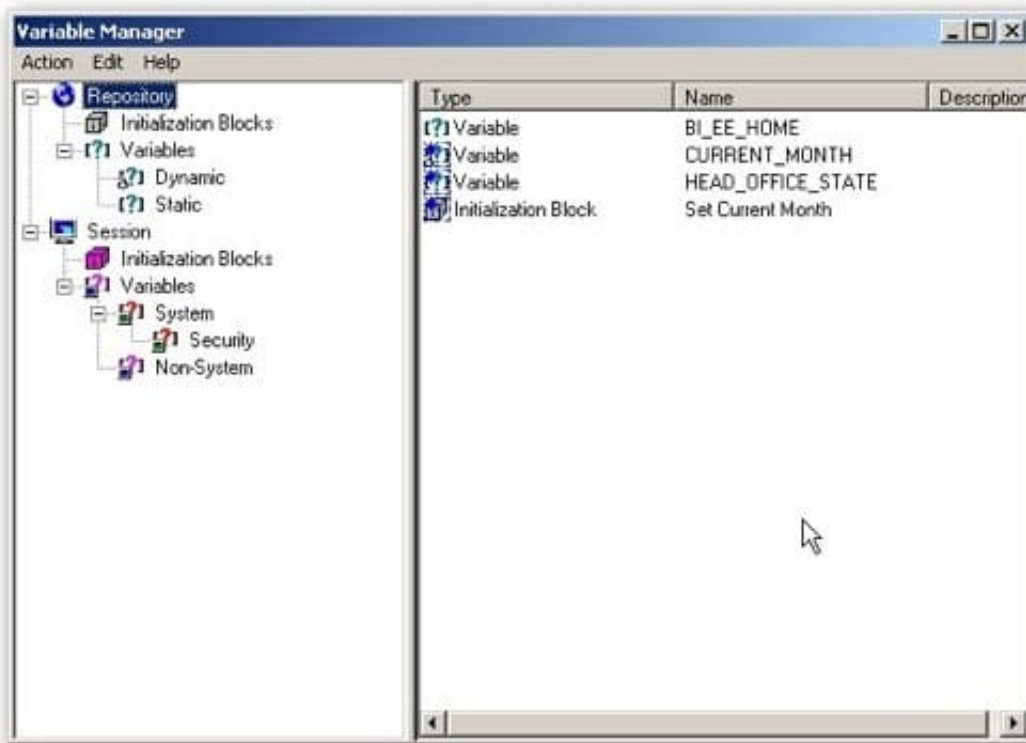
Explanation: There are static and dynamic repository variables.

Note:

Variables in the Oracle BI Server can be either repository or session variables, and are defined using the Variable Manager within the Oracle BI Administrator (Manage > Variables).



This brings up the Variable Manager, that divides variables out into repository and session variables, with a further subdivision into static and dynamic repository ones and system and non-system session ones. You can also define variables at the Presentation Server level, these are scoped to individual dashboards and are used amongst other things for setting dashboard prompt values and integrating the dashboard with BI Publisher parameters. Here's a screenshot of a typical Variable Manager screen.



QUESTION 4

An organization has its employees' names in an Employees table, and information about their jobs in a Jobs table.

However, an organization's employees can have multiple jobs, and the same job can be performed by multiple employees. This situation would result in a many to-many relationship between the Employees and Jobs tables. How can the many to-many relationship issue be resolved?

- A. By modeling the many to many relationship in the business model
- B. By creating a bridge table that represents one employee doing one job, with several rows for an employee who has several jobs
- C. By creating the many to many join in the physical model
- D. By creating a logical table source (LTS) that joins the Employees and Jobs tables

Correct Answer: B

Explanation: When you need to model many-to-many relationships between dimension tables and fact tables, you can create a bridge table that resides between the fact and the dimension tables. A bridge table stores multiple records corresponding to that dimension. In the Administration Tool, General tab in the Logical Table dialog box contains a check box that you can select to specify that a table is a bridge table. A bridge table allows you to resolve many-to-many data relationships.

Reference; OBI Server Administration Server Guide, Version 10.1, Identifying Bridge Tables



QUESTION 5

How do you get the BI plug-in for MS Office?

- A. By contacting the administrator
- B. By downloading it from the BI Server
- C. By downloading it from the Database Server
- D. By downloading it from Microsoft Server

Correct Answer: B

Explanation: Download and installation of the client

The client install executable is available for download from the More Products menu in Oracle BI Interactive Dashboards and Oracle BI Answers.

See picture below.



[1Z0-591 PDF Dumps](#)

[1Z0-591 Practice Test](#)

[1Z0-591 Exam Questions](#)