



1Z0-567^{Q&As}

Primavera P6 Enterprise Project Portfolio Management 8 Essentials

Pass Oracle 1Z0-567 Exam with 100% Guarantee

Free Download Real Questions & Answers **PDF** and **VCE** file from:

<https://www.passapply.com/1z0-567.html>

100% Passing Guarantee
100% Money Back Assurance

Following Questions and Answers are all new published by Oracle
Official Exam Center

-  **Instant Download** After Purchase
-  **100% Money Back** Guarantee
-  **365 Days** Free Update
-  **800,000+** Satisfied Customers





QUESTION 1

A portfolio scenario is defined as _____.

- A. a snapshot of project data
- B. a manual group of projects
- C. a graphical view of data
- D. a filtered group of projects

Correct Answer: A

Explanation:

A scenario is a snapshot in time of one or more projects.

QUESTION 2

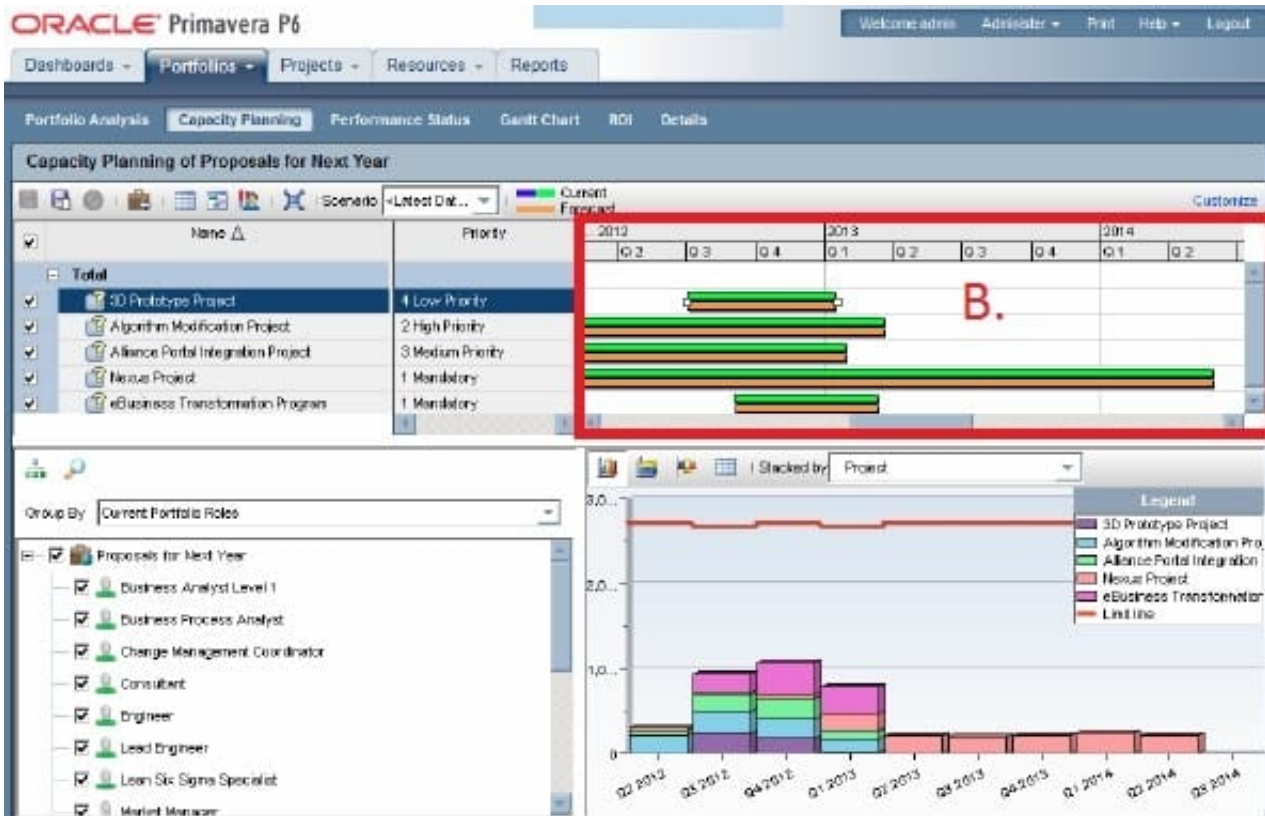
Identify the true statement regarding a Capacity Planning chart.

- A. The Capacity Planning chart displays project allocation over time.
- B. The Capacity Planning chart displays role allocation over time.
- C. The Capacity Planning chart displays resource allocation over time.
- D. The Capacity Planning chart displays unstaffed assignments over time.

Correct Answer: A

Explanation:

Example of Capacity Planning chart:



Frame B is the top-right quarter of the Capacity Planning screen. This is the Gantt area where projects are represented using scheduled dates on the green bar.

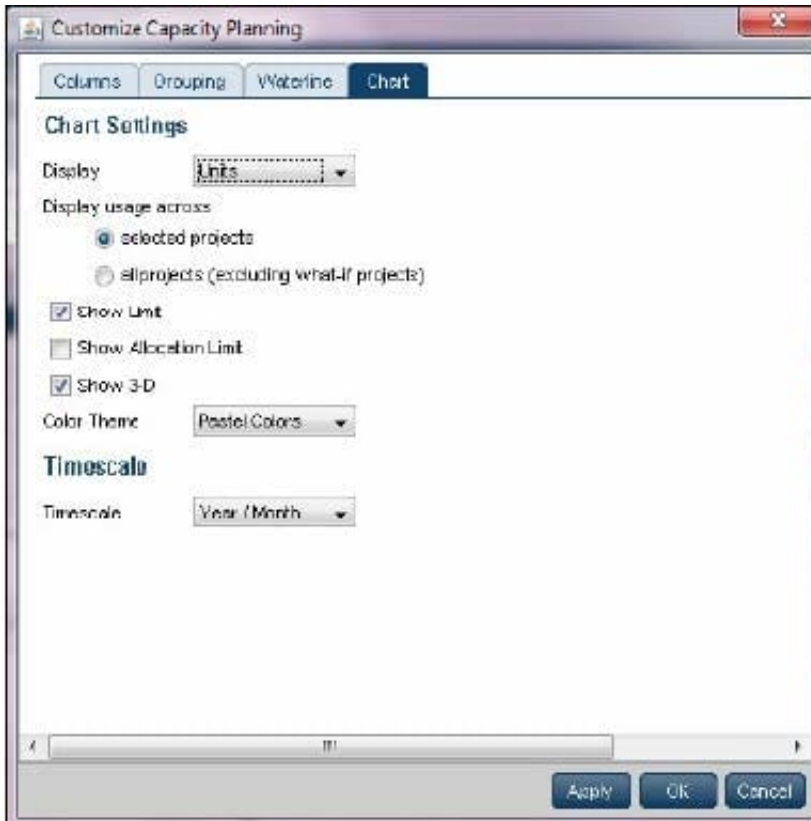
The orange bar is only seen in P6 on this screen and represents the forecast. The forecast bar will be the same as the schedule/current dates bar unless forecast

dates are specifically used (which is not typical). The purpose of the two bars is best used when viewing bids or projects in the future.

Note:

Using the Chart tab, users can change the Capacity Planning view to show Units or Costs in the Gantt chart, and can choose to display either only projects

selected or the entire portfolio. Other adjustments can be made here to create a desired view.



QUESTION 3

Identify two ways of quickly creating templates.

- A. Create a template from an existing project.
- B. Copy/paste existing project into templates node.
- C. User Project Architect to modify templates.
- D. Create complexity formulas to modify templates.
- E. Base a new template on an existing template.

Correct Answer: AE

Explanation:

You can create a template from an existing project, create it from scratch, or create it from another template.

Note: Creating a new project template

As mentioned, you can either create a template from an existing project. From the main menu, choose the Projects tab and click on the Add Project Template icon.

You get the following page:



Primavera P6 - Add Project Template - Mozilla Firefox

http://localhost:7003/p6/action/pm/createproject?type=template&ParentWbsId=3063&ParentWb

General | Advanced

Enter or select values in the required fields (*) below. Optionally choose a project or template to use as the basis for the new template, then click the Advanced tab to choose data types to copy.

Template ID *

Template Name *

Description

EPS *

Responsible Manager *

Copy from existing project or template

Use Actual Costs and Units
 Use Planned Costs and Units

* required fields

Help Create Cancel

Where, Copy from existing project or template: Allows you to create a template based on an existing project or template.

QUESTION 4

Identify the best definition of the EPS.

- A. The hierarchical definition of project budgets and actual costs.
- B. The hierarchical definition of reporting structures.
- C. The hierarchical structure of the security for projects.
- D. The hierarchical structure of the database of projects.

Correct Answer: D

Explanation:



Enterprise Project Structure (EPS)

The EPS is the outsider's view of your company, showing your lines of business. The EPS is laid out in a tree structure.

The EPS is used to organize and manage the projects in your organization. Your database of projects is arranged in a hierarchy called the enterprise project

structure (EPS).

QUESTION 5

Identify two available portfolio chart views in Primavera P6.

- A. GANTT
- B. Bubble
- C. Histogram
- D. Spreadsheet
- E. Scorecard

Correct Answer: BC

Explanation:

B: Bubble Chart is the most complex and powerful portfolio view.

C: Histograms

Note that this is not a true histogram,

which is a diagram representing a distribution of data. An example of a true histogram would be a chart showing the number of activities completed each month.

Histograms in the Portfolio Analysis view are rather a "Relative order of Magnitude" chart presented as an X-Y chart.

[Latest 1Z0-567 Dumps](#)

[1Z0-567 VCE Dumps](#)

[1Z0-567 Study Guide](#)