



# 1Z0-567<sup>Q&As</sup>

Primavera P6 Enterprise Project Portfolio Management 8 Essentials

**Pass Oracle 1Z0-567 Exam with 100% Guarantee**

Free Download Real Questions & Answers **PDF** and **VCE** file from:

<https://www.passapply.com/1z0-567.html>

100% Passing Guarantee  
100% Money Back Assurance

Following Questions and Answers are all new published by Oracle  
Official Exam Center

-  **Instant Download** After Purchase
-  **100% Money Back** Guarantee
-  **365 Days** Free Update
-  **800,000+** Satisfied Customers





**QUESTION 1**

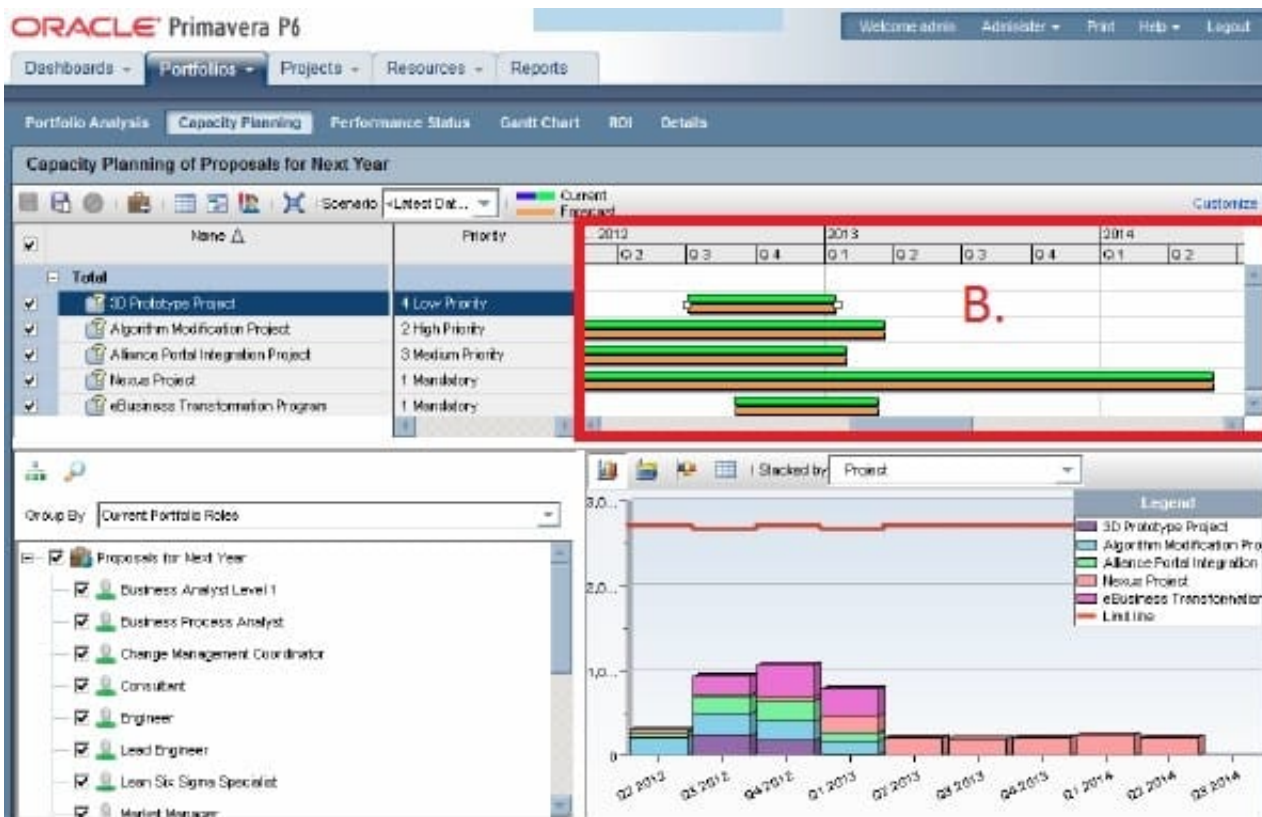
Identify the true statement regarding a Capacity Planning chart.

- A. The Capacity Planning chart displays project allocation over time.
- B. The Capacity Planning chart displays role allocation over time.
- C. The Capacity Planning chart displays resource allocation over time.
- D. The Capacity Planning chart displays unstaffed assignments over time.

Correct Answer: A

Explanation:

Example of Capacity Planning chart:



Frame B is the top-right quarter of the Capacity Planning screen. This is the Gantt area where projects are represented using scheduled dates on the green bar.

The orange bar is only seen in P6 on this screen and represents the forecast. The forecast bar will be the same as the schedule/current dates bar unless forecast

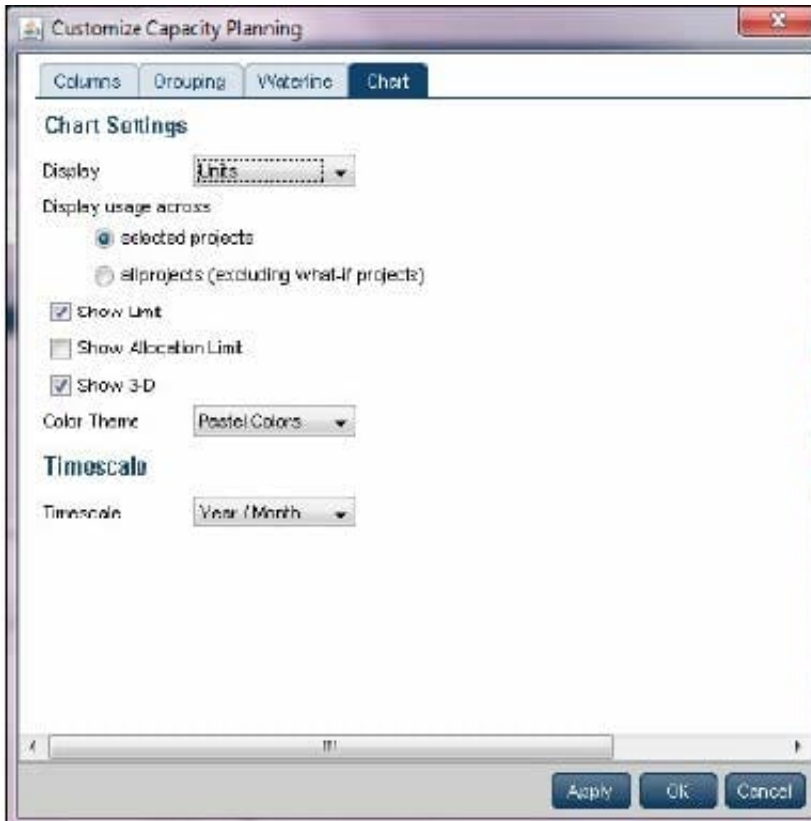
dates are specifically used (which is not typical). The purpose of the two bars is best used when viewing bids or projects in the future.

Note:



Using the Chart tab, users can change the Capacity Planning view to show Units or Costs in the Gantt chart, and can choose to display either only projects

selected or the entire portfolio. Other adjustments can be made here to create a desired view.



## QUESTION 2

You are a program manager reviewing portfolio performance data. You see that many issues are assigned to a "responsible manager." What does "responsible manager" mean with Primavera P6 EPPM?

- A. The person responsible for resolving the issue
- B. The person who identified the issue
- C. The element from the OBS associated with the issue
- D. the manager to which the issue has been assigned

Correct Answer: C

Explanation:

Your organization, from top-level personnel down through all levels. You can associate the responsible managers with their areas of the EPS-- either nodes or

individual projects. When you associate a responsible manager with an EPS node, any projects you add to that branch of the EPS are assigned that manager



element by default.

Note: Note: When you associate a responsible manager with an EPS Node, any projects you add to that branch of the EPS are assigned that manager element by

default. When you create a user, you have to give them Responsible Manager assignments in order for them to see projects. Your EPS and your OBS need to have a one-to-one relationship. If you give a user a Responsible Manager assignment (OBS) that is not tied to an EPS, Project or WBS level, they will not see any projects when they log into the Primavera Client application or the Web Application.

---

### QUESTION 3

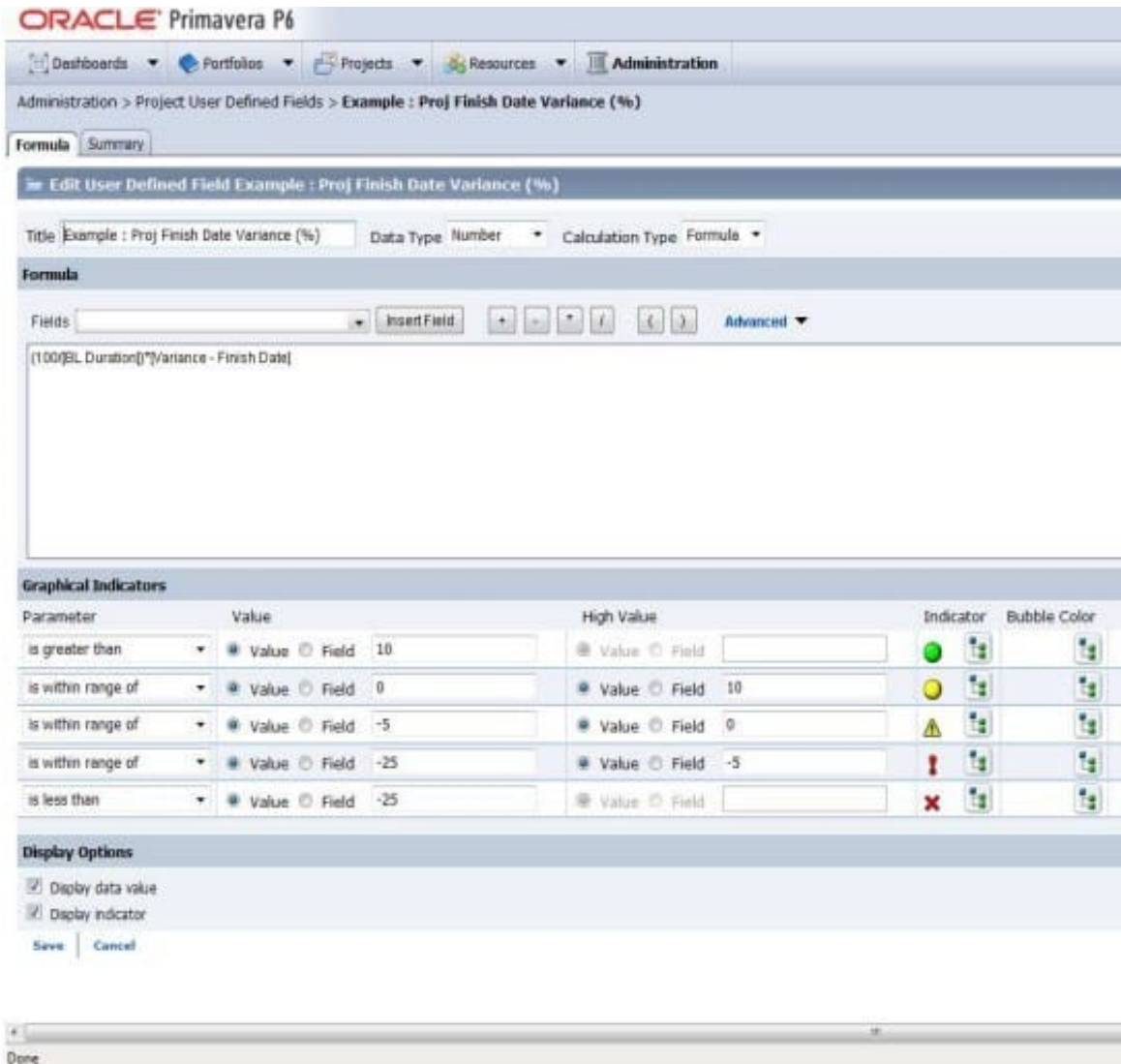
Calculated project user-defined fields \_\_\_\_\_ and \_\_\_\_\_.

- A. are created by system administrators
- B. are managed by Configuration Management
- C. are associated with formulas
- D. are viewable in either the web interface or client
- E. are defined in the web interface and only viewable in the web interface

Correct Answer: CE

Explanation:

C: The Oracle Primavera EPPM Web Access product contains a functionality where by users can create their own calculated values and dashboard indicators for monitoring project KPI's. This is achieved by creating Project Calculated User Defined Fields. The formulas which can be populated in these fields is similar to a formula used in some spreadsheet applications e.g. Microsoft Excel. Providing a simple and effective platform for creating all manner of organisation bespoke project indicators.



Note: User-defined fields enable you to customize fields and values and add them to the project database.

#### QUESTION 4

When assigning a user to a user-interface view, deselecting the Allow Editing check box restricts the user's ability to\_\_\_\_\_.

- A. edit project data in the view
- B. edit the user Interface view
- C. edit his or her password
- D. edit his or her resource profile

Correct Answer: B

Explanation: Creating User Interface Views On the Create User Interface View page, click the Users tab: Select a user from the Available Users window to assign the user to that view. Click Select to move the user to the Selected Users



column. Select the Allow Editing option to enable the user to edit the contents of their interface view. Reference; P6 EPPM Administrator's Guide, Creating User Interface Views

---

#### QUESTION 5

You are a project manager on a fixed-bid contract. This contract has actually been positioned as a "loss leader" within your company because it is your first contract with this customer. The hope is that you can prove yourself to the customer and win additional business at higher margins down the road. The margins for this contract are very slim.

What would be the best solution to set up in P6 to give you the visibility that you need to minimize the probable financial loss?

- A. Set a Mandatory Finish constraint at each contractual milestone and track schedule performance against the constraint.
- B. Set all activities in your project plan to Physical % Complete, and use Remaining Duration to track schedule performance.
- C. Set all activities in your project plan to Units % Complete, and use Remaining units to track schedule performance
- D. Set a Must finish By date at the project level, and track schedule performance using float in the project plan.

Correct Answer: B

Explanation:

Note: Percent complete

You can also update activity status by entering the completed percentage against it. In the Activity Details screen, you can set the percentage complete for the

activity to be one of these three types:

- Duration: It simply calculates the current date versus the start date and planned duration.
- Physical: It requires statusing both resource units (remaining duration or percent complete). This delivers a better representation of progress, but at the cost of requiring greater detail.
- Units: It requires statusing of remaining units. The percent of delivered units compared to planned units drives progress for the activity.

[1Z0-567 PDF Dumps](#)

[1Z0-567 Study Guide](#)

[1Z0-567 Exam Questions](#)