



1Z0-047^{Q&As}

Oracle Database SQL Expert

Pass Oracle 1Z0-047 Exam with 100% Guarantee

Free Download Real Questions & Answers **PDF** and **VCE** file from:

<https://www.passapply.com/1Z0-047.html>

100% Passing Guarantee
100% Money Back Assurance

Following Questions and Answers are all new published by Oracle
Official Exam Center

-  **Instant Download** After Purchase
-  **100% Money Back** Guarantee
-  **365 Days** Free Update
-  **800,000+** Satisfied Customers





QUESTION 1

Which two statements are true? (Choose two.)

- A. The USER_SYNONYMS view can provide information about private synonyms.
- B. The user SYSTEM owns all the base tables and user-accessible views of the data dictionary.
- C. All the dynamic performance views prefixed with V\$ are accessible to all the database users.
- D. The USER_OBJECTS view can provide information about the tables and views created by the user only.
- E. DICTIONARY is a view that contains the names of all the data dictionary views that the user can access.

Correct Answer: AD

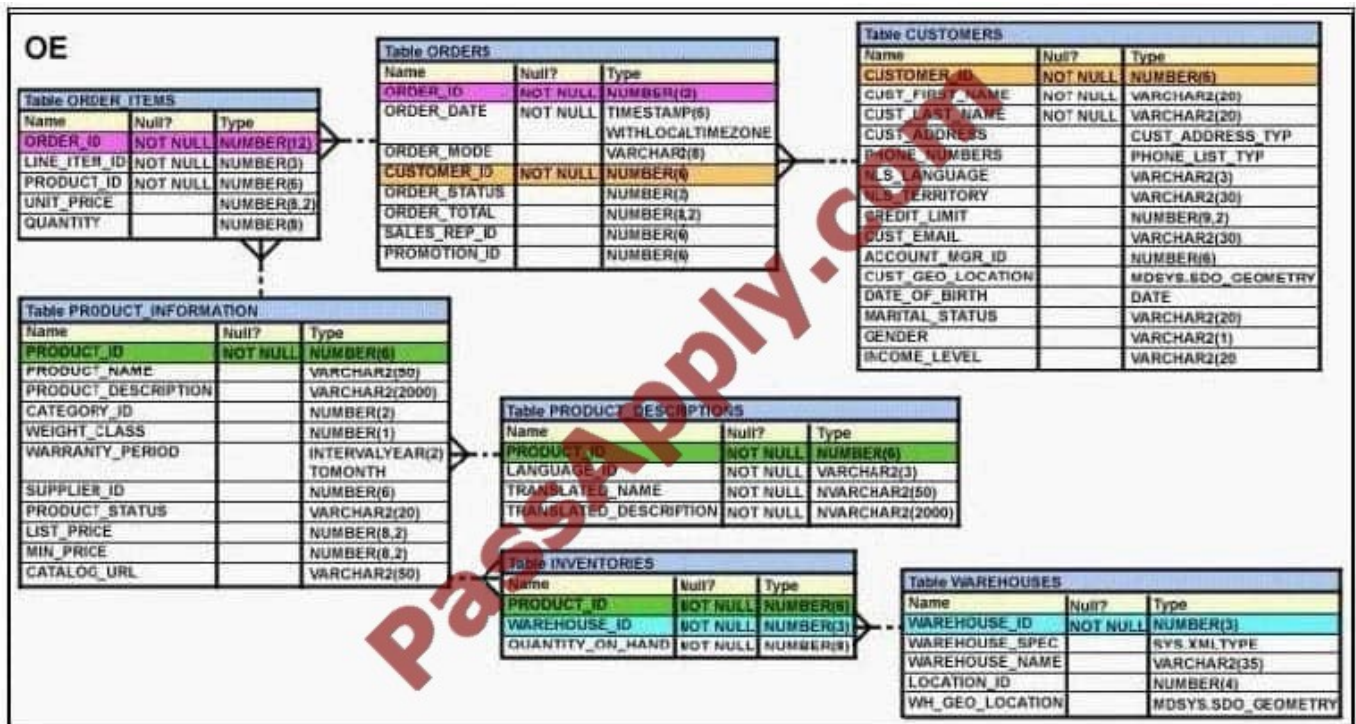
QUESTION 2

View the Exhibit and examine the structure of the PRODUCT_INFORMATION table.

You want to see the product names and the date of expiration of warranty for all the products, if the product is purchased today. The products that have no warranty should be displayed at the top and the products with maximum warranty

period should be displayed at the bottom.

Which SQL statement would you execute to fulfill this requirement?



- A. SELECT product_name, category_id, SYSDATE+warranty_period AS "Warranty expire date" FROM



product_information ORDER BY SYSDATE-warranty_period;

B. SELECT product_name, category_id, SYSDATE+warranty_period AS "Warranty expire date" FROM product_information ORDER BY SYSDATE+warranty_period;

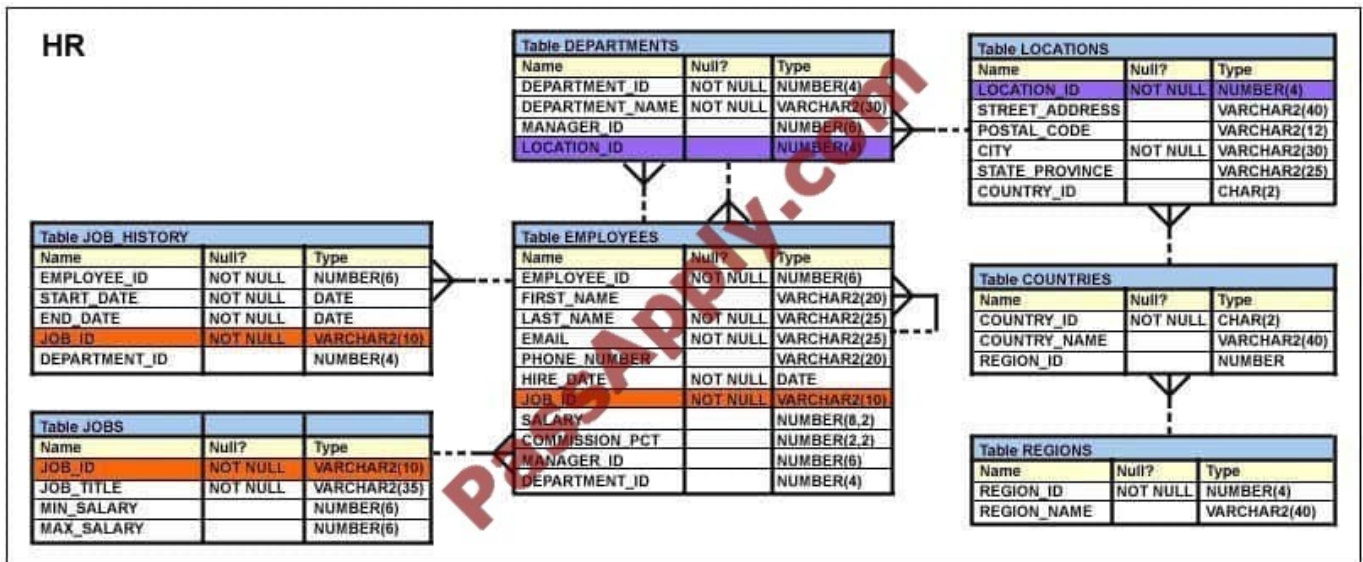
C. SELECT product_name, category_id, SYSDATE+warranty_period AS "Warranty expire date" FROM product_information ORDER BY SYSDATE;

D. SELECT product_name, category_id, SYSDATE+warranty_period "Warranty expire date" FROM product_information WHERE warranty_period >SYSDATE;

Correct Answer: B

QUESTION 3

View the Exhibit and examine the description of the EMPLOYEES table.



Your company decided to give a monthly bonus of \$50 to all the employees who have completed five years in the company. The following statement is written to display the LAST_NAME, DEPARTMENT_ID, and the total annual salary: SELECT last_name, department_id, salary*12 "Annual Compensation" FROM employees WHERE MONTHS_BETWEEN(SYSDATE, hire_date)/12 >= 5;

When you execute the statement, the "Annual Compensation" is not computed correctly. What changes would you make to the query to calculate the annual compensation correctly?

- A. Change the SELECT clause to SELECT last_name, department_id, salary*12+50 "Annual Compensation".
- B. Change the SELECT clause to SELECT last_name, department_id, salary+(50*12) "Annual Compensation".
- C. Change the SELECT clause to SELECT last_name, department_id, (salary +50)*12 "Annual Compensation".
- D. Change the SELECT clause to SELECT last_name, department_id, (salary*12)+50 "Annual Compensation".

Correct Answer: C



QUESTION 4

Which two statements are true? (Choose two.)

- A. The USER_SYNONYMS view can provide information about private synonyms.
- B. The user SYSTEM owns all the base tables and user-accessible views of the data dictionary.
- C. All the dynamic performance views prefixed with V\$ are accessible to all the database users.
- D. The USER_OBJECTS view can provide information about the tables and views created by the user only.
- E. DICTIONARY is a view that contains the names of all the data dictionary views that the user can access.

Correct Answer: AE

QUESTION 5

Which mandatory clause has to be added to the following statement to successfully create an external table called EMPDET?

```
CREATE TABLE empdet
```

```
(empno CHAR(2), ename CHAR(5), deptno NUMBER(4))
```

```
ORGANIZATION EXTERNAL
```

```
(LOCATION ('\\emp.daf'));
```

- A. TYPE
- B. REJECT LIMIT
- C. DEFAULT DIRECTORY
- D. ACCESS PARAMETERS

Correct Answer: C

[Latest 1Z0-047 Dumps](#)

[1Z0-047 Practice Test](#)

[1Z0-047 Study Guide](#)



To Read the [Whole Q&As](#), please purchase the [Complete Version](#) from [Our website](#).

Try our product !

- 100% Guaranteed Success
- 100% Money Back Guarantee
- 365 Days Free Update
- Instant Download After Purchase
- 24x7 Customer Support
- Average 99.9% Success Rate
- More than 800,000 Satisfied Customers Worldwide
- Multi-Platform capabilities - [Windows](#), [Mac](#), [Android](#), [iPhone](#), [iPod](#), [iPad](#), [Kindle](#)

We provide exam PDF and VCE of Cisco, Microsoft, IBM, CompTIA, Oracle and other IT Certifications. You can view Vendor list of All Certification Exams offered:

<https://www.passapply.com/allproducts>

Need Help

Please provide as much detail as possible so we can best assist you.
To update a previously submitted ticket:



 <p>One Year Free Update Free update is available within One Year after your purchase. After One Year, you will get 50% discounts for updating. And we are proud to boast a 24/7 efficient Customer Support system via Email.</p>	 <p>Money Back Guarantee To ensure that you are spending on quality products, we provide 100% money back guarantee for 30 days from the date of purchase.</p>	 <p>Security & Privacy We respect customer privacy. We use McAfee's security service to provide you with utmost security for your personal information & peace of mind.</p>
---	---	--

Any charges made through this site will appear as Global Simulators Limited.
All trademarks are the property of their respective owners.
Copyright © passapply, All Rights Reserved.