



1Y0-A21^{Q&As}

Basic Administration for Citrix NetScaler 9.2

Pass Citrix 1Y0-A21 Exam with 100% Guarantee

Free Download Real Questions & Answers **PDF** and **VCE** file from:

<https://www.passapply.com/1y0-a21.html>

100% Passing Guarantee
100% Money Back Assurance

Following Questions and Answers are all new published by Citrix
Official Exam Center

-  **Instant Download** After Purchase
-  **100% Money Back** Guarantee
-  **365 Days** Free Update
-  **800,000+** Satisfied Customers





QUESTION 1

When planning a deployment, in which setup scenario must an administrator configure the NetScaler system as the default router for the servers in the environment?

- A. When USNIP is configured
- B. In a single subnet configuration
- C. In a two-arm mode configuration
- D. When USIP is configured for services

Correct Answer: D

QUESTION 2

Which three components does an administrator have to configure in order to establish a basic content switching setup? (Choose three.)

- A. GSLB sites
- B. SSL Offload
- C. ADNS services
- D. Rule or URL-based policies
- E. Load balancing virtual server
- F. Content switching virtual server

Correct Answer: DEF

QUESTION 3

Scenario: An administrator needs to configure SSL offloading on a NetScaler system. The administrator has already enabled SSL on the NetScaler, added the necessary service and added an SSL-based virtual server.

Which three additional steps must the administrator take to complete the SSL offloading configuration? (Choose three.)

- A. Create load balancing virtual servers.
- B. Bind the created service to the virtual server.
- C. Add a wildcard certificate to the virtual server.
- D. Add an SSL certificate key pair to the NetScaler.
- E. Bind the SSL certificate key pair to the virtual server.

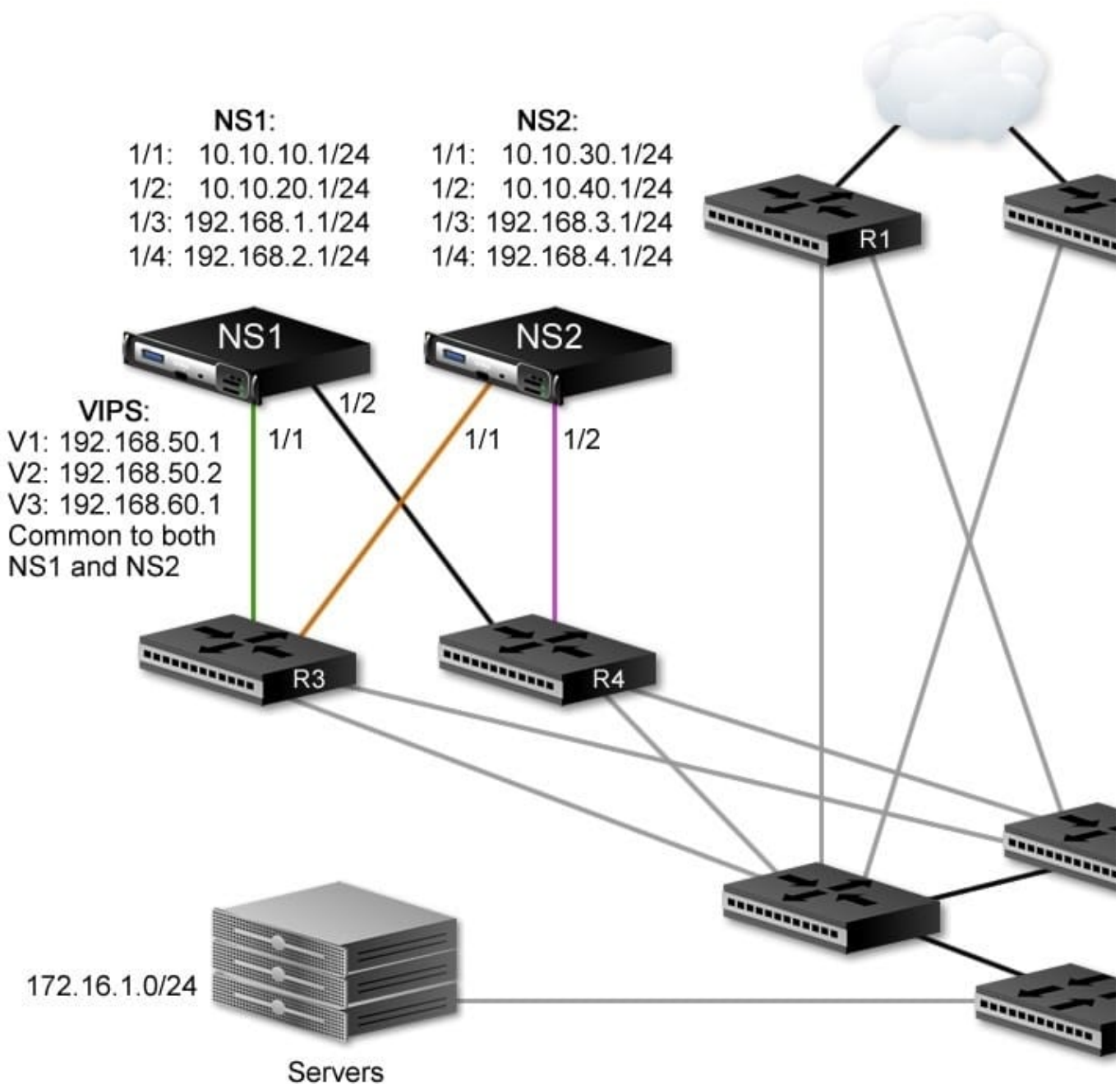


F. Obtain an SSL certificate from an authorized certificate authority (CA).

Correct Answer: BDE

QUESTION 4

Scenario: An administrator is working within a network environment as depicted in the attached exhibit. The NetScaler systems in this HA pair need to exchange heartbeat packets over L3 through routers R3 and R4.



How can the administrator achieve this HA functionality?



- A. Enable the dynamic routing feature.
- B. Configure Route Health Injection (RHI).
- C. Bind a route monitor to each NetScaler device.
- D. Enable Independent Network Configuration (INC).

Correct Answer: D

QUESTION 5

Which qualifier designates the source IP of the outgoing packet in a classic policy for NetScaler 9.2?

- A. RES.HTTP
- B. RES.SOURCEIP
- C. RES.IP.SOURCEIP
- D. RES.HTTP.HEADER
- E. RES.HTTP.SOURCEIP

Correct Answer: C

[1Y0-A21 PDF Dumps](#)

[1Y0-A21 Practice Test](#)

[1Y0-A21 Study Guide](#)